

115°40'W

115°30'W

115°20'W

115°10'W

115°00'W

46°30'N

46°30'N

46°20'N

46°20'N

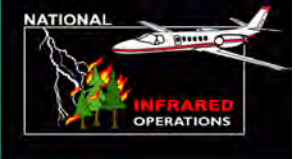
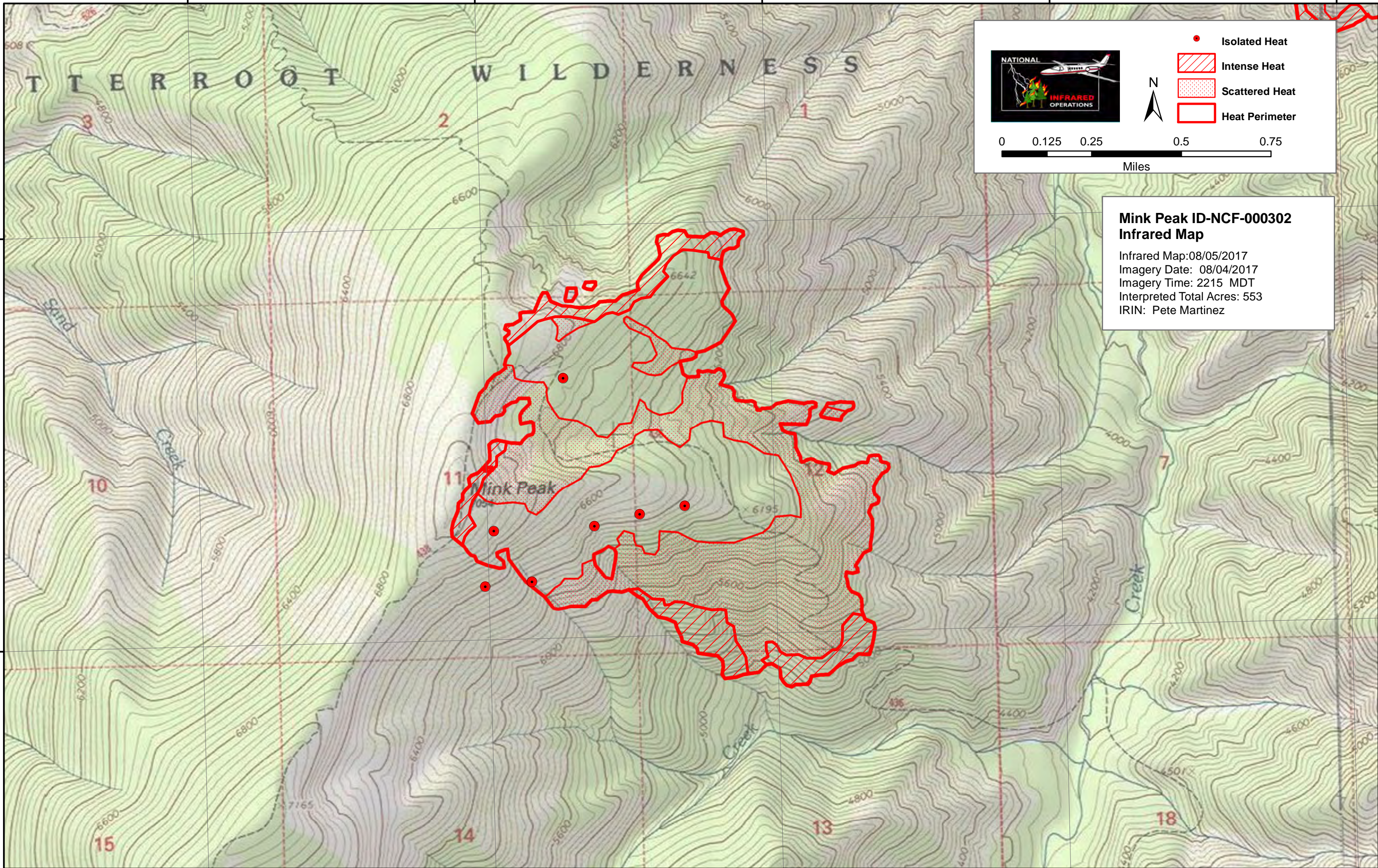
115°40'W

115°30'W

115°20'W

115°10'W

115°00'W



- Isolated Heat
- Intense Heat
- Scattered Heat
- Heat Perimeter

**Mink Peak ID-NCF-000302
Infrared Map**

Infrared Map: 08/05/2017
 Imagery Date: 08/04/2017
 Imagery Time: 2215 MDT
 Interpreted Total Acres: 553
 IRIN: Pete Martinez