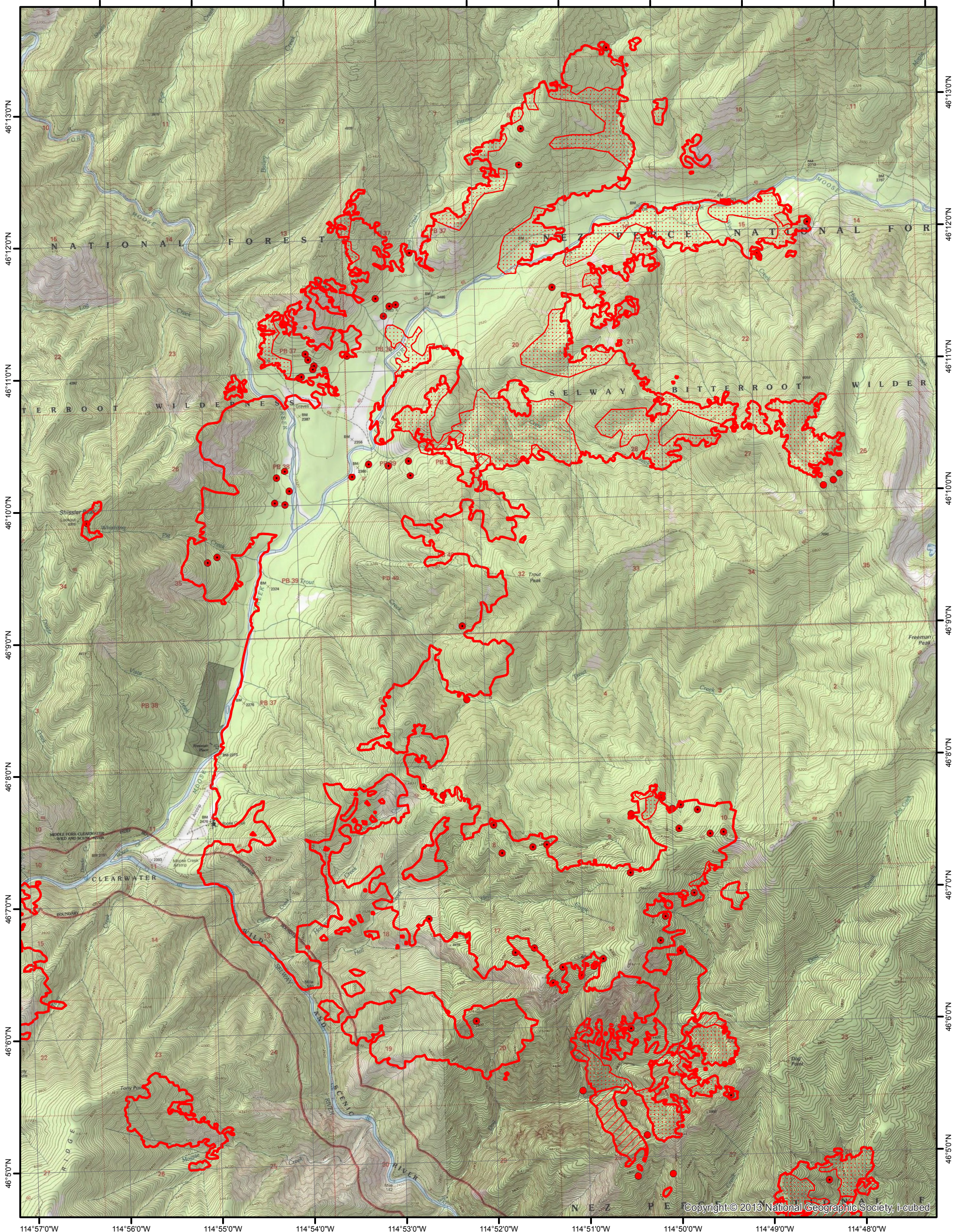


114°56'0"W 114°55'0"W 114°54'0"W 114°53'0"W 114°52'0"W 114°51'0"W 114°50'0"W 114°49'0"W 114°48'0"W 114°47'0"W



46°13'0"N
46°12'0"N
46°11'0"N
46°10'0"N
46°9'0"N
46°8'0"N
46°7'0"N
46°6'0"N
46°5'0"N





46°13'0"N
46°12'0"N
46°11'0"N
46°10'0"N
46°9'0"N
46°8'0"N
46°7'0"N
46°6'0"N
46°5'0"N

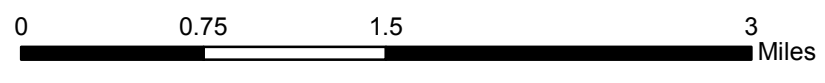
114°57'0"W 114°56'0"W 114°55'0"W 114°54'0"W 114°53'0"W 114°52'0"W 114°51'0"W 114°50'0"W 114°49'0"W 114°48'0"W

INFRARED MAP
Moose Creek 1 (ID-NCF-000306)
Flight: August 23, 2017 @ 2142 MDT
Acres - 12,817
Change in Acres from Last IR - 462
IRIN - Nate Yorgason



Legend

-  08/23/2017 2123 Moose Creek 1 IR Heat Perimeter
-  Intense Heat
-  Scattered Heat
-  Isolated Heat



Copyright © 2013 National Geographic Society, I-cubed