

114°56'0"W

114°55'30"W

114°55'0"W

114°54'30"W

Locator

46°56'0"N

46°56'0"N

46°55'30"N

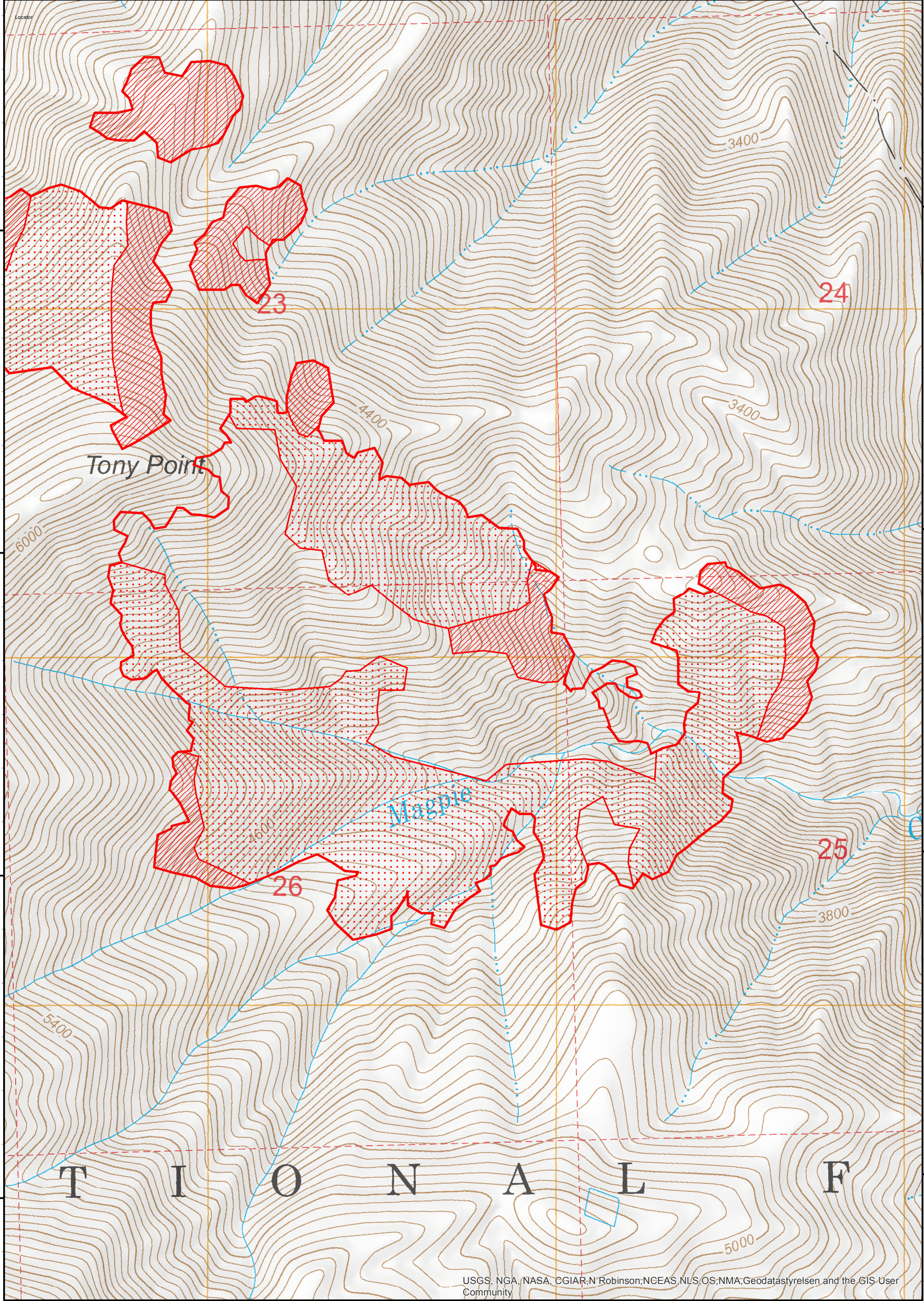
46°55'30"N

46°55'0"N

46°55'0"N

46°54'30"N

46°54'30"N



USGS, NGA, NASA, CGIAR,N Robinson,NCEAS,NLS,OS,NMA,Geodatastyrelsen and the GIS User Community

Legend

- Isolated Heat Source
- Heat Perimeter
- Intense Heat
- Scattered Heat
- No Data Area

Imagery Date: 8/27/2017 @ 0132 MDT
 Interpreted Acres: 22,255 acres (combined)
 IRIN: Maximillian Wahlberg

Moose Creek 1 Incidents
 Tony Fire - 438 Acres
 ID-NCF-000306
Infrared Map

