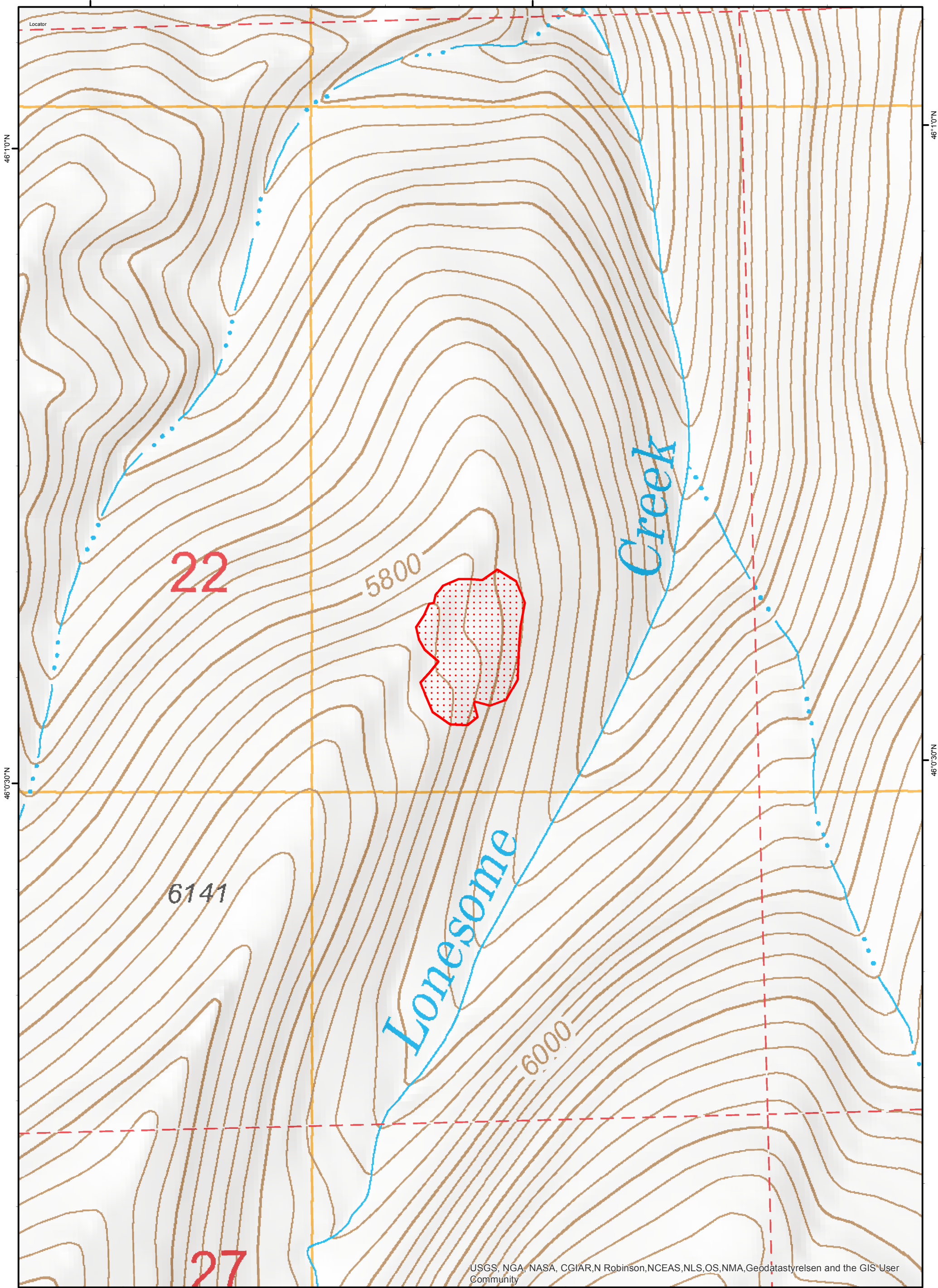


114°57'0"W

114°56'30"W



46°10'N

46°10'N

46°0'30"N

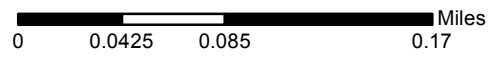
46°0'30"N

114°56'30"W

USGS, NGA, NASA, CGIAR, N Robinson, NCEAS, NLS, OS, NMA, Geodatastyrsen and the GIS User Community

**Legend**

- Isolated Heat Source
- Heat Perimeter
- Intense Heat
- Scattered Heat
- Cloud Cover



Imagery Date: 8/31/2017 @ 0134 MDT  
 Interpreted Acres: 29,021 acres (combined)  
 IRIN: Maximillian Wahlberg

**Moose Creek 1 Incidents**  
**Lonesome Fire - 6 Acres**  
**ID-NCF-000306**  
**Infrared Map**

