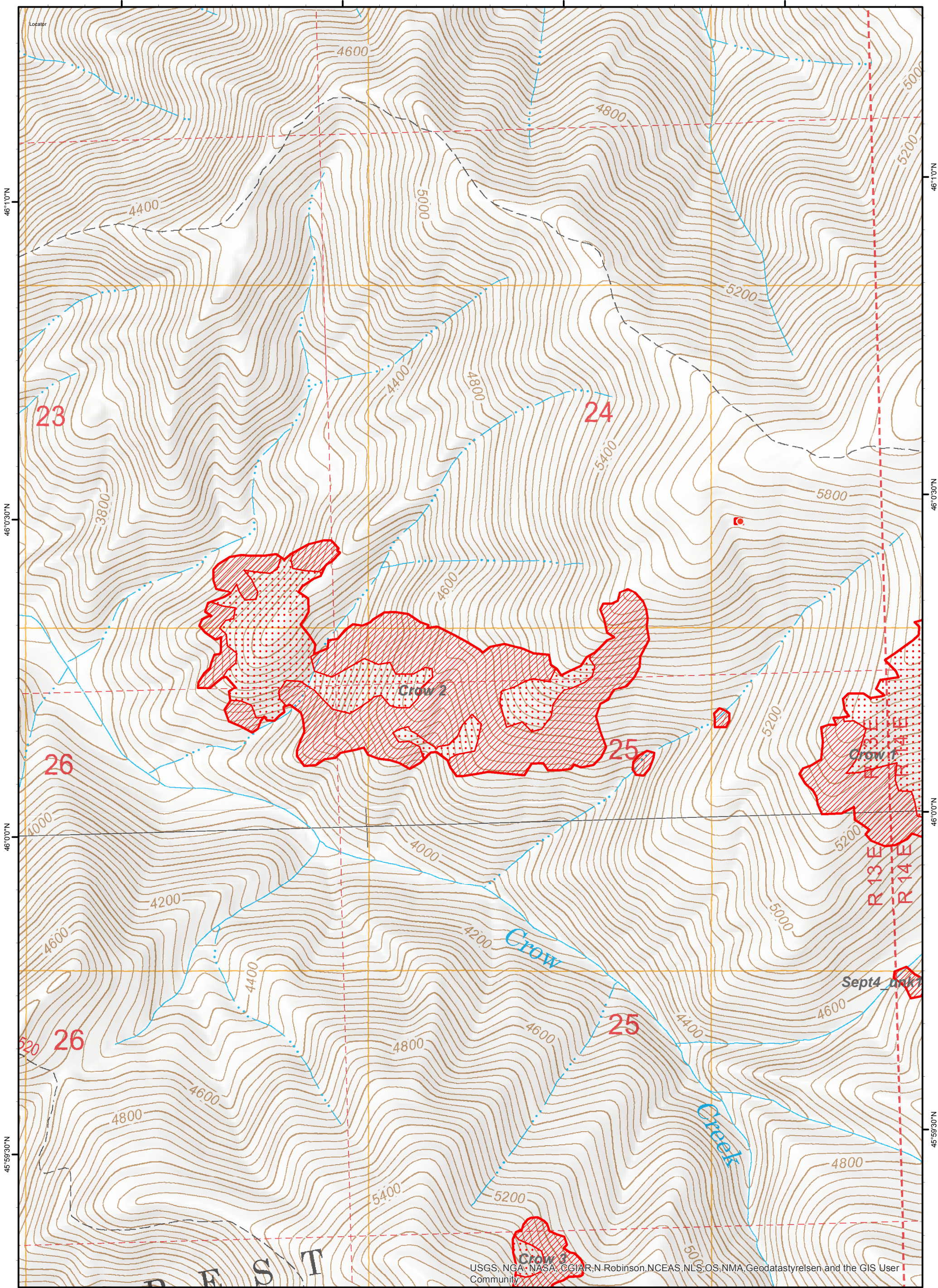


114°48'0"W

114°47'30"W

114°47'0"W

114°46'30"W



46°10'N

46°03'N

46°00'N

45°59'30"N

46°10'N

46°03'N

46°00'N

45°59'30"N

114°48'0"W 114°47'30"W 114°47'0"W 114°46'30"W

Legend

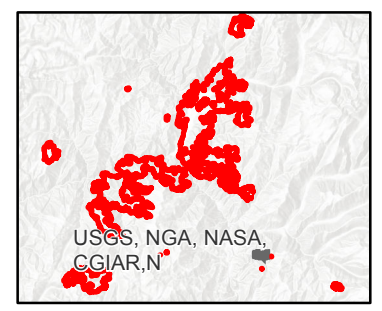
- Isolated Heat Source
- Heat Perimeter
- Intense Heat
- Scattered Heat
- No Data



0 0.075 0.15 0.3 Miles

Imagery Date: 9/4/2017 @ 0238 MDT
 Interpreted Acres: 37,672 acres (combined)
 IRIN: Maximillian Wahlberg

Moose Creek 1 Incidents
Crow 2 - 120 Acres
Infrared Map



USGS, NGA, NASA, CGIAR, N. Robinson, NCEAS, NLS, OS, NMA, Geodatastyrelsen and the GIS User Community