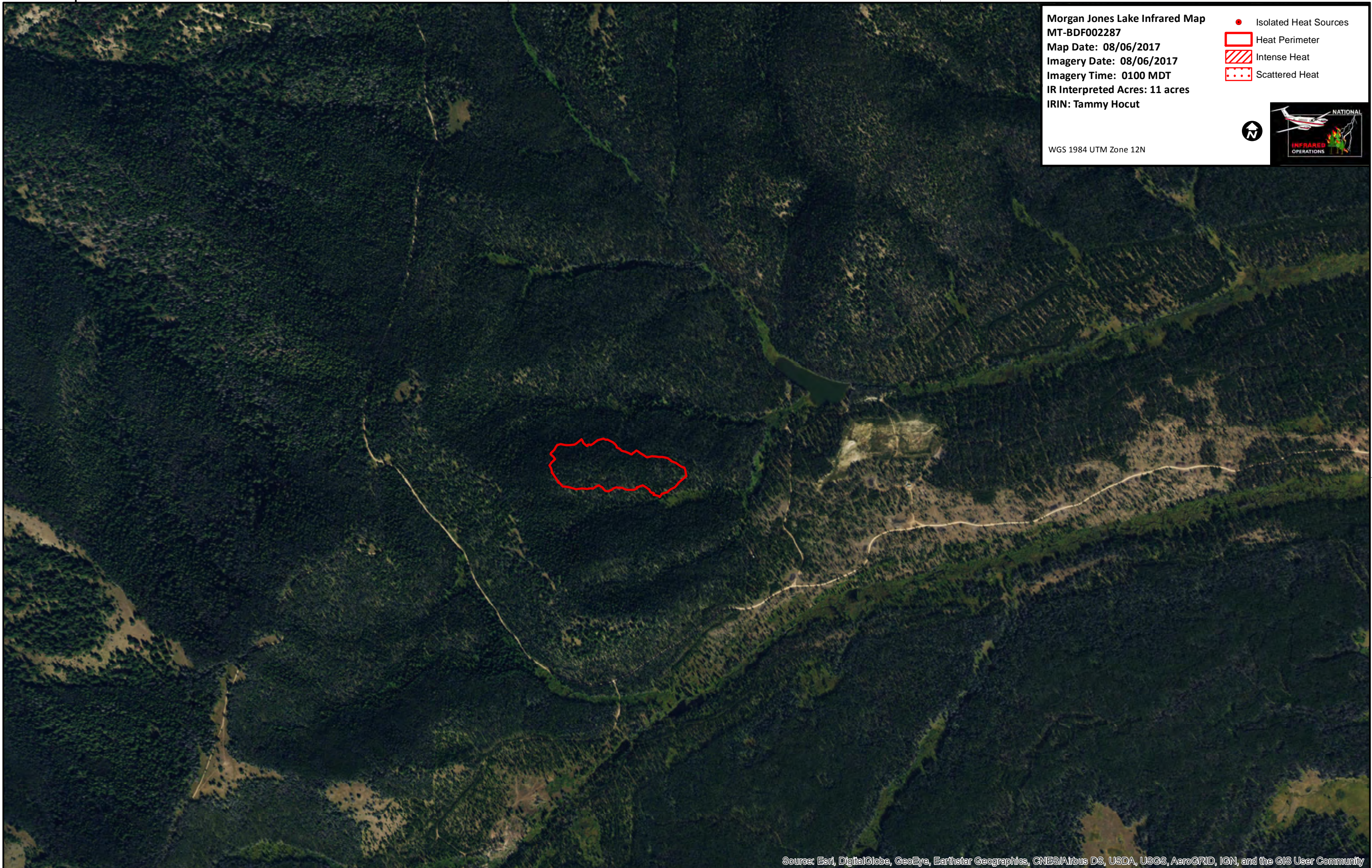


113°50'W



Morgan Jones Lake Infrared Map
MT-BDF002287
Map Date: 08/06/2017
Imagery Date: 08/06/2017
Imagery Time: 0100 MDT
IR Interpreted Acres: 11 acres
IRIN: Tammy Hocut

- Isolated Heat Sources
- Heat Perimeter
- ▨ Intense Heat
- ⋯ Scattered Heat



WGS 1984 UTM Zone 12N

Source: Esri, DigitalGlobe, GeoEye, Earthstar Geographics, CNES/Airbus DS, USDA, USGS, AeroGRID, IGN, and the GIS User Community

113°50'W