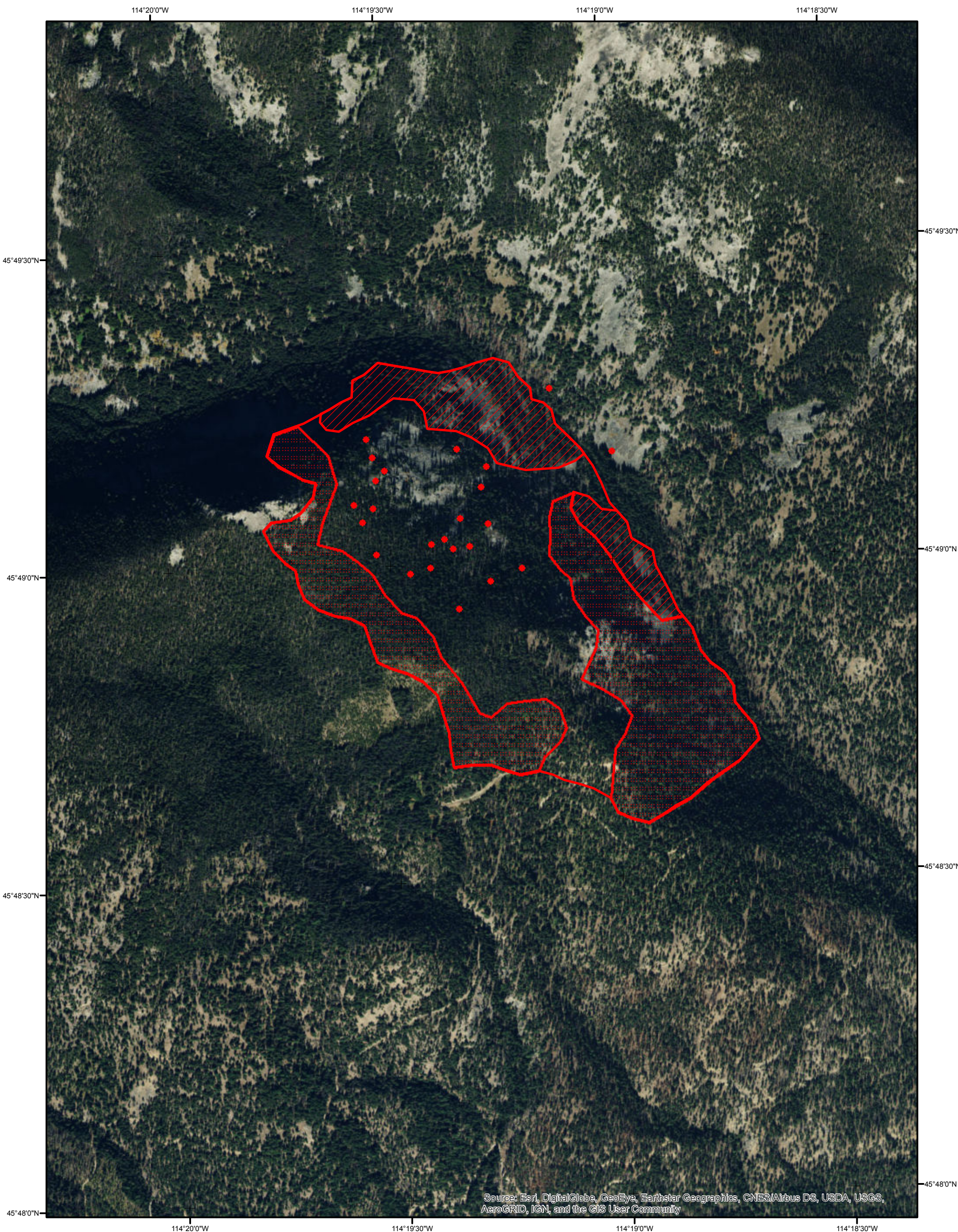
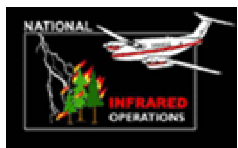


Nelson Creek  
MT-BRF-017218  
IR Map  
Flown: September 01, 0015 hrs MDT



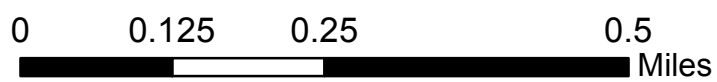
Source: Esri, DigitalGlobe, GeoEye, Earthstar Geographics, CNES/Airbus DS, USDA, USGS, AeroGRID, IGN, and the GIS User Community

Est. Size: 269 acres (heat perimeter)  
Initial Interpretation



IR Interpreter - Jeff 'Bunk' Twiss

1:10 000



**Legend**

- Heat Perimeter
- Intense Heat
- Scattered Heat
- Isolated Heat Source