





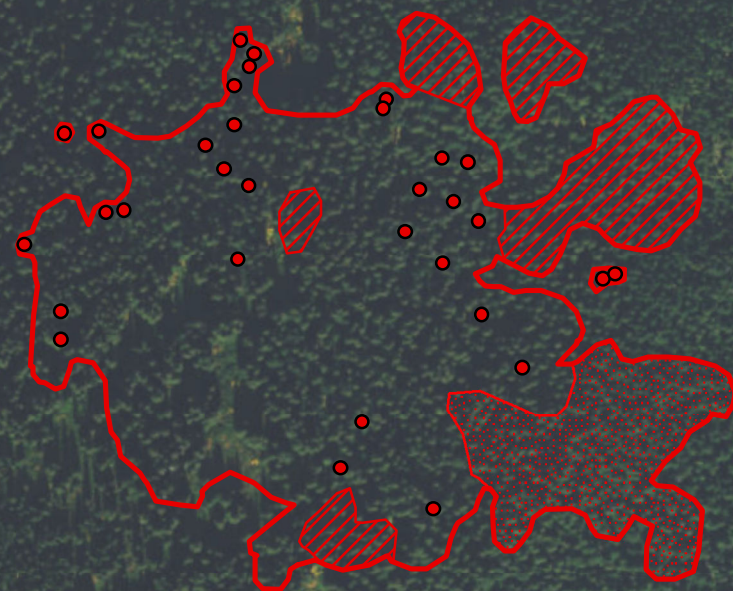
117°3'W

117°2'W

North Fork Hughes ID-IPF-000165 Infrared Heat Sources

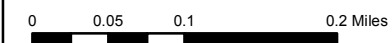
1:8,000

	Heat Perimeter
	Intense Heat Areas
	Scattered Heat Areas
	Isolated Heat Sources
NAD 1983 UTM Zone 12N	



48°54'N

48°54'N



Source: Esri, DigitalGlobe, GeoEye, Earthstar Geographics, CNES/Airbus DS, USDA, USGS, AEX, Getmapping, Aerogrid, IGN, IGP, swisstopo, and the GIS User Community

IR Interpreter: Brian Monroe
IR interpreted acres: 68
Date:07/21/2017
Time received the Image: 0425 hrs

117°3'W

117°2'W

117°1'W