





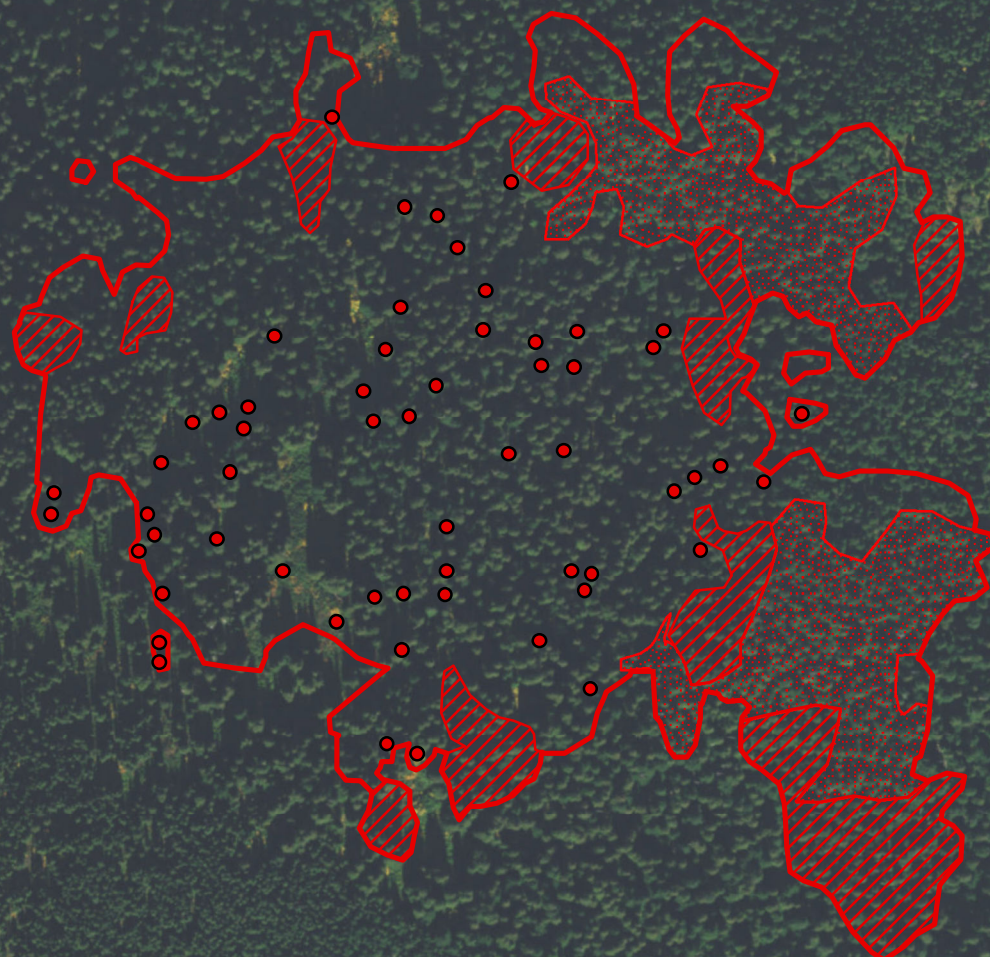
117°3'W

117°2'W

North Fork Hughes ID-IPF-000165 Infrared Heat Sources

1:6,000

	Heat Perimeter
	Intense Heat Areas
	Scattered Heat Areas
	Isolated Heat Sources
NAD 1983 UTM Zone 12N	



48°54'N

48°54'N

0 0.0425 0.085 0.17 Miles



Source: Esri, DigitalGlobe, GeoEye, Earthstar Geographics, CNES/Airbus DS, USDA, USGS, AEX, Getmapping, Aerogrid, IGN, IGP, swisstopo, and the GIS User Community

IR Interpreter: Brian Monroe
 IR interpreted acres: 80
 Date: 07/24/2017
 Time received the Image: 0141 hrs

117°2'W