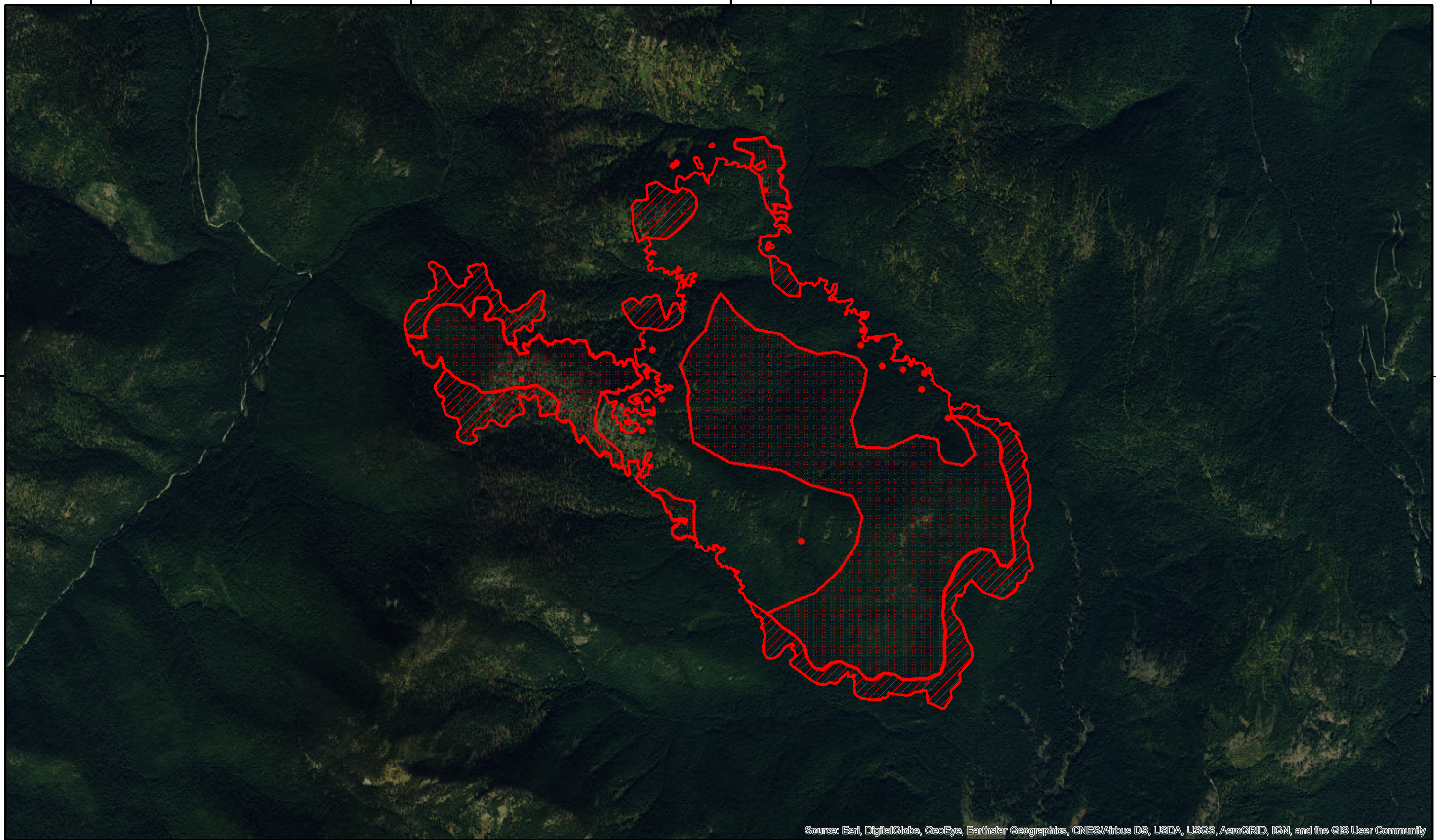


117°6'0"W 117°4'0"W 117°2'0"W 117°0'0"W 116°58'0"W

48°54'0"N

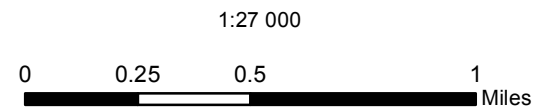
48°54'0"N



Source: Esri, DigitalGlobe, GeoEye, Earthstar Geographics, CNES/Airbus DS, USDA, USGS, AeroGRID, IGN, and the GIS User Community





117°6'0"W 117°4'0"W 117°2'0"W 117°0'0"W 116°58'0"W

Est. Size: 2,195 acres (heat perimeter)
increase of 205 acres from previous perimeter (8/30)



North Fork Hughes
ID-IPF-000165
IR Map
Flown: August 31, 1958 hrs PDT

Legend

-  Heat Perimeter
-  Intense Heat
-  Scattered Heat
-  Isolated Heat Sources