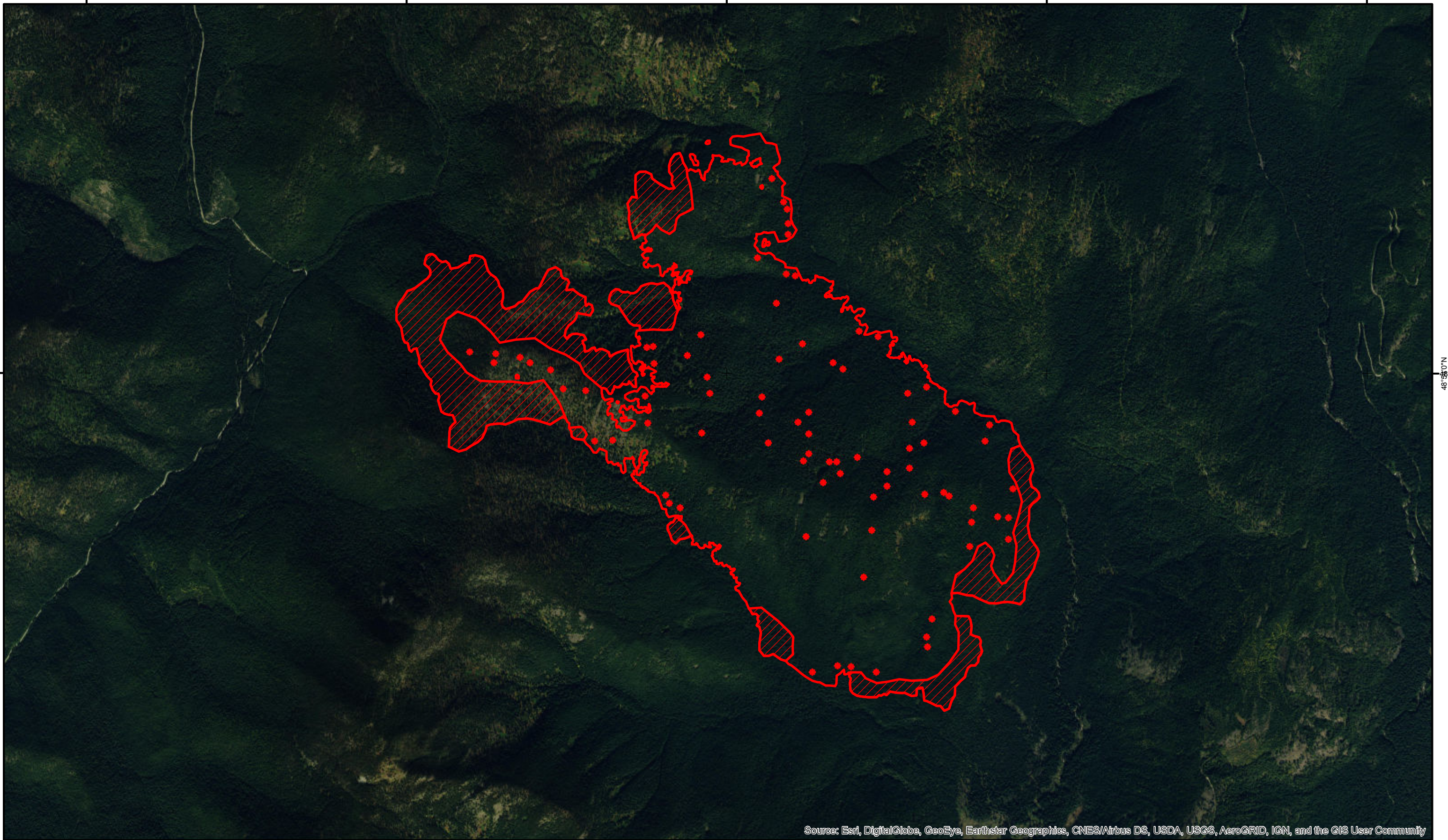


117°6'0"W 117°4'0"W 117°2'0"W 117°0'0"W 116°58'0"W

48°54'0"N
48°56'0"N

48°54'0"N
48°56'0"N



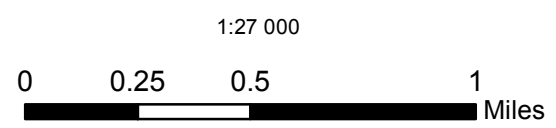
Source: Esri, DigitalGlobe, GeoEye, Earthstar Geographics, CNES/Airbus DS, USDA, USGS, AeroGRID, IGN, and the GIS User Community

117°6'0"W 117°4'0"W 117°2'0"W 117°0'0"W 116°58'0"W

Est. Size: 2,365 acres (heat perimeter)
increase of 170 acres from yesterday



IR Interpreter - Jeff 'Bunk' Twiss



North Fork Hughes
ID-IPF-000165
IR Map
Flown: September 02, 0323 hrs PDT



Legend

- ▭ Heat Perimeter
- ▨ Intense Heat
- ▩ Scattered Heat
- Isolated Heat Sources