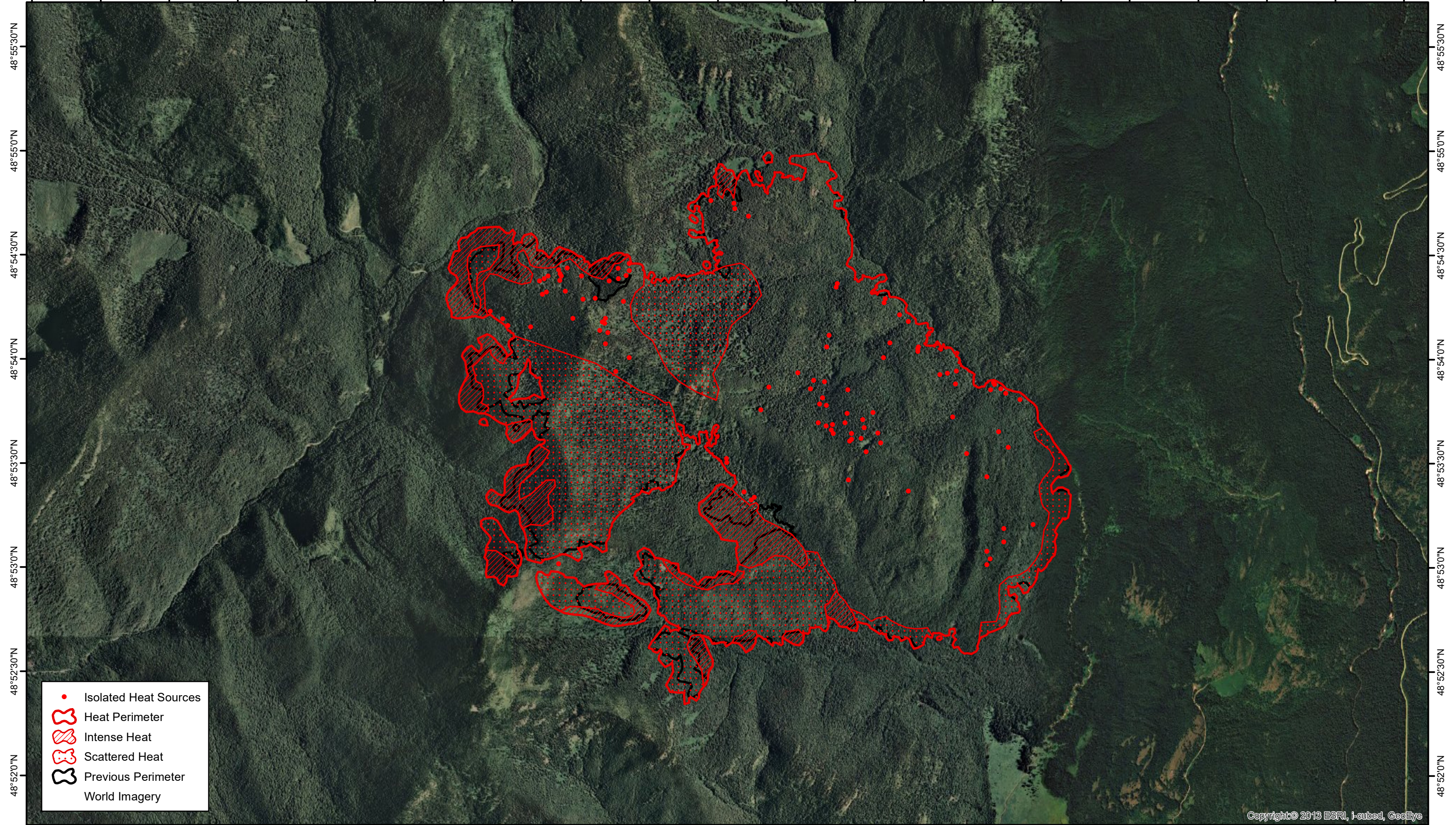


117°7'30"W 117°7'0"W 117°6'30"W 117°6'0"W 117°5'30"W 117°5'0"W 117°4'30"W 117°4'0"W 117°3'30"W 117°3'0"W 117°2'30"W 117°2'0"W 117°1'30"W 117°1'0"W 117°0'30"W 117°0'0"W 116°59'30"W 116°59'0"W 116°58'30"W 116°58'0"W 116°57'30"W



48°55'30"N
48°55'0"N
48°54'30"N
48°54'0"N
48°53'30"N
48°53'0"N
48°52'30"N
48°52'0"N

48°55'30"N
48°55'0"N
48°54'30"N
48°54'0"N
48°53'30"N
48°53'0"N
48°52'30"N
48°52'0"N

- Isolated Heat Sources
- Heat Perimeter
- Intense Heat
- Scattered Heat
- Previous Perimeter
- World Imagery

Copyright © 2013 ESRI, i-cubed, GeoEye

117°7'30"W 117°7'0"W 117°6'30"W 117°6'0"W 117°5'30"W 117°5'0"W 117°4'30"W 117°4'0"W 117°3'30"W 117°3'0"W 117°2'30"W 117°2'0"W 117°1'30"W 117°1'0"W 117°0'30"W 117°0'0"W 116°59'30"W 116°59'0"W 116°58'30"W 116°58'0"W 116°57'30"W

N
0 0.25 0.5 1 Miles
NAD 1983 UTM Zone 11N
Map Published by Brian Mitchell

North Fork Hughes
ID-IPF-000165

Phoenix Sensor Heat Detection
September 9, 2017 at 0049 Hours
3,581 Acres

