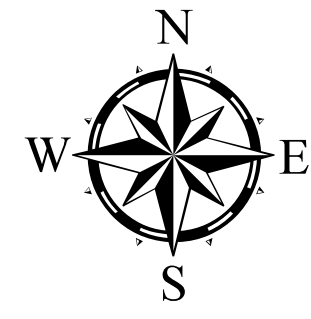


# Park Creek Fire Briefing Map

22 July 2017  
 Park Creek - 2802 Acres  
 Arrastra Creek - 2336 Acres



## Legend

- 20170721\_2309\_ParkCreek\_IsolatedHeatSources
- Drop Point
- Helispot
- Fire Origin
- Water Source
- Division Break
- 7\_5253
- Team IA Responsibility
- Intense Heat
- Scattered Heat
- Heat Perimeter

RCB 22 July 2017 Contour Interval 200 Feet

**NOTAM Number:** FDC 7/5253

**Issue:** July 22, 2017 at 0329 UTC

**Date:** July 22, 2017 at 0329 UTC

**Location:** 38 NM NW HELENA, Montana near HELENA VORTAC (HLN)

**Beginning Date and Time:** July 22, 2017 UTC 1400-0300 Daily

**Ending Date and Time:** August 22, 2017 UTC

**Reason for NOTAM:** TO PROVIDE A SAFE ENVIRONMENT FOR FIRE FIGHTING ACFT

**Type:** Hazards

**Replaced NOTAM(s):** N/A

**Plots May Contact:** SALT LAKE CITY (ZLC) ARTCC, 801-320-2560

**Jump Affected Areas To:** [Operating Restrictions and Requirements](#)  
[Other Information](#)

**Affected Area(s):** [Icon](#)

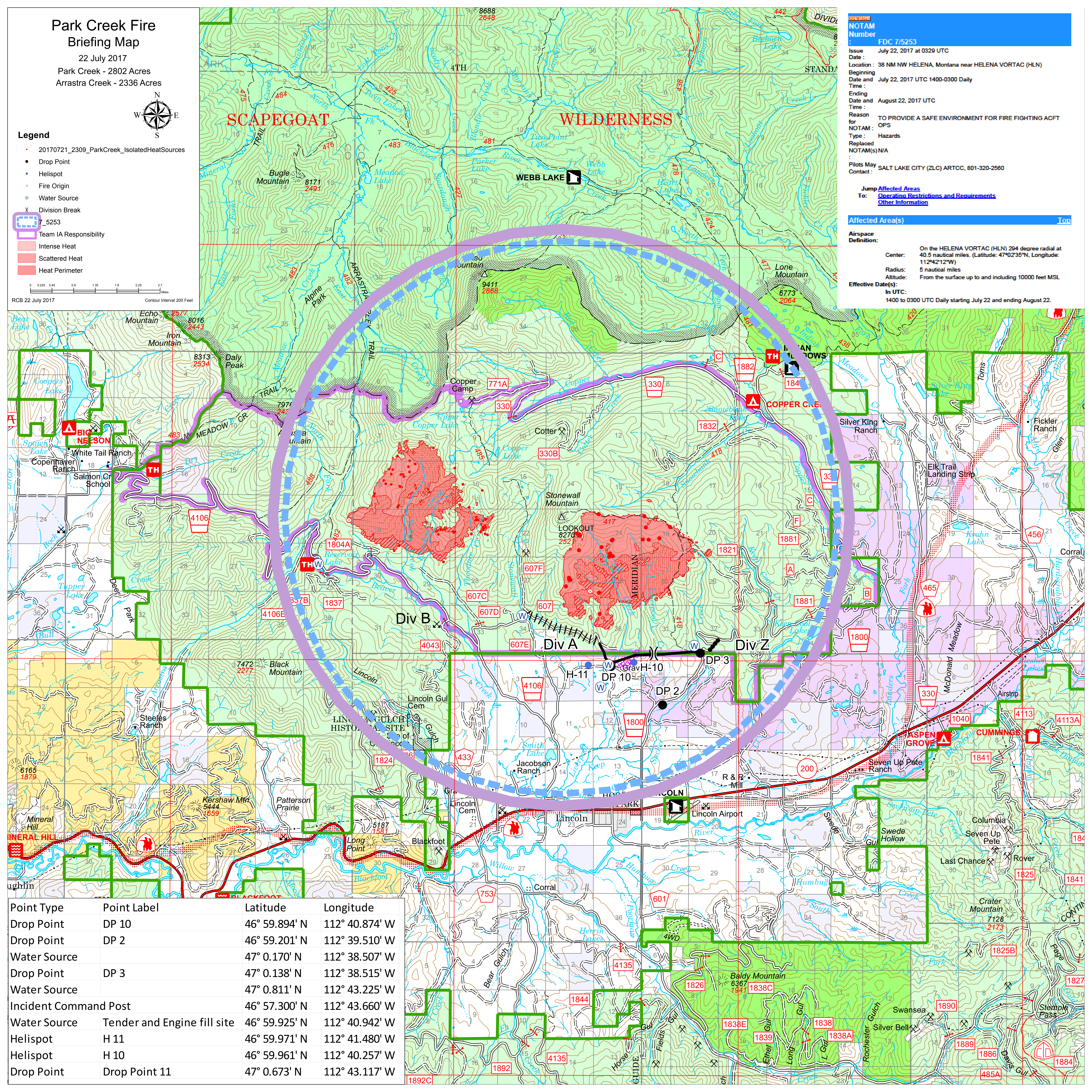
**Airspace Definition:**

**Center:** On the HELENA VORTAC (HLN) 294 degree radial at 40.5 nautical miles. (Latitude: 47°02'35"N, Longitude: 112°42'12"W)

**Radius:** 5 nautical miles

**Altitude:** From the surface up to and including 10000 feet MSL

**Effective Date(s):** In UTC: 1400 to 0300 UTC Daily starting July 22 and ending August 22.



Point Type	Point Label	Latitude	Longitude
Drop Point	DP 10	46° 59.894' N	112° 40.874' W
Drop Point	DP 2	46° 59.201' N	112° 39.510' W
Water Source		47° 0.170' N	112° 38.507' W
Drop Point	DP 3	47° 0.138' N	112° 38.515' W
Water Source		47° 0.811' N	112° 43.225' W
Incident Command Post		46° 57.300' N	112° 43.660' W
Water Source	Tender and Engine fill site	46° 59.925' N	112° 40.942' W
Helispot	H 11	46° 59.971' N	112° 41.480' W
Helispot	H 10	46° 59.961' N	112° 40.257' W
Drop Point	Drop Point 11	47° 0.673' N	112° 43.117' W