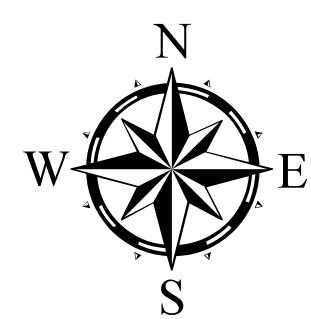


# Park Creek Fire Briefing Map

22 July 2017  
 Park Creek - 2802 Acres  
 Arrastra Creek - 2336 Acres



## Legend

- 20170721\_2309\_ParkCreek\_IsolatedHeatSources
- ⊙ Repeaters
- ⊠ Kestrel Weather Station
- Drop Point
- Helispot
- Fire Origin
- Water Source
- X Division Break
- ⋯ Completed Dozer Line
- Completed Line
- - - Completed Hand Line
- ⋯ Proposed Burnout

RCB 22 July 2017 Contour Interval 200 Feet

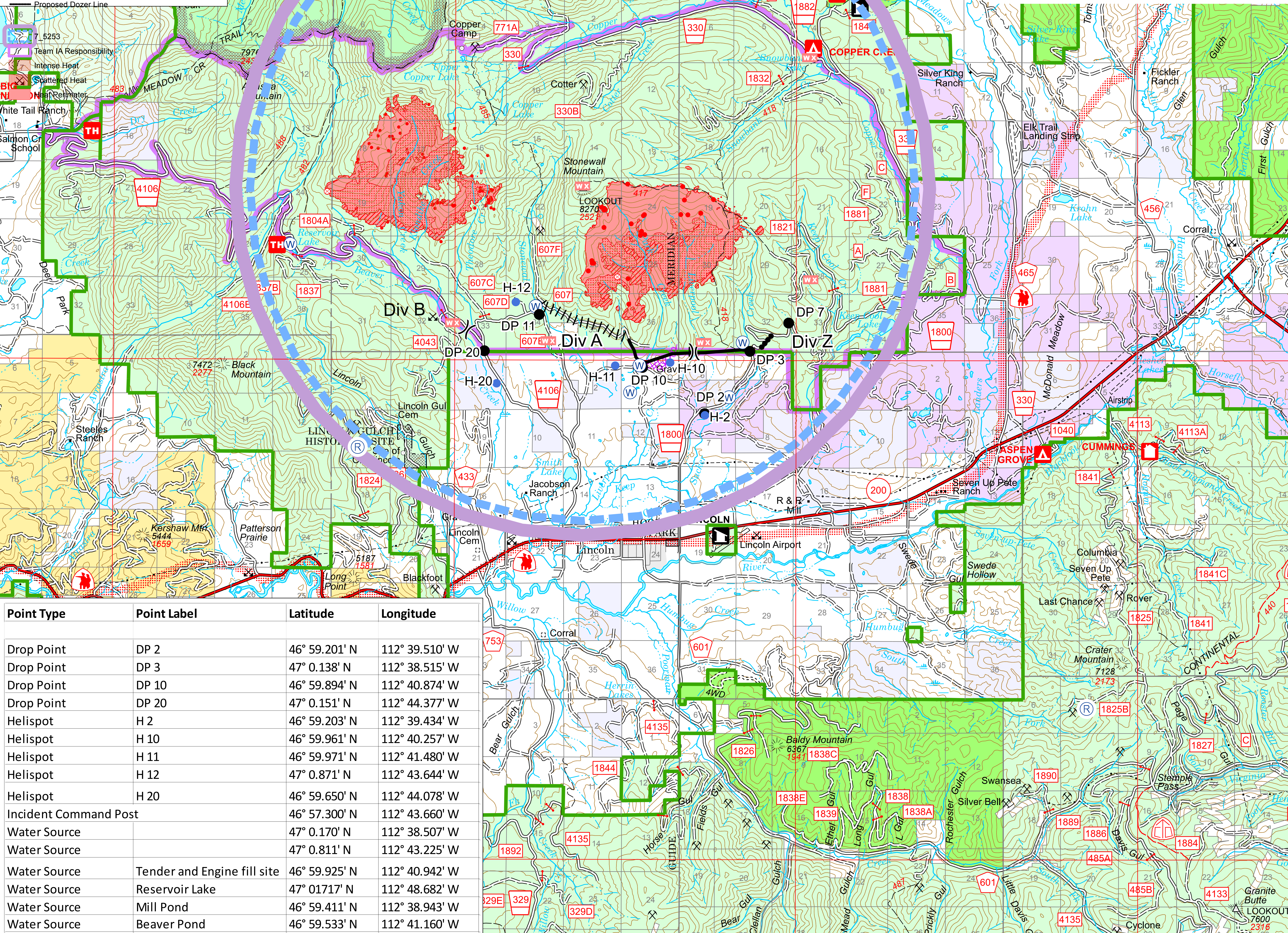
- ⋯ Proposed Dozer Line
- 7, 5253
- Team IA Responsibility
- Intense Heat
- Scattered Heat
- Heat Reflector
- White Tail Ranch
- Salmon Creek School

**NOTAM**  
 Number: FDC 7/5253  
 Issue: July 22, 2017 at 0329 UTC  
 Date: Location: 38 NM NW HELENA, Montana near HELENA VORTAC (HLN)  
 Beginning Date and Time: July 22, 2017 UTC 1400-0300 Daily  
 Ending Date and Time: August 22, 2017 UTC  
 Reason for NOTAM: TO PROVIDE A SAFE ENVIRONMENT FOR FIRE FIGHTING ACFT  
 Type: Hazards  
 Replaced NOTAM(s): N/A  
 Plots May Contact: SALT LAKE CITY (ZLC) ARTCC, 801-320-2560

**Jump Affected Areas**  
 To: [Operating Restrictions and Requirements](#)  
[Other Information](#)

**Affected Area(s)** [Top](#)

**Airspace Definition:**  
 Center: On the HELENA VORTAC (HLN) 294 degree radial at 40.5 nautical miles. (Latitude: 47°02'35"N, Longitude: 112°42'12"W)  
 Radius: 5 nautical miles  
 Altitude: From the surface up to and including 10000 feet MSL  
 Effective Date(s): In UTC: 1400 to 0300 UTC Daily starting July 22 and ending August 22.



Point Type	Point Label	Latitude	Longitude
Drop Point	DP 2	46° 59.201' N	112° 39.510' W
Drop Point	DP 3	47° 0.138' N	112° 38.515' W
Drop Point	DP 10	46° 59.894' N	112° 40.874' W
Drop Point	DP 20	47° 0.151' N	112° 44.377' W
Helispot	H 2	46° 59.203' N	112° 39.434' W
Helispot	H 10	46° 59.961' N	112° 40.257' W
Helispot	H 11	46° 59.971' N	112° 41.480' W
Helispot	H 12	47° 0.871' N	112° 43.644' W
Helispot	H 20	46° 59.650' N	112° 44.078' W
Incident Command Post		46° 57.300' N	112° 43.660' W
Water Source		47° 0.170' N	112° 38.507' W
Water Source		47° 0.811' N	112° 43.225' W
Water Source	Tender and Engine fill site	46° 59.925' N	112° 40.942' W
Water Source	Reservoir Lake	47° 01'17" N	112° 48.682' W
Water Source	Mill Pond	46° 59.411' N	112° 38.943' W
Water Source	Beaver Pond	46° 59.533' N	112° 41.160' W