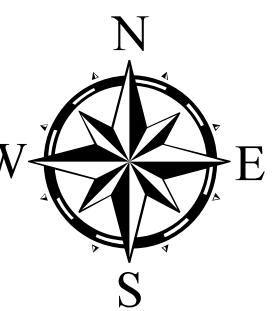


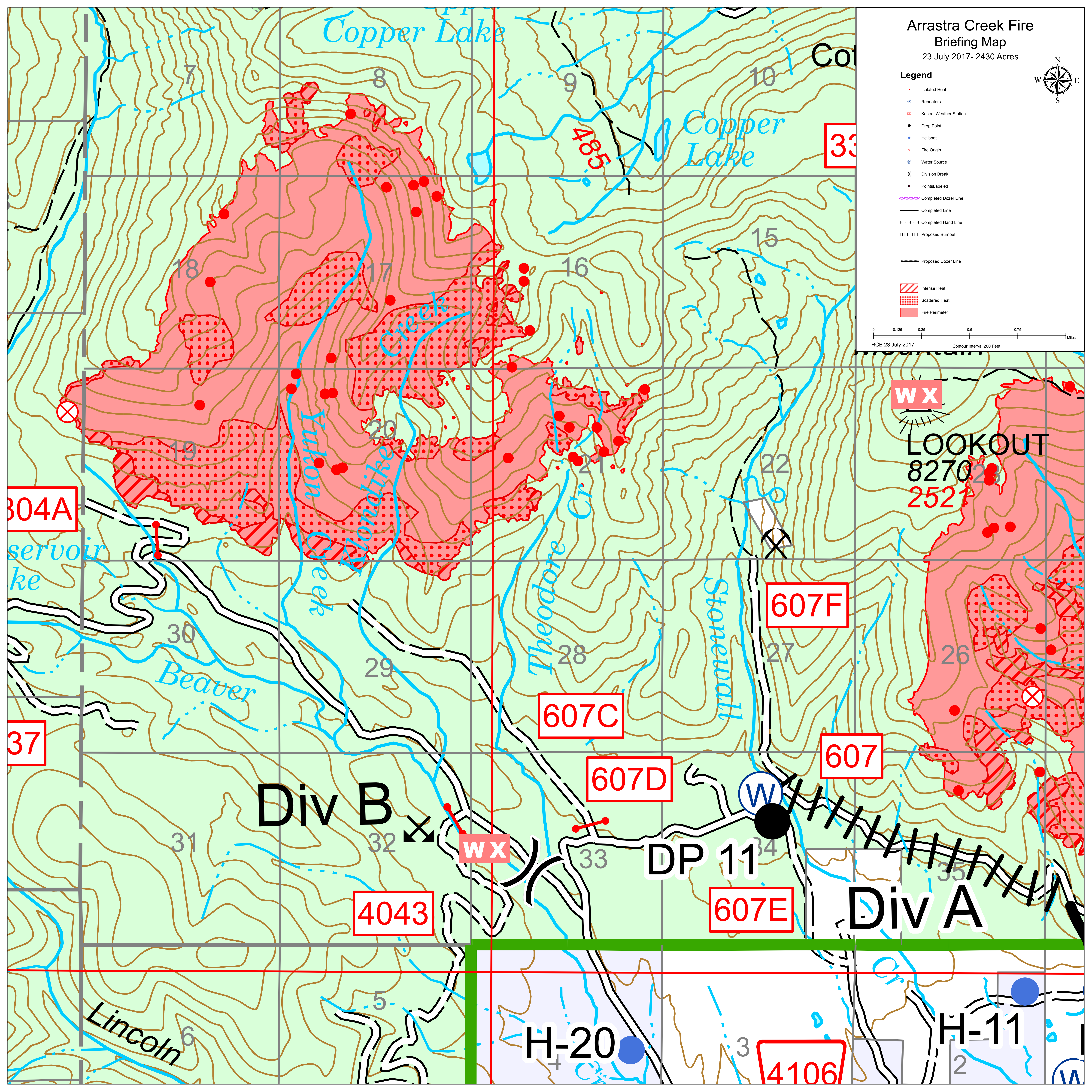
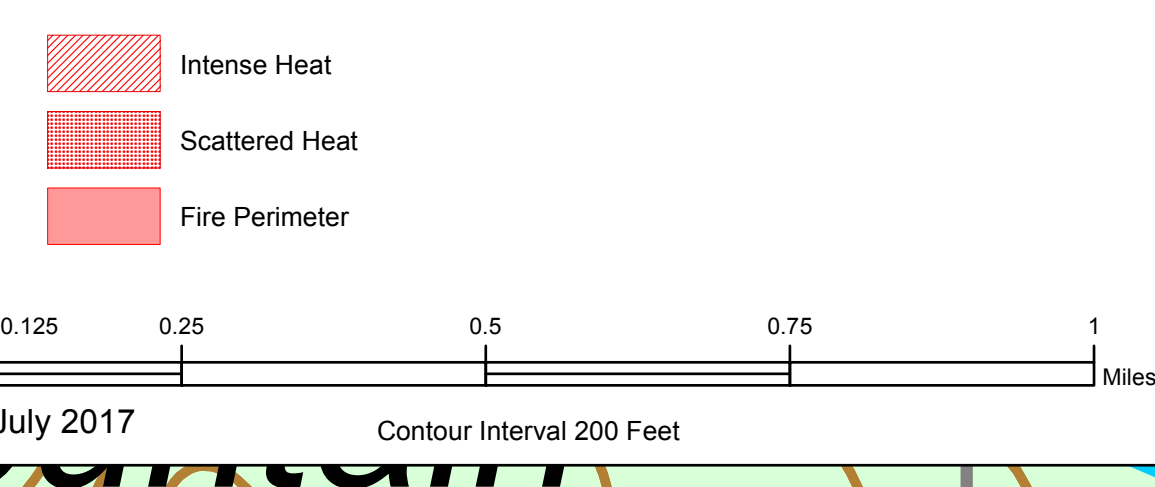
Arrastra Creek Fire Briefing Map

23 July 2017 - 2430 Acres



Legend

- Isolated Heat
- Repeaters
- Kestrel Weather Station
- Drop Point
- Helispot
- Fire Origin
- Water Source
- Division Break
- Points Labeled
- Completed Dozer Line
- Completed Line
- Completed Hand Line
- Proposed Burnout
- Proposed Dozer Line



33

WX
LOOKOUT
827028
2521

304A

607F

37

607C

607

Div B

607D

DP 11

Div A

4043

607E

H-20

4106

H-11

Lincoln

reservoir
ke

Beaver

Yulon
Creek

Theodore
Cr.

Stonewall

Copper Lake

Copper
Lake