

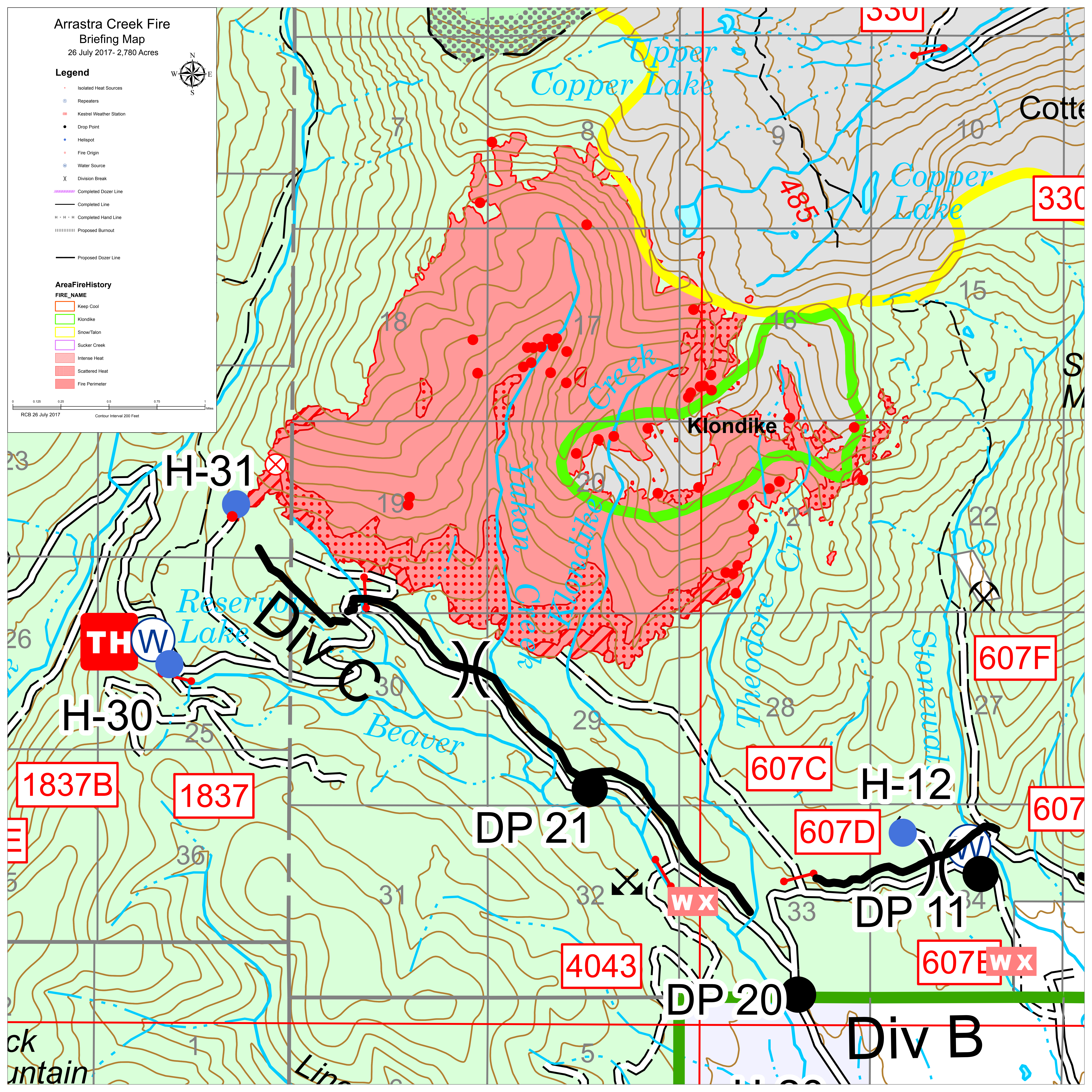
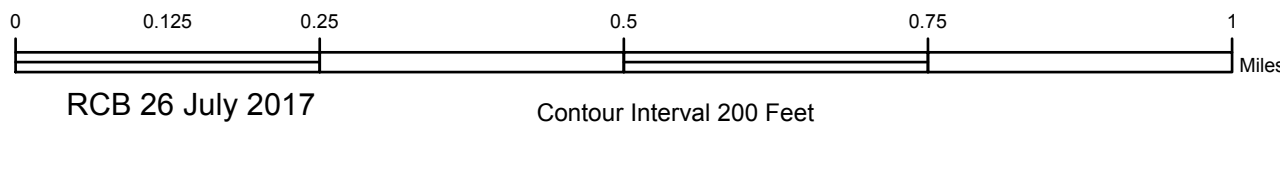
Arrastra Creek Fire
Briefing Map
26 July 2017 - 2,780 Acres

Legend

- Isolated Heat Sources
- Repeaters
- Kestrel Weather Station
- Drop Point
- Helispot
- Fire Origin
- Water Source
- Division Break
- Completed Dozer Line
- Completed Line
- Completed Hand Line
- Proposed Burnout
- Proposed Dozer Line

AreaFireHistory

- FIRE_NAME
- Keep Cool
 - Klondike
 - Snow/Talon
 - Sucker Creek
 - Intense Heat
 - Scattered Heat
 - Fire Perimeter



H-31

THW

H-30

1837B

1837

DP 21

607C

H-12

607D

4043

DP 20

DP 11

607E WX

Div B

607F

607

ck
ountain

Line

Upper
Copper Lake

Yukon
Creek
Klondike
Creek

Theodore
Cr.

Copper
Lake

Stonewall

Cotte

S
M