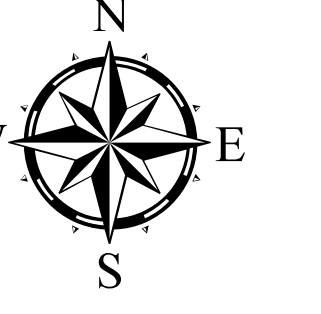
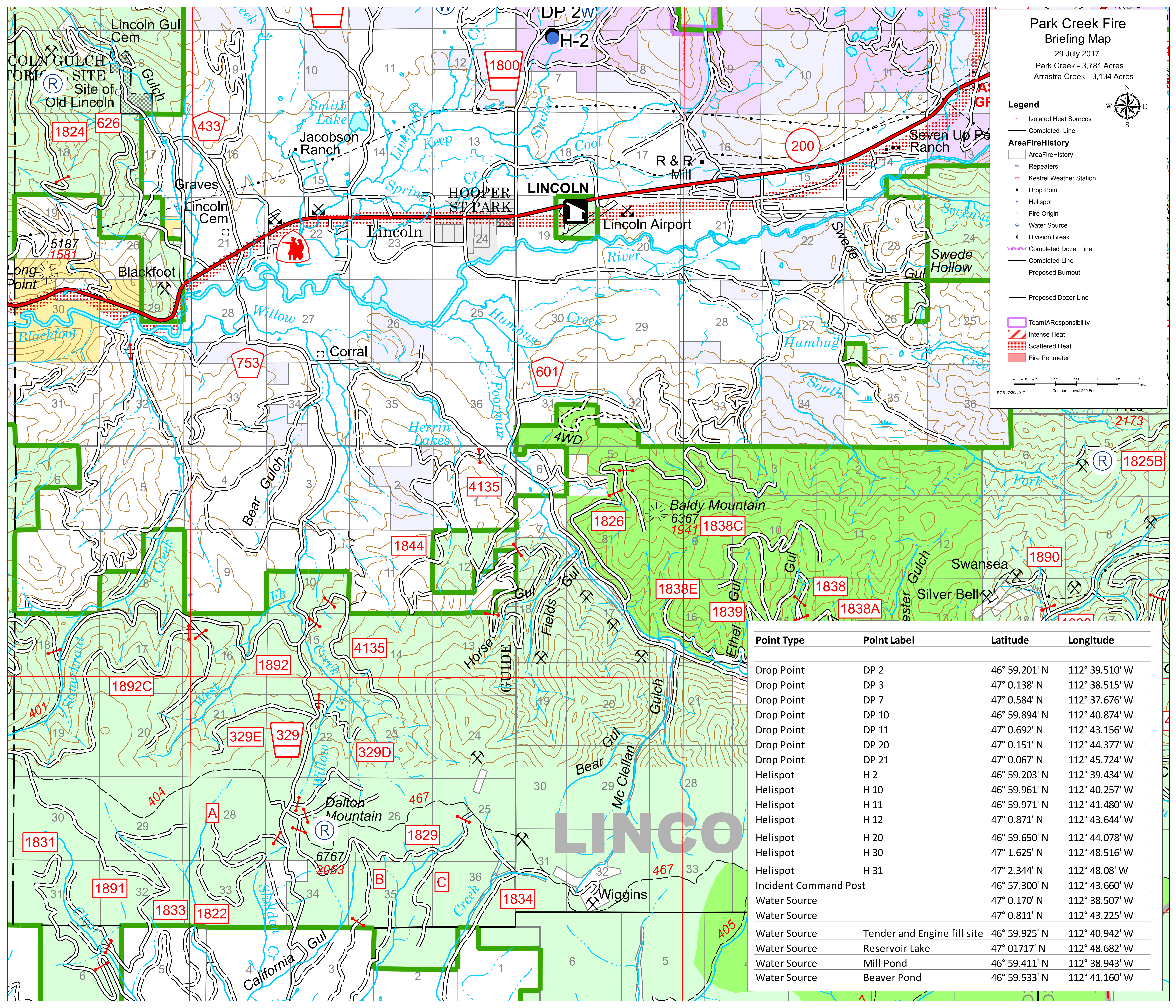
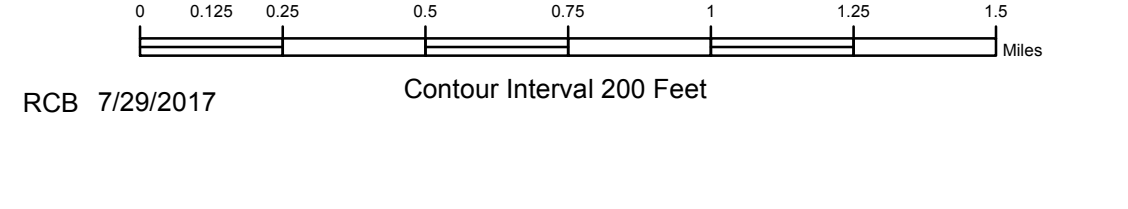


Park Creek Fire Briefing Map

29 July 2017
 Park Creek - 3,781 Acres
 Arrastra Creek - 3,134 Acres



- Legend**
- Isolated Heat Sources
 - Completed_Line
 - AreaFireHistory**
 - AreaFireHistory
 - Repeaters
 - Kestrel Weather Station
 - Drop Point
 - Helispot
 - Fire Origin
 - Water Source
 - Division Break
 - Completed Dozer Line
 - Completed Line
 - Proposed Burnout
 - Proposed Dozer Line
 - TeamIAResponsibility
 - Intense Heat
 - Scattered Heat
 - Fire Perimeter



Point Type	Point Label	Latitude	Longitude
Drop Point	DP 2	46° 59.201' N	112° 39.510' W
Drop Point	DP 3	47° 0.138' N	112° 38.515' W
Drop Point	DP 7	47° 0.584' N	112° 37.676' W
Drop Point	DP 10	46° 59.894' N	112° 40.874' W
Drop Point	DP 11	47° 0.692' N	112° 43.156' W
Drop Point	DP 20	47° 0.151' N	112° 44.377' W
Drop Point	DP 21	47° 0.067' N	112° 45.724' W
Helispot	H 2	46° 59.203' N	112° 39.434' W
Helispot	H 10	46° 59.961' N	112° 40.257' W
Helispot	H 11	46° 59.971' N	112° 41.480' W
Helispot	H 12	47° 0.871' N	112° 43.644' W
Helispot	H 20	46° 59.650' N	112° 44.078' W
Helispot	H 30	47° 1.625' N	112° 48.516' W
Helispot	H 31	47° 2.344' N	112° 48.08' W
Incident Command Post		46° 57.300' N	112° 43.660' W
Water Source		47° 0.170' N	112° 38.507' W
Water Source		47° 0.811' N	112° 43.225' W
Water Source	Tender and Engine fill site	46° 59.925' N	112° 40.942' W
Water Source	Reservoir Lake	47° 01.717' N	112° 48.682' W
Water Source	Mill Pond	46° 59.411' N	112° 38.943' W
Water Source	Beaver Pond	46° 59.533' N	112° 41.160' W