

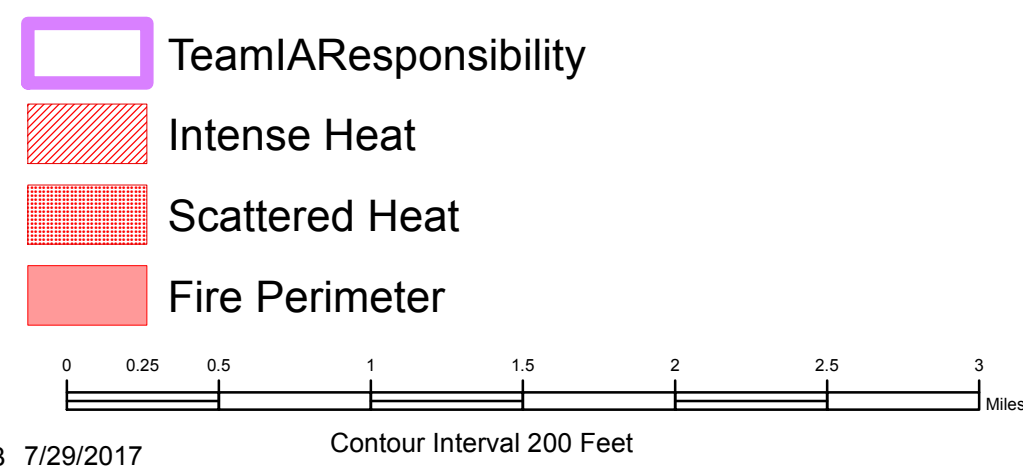
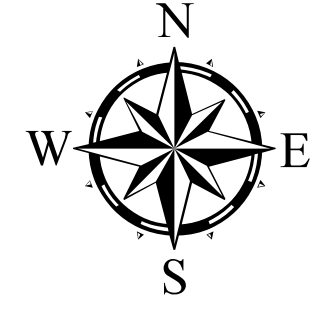
# Park Creek Fire Briefing Map

29 July 2017

Park Creek - 3,781 Acres  
 Arrastra Creek - 3,134 Acres

## Legend

- Isolated Heat Sources
- Completed\_Line
- AreaFireHistory
- Repeaters
- Kestrel Weather Station
- Drop Point
- Helispot
- Fire Origin
- Water Source
- Division Break
- Completed Dozer Line
- Completed Line
- Proposed Burnout
- Proposed Dozer Line
- TeamIAResponsibility
- Intense Heat
- Scattered Heat
- Fire Perimeter

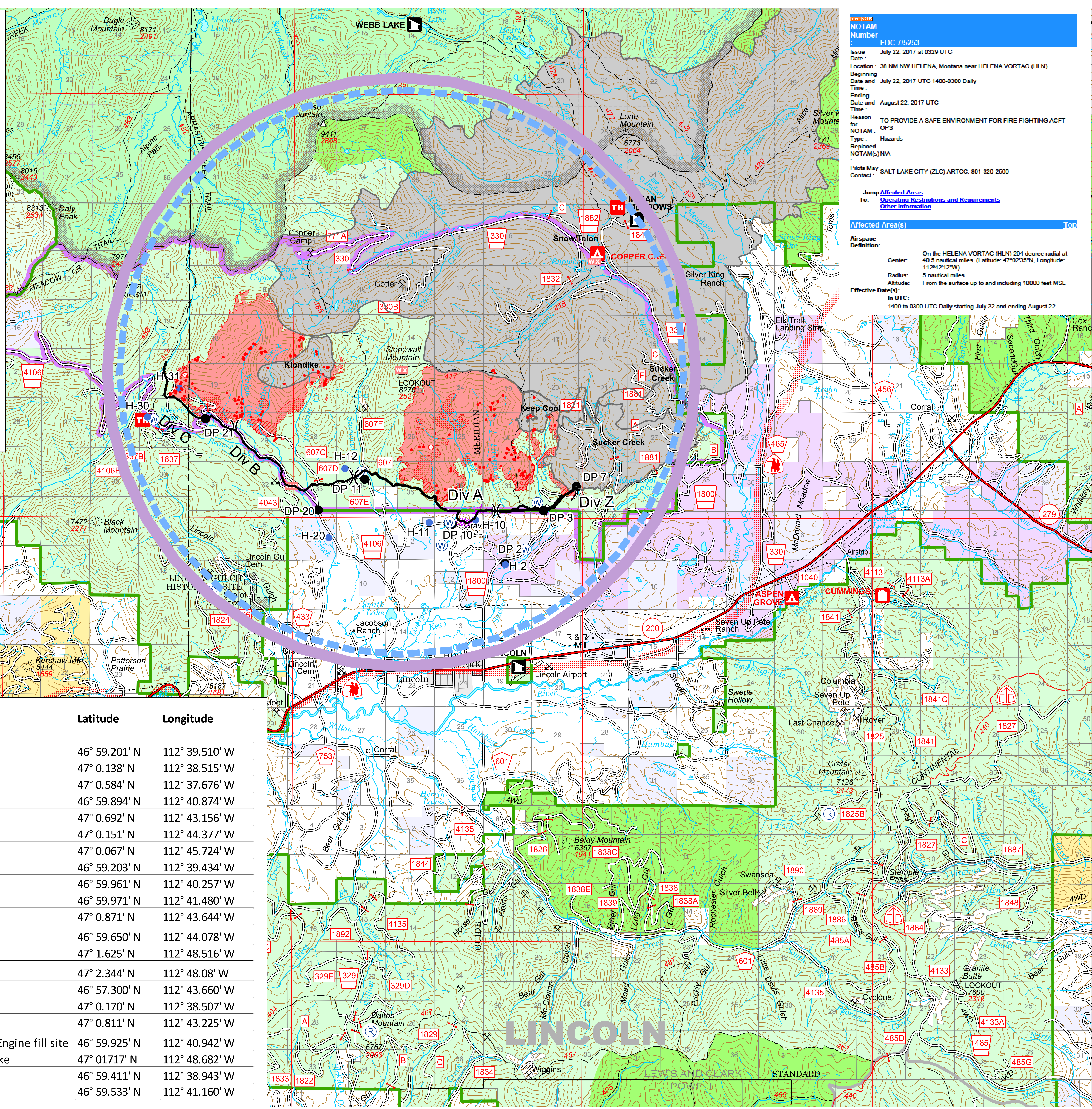


**NOTAM**  
 Number : FDC 7/5253  
 Issue Date : July 22, 2017 at 0329 UTC  
 Location : 38 NM NW HELENA, Montana near HELENA VORTAC (HLN)  
 Beginning Date and Time : July 22, 2017 UTC 1400-0300 Daily  
 Ending Date and Time : August 22, 2017 UTC  
 Reason for NOTAM : TO PROVIDE A SAFE ENVIRONMENT FOR FIRE FIGHTING ACFT OPS  
 Type : Hazards  
 Replaced NOTAM(s) : N/A  
 Pilots May Contact : SALT LAKE CITY (ZLC) ARTCC, 801-320-2560

**Jump Affected Areas**  
 To: [Operating Restrictions and Requirements](#)  
[Other Information](#)

**Affected Area(s)** [Top](#)

**Airspace Definition:**  
 Center: On the HELENA VORTAC (HLN) 294 degree radial at 40.5 nautical miles. (Latitude: 47°02'35"N, Longitude: 112°42'12"W)  
 Radius: 5 nautical miles  
 Altitude: From the surface up to and including 10000 feet MSL  
 Effective Date(s) in UTC: 1400 to 0300 UTC Daily starting July 22 and ending August 22.



Point Type	Point Label	Latitude	Longitude
Drop Point	DP 2	46° 59.201' N	112° 39.510' W
Drop Point	DP 3	47° 0.138' N	112° 38.515' W
Drop Point	DP 7	47° 0.584' N	112° 37.676' W
Drop Point	DP 10	46° 59.894' N	112° 40.874' W
Drop Point	DP 11	47° 0.692' N	112° 43.156' W
Drop Point	DP 20	47° 0.151' N	112° 44.377' W
Drop Point	DP 21	47° 0.067' N	112° 45.724' W
Helispot	H 2	46° 59.203' N	112° 39.434' W
Helispot	H 10	46° 59.961' N	112° 40.257' W
Helispot	H 11	46° 59.971' N	112° 41.480' W
Helispot	H 12	47° 0.871' N	112° 43.644' W
Helispot	H 20	46° 59.650' N	112° 44.078' W
Helispot	H 30	47° 1.625' N	112° 48.516' W
Helispot	H 31	47° 2.344' N	112° 48.08' W
Incident Command Post		46° 57.300' N	112° 43.660' W
Water Source		47° 0.170' N	112° 38.507' W
Water Source		47° 0.811' N	112° 43.225' W
Water Source	Tender and Engine fill site	46° 59.925' N	112° 40.942' W
Water Source	Reservoir Lake	47° 01'17" N	112° 48.682' W
Water Source	Mill Pond	46° 59.411' N	112° 38.943' W
Water Source	Beaver Pond	46° 59.533' N	112° 41.160' W