

Park Creek & Arrastra Creek Fires

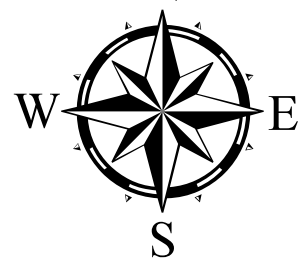
Briefing Map

31 July 2017

Park Creek - 4,291 Acres
Arrastra Creek - 3,331 Acres

Legend

- Isolated Heat Sources
- Completed_Line
- 7-5253
- AreaFireHistory**
- AreaFireHistory
- Repeaters
- Kestrel Weather Station
- Drop Point
- Helispot
- Fire Origin
- Water Source
- Division Break
- Completed Dozer Line
- Completed Line
- Proposed Burnout
- Proposed Dozer Line
- TeamIAResponsibility**
- Intense Heat
- Scattered Heat
- Fire Perimeter



RCB 7/31/2017 Contour Interval 200 Feet

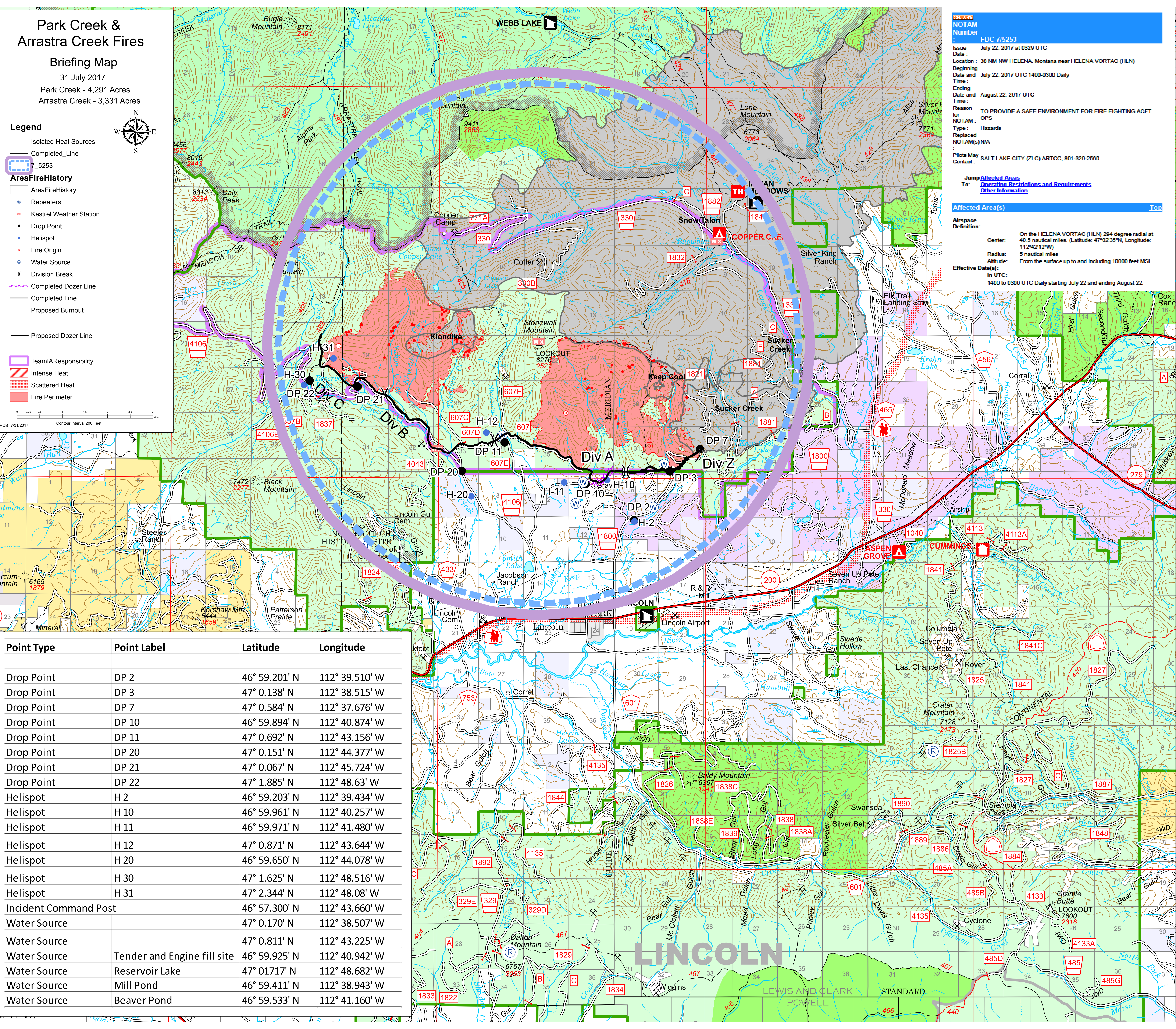
NOTAM
Number: FDC 7/5253
Issue Date: July 22, 2017 at 0329 UTC
Location: 38 NM NW HELENA, Montana near HELENA VORTAC (HLN)
Beginning Date and Time: July 22, 2017 UTC 1400-0300 Daily
Ending Date and Time: August 22, 2017 UTC
Reason for NOTAM: TO PROVIDE A SAFE ENVIRONMENT FOR FIRE FIGHTING ACFT
Type: Hazards
Replaced NOTAM(s): N/A
Pilots May Contact: SALT LAKE CITY (ZLC) ARTCC, 801-320-2560

Jump Affected Areas
To: [Operating Restrictions and Requirements](#)
[Other Information](#)

Affected Area(s)

Airspace Definition:
Center: On the HELENA VORTAC (HLN) 294 degree radial at 40.5 nautical miles. (Latitude: 47°02'35"N, Longitude: 112°42'12"W)
Radius: 5 nautical miles
Altitude: From the surface up to and including 10000 feet MSL
Effective Date(s) in UTC: 1400 to 0300 UTC Daily starting July 22 and ending August 22.

Point Type	Point Label	Latitude	Longitude
Drop Point	DP 2	46° 59.201' N	112° 39.510' W
Drop Point	DP 3	47° 0.138' N	112° 38.515' W
Drop Point	DP 7	47° 0.584' N	112° 37.676' W
Drop Point	DP 10	46° 59.894' N	112° 40.874' W
Drop Point	DP 11	47° 0.692' N	112° 43.156' W
Drop Point	DP 20	47° 0.151' N	112° 44.377' W
Drop Point	DP 21	47° 0.067' N	112° 45.724' W
Drop Point	DP 22	47° 1.885' N	112° 48.63' W
Helispot	H 2	46° 59.203' N	112° 39.434' W
Helispot	H 10	46° 59.961' N	112° 40.257' W
Helispot	H 11	46° 59.971' N	112° 41.480' W
Helispot	H 12	47° 0.871' N	112° 43.644' W
Helispot	H 20	46° 59.650' N	112° 44.078' W
Helispot	H 30	47° 1.625' N	112° 48.516' W
Helispot	H 31	47° 2.344' N	112° 48.08' W
Incident Command Post		46° 57.300' N	112° 43.660' W
Water Source		47° 0.170' N	112° 38.507' W
Water Source		47° 0.811' N	112° 43.225' W
Water Source	Tender and Engine fill site	46° 59.925' N	112° 40.942' W
Water Source	Reservoir Lake	47° 0.1717' N	112° 48.682' W
Water Source	Mill Pond	46° 59.411' N	112° 38.943' W
Water Source	Beaver Pond	46° 59.533' N	112° 41.160' W



LINCOLN