

# Park Creek & Arrastra Creek Fires

## Briefing Map

1 Aug 2017

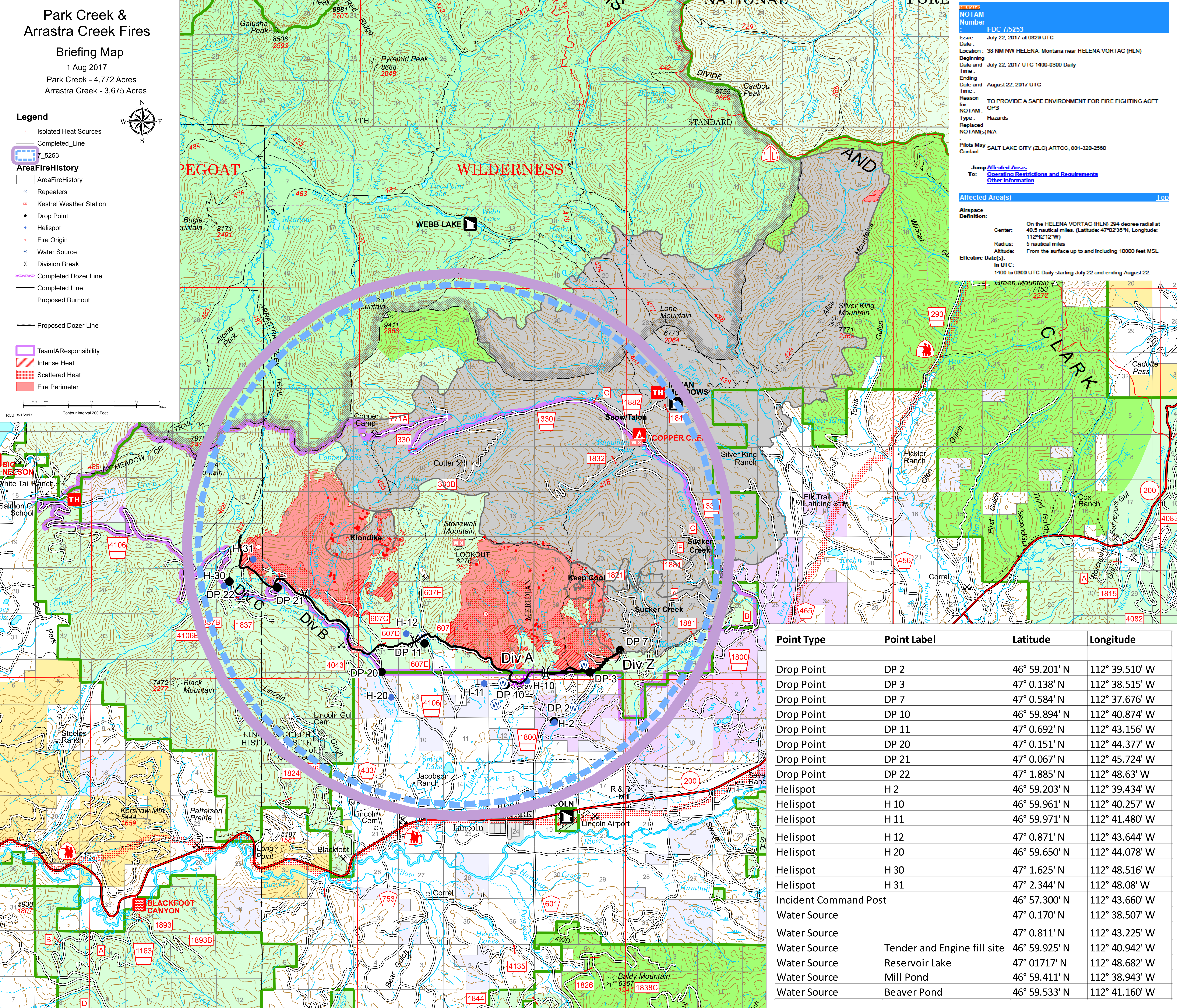
Park Creek - 4,772 Acres  
Arrastra Creek - 3,675 Acres

### Legend

- Isolated Heat Sources
- Completed\_Line
- 7-5253
- AreaFireHistory
- Repeaters
- Kestrel Weather Station
- Drop Point
- Helispot
- Fire Origin
- Water Source
- Division Break
- Completed Dozer Line
- Completed Line
- Proposed Burnout
- Proposed Dozer Line

- TeamIAResponsibility
- Intense Heat
- Scattered Heat
- Fire Perimeter

RCB 8/1/2017 Contour Interval 200 Feet



**NOTAM**  
Number : FDC 7/5253  
Issue Date : July 22, 2017 at 0329 UTC  
Location : 38 NM NW HELENA, Montana near HELENA VORTAC (HLN)  
Beginning Date and Time : July 22, 2017 UTC 1400-0300 Daily  
Ending Date and Time : August 22, 2017 UTC  
Reason for NOTAM : TO PROVIDE A SAFE ENVIRONMENT FOR FIRE FIGHTING ACFT  
Type : Hazards  
Replaced NOTAM(s) : N/A  
Pilots May Contact : SALT LAKE CITY (ZLC) ARTCC, 801-320-2560

**Jump Affected Areas**  
To : [Operating Restrictions and Requirements](#)  
[Other Information](#)

**Affected Area(s)** [Top](#)

**Airspace Definition:**  
Center: On the HELENA VORTAC (HLN) 294 degree radial at 40.5 nautical miles. (Latitude: 47°02'35"N, Longitude: 112°42'12"W)  
Radius: 5 nautical miles  
Altitude: From the surface up to and including 10000 feet MSL  
Effective Date(s) in UTC: 1400 to 0300 UTC Daily starting July 22 and ending August 22.

| Point Type            | Point Label                 | Latitude      | Longitude      |
|-----------------------|-----------------------------|---------------|----------------|
| Drop Point            | DP 2                        | 46° 59.201' N | 112° 39.510' W |
| Drop Point            | DP 3                        | 47° 0.138' N  | 112° 38.515' W |
| Drop Point            | DP 7                        | 47° 0.584' N  | 112° 37.676' W |
| Drop Point            | DP 10                       | 46° 59.894' N | 112° 40.874' W |
| Drop Point            | DP 11                       | 47° 0.692' N  | 112° 43.156' W |
| Drop Point            | DP 20                       | 47° 0.151' N  | 112° 44.377' W |
| Drop Point            | DP 21                       | 47° 0.067' N  | 112° 45.724' W |
| Drop Point            | DP 22                       | 47° 1.885' N  | 112° 48.63' W  |
| Helispot              | H 2                         | 46° 59.203' N | 112° 39.434' W |
| Helispot              | H 10                        | 46° 59.961' N | 112° 40.257' W |
| Helispot              | H 11                        | 46° 59.971' N | 112° 41.480' W |
| Helispot              | H 12                        | 47° 0.871' N  | 112° 43.644' W |
| Helispot              | H 20                        | 46° 59.650' N | 112° 44.078' W |
| Helispot              | H 30                        | 47° 1.625' N  | 112° 48.516' W |
| Helispot              | H 31                        | 47° 2.344' N  | 112° 48.08' W  |
| Incident Command Post |                             | 46° 57.300' N | 112° 43.660' W |
| Water Source          |                             | 47° 0.170' N  | 112° 38.507' W |
| Water Source          |                             | 47° 0.811' N  | 112° 43.225' W |
| Water Source          | Tender and Engine fill site | 46° 59.925' N | 112° 40.942' W |
| Water Source          | Reservoir Lake              | 47° 01'17" N  | 112° 48.682' W |
| Water Source          | Mill Pond                   | 46° 59.411' N | 112° 38.943' W |
| Water Source          | Beaver Pond                 | 46° 59.533' N | 112° 41.160' W |