

Park Creek, Arrastra Creek Alice Creek Fires

AirOps Map

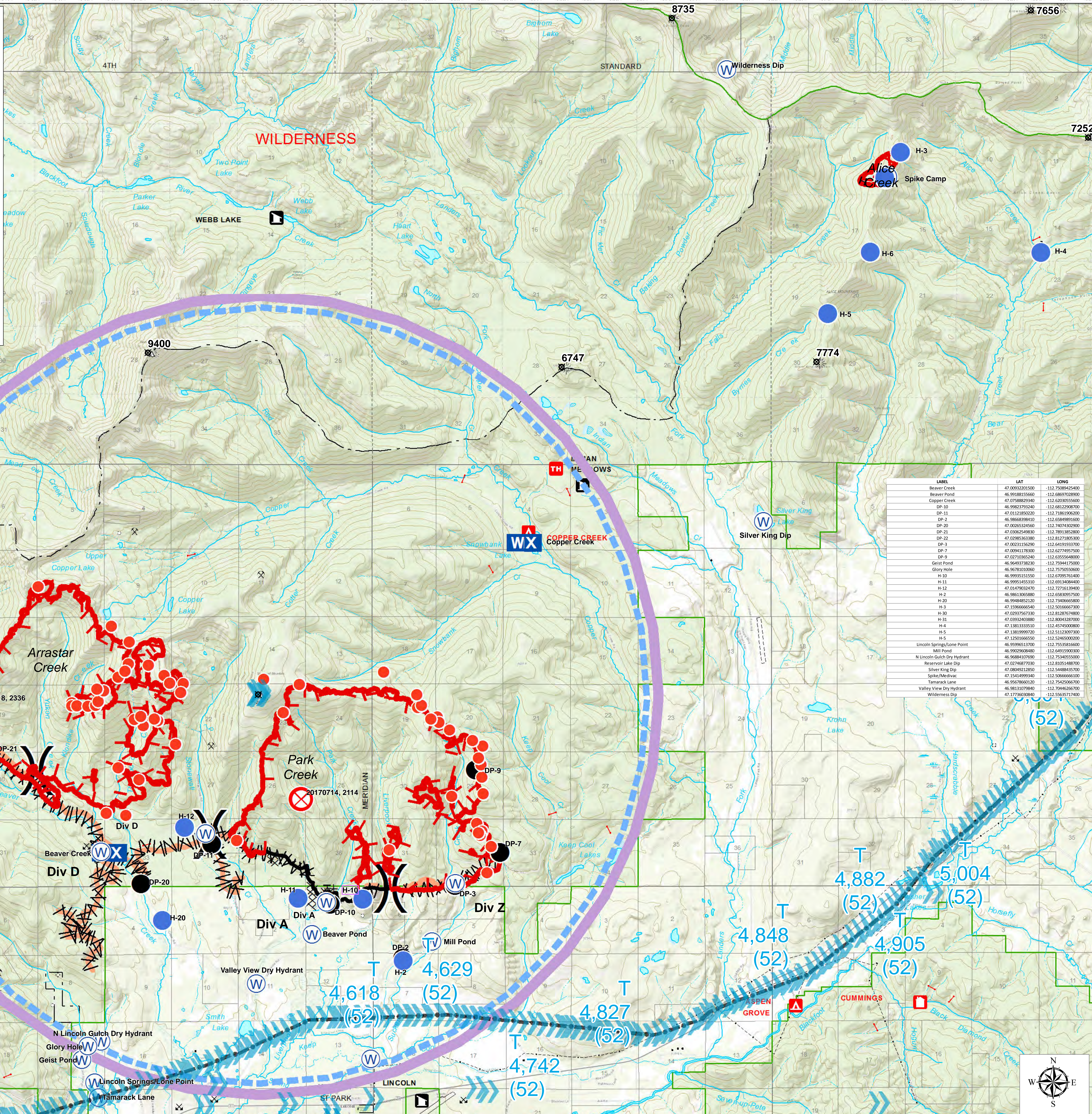
7 Aug 2017

--- Uncontrolled Fire Edge
 Completed Dozer Line
 Hand Line
 Road as Completed Line
 Completed Fuel Break
 Transmission Lines
 TFR

● Helispot
● Drop Point
 Unimproved Landing Site
W Water Source
WX Mobile Weather Unit
C Camp
⊗ Fire Origin
● Hot Spot

Division
 Lookout

0 0.25 0.5 1 1.5 2 2.5 3 3.5 Miles
 DMH 8/7/2017 Contour Interval 200 Feet



LABEL	LAT	LONG
Beaver Creek	47.0932201500	-112.7508942500
Beaver Pond	46.9918815560	-112.6869702800
Copper Creek	47.0758882940	-112.6203555600
DP-10	46.9982379320	-112.6812290870
DP-11	47.0112185020	-112.7186190620
DP-2	46.9868398410	-112.6584891600
DP-20	47.0206533450	-112.6270320900
DP-21	47.0306254980	-112.7891382800
DP-22	47.0298536380	-112.8127180530
DP-3	47.0023115620	-112.6419193700
DP-7	47.0094117830	-112.6277495750
DP-9	47.0271036200	-112.6355468000
Geist Pond	46.9649373820	-112.7594417500
Glory Hole	46.9678101060	-112.7575550600
H-10	46.9993515150	-112.6709576100
H-11	46.9995145310	-112.6913616400
H-12	47.0147623470	-112.7216339400
H-2	46.9863306580	-112.6583095700
H-20	46.9948482120	-112.7340666800
H-3	47.1596666540	-112.5016666700
H-30	47.0293756730	-112.8128767400
H-31	47.0393240380	-112.8004329700
H-4	47.1381333350	-112.4574500800
H-5	47.1381999720	-112.5112309700
H-5	47.1292166650	-112.5246000200
Lincoln Springs/Lone Point	46.9596951370	-112.7553818600
Mill Pond	46.9929296940	-112.6491550900
N Lincoln Gulch Dry Hydrant	46.9688407690	-112.7534055000
Reservoir Lake Dip	47.0274887030	-112.8105148870
Silver King Dip	47.0804921280	-112.5448849370
Silver Meadow	47.1541699340	-112.5266666600
Tamarack Lane	46.9562866120	-112.7542506670
Valley View Dry Hydrant	46.9813107980	-112.7044626670
Wilderness Dip	47.1773603080	-112.5563717400

