














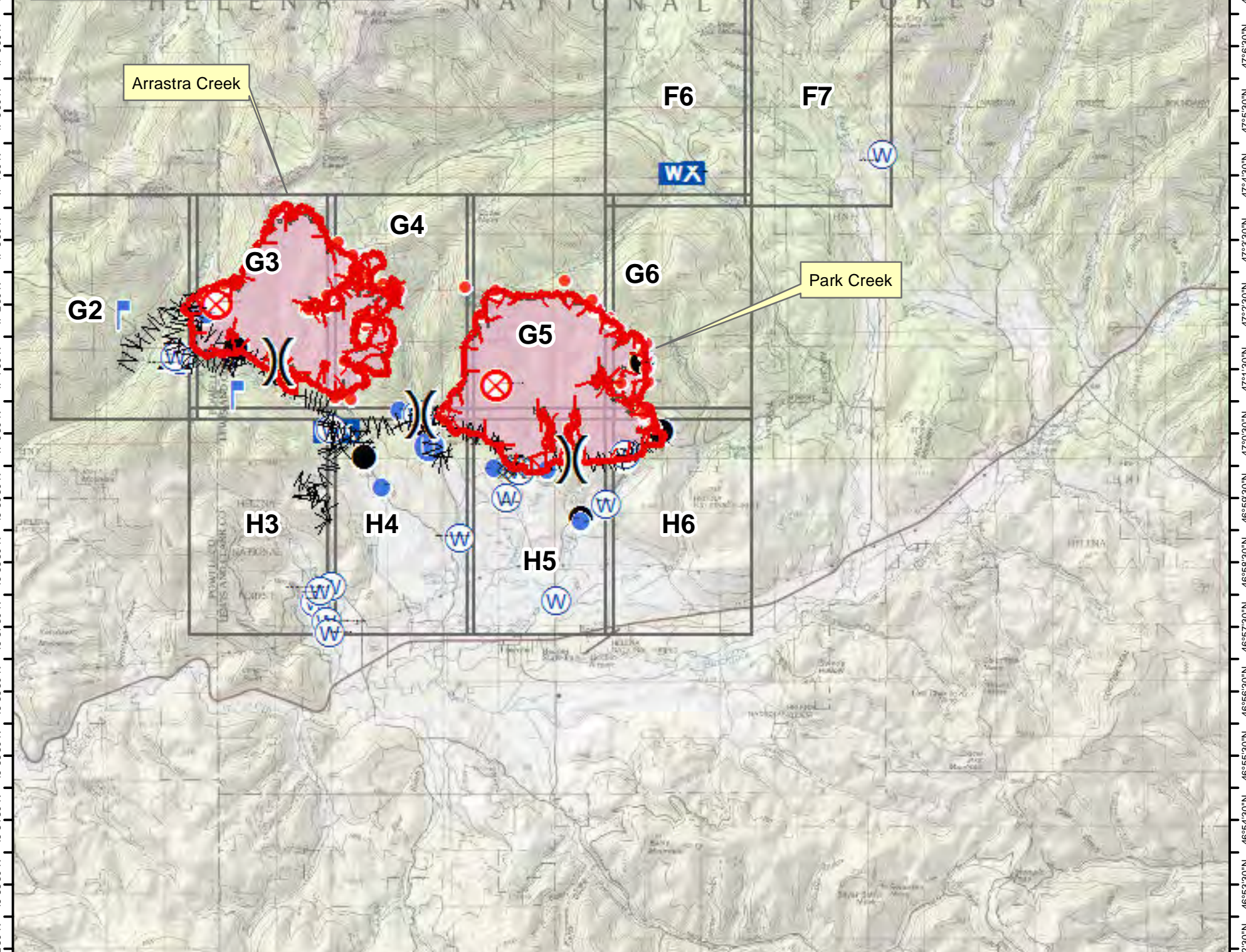
112°52'0"W 112°50'30"W 112°49'0"W 112°47'30"W 112°46'0"W 112°44'30"W 112°43'0"W 112°41'30"W 112°40'0"W 112°38'30"W 112°37'0"W 112°35'30"W 112°34'0"W 112°32'30"W 112°31'0"W 112°29'30"W 112°28'0"W 112°26'30"W 112°25'0"W

47°18'30"N 47°17'30"N 47°16'30"N 47°15'30"N 47°14'30"N 47°13'30"N 47°12'30"N 47°11'30"N 47°10'30"N 47°9'30"N 47°8'30"N 47°7'30"N 47°6'30"N 47°5'30"N 47°4'30"N 47°3'30"N 47°2'30"N 47°1'30"N 47°0'30"N 46°59'30"N 46°58'30"N 46°57'30"N 46°56'30"N 46°55'30"N 46°54'30"N 46°53'30"N 46°52'30"N 46°51'30"N 46°50'30"N

# IAP Overview & Legend

-  Uncontrolled Fire Edge
-  Completed Dozer Line
-  H - H Hand Line
-  R - R Road as Completed Line
-  Completed Fuel Break
-  Camp
-  Drop Point
-  Fire Origin
-  Helispot
-  Hot Spot
-  Lookout
-  Unimproved Landing Site
-  Mobile Weather Unit
-  Safety Zone
-  Water Source


Coordinate System: WGS 1984 Web Mercator Auxiliary Sphere  
Projection: Mercator Auxiliary Sphere  
Datum: WGS 1984



Arrastra Creek

Alice Creek


Park Creek

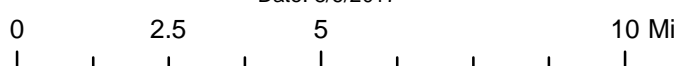



## Park Creek, Arrastra Creek & Alice Creek Fires

### IAP Overview Map

Date: 8/6/2017







DMH

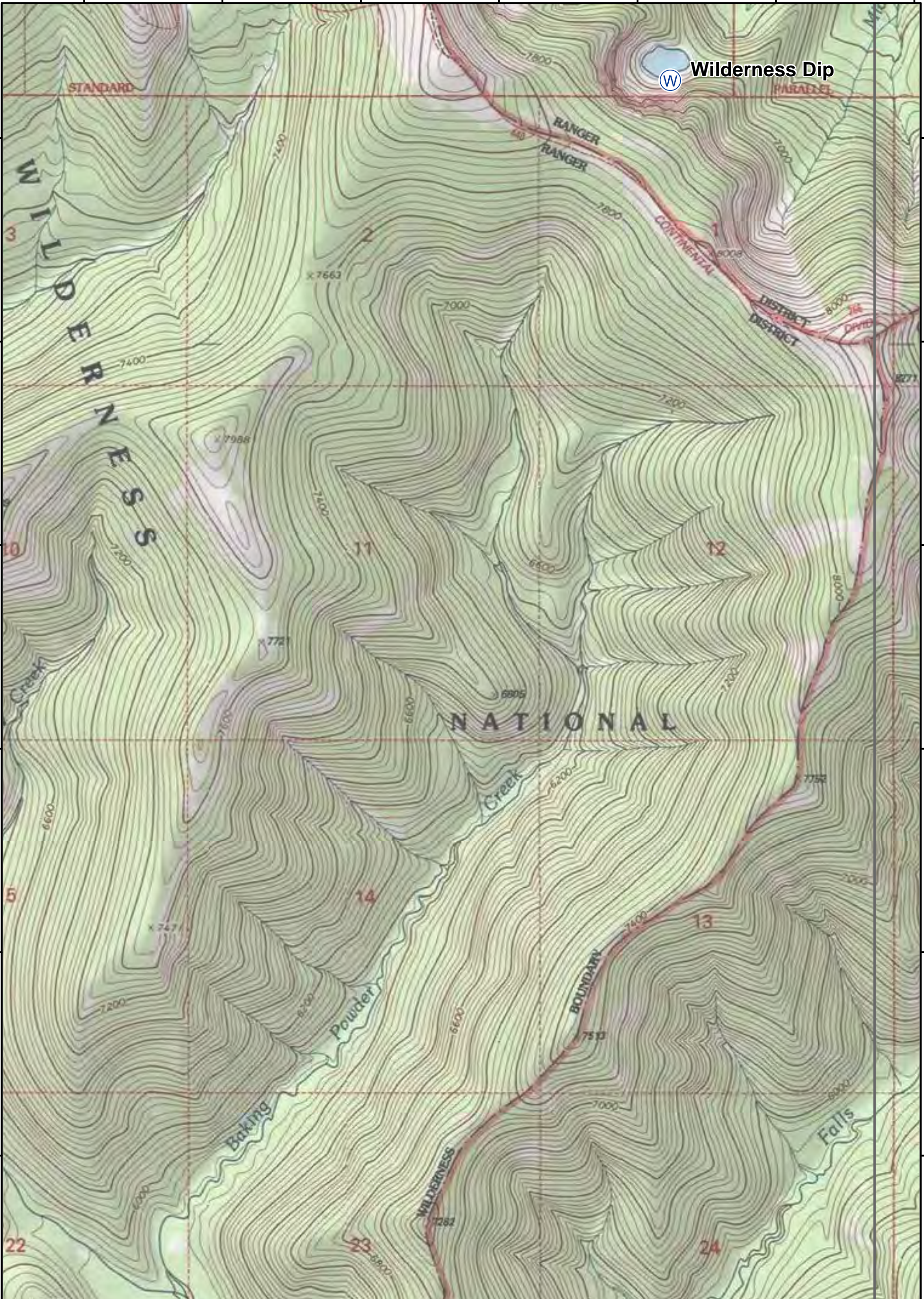
112°52'0"W 112°50'30"W 112°49'0"W 112°47'30"W 112°46'0"W 112°44'30"W 112°43'0"W 112°41'30"W 112°40'0"W 112°38'30"W 112°37'0"W 112°35'30"W 112°34'0"W 112°32'30"W 112°31'0"W 112°29'30"W 112°28'0"W 112°26'30"W 112°25'0"W

46°50'30"N 46°51'30"N 46°52'30"N 46°53'30"N 46°54'30"N 46°55'30"N 46°56'30"N 46°57'30"N 46°58'30"N 46°59'30"N 47°0'30"N 47°1'30"N 47°2'30"N 47°3'30"N 47°4'30"N 47°5'30"N 47°6'30"N 47°7'30"N 47°8'30"N 47°9'30"N 47°10'30"N 47°11'30"N 47°12'30"N 47°13'30"N 47°14'30"N 47°15'30"N 47°16'30"N 47°17'30"N 47°18'30"N

112°35'30"W 112°35'0"W 112°34'30"W 112°34'0"W 112°33'30"W 112°33'0"W 112°32'30"W

47°10'30"N  
47°10'0"N  
47°9'30"N  
47°9'0"N  
47°8'30"N  
47°8'0"N  
47°7'30"N

47°10'30"N  
47°10'0"N  
47°9'30"N  
47°9'0"N  
47°8'30"N  
47°8'0"N  
47°7'30"N



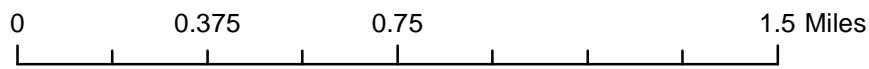
DMH



### Park Creek, Arrastra Creek & Alice Creek Fires

### IAP Map

08/07/2017



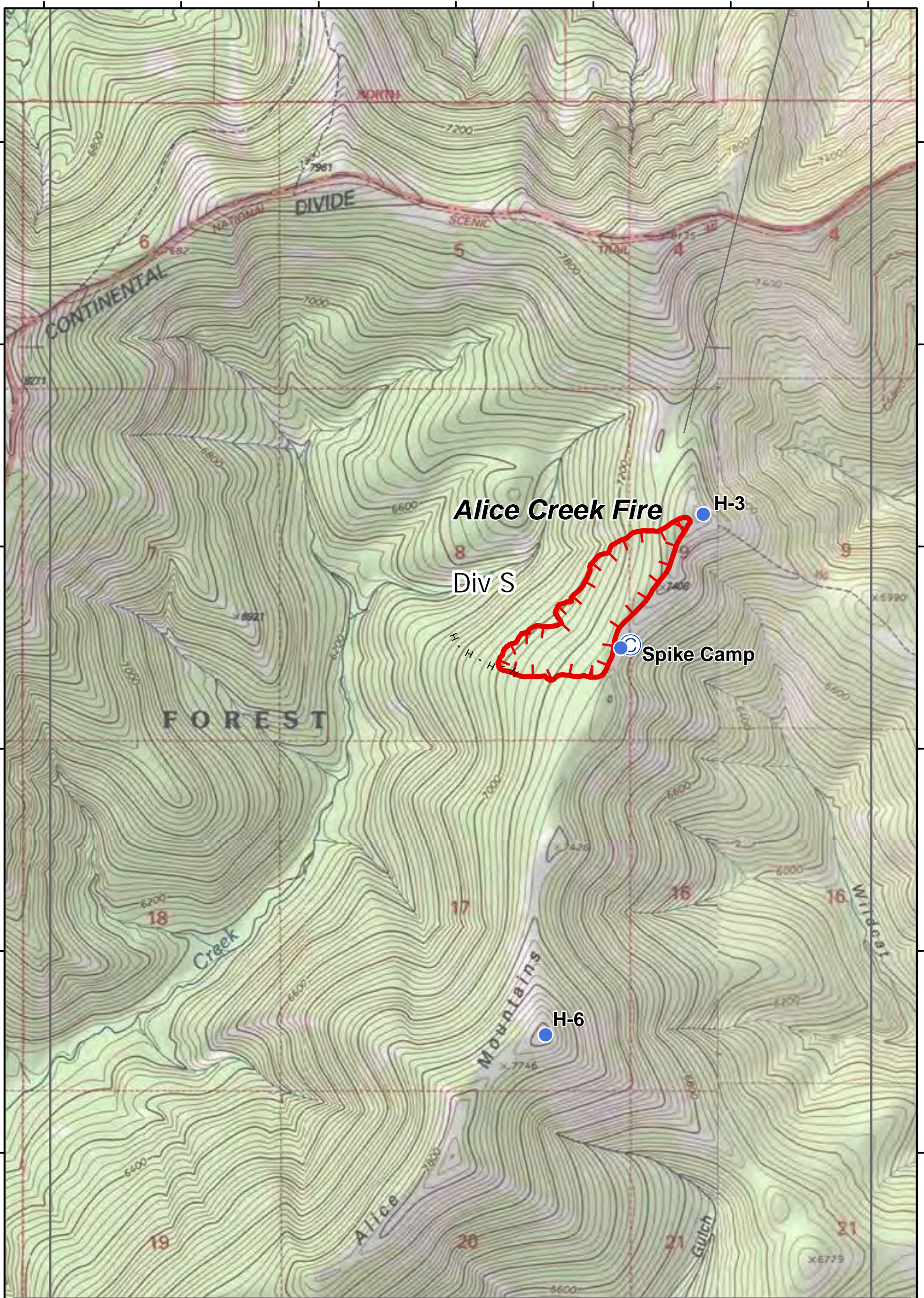
PAGE: **E7**

112°35'30"W 112°35'0"W 112°34'30"W 112°34'0"W 112°33'30"W 112°33'0"W 112°32'30"W

112°32'30"W 112°32'0"W 112°31'30"W 112°31'0"W 112°30'30"W 112°30'0"W 112°29'30"W

47°10'30"N  
47°10'0"N  
47°9'30"N  
47°9'0"N  
47°8'30"N  
47°8'0"N  
47°7'30"N

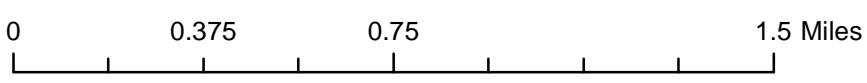
47°10'30"N  
47°10'0"N  
47°9'30"N  
47°9'0"N  
47°8'30"N  
47°8'0"N  
47°7'30"N



DMH

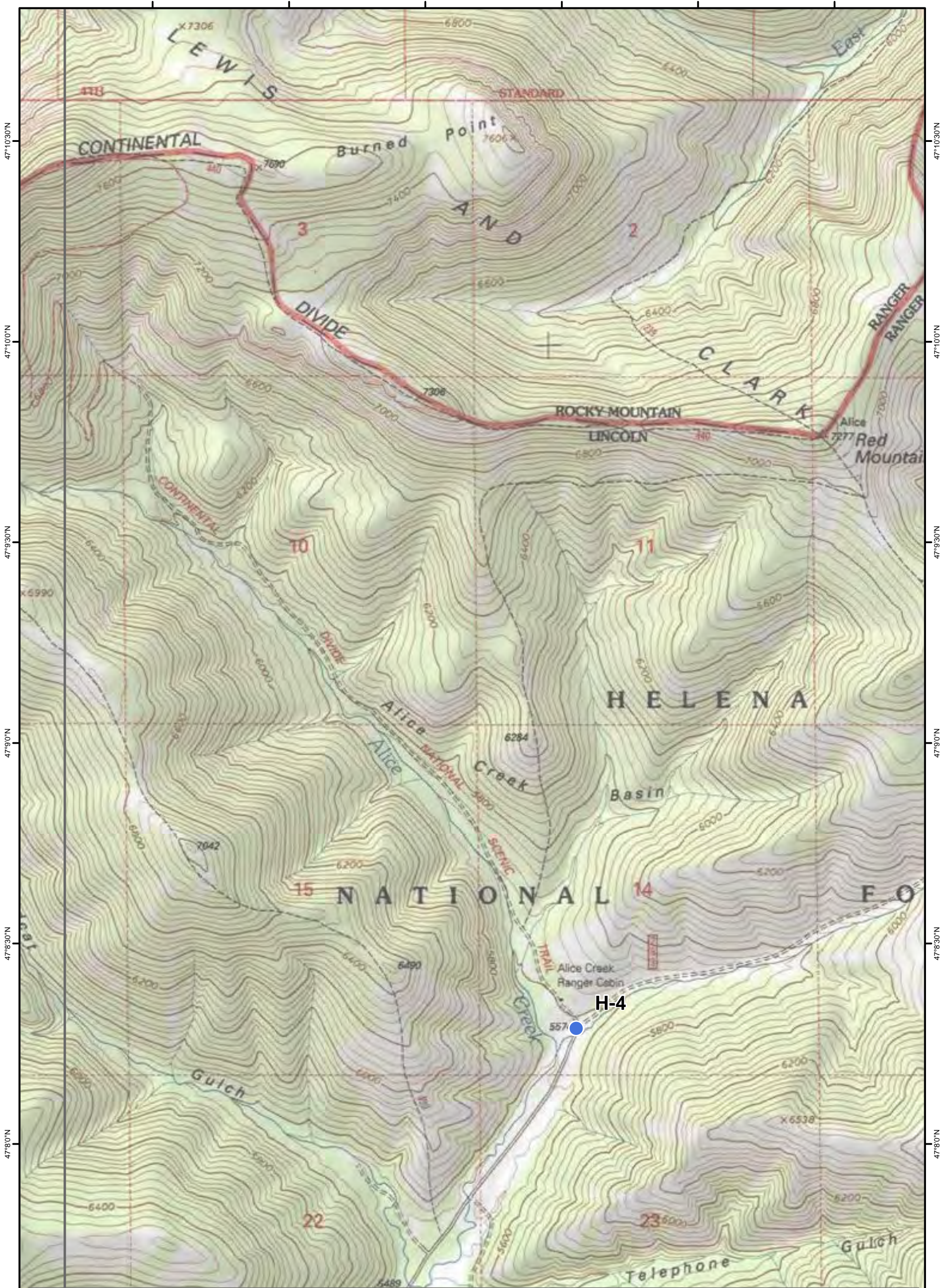


**Park Creek, Arrastra Creek & Alice Creek Fires**  
**IAP Map**  
 08/07/2017



PAGE: **E8**

112°32'30"W 112°32'0"W 112°31'30"W 112°31'0"W 112°30'30"W 112°30'0"W 112°29'30"W



47°10'30"N  
47°10'00"N  
47°9'30"N  
47°9'00"N  
47°8'30"N  
47°8'00"N  
47°7'30"N

47°10'30"N  
47°10'00"N  
47°9'30"N  
47°9'00"N  
47°8'30"N  
47°8'00"N  
47°7'30"N



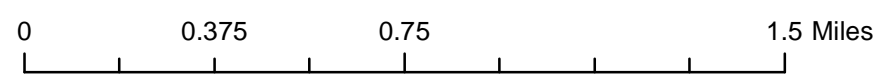
DMH



### Park Creek, Arrastra Creek & Alice Creek Fires

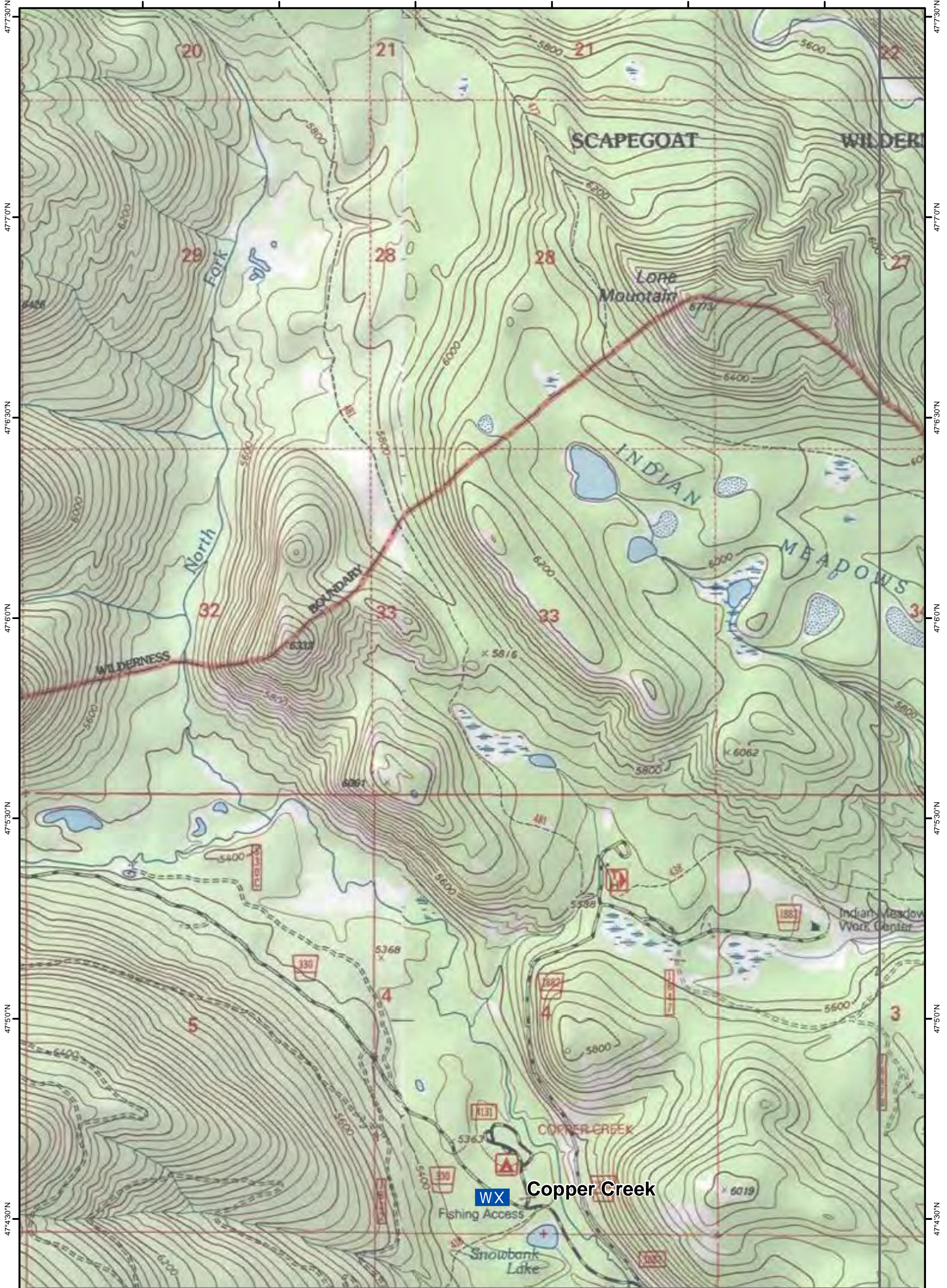
#### IAP Map

08/07/2017



PAGE: **E9**

112°38'30"W 112°38'0"W 112°37'30"W 112°37'0"W 112°36'30"W 112°36'0"W



47°43'0"N  
47°43'30"N  
47°45'0"N  
47°45'30"N  
47°50'0"N  
47°50'30"N  
47°53'0"N  
47°53'30"N  
47°56'0"N  
47°56'30"N  
47°57'0"N  
47°57'30"N

47°43'0"N  
47°43'30"N  
47°45'0"N  
47°45'30"N  
47°50'0"N  
47°50'30"N  
47°53'0"N  
47°53'30"N  
47°56'0"N  
47°56'30"N  
47°57'0"N  
47°57'30"N



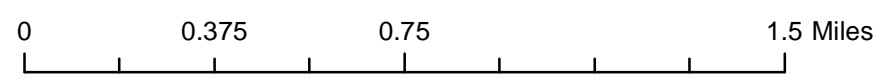
DMH



### Park Creek, Arrastra Creek & Alice Creek Fires

IAP Map

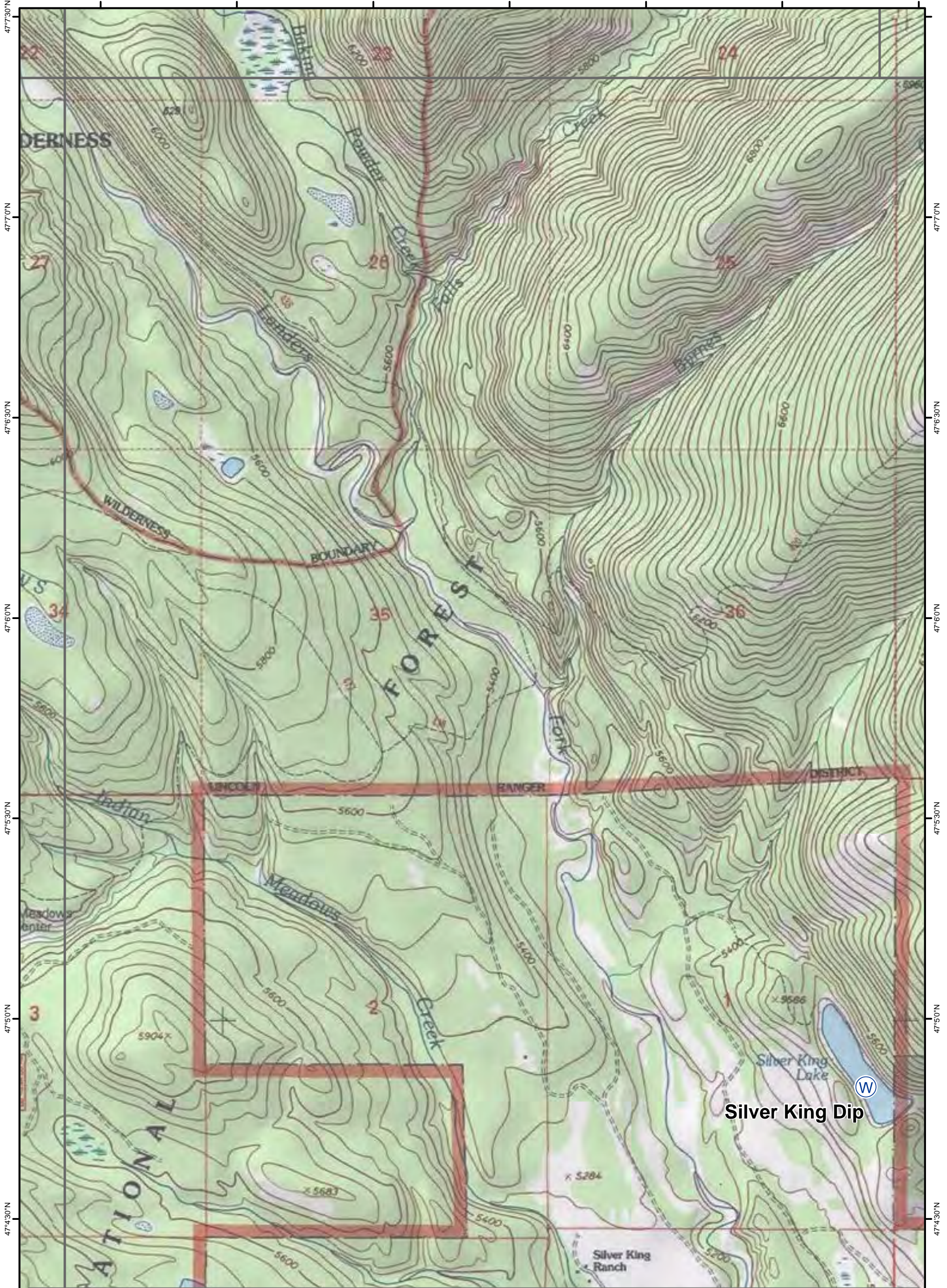
08/07/2017



PAGE: **F6**

112°38'30"W 112°38'0"W 112°37'30"W 112°37'0"W 112°36'30"W 112°36'0"W

112°35'30"W 112°35'0"W 112°34'30"W 112°34'0"W 112°33'30"W 112°33'0"W 112°32'30"W



47°43'0"N 47°45'0"N 47°50'0"N 47°53'0"N 47°60'0"N 47°63'0"N 47°70'0"N 47°73'0"N

47°43'0"N 47°50'0"N 47°53'0"N 47°60'0"N 47°63'0"N 47°70'0"N 47°73'0"N

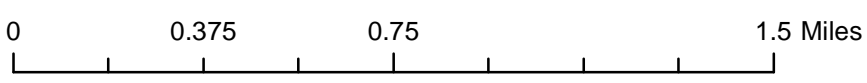


DMH



### Park Creek, Arrastra Creek & Alice Creek Fires IAP Map

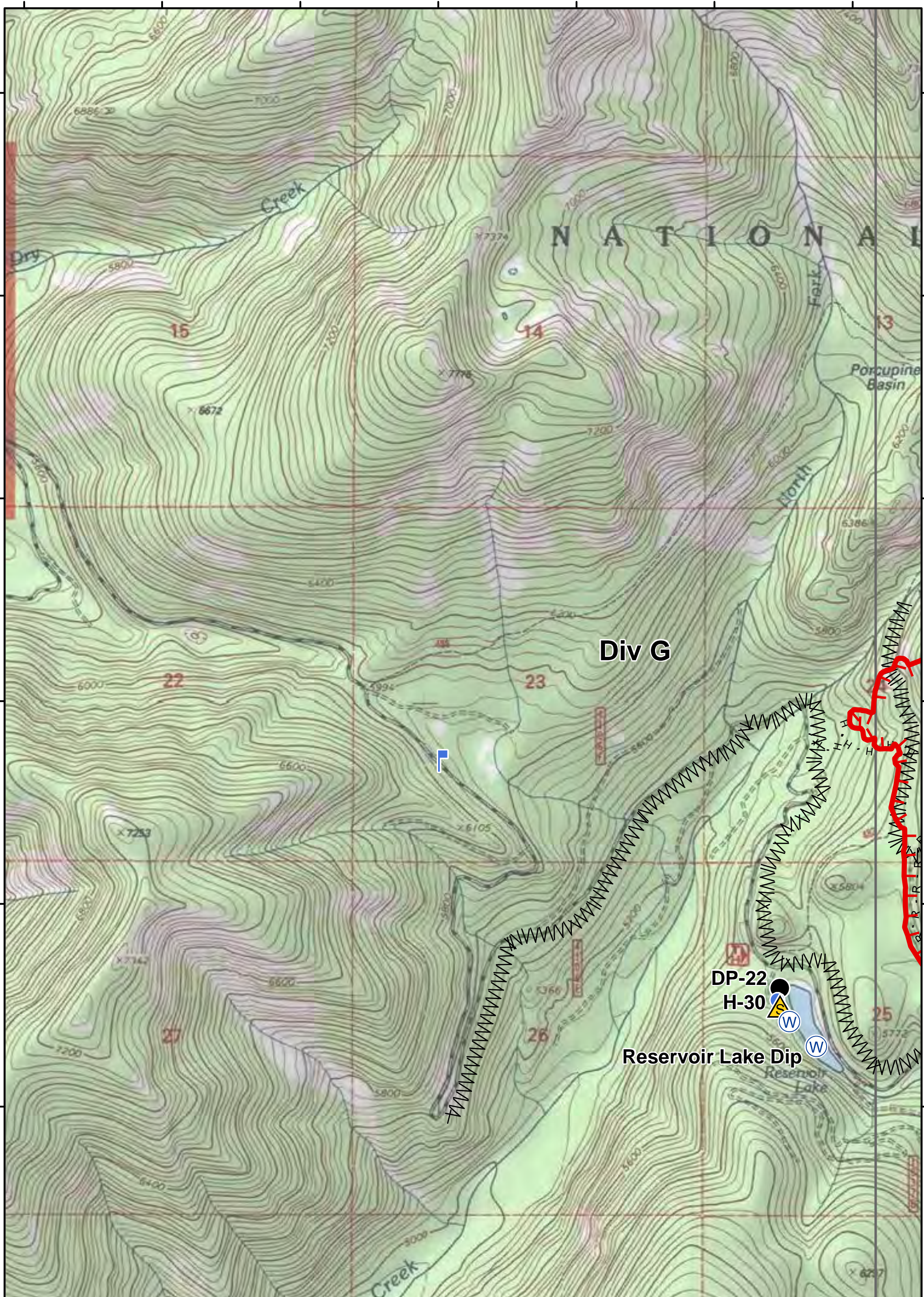
08/07/2017





PAGE: **F7**

112°35'30"W 112°35'0"W 112°34'30"W 112°34'0"W 112°33'30"W 112°33'0"W 112°32'30"W

112°51'30"W 112°51'0"W 112°50'30"W 112°50'0"W 112°49'30"W 112°49'0"W 112°48'30"W



**Park Creek, Arrastra Creek & Alice Creek Fires**  
**IAP Map**  
 08/07/2017

DMH   **PAGE: G2**

0 0.375 0.75 1.5 Miles

112°51'30"W 112°51'0"W 112°50'30"W 112°50'0"W 112°49'30"W 112°49'0"W 112°48'30"W

112°48'0"W

112°47'30"W

112°47'0"W

112°46'30"W

112°46'0"W

112°45'30"W

47°40'N

47°40'N

47°33'0"N

47°33'0"N

47°30'0"N

47°30'0"N

47°23'0"N

47°23'0"N

47°20'0"N

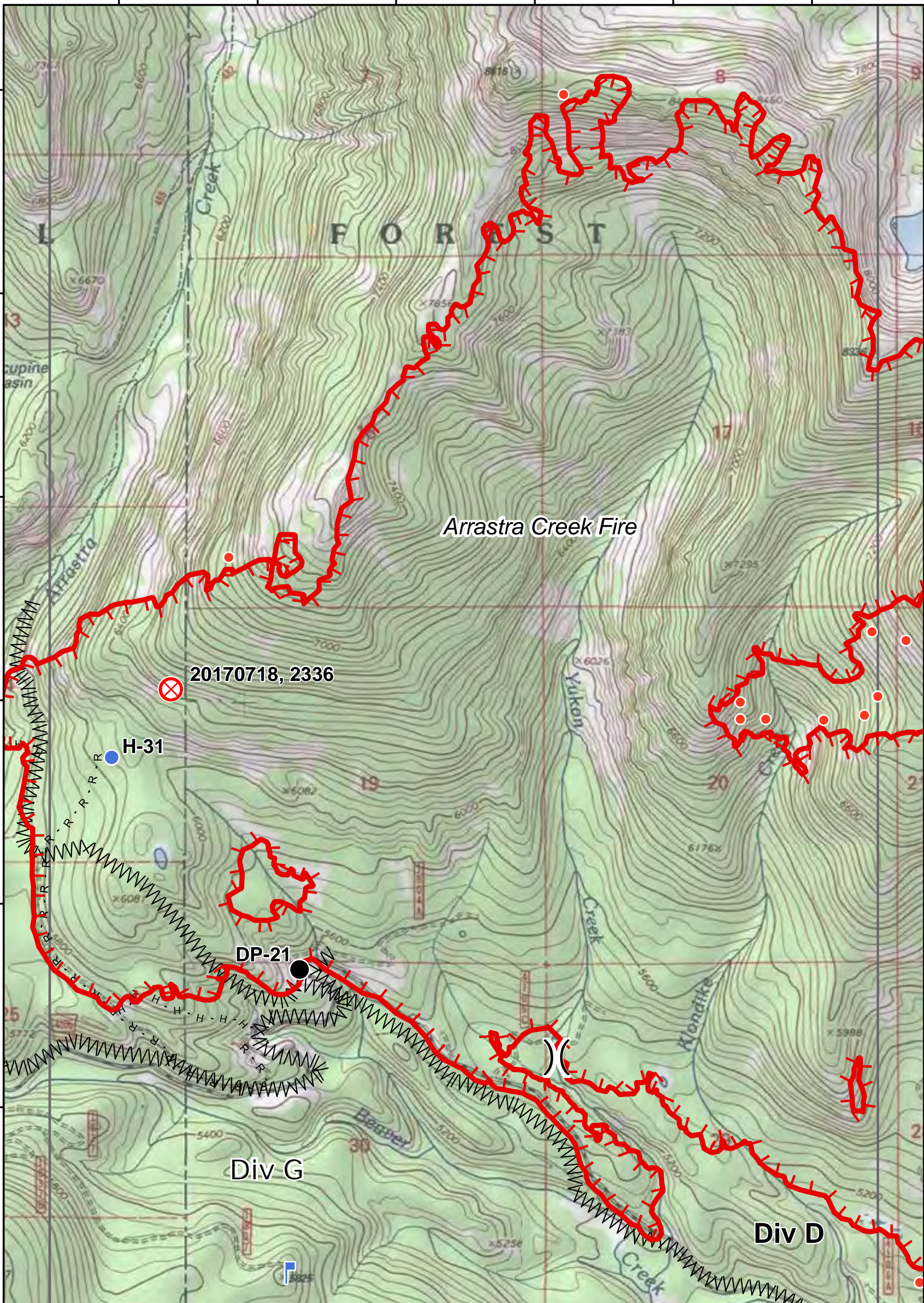
47°20'0"N

47°13'0"N

47°13'0"N

47°10'0"N

47°10'0"N



Arrastra Creek Fire

20170718, 2336

H-31

DP-21

Div G

Div D



**Park Creek, Arrastra Creek & Alice Creek Fires**  
 IAP Map  
 08/07/2017



DMH

0 0.375 0.75 1.5 Miles

PAGE: **G3**

112°48'0"W

112°47'30"W

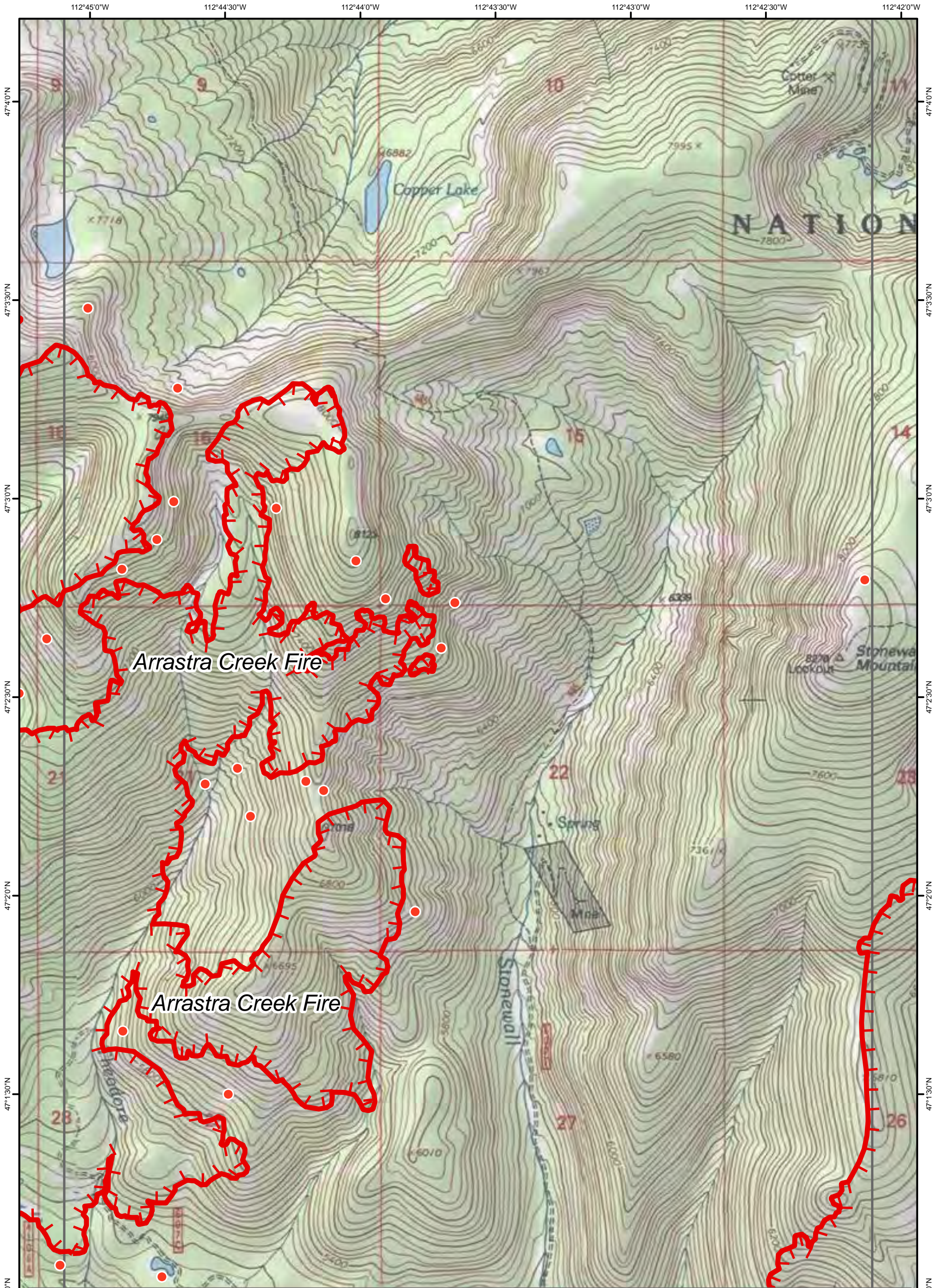
112°47'0"W

112°46'30"W

112°46'0"W

112°45'30"W





Arrastra Creek Fire

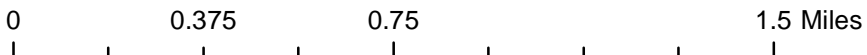
Arrastra Creek Fire

### Park Creek, Arrastra Creek & Alice Creek Fires

IAP Map  
08/07/2017



DMH

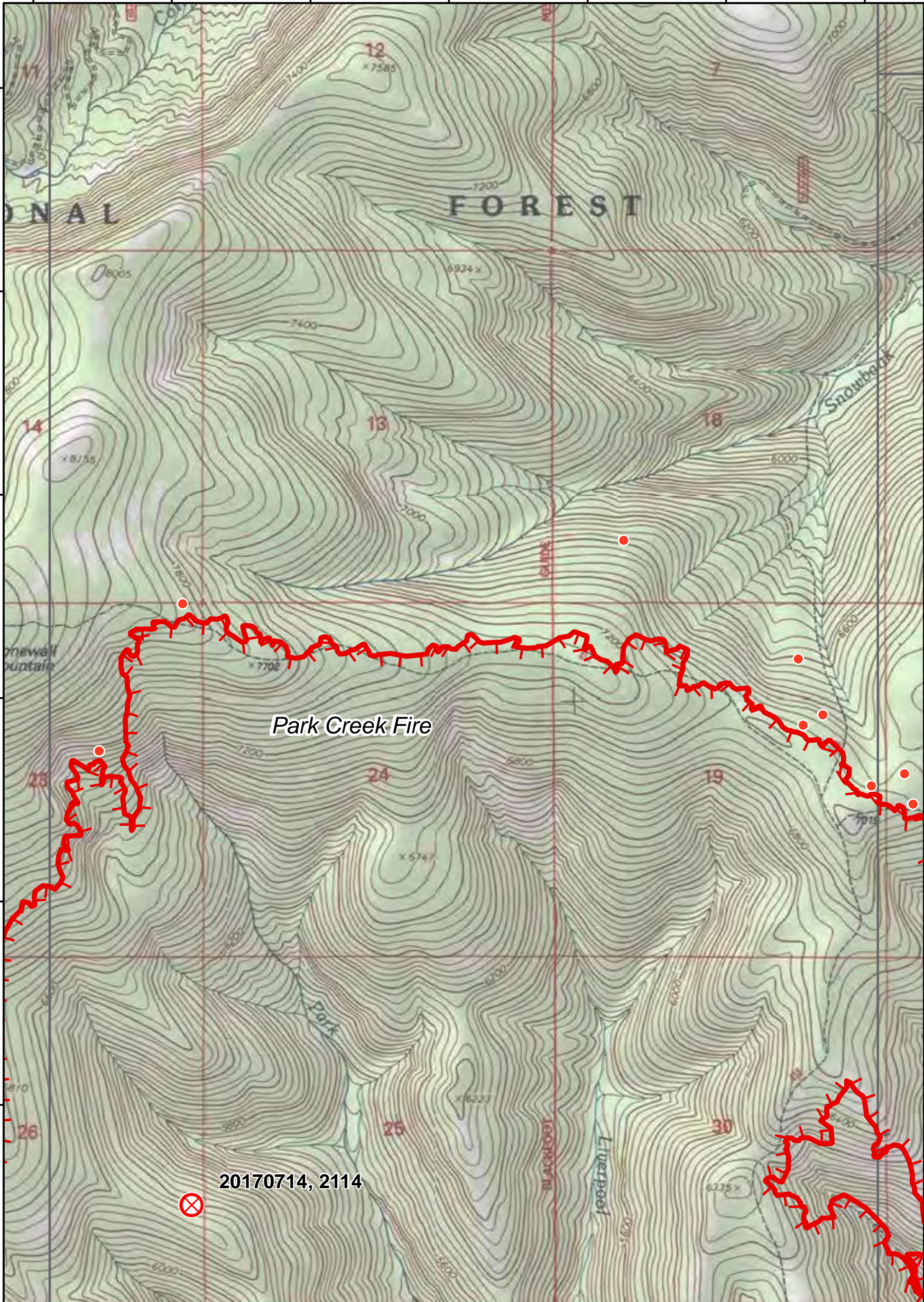


PAGE: **G4**

112°42'0"W 112°41'30"W 112°41'0"W 112°40'30"W 112°40'0"W 112°39'30"W 112°39'0"W

47°40'N  
47°30'N  
47°30'N  
47°20'N  
47°13'N  
47°10'N

47°40'N  
47°30'N  
47°30'N  
47°20'N  
47°13'N  
47°10'N



Park Creek Fire

20170714, 2114

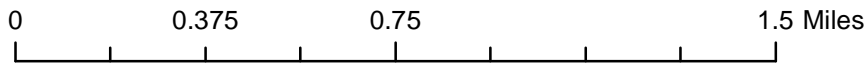


DMH



### Park Creek, Arrastra Creek & Alice Creek Fires

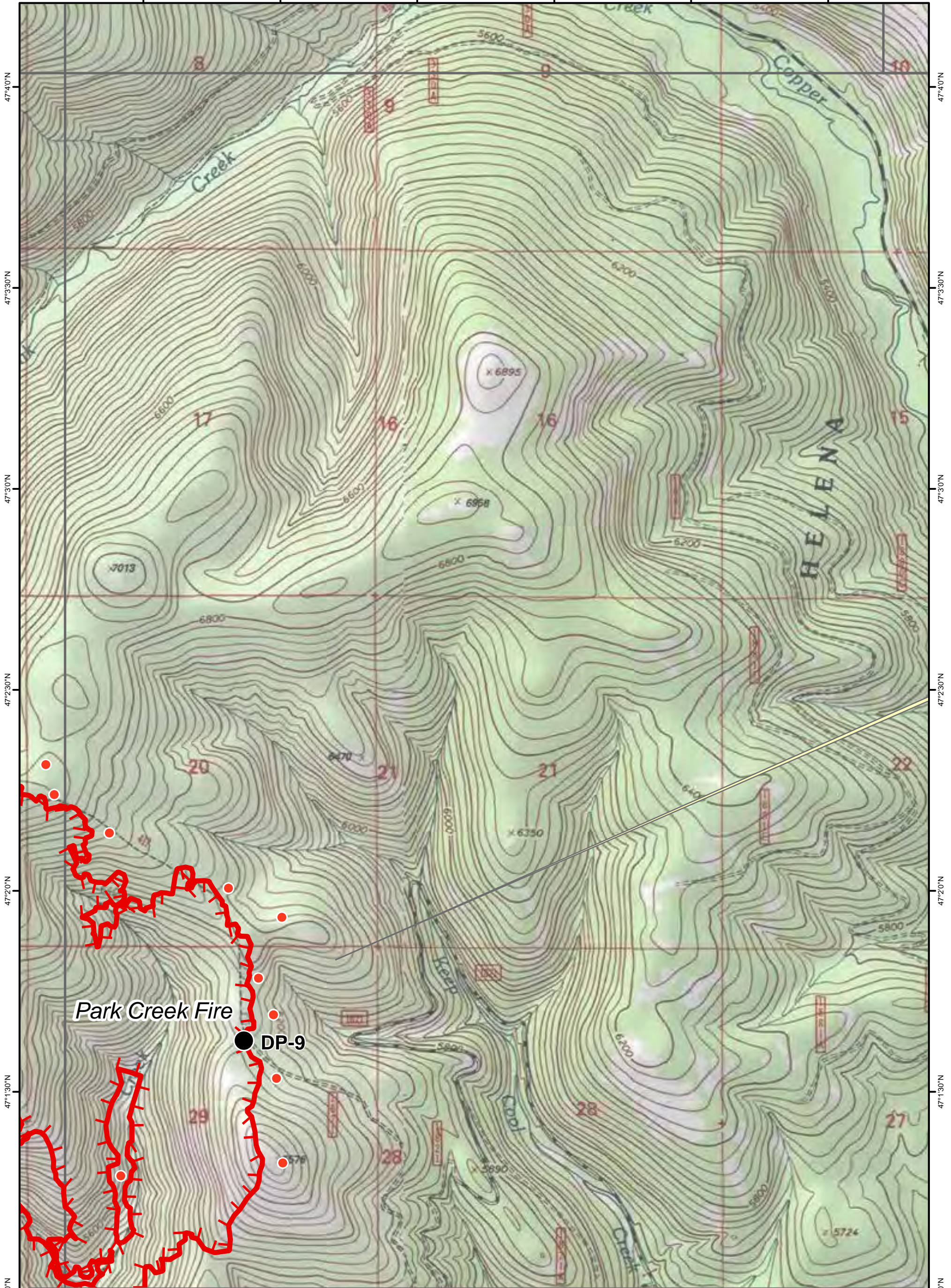
IAP Map  
08/07/2017



PAGE: **G5**

112°42'0"W 112°41'30"W 112°41'0"W 112°40'30"W 112°40'0"W 112°39'30"W 112°39'0"W

112°38'30"W 112°38'0"W 112°37'30"W 112°37'0"W 112°36'30"W 112°36'0"W



Park Creek Fire

DP-9



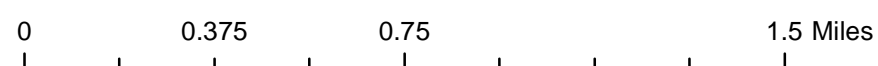
### Park Creek, Arrastra Creek & Alice Creek Fires

#### IAP Map

08/07/2017



DMH



PAGE: **G6**

112°38'30"W 112°38'0"W 112°37'30"W 112°37'0"W 112°36'30"W 112°36'0"W

112°48'0"W

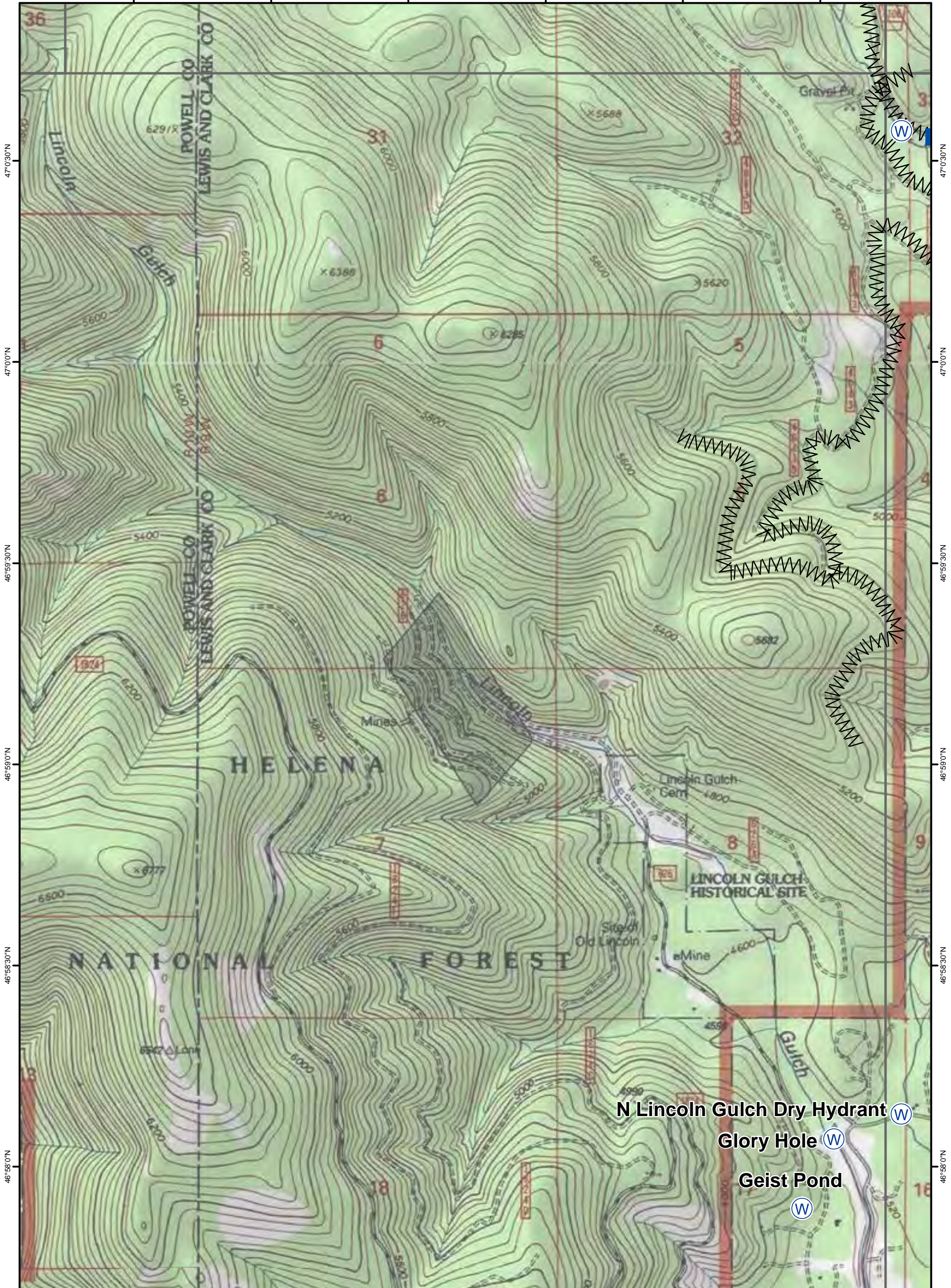
112°47'30"W

112°47'0"W

112°46'30"W

112°46'0"W

112°45'30"W



47°0'30"N  
47°0'0"N  
46°59'30"N  
46°59'0"N  
46°58'30"N  
46°58'0"N  
46°57'30"N

47°0'30"N  
47°0'0"N  
46°59'30"N  
46°59'0"N  
46°58'30"N  
46°58'0"N  
46°57'30"N

N Lincoln Gulch Dry Hydrant (W)

Glory Hole (W)

Geist Pond (W)

### Park Creek, Arrastra Creek & Alice Creek Fires

#### IAP Map

08/07/2017



DMH



0 0.375 0.75 1.5 Miles



PAGE: **H3**

112°48'0"W

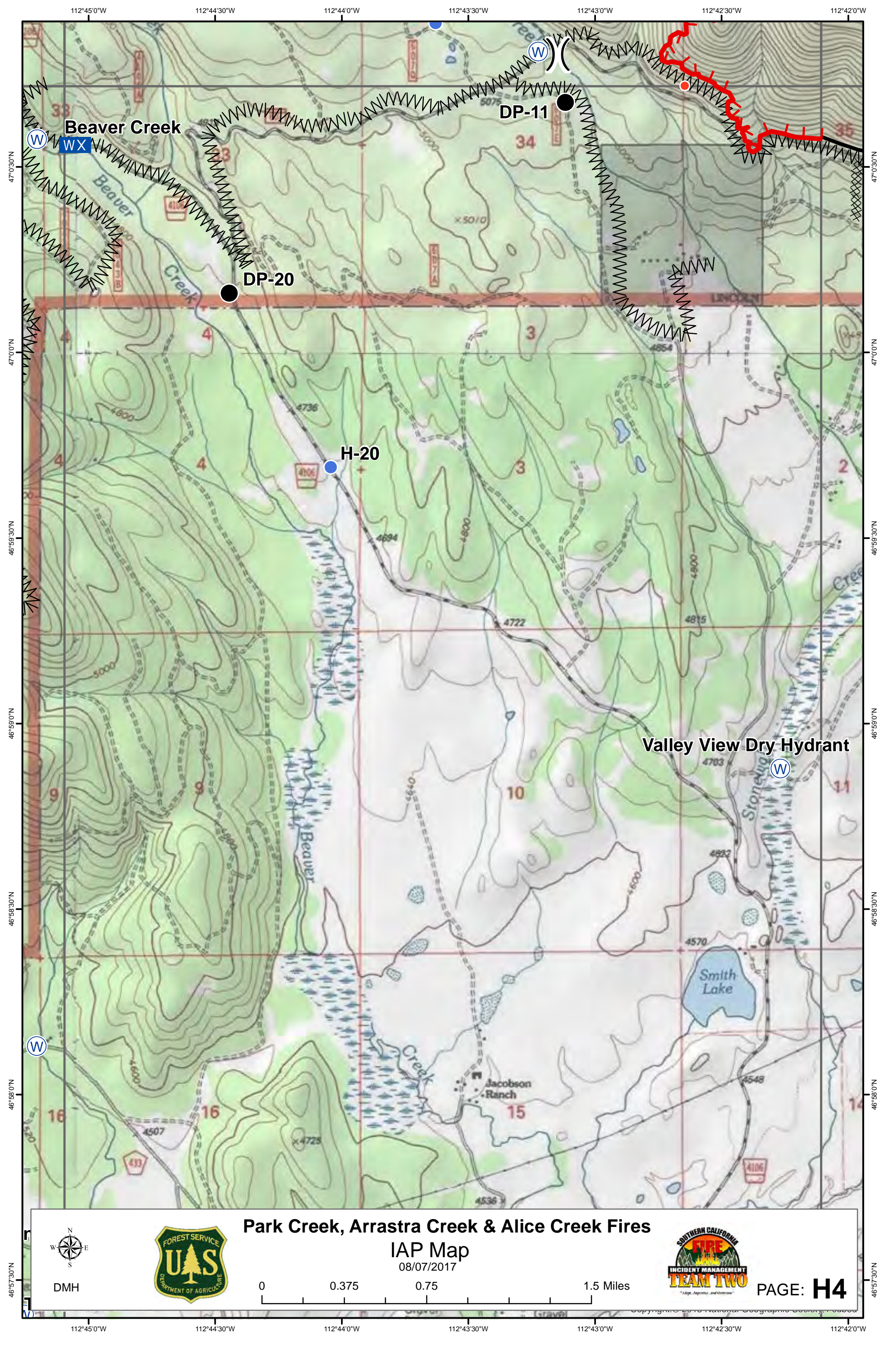
112°47'30"W

112°47'0"W

112°46'30"W

112°46'0"W

112°45'30"W



Beaver Creek

DP-11

DP-20

H-20

Valley View Dry Hydrant

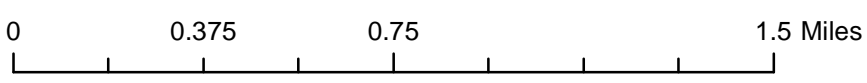
Smith Lake

Jacobson Ranch

### Park Creek, Arrastra Creek & Alice Creek Fires

#### IAP Map

08/07/2017

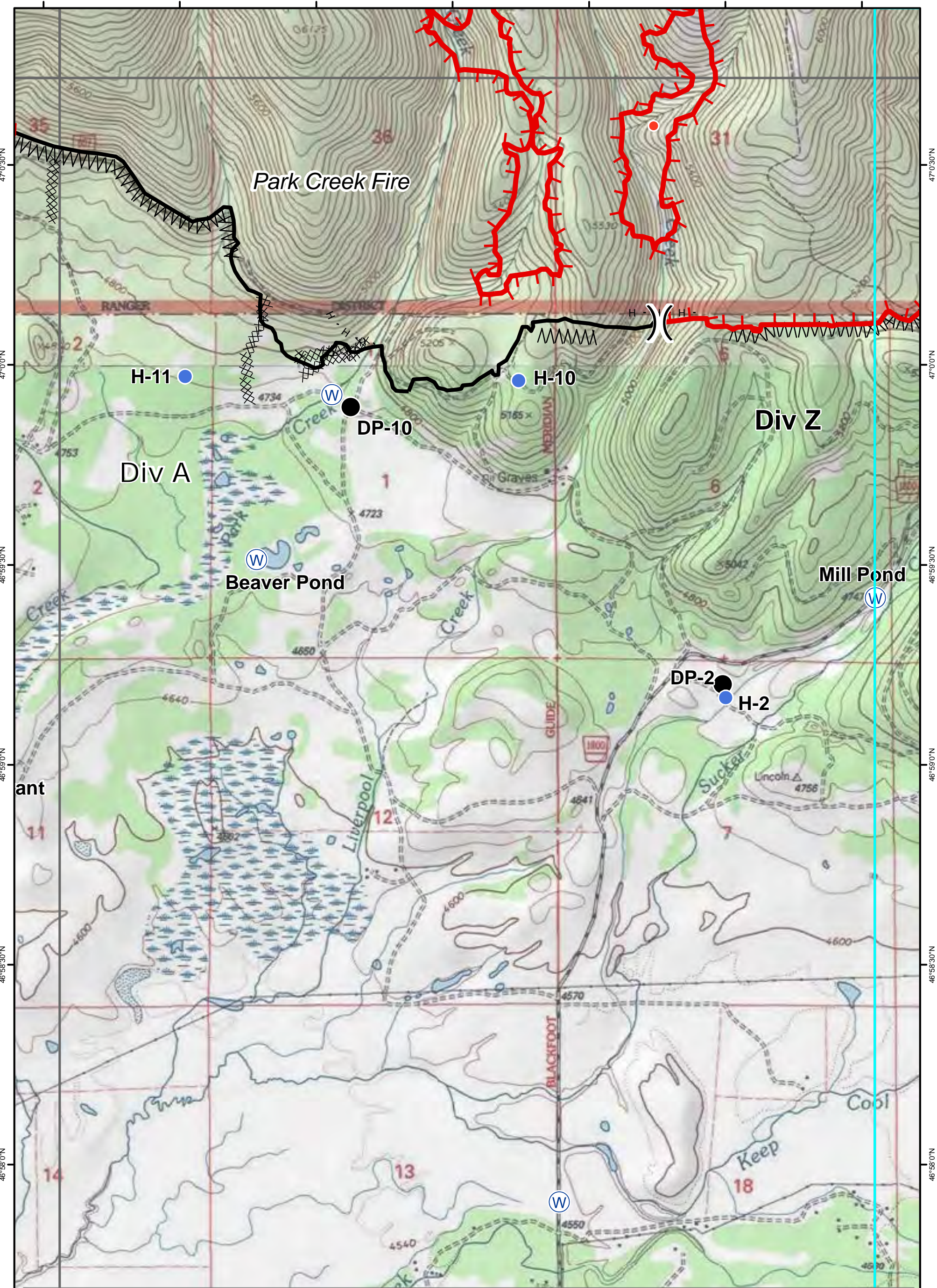


PAGE: **H4**



DMH

112°45'0"W 112°44'30"W 112°44'0"W 112°43'30"W 112°43'0"W 112°42'30"W 112°42'0"W  
47°0'30"N 47°0'0"N 46°59'30"N 46°59'0"N 46°58'30"N 46°58'0"N 46°57'30"N

112°42'0"W 112°41'30"W 112°41'0"W 112°40'30"W 112°40'0"W 112°39'30"W 112°39'0"W



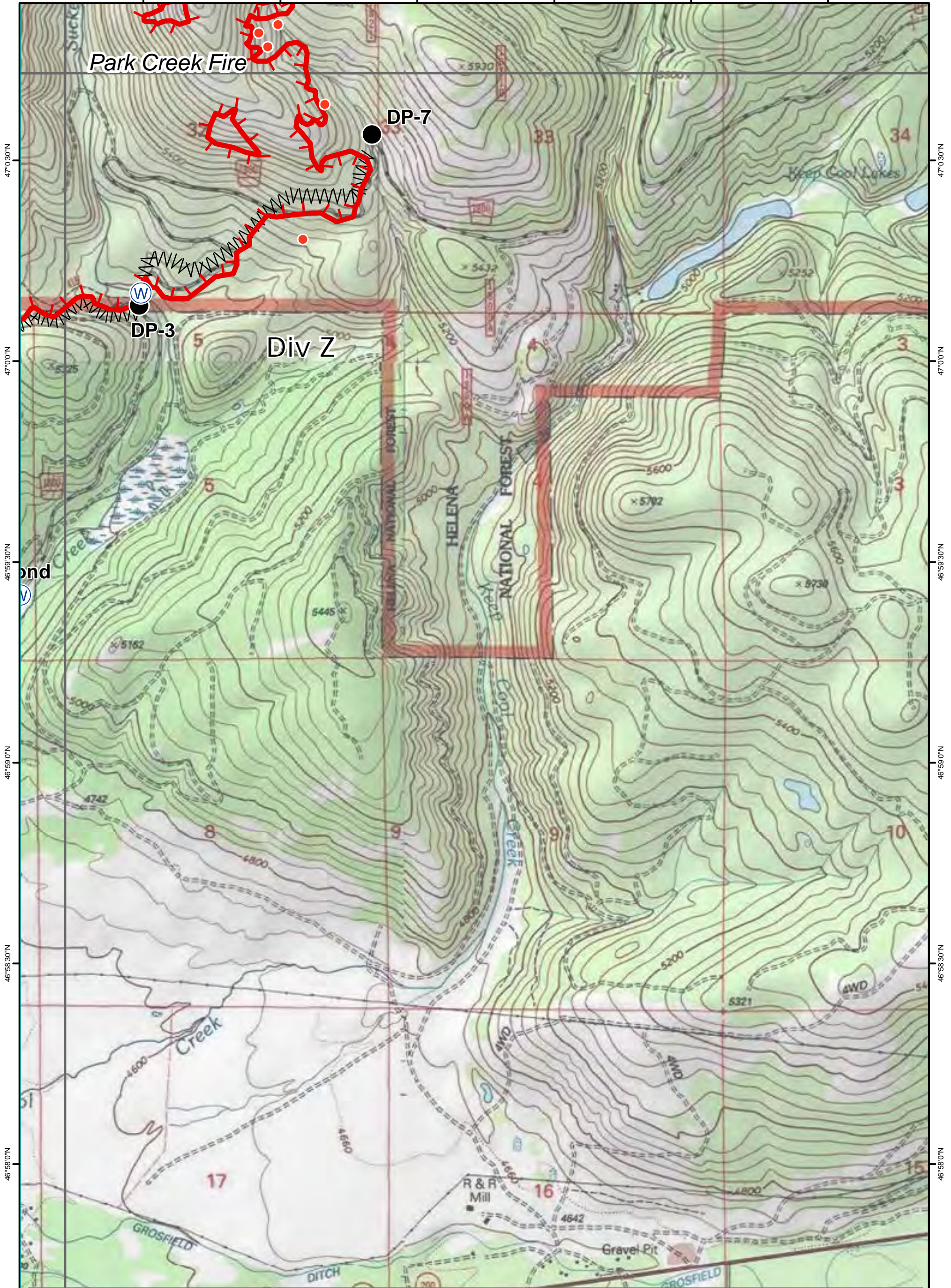
**Park Creek, Arrastra Creek & Alice Creek Fires**  
**IAP Map**  
 08/07/2017

DMH   **PAGE: H5**

0 0.375 0.75 1.5 Miles

112°42'0"W 112°41'30"W 112°41'0"W 112°40'30"W 112°40'0"W 112°39'30"W 112°39'0"W

112°38'30"W 112°38'0"W 112°37'30"W 112°37'0"W 112°36'30"W 112°36'0"W



47°0'30"N  
47°0'0"N  
46°59'30"N  
46°59'0"N  
46°58'30"N  
46°58'0"N  
46°57'30"N

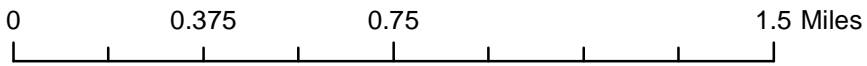
47°0'30"N  
47°0'0"N  
46°59'30"N  
46°59'0"N  
46°58'30"N  
46°58'0"N  
46°57'30"N



DMH



**Park Creek, Arrastra Creek & Alice Creek Fires**  
**IAP Map**  
 08/07/2017



PAGE: **H6**

112°38'30"W 112°38'0"W 112°37'30"W 112°37'0"W 112°36'30"W 112°36'0"W