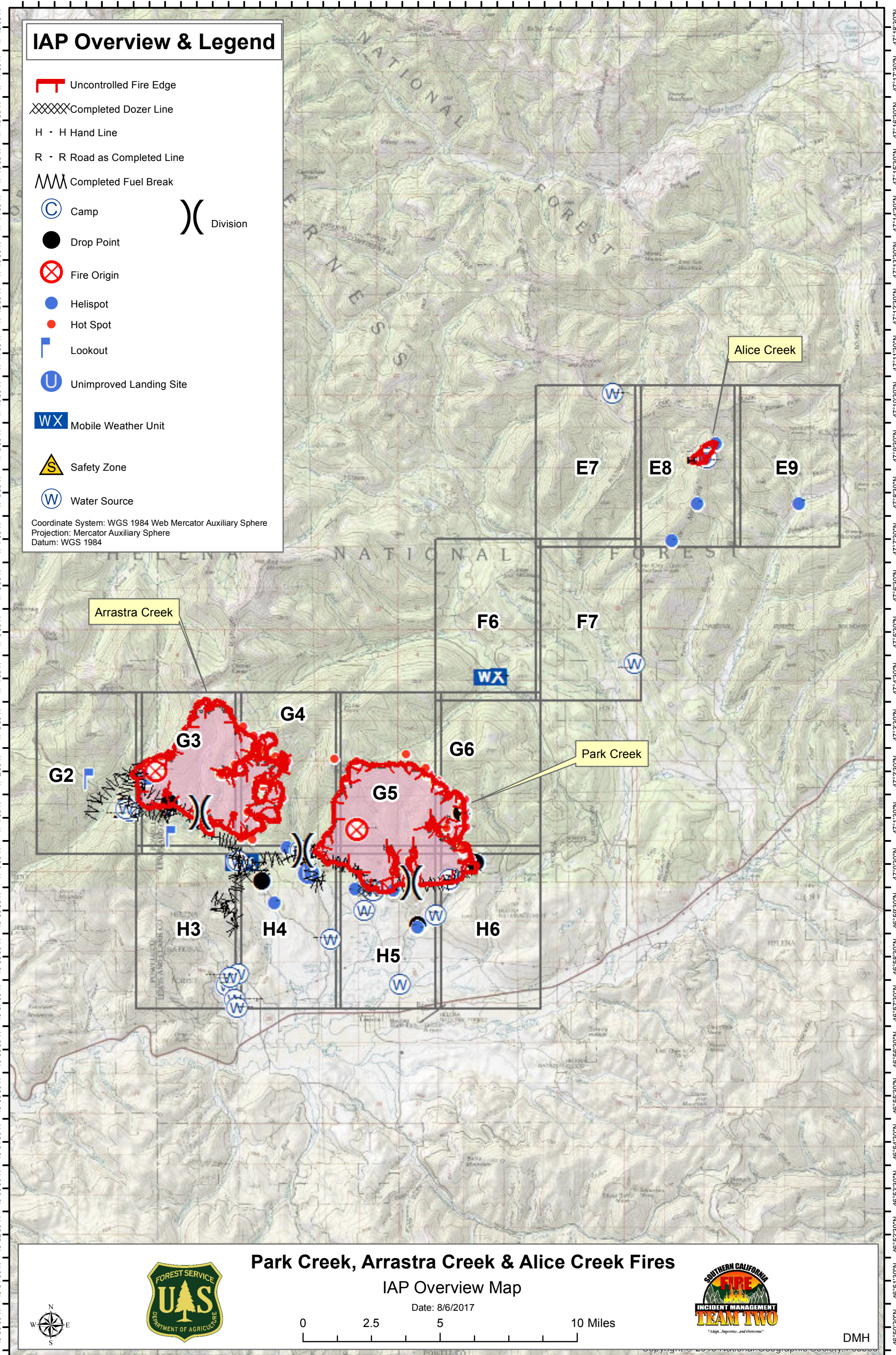


112°52'0"W 112°50'30"W 112°49'0"W 112°47'30"W 112°46'0"W 112°44'30"W 112°43'0"W 112°41'30"W 112°40'0"W 112°38'30"W 112°37'0"W 112°35'30"W 112°34'0"W 112°32'30"W 112°31'0"W 112°29'30"W 112°28'0"W 112°26'30"W 112°25'0"W



IAP Overview & Legend

- Uncontrolled Fire Edge
- Completed Dozer Line
- H - H Hand Line
- R - R Road as Completed Line
- Completed Fuel Break
- Camp
- Drop Point
- Fire Origin
- Helispot
- Hot Spot
- Lookout
- Unimproved Landing Site
- Mobile Weather Unit
- Safety Zone
- Water Source
- Division

Coordinate System: WGS 1984 Web Mercator Auxiliary Sphere
Projection: Mercator Auxiliary Sphere
Datum: WGS 1984

Arrastra Creek

Alice Creek

Park Creek

Park Creek, Arrastra Creek & Alice Creek Fires

IAP Overview Map

Date: 8/6/2017

0 2.5 5 10 Miles



DMH

112°52'0"W 112°50'30"W 112°49'0"W 112°47'30"W 112°46'0"W 112°44'30"W 112°43'0"W 112°41'30"W 112°40'0"W 112°38'30"W 112°37'0"W 112°35'30"W 112°34'0"W 112°32'30"W 112°31'0"W 112°29'30"W 112°28'0"W 112°26'30"W 112°25'0"W