

Park Creek, Arrastra Creek Alice Creek Fires

AirOps Map

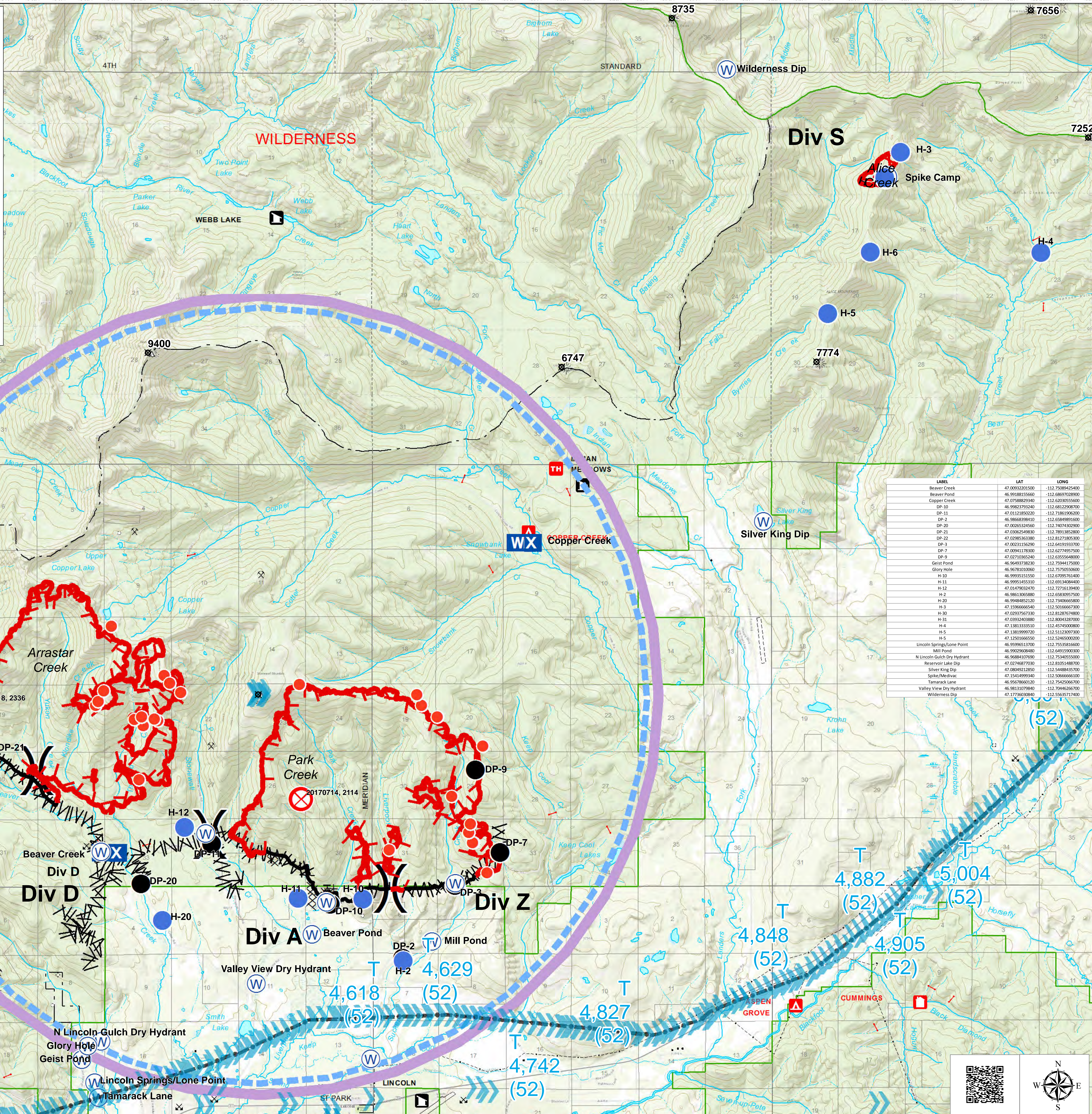
8 Aug 2017

--- Uncontrolled Fire Edge
 Completed Dozer Line
 Hand Line
 Road as Completed Line
 MWWW Completed Fuel Break
 Transmission Lines
 TFR

● Helispot
● Drop Point
 Unimproved Landing Site
W Water Source
WX Mobile Weather Unit
C Camp
⊗ Fire Origin
● Hot Spot

Division
 Lookout

0 0.25 0.5 0.75 1.0 1.5 2.0 2.5 3.0 Miles
 DMH 8/7/2017 Contour Interval 200 Feet



LABEL	LAT	LONG
Beaver Creek	47.0932201500	-112.7508942500
Beaver Pond	46.9918815560	-112.6869702800
Copper Creek	47.0758829340	-112.6203555600
DP-10	46.9982379320	-112.6812290870
DP-11	47.0112185020	-112.7186190620
DP-2	46.9868398410	-112.6584891600
DP-20	47.0206533450	-112.6270320900
DP-21	47.0306254980	-112.7891382800
DP-22	47.0298536380	-112.8127180530
DP-3	47.0023115620	-112.6419193700
DP-7	47.0094117830	-112.6277495750
DP-9	47.0271036240	-112.6355468200
Geist Pond	46.9649373820	-112.7594417500
Glory Hole	46.9678101060	-112.7575550600
H-10	46.9993515150	-112.6709276100
H-11	46.9995145310	-112.6913619400
H-12	47.0147023470	-112.7216339400
H-2	46.9863306580	-112.6583095750
H-20	46.9948482120	-112.7340666800
H-3	47.1596666540	-112.5016666700
H-30	47.0293756730	-112.8128767480
H-31	47.0393240380	-112.8043287000
H-4	47.1381333350	-112.4574500800
H-5	47.1381999720	-112.5112309700
H-5	47.1291666550	-112.5246000200
Lincoln Springs/Lone Point	46.9996931700	-112.7553818600
Mill Pond	46.9923698480	-112.6491550000
N Lincoln Gulch Dry Hydrant	46.9684107690	-112.7534055500
Reservoir Lake Dip	47.0274887030	-112.8105148870
Silver King Dip	47.08049212850	-112.54488493700
Silver Meadow	47.15414999340	-112.52666666000
Tamarack Lane	46.95628660120	-112.75425066700
Valley View Dry Hydrant	46.98131079840	-112.70446266700
Wilderness Dip	47.17736030840	-112.5563717400