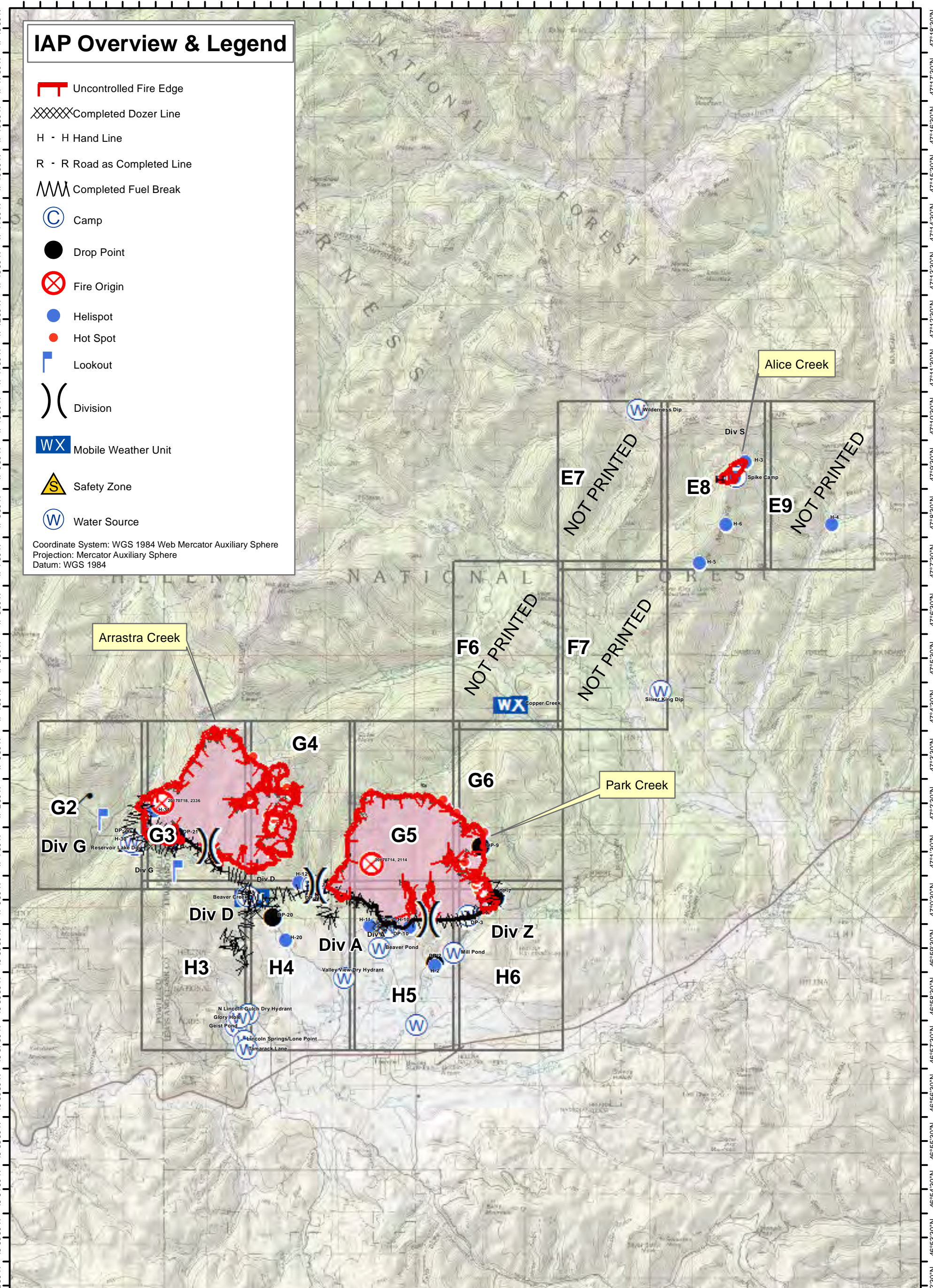


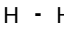
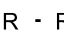






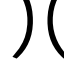



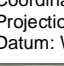


112°52'0"W 112°50'30"W 112°49'0"W 112°47'30"W 112°46'0"W 112°44'30"W 112°43'0"W 112°41'30"W 112°40'0"W 112°38'30"W 112°37'0"W 112°35'30"W 112°34'0"W 112°32'30"W 112°31'0"W 112°29'30"W 112°28'0"W 112°26'30"W 112°25'0"W



IAP Overview & Legend


-  Uncontrolled Fire Edge
-  Completed Dozer Line
-  H - H Hand Line
-  R - R Road as Completed Line
-  Completed Fuel Break
-  Camp
-  Drop Point
-  Fire Origin
-  Helispot
-  Hot Spot
-  Lookout
-  Division
-  Mobile Weather Unit
-  Safety Zone
-  Water Source


Coordinate System: WGS 1984 Web Mercator Auxiliary Sphere
Projection: Mercator Auxiliary Sphere
Datum: WGS 1984

Arrastra Creek

Alice Creek

Park Creek



DMH





Park Creek, Arrastra Creek & Alice Creek Fires

IAP Overview Map

8/08/17





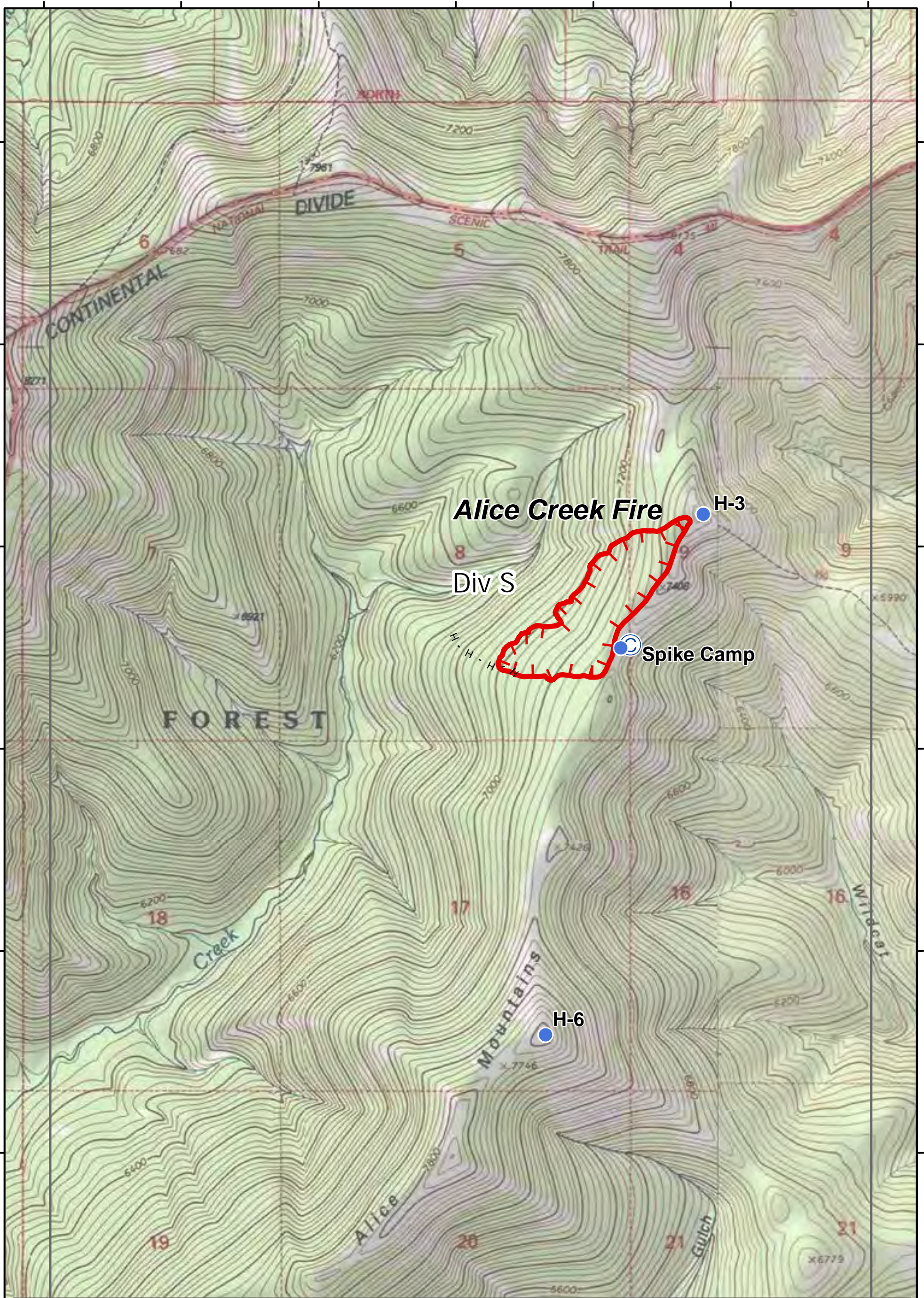


112°52'0"W 112°50'30"W 112°49'0"W 112°47'30"W 112°46'0"W 112°44'30"W 112°43'0"W 112°41'30"W 112°40'0"W 112°38'30"W 112°37'0"W 112°35'30"W 112°34'0"W 112°32'30"W 112°31'0"W 112°29'30"W 112°28'0"W 112°26'30"W 112°25'0"W

112°32'30"W 112°32'0"W 112°31'30"W 112°31'0"W 112°30'30"W 112°30'0"W 112°29'30"W

47°10'30"N
47°10'0"N
47°9'30"N
47°9'0"N
47°8'30"N
47°8'0"N
47°7'30"N

47°10'30"N
47°10'0"N
47°9'30"N
47°9'0"N
47°8'30"N
47°8'0"N
47°7'30"N



Alice Creek Fire

H-3

Div S

Spike Camp

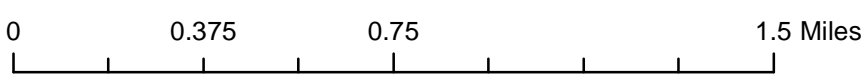
H-6



Park Creek, Arrastra Creek & Alice Creek Fires
IAP Map
08/08/2017



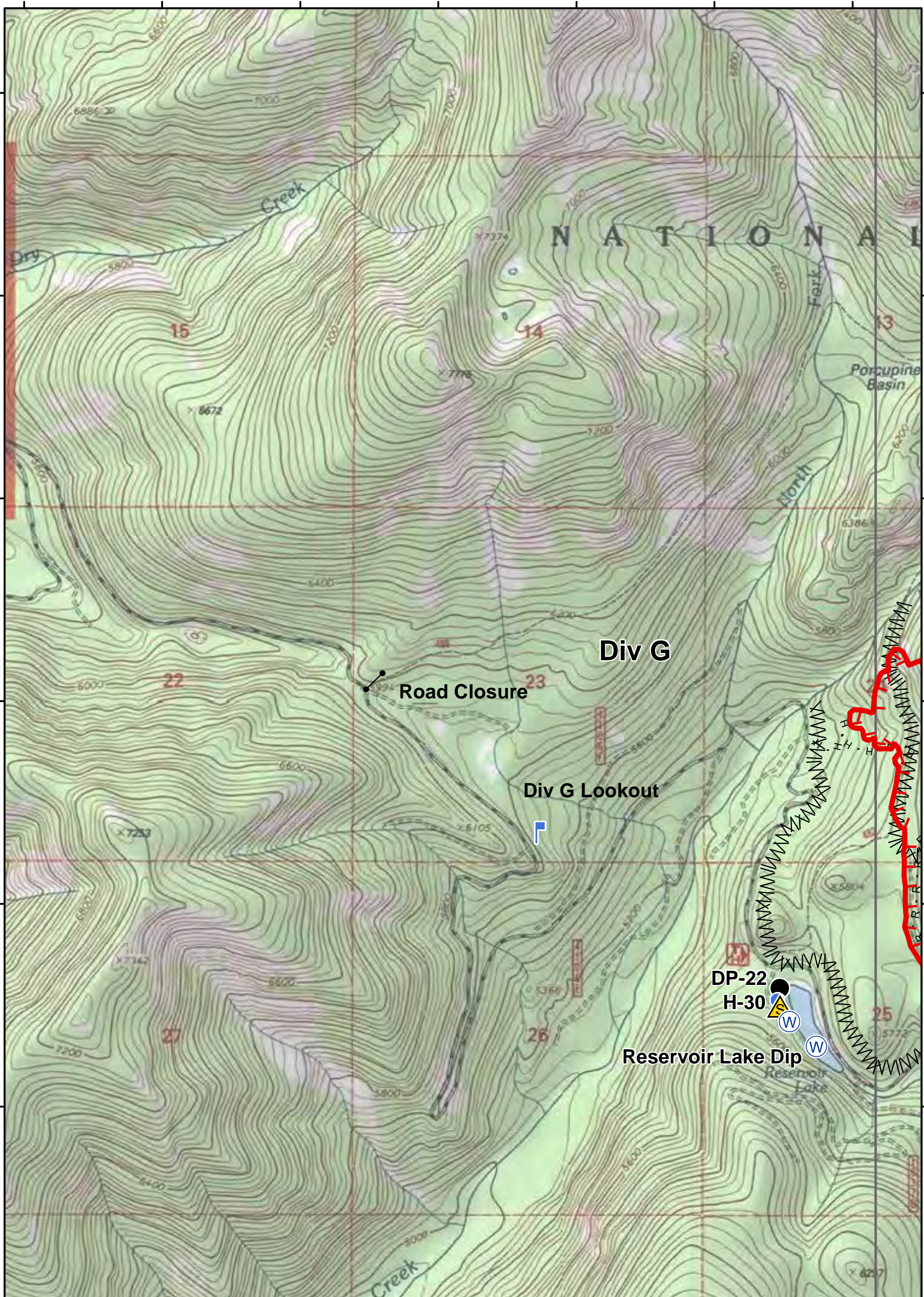
DMH



PAGE: **E8**

112°32'30"W 112°32'0"W 112°31'30"W 112°31'0"W 112°30'30"W 112°30'0"W 112°29'30"W

112°51'30"W 112°51'0"W 112°50'30"W 112°50'0"W 112°49'30"W 112°49'0"W 112°48'30"W



Park Creek, Arrastra Creek & Alice Creek Fires
IAP Map
 08/08/2017

DMH

0 0.375 0.75 1.5 Miles

PAGE: G2

112°51'30"W 112°51'0"W 112°50'30"W 112°50'0"W 112°49'30"W 112°49'0"W 112°48'30"W

47°40'N
47°30'N
47°30'N
47°23'N
47°20'N
47°13'N
47°10'N

47°40'N
47°30'N
47°30'N
47°23'N
47°20'N
47°13'N
47°10'N

112°48'0"W

112°47'30"W

112°47'0"W

112°46'30"W

112°46'0"W

112°45'30"W

47°40'N

47°40'N

47°33'0"N

47°33'0"N

47°30'0"N

47°30'0"N

47°23'0"N

47°23'0"N

47°20'0"N

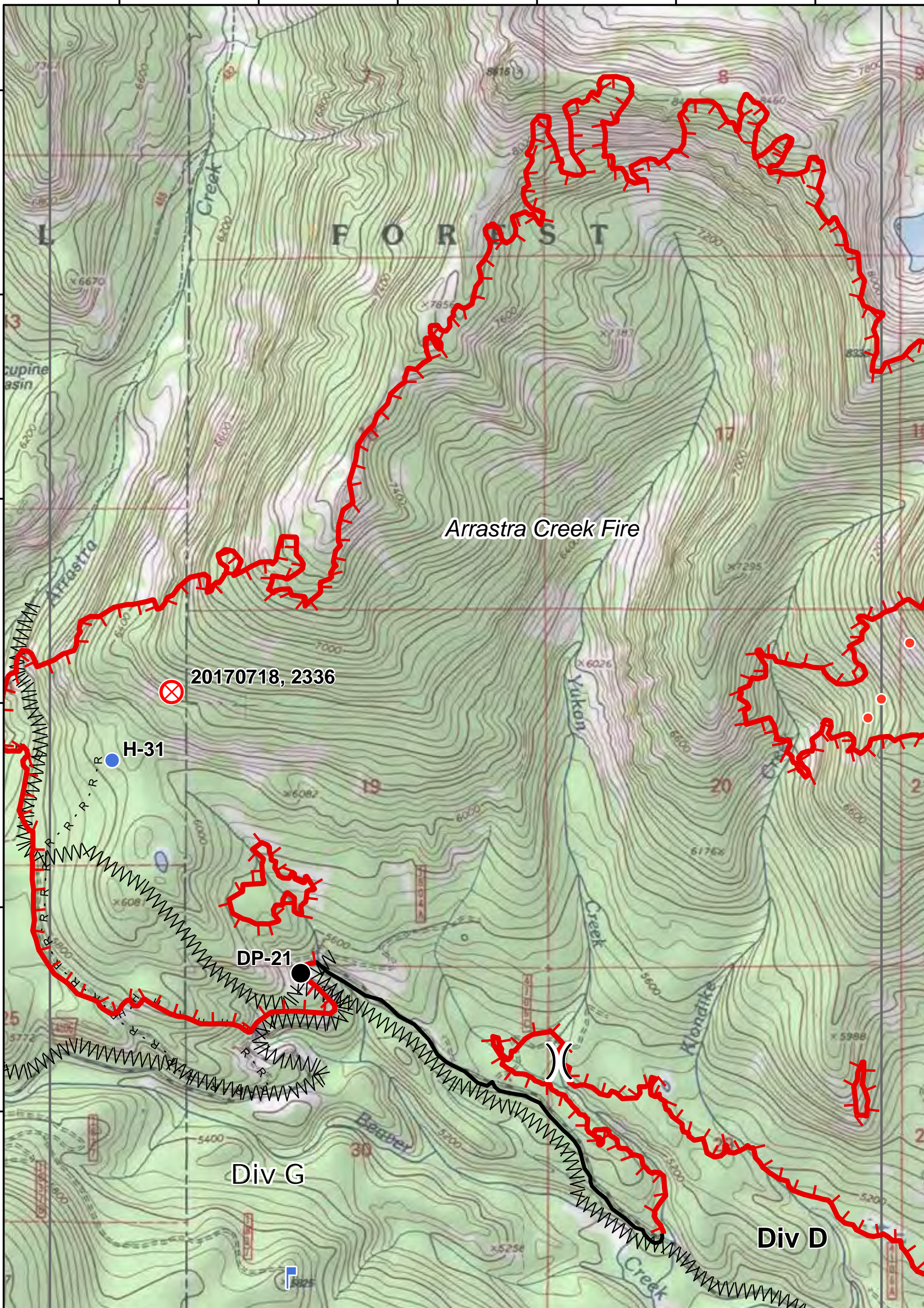
47°20'0"N

47°13'0"N

47°13'0"N

47°10'0"N

47°10'0"N



Arresta Creek Fire

20170718, 2336

H-31

DP-21

Div G

Div D



Park Creek, Arrastra Creek & Alice Creek Fires

IAP Map

08/08/2017



DMH

0

0.375

0.75

1.5 Miles

PAGE: G3

112°48'0"W

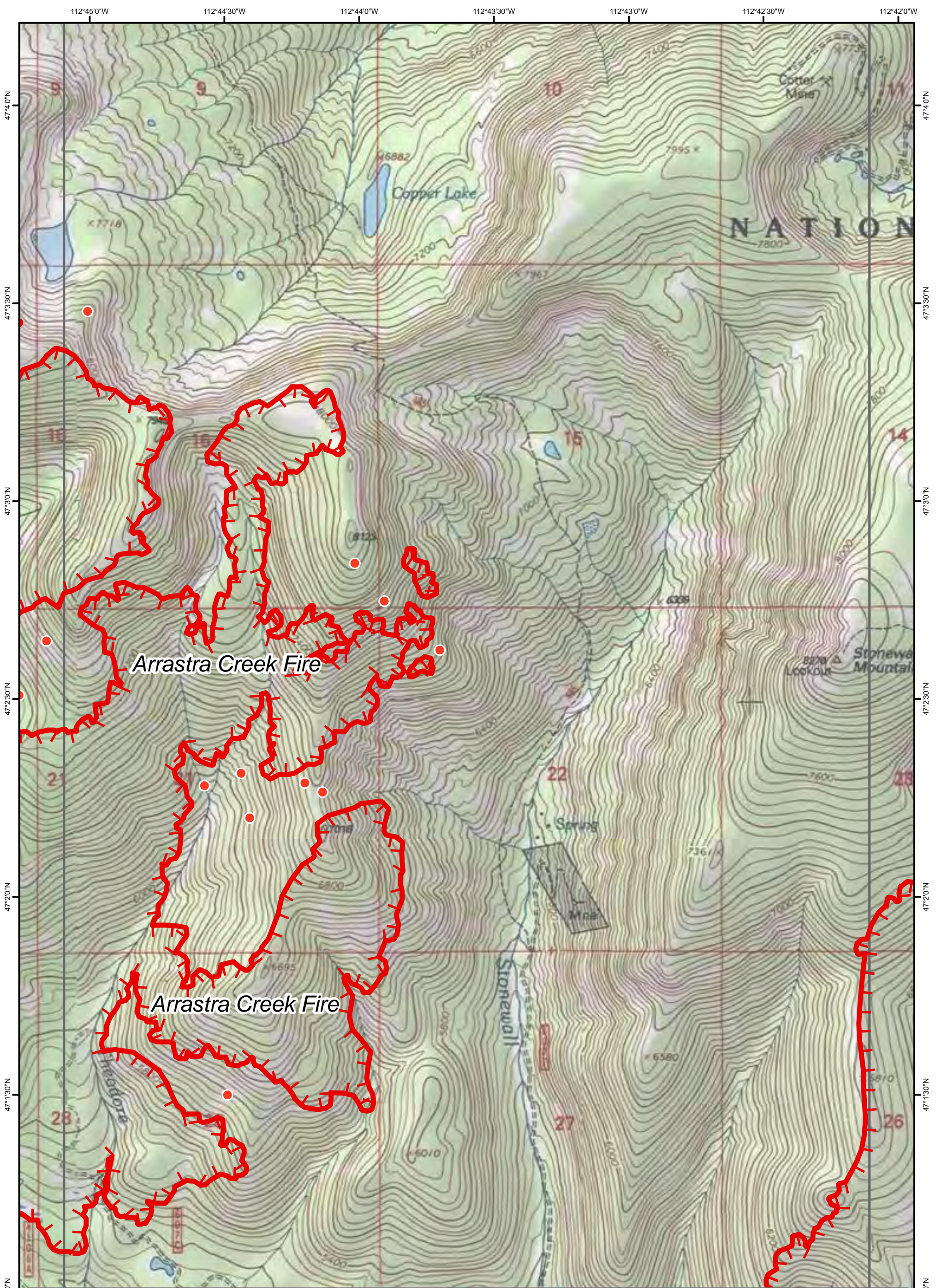
112°47'30"W

112°47'0"W

112°46'30"W

112°46'0"W

112°45'30"W



Arrastra Creek Fire

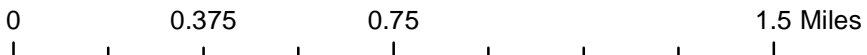
Arrastra Creek Fire

Park Creek, Arrastra Creek & Alice Creek Fires

IAP Map
08/08/2017



DMH

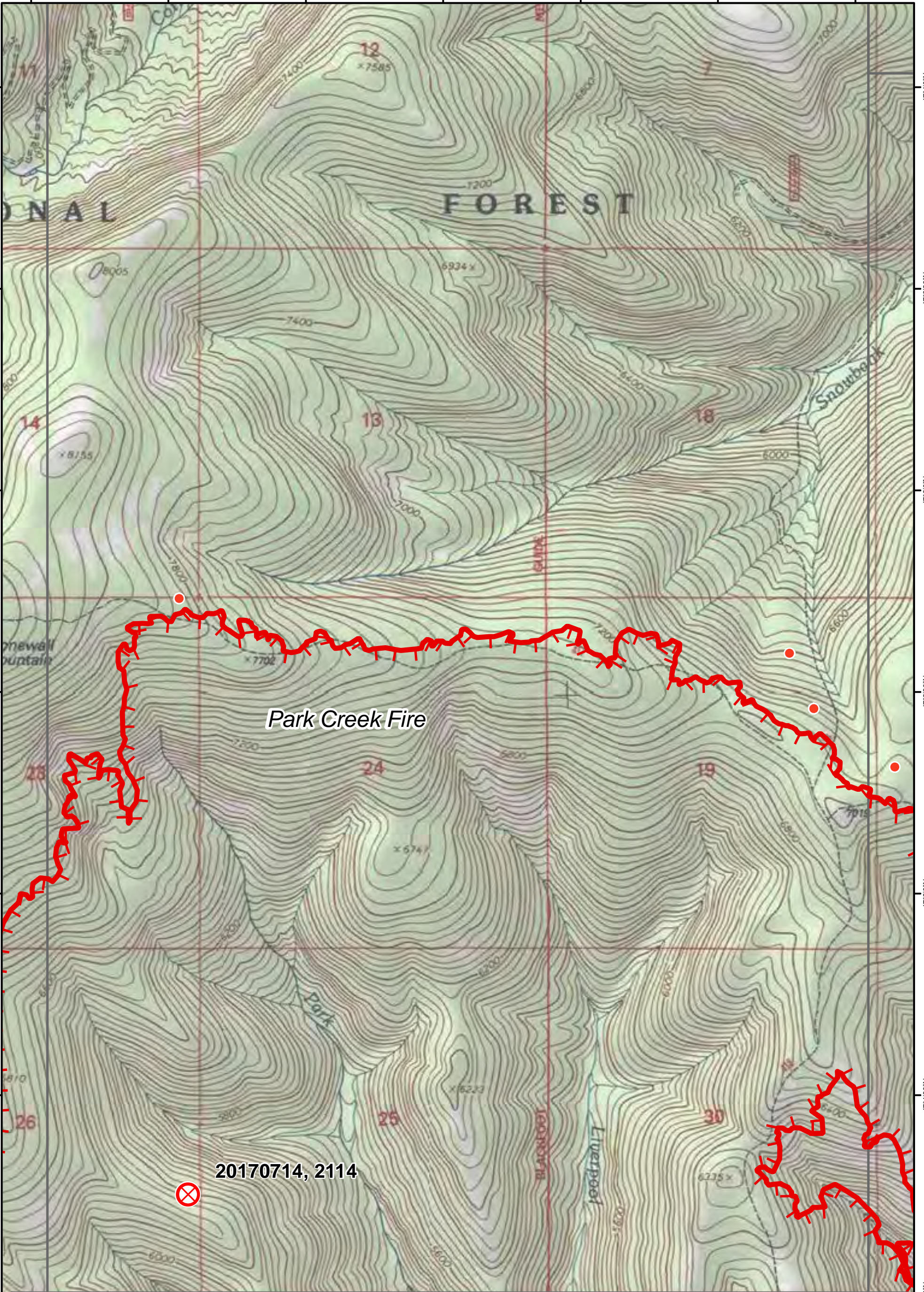


PAGE: **G4**

112°42'0"W 112°41'30"W 112°41'0"W 112°40'30"W 112°40'0"W 112°39'30"W 112°39'0"W

47°40'N
47°30'N
47°30'N
47°20'N
47°13'N
47°10'N

47°40'N
47°30'N
47°30'N
47°20'N
47°13'N
47°10'N



Park Creek Fire

20170714, 2114



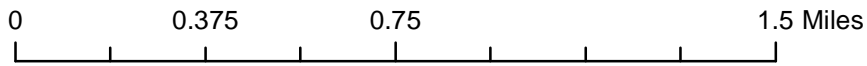
DMH



Park Creek, Arrastra Creek & Alice Creek Fires

IAP Map

08/08/2017



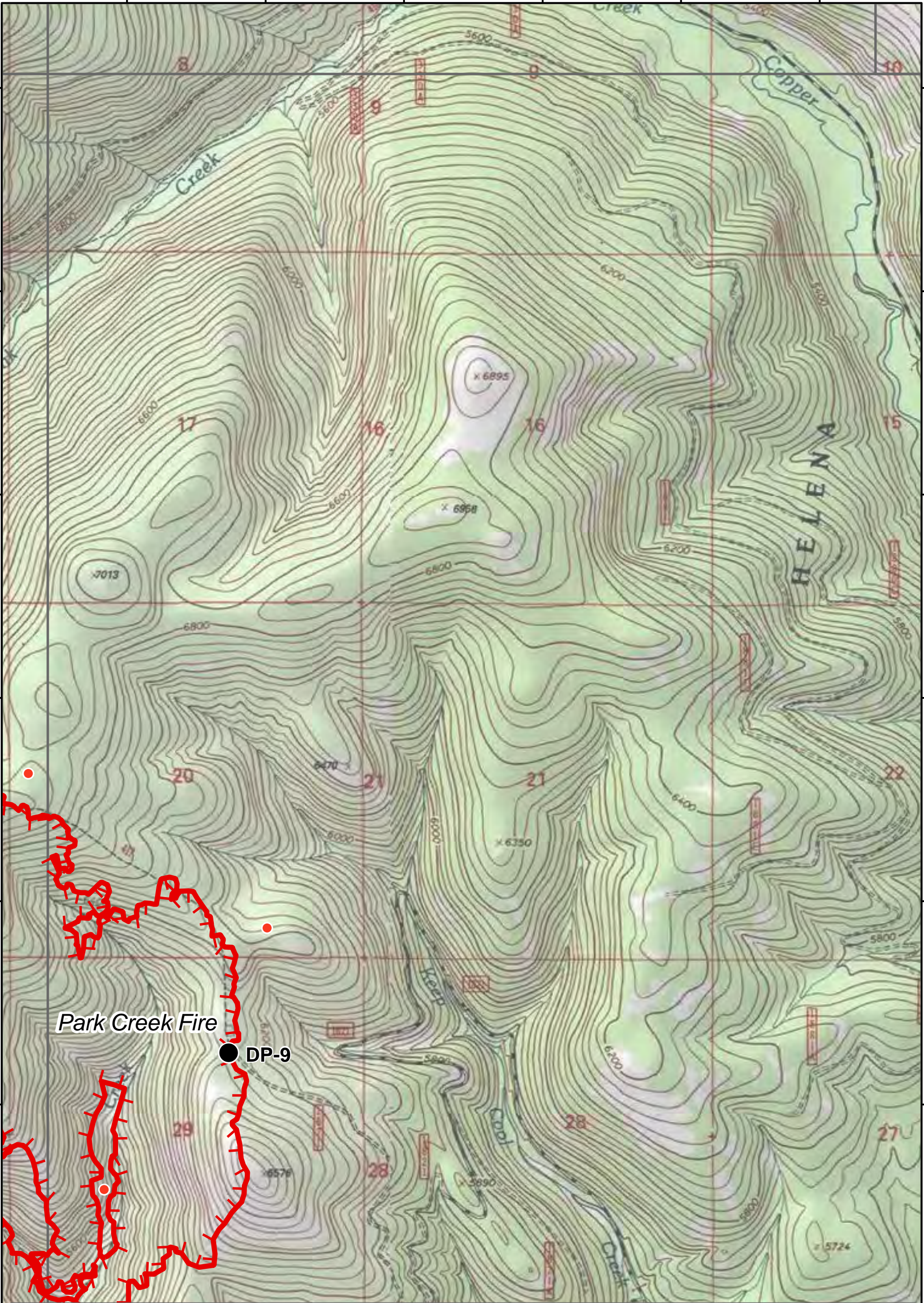
PAGE: **G5**

112°42'0"W 112°41'30"W 112°41'0"W 112°40'30"W 112°40'0"W 112°39'30"W 112°39'0"W

112°38'30"W 112°38'0"W 112°37'30"W 112°37'0"W 112°36'30"W 112°36'0"W

47°40'N
47°30'N
47°30'N
47°20'N
47°20'N
47°10'N
47°10'N

47°40'N
47°30'N
47°30'N
47°20'N
47°20'N
47°10'N
47°10'N



Park Creek Fire

● DP-9

Park Creek, Arrastra Creek & Alice Creek Fires

IAP Map
08/08/2017



DMH

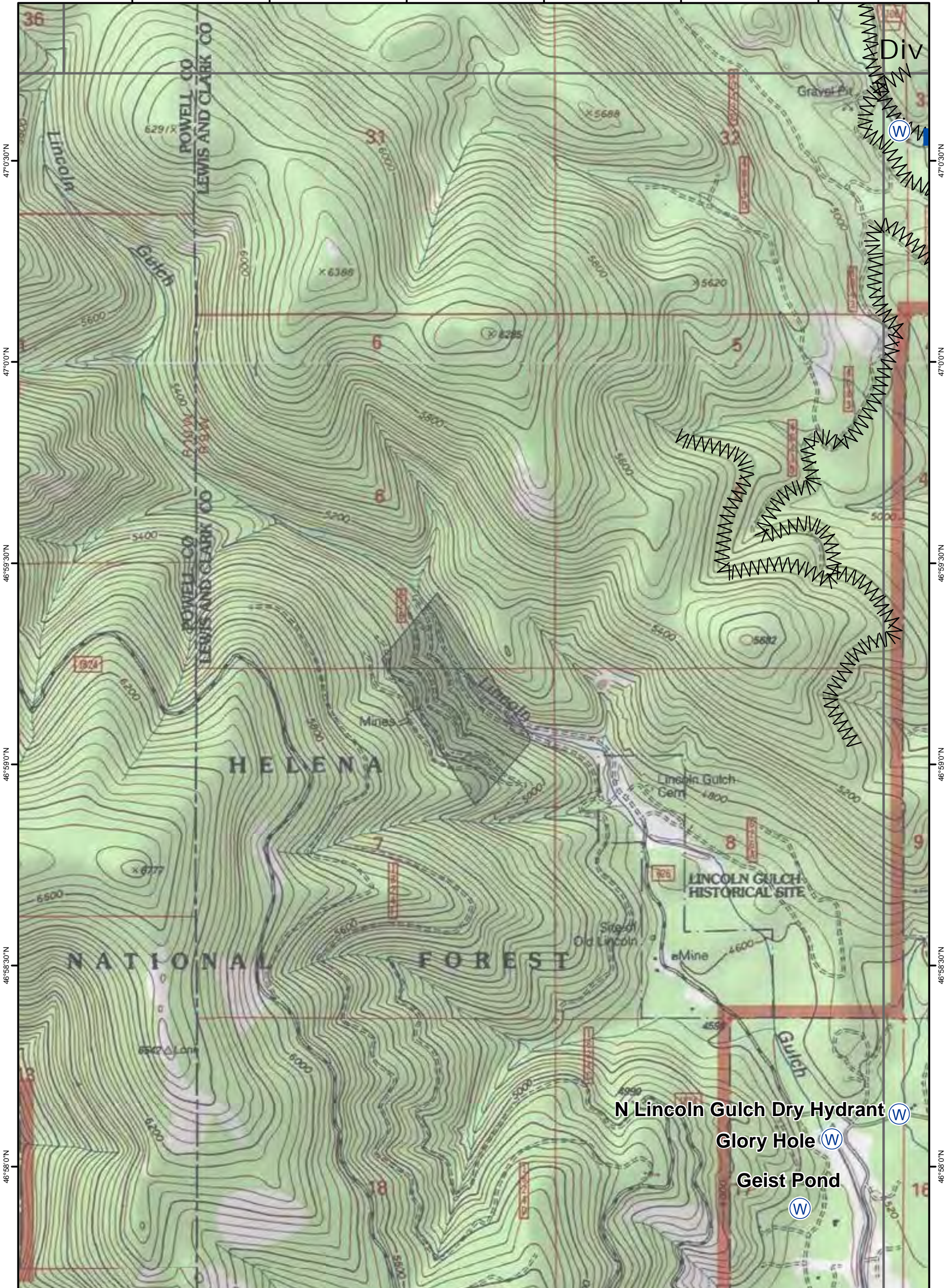
0 0.375 0.75 1.5 Miles



PAGE: **G6**

112°38'30"W 112°38'0"W 112°37'30"W 112°37'0"W 112°36'30"W 112°36'0"W

112°48'0"W 112°47'30"W 112°47'0"W 112°46'30"W 112°46'0"W 112°45'30"W



47°0'30"N
47°0'0"N
46°59'30"N
46°59'0"N
46°58'30"N
46°58'0"N
46°57'30"N

47°0'30"N
47°0'0"N
46°59'30"N
46°59'0"N
46°58'30"N
46°58'0"N
46°57'30"N



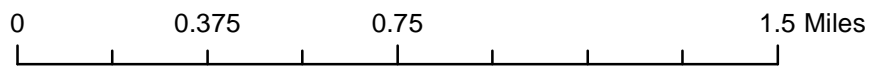
DMH



Park Creek, Arrastra Creek & Alice Creek Fires

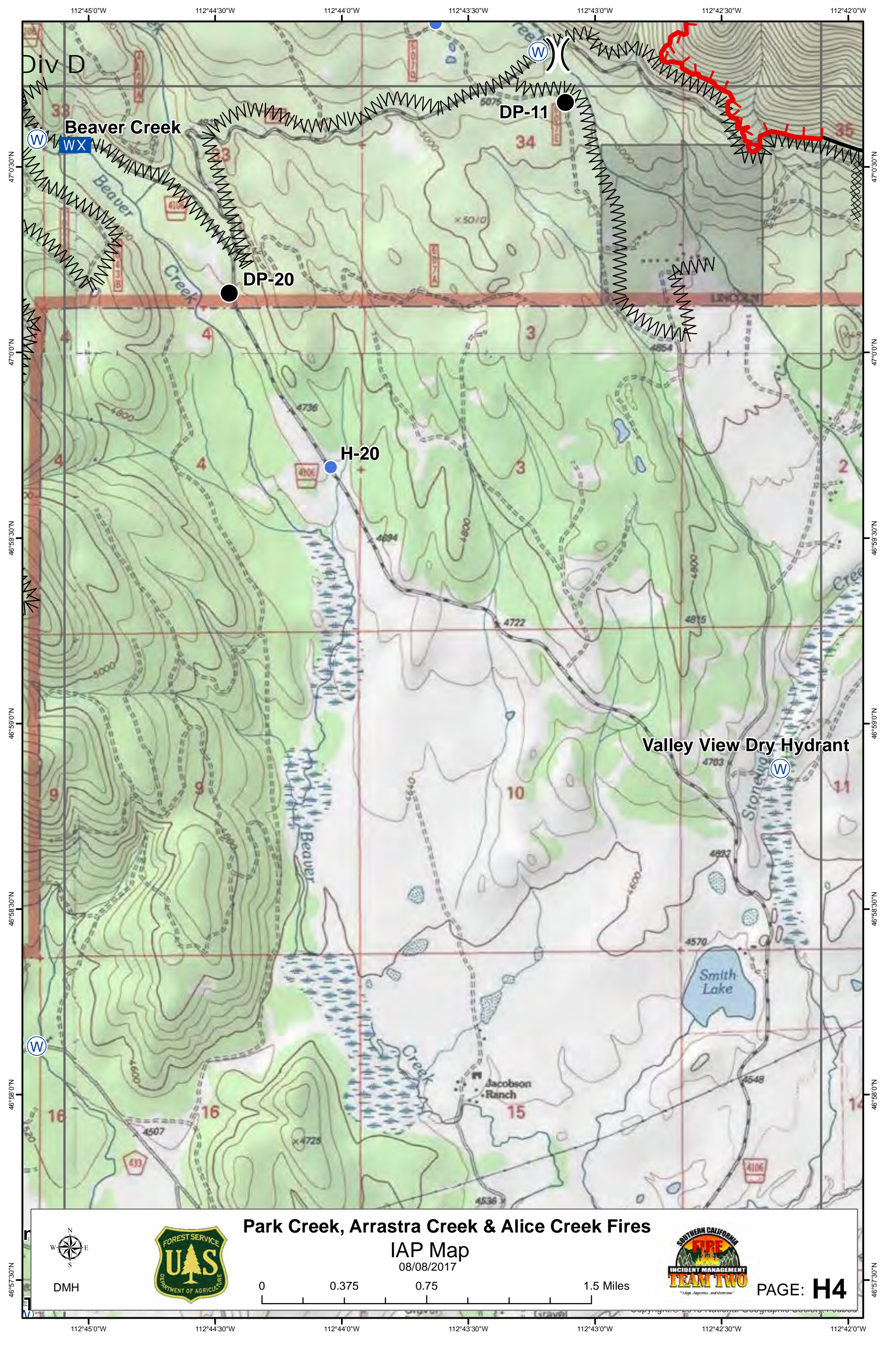
IAP Map

08/08/2017



PAGE: **H3**

112°48'0"W 112°47'30"W 112°47'0"W 112°46'30"W 112°46'0"W 112°45'30"W



Div D

Beaver Creek

DP-11

DP-20

H-20

Valley View Dry Hydrant

Smith Lake

Jacobson Ranch

Park Creek, Arrastra Creek & Alice Creek Fires

IAP Map
08/08/2017



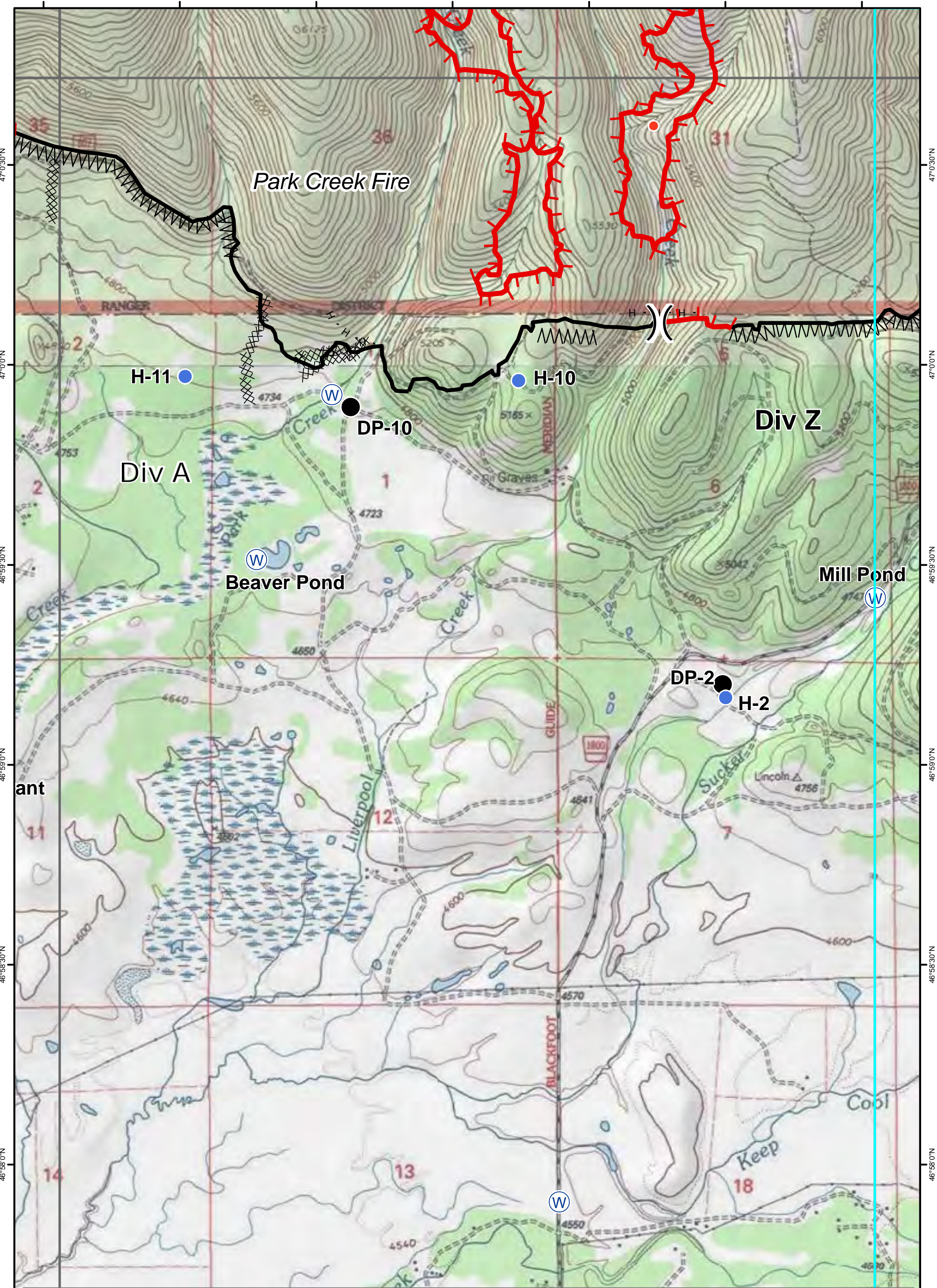
DMH

0 0.375 0.75 1.5 Miles



PAGE: **H4**

112°45'0"W 112°44'30"W 112°44'0"W 112°43'30"W 112°43'0"W 112°42'30"W 112°42'0"W
47°0'30"N 47°0'0"N 46°59'30"N 46°59'0"N 46°58'30"N 46°58'0"N 46°57'30"N

112°42'0"W 112°41'30"W 112°41'0"W 112°40'30"W 112°40'0"W 112°39'30"W 112°39'0"W



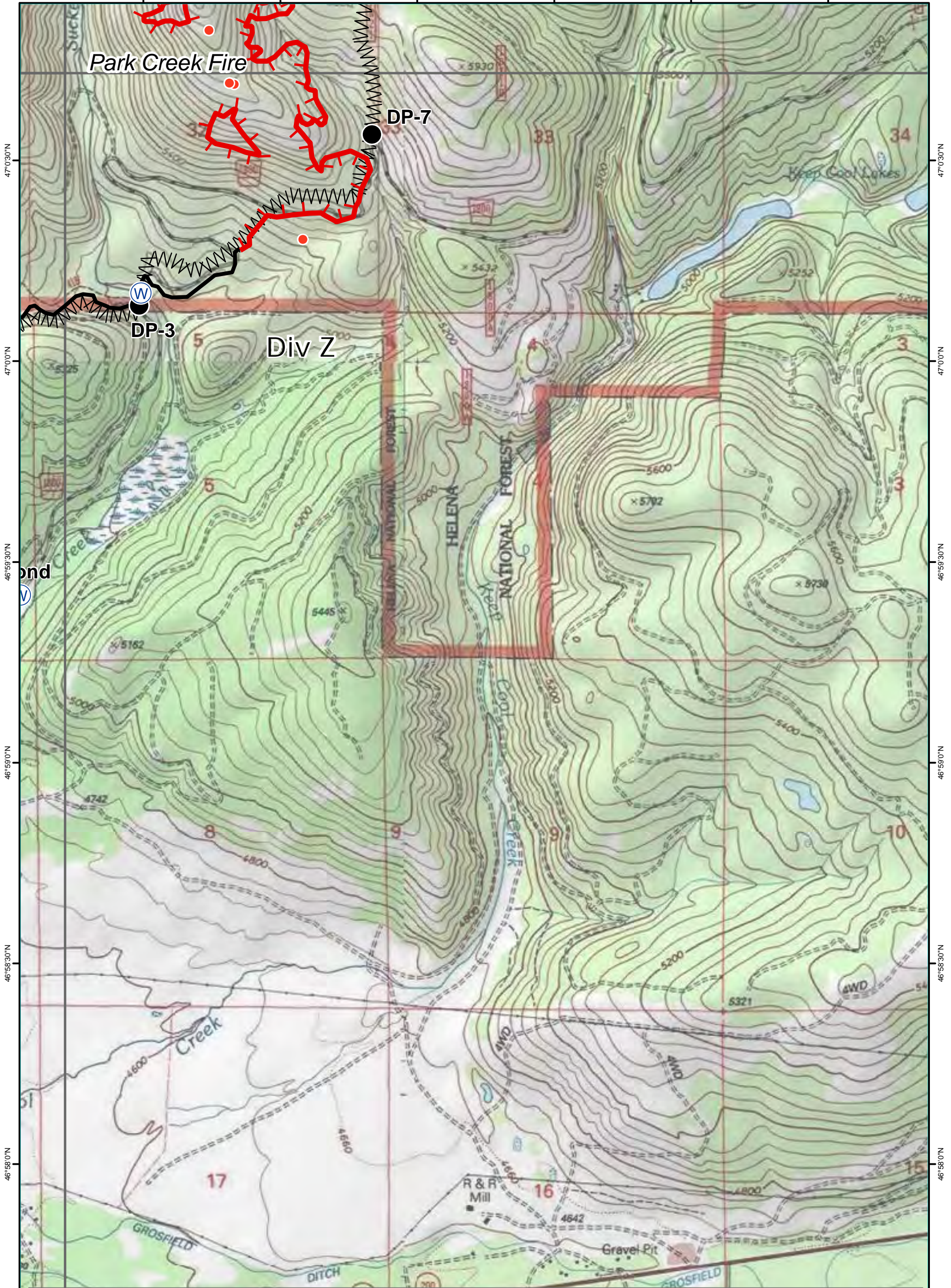
Park Creek, Arrastra Creek & Alice Creek Fires
IAP Map
 08/08/2017

DMH   **PAGE: H5**

0 0.375 0.75 1.5 Miles

112°42'0"W 112°41'30"W 112°41'0"W 112°40'30"W 112°40'0"W 112°39'30"W 112°39'0"W

112°38'30"W 112°38'0"W 112°37'30"W 112°37'0"W 112°36'30"W 112°36'0"W

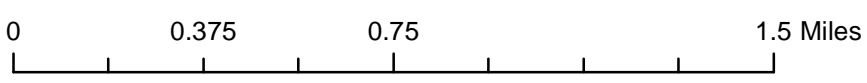


47°0'30"N
47°0'0"N
46°59'30"N
46°59'0"N
46°58'30"N
46°58'0"N
46°57'30"N

47°0'30"N
47°0'0"N
46°59'30"N
46°59'0"N
46°58'30"N
46°58'0"N
46°57'30"N



Park Creek, Arrastra Creek & Alice Creek Fires IAP Map 08/08/2017



112°38'30"W 112°38'0"W 112°37'30"W 112°37'0"W 112°36'30"W 112°36'0"W