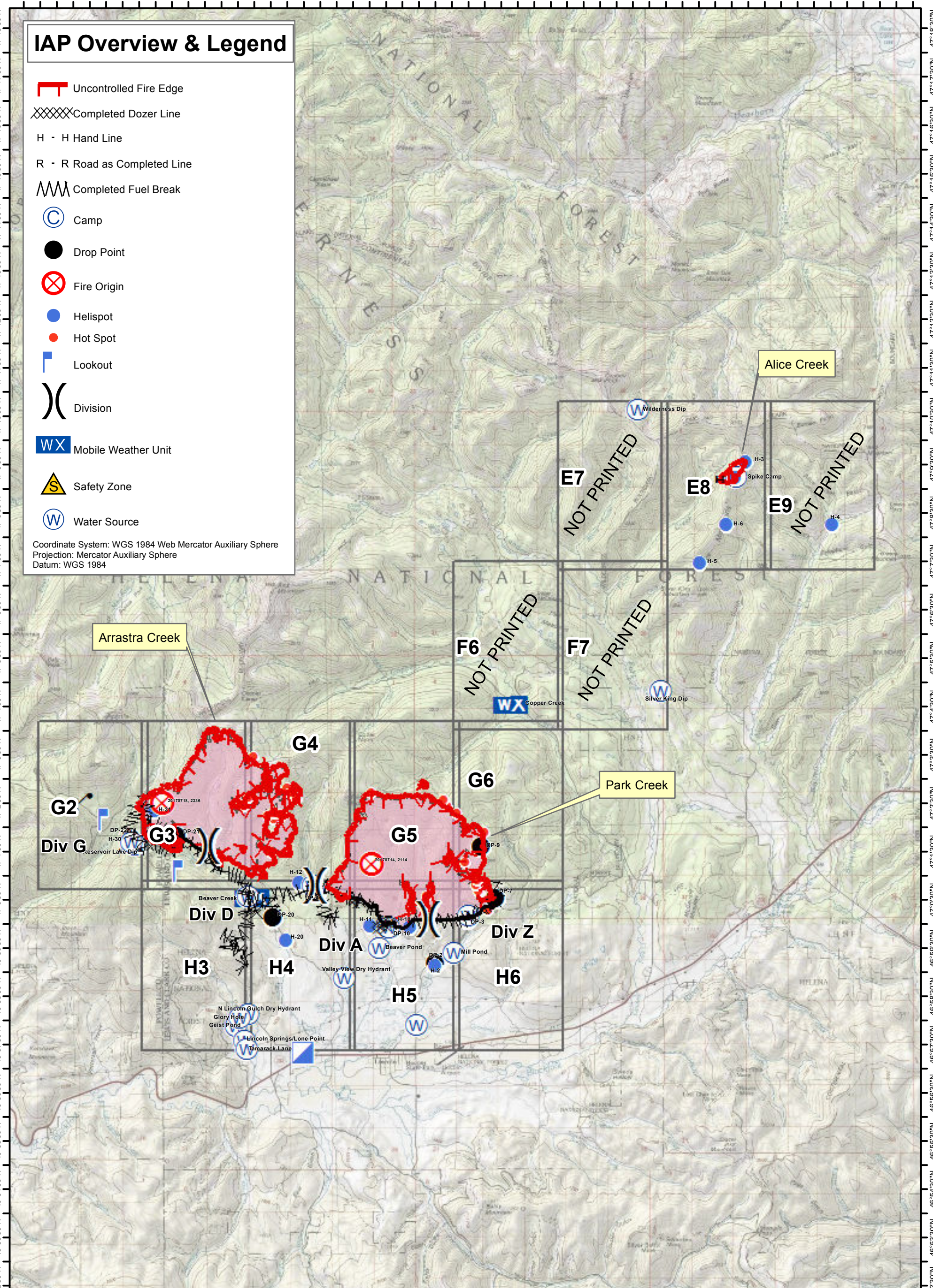



112°52'0"W 112°50'30"W 112°49'0"W 112°47'30"W 112°46'0"W 112°44'30"W 112°43'0"W 112°41'30"W 112°40'0"W 112°38'30"W 112°37'0"W 112°35'30"W 112°34'0"W 112°32'30"W 112°31'0"W 112°29'30"W 112°28'0"W 112°26'30"W 112°25'0"W




# IAP Overview & Legend

- Uncontrolled Fire Edge
- Completed Dozer Line
- H - H Hand Line
- R - R Road as Completed Line
- Completed Fuel Break
- Camp
- Drop Point
- Fire Origin
- Helispot
- Hot Spot
- Lookout
- Division
- Mobile Weather Unit
- Safety Zone
- Water Source

Coordinate System: WGS 1984 Web Mercator Auxiliary Sphere  
Projection: Mercator Auxiliary Sphere  
Datum: WGS 1984


  
 DMH




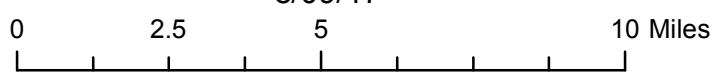
## Park Creek, Arrastra Creek & Alice Creek Fires

### IAP Overview Map

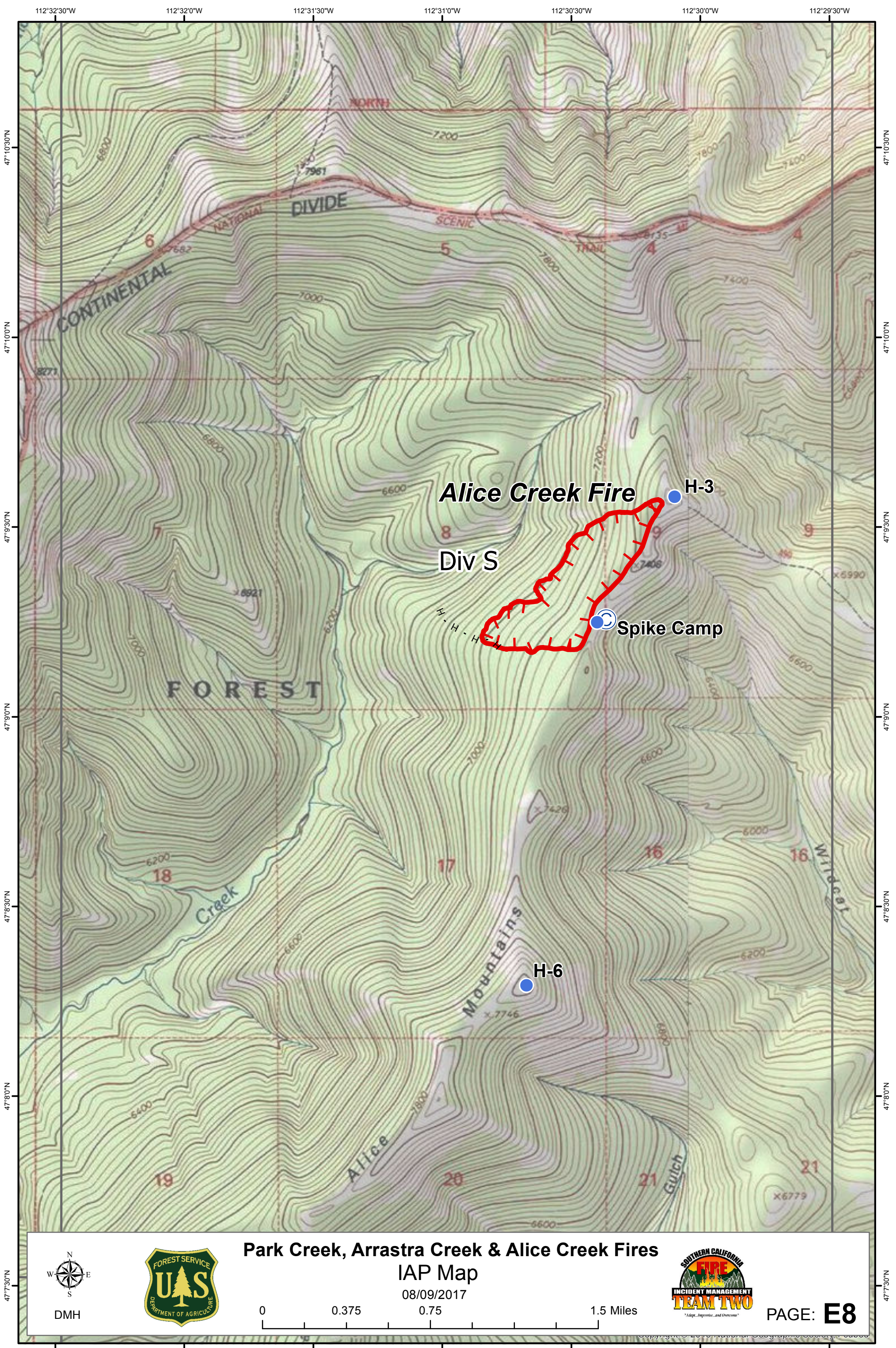
8/09/17





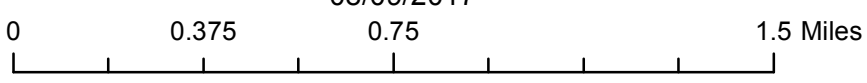


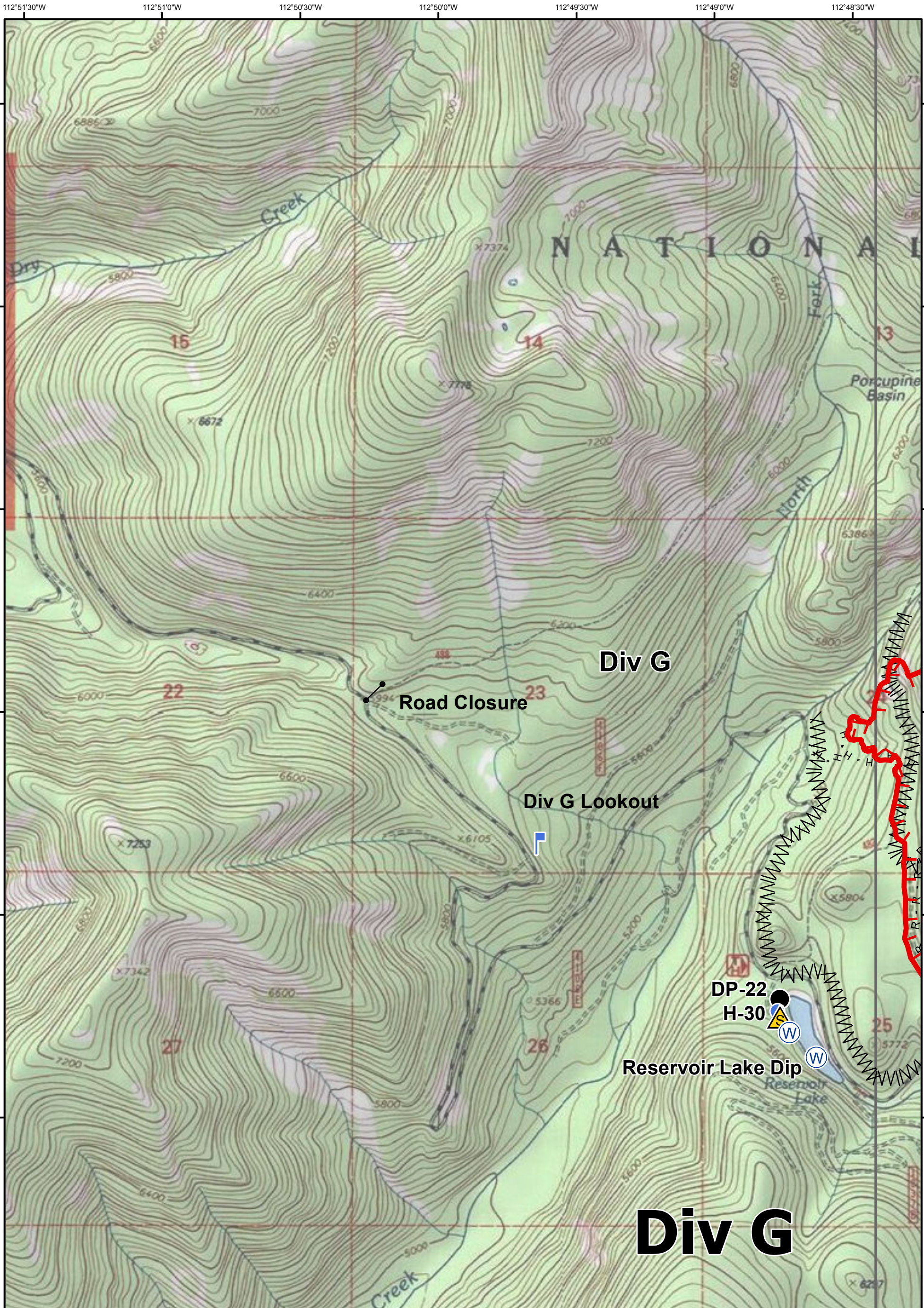
112°52'0"W 112°50'30"W 112°49'0"W 112°47'30"W 112°46'0"W 112°44'30"W 112°43'0"W 112°41'30"W 112°40'0"W 112°38'30"W 112°37'0"W 112°35'30"W 112°34'0"W 112°32'30"W 112°31'0"W 112°29'30"W 112°28'0"W 112°26'30"W 112°25'0"W



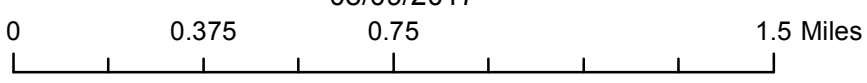



### Park Creek, Arrastra Creek & Alice Creek Fires IAP Map

08/09/2017







**Park Creek, Arrastra Creek & Alice Creek Fires**  
**IAP Map**  
 08/09/2017  


**PAGE: G2**

112°51'30"W 112°51'0"W 112°50'30"W 112°50'0"W 112°49'30"W 112°49'0"W 112°48'30"W

112°48'0"W

112°47'30"W

112°47'0"W

112°46'30"W

112°46'0"W

112°45'30"W

47°40'N

47°40'N

47°33'N

47°33'N

47°30'N

47°30'N

47°23'N

47°23'N

47°20'N

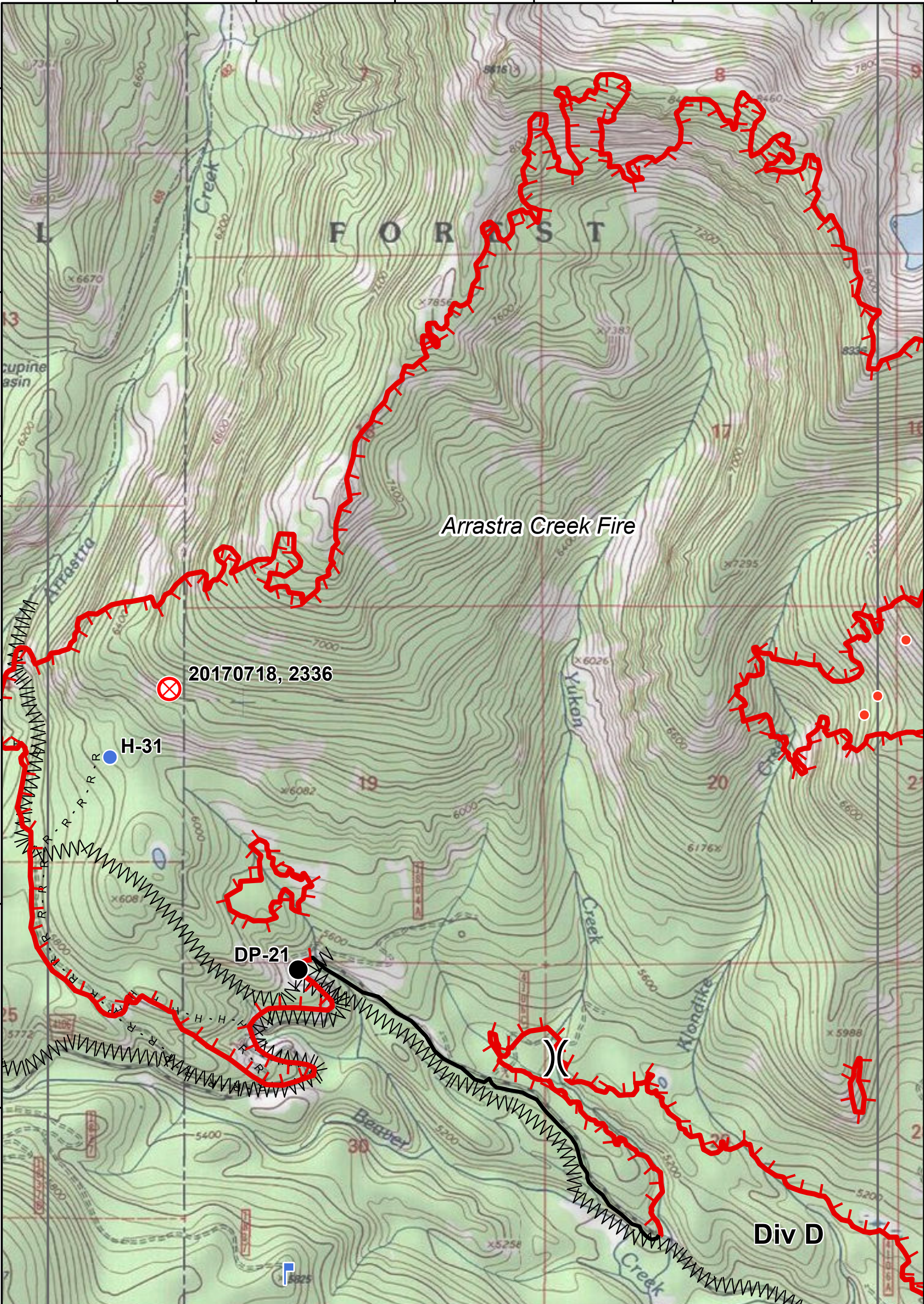
47°20'N

47°13'N

47°13'N

47°10'N

47°10'N



Arrastra Creek Fire

20170718, 2336

H-31

DP-21

Div D

**Park Creek, Arrastra Creek & Alice Creek Fires**  
**IAP Map**

08/09/2017

0 0.375 0.75 1.5 Miles



DMH



PAGE: **G3**

112°48'0"W

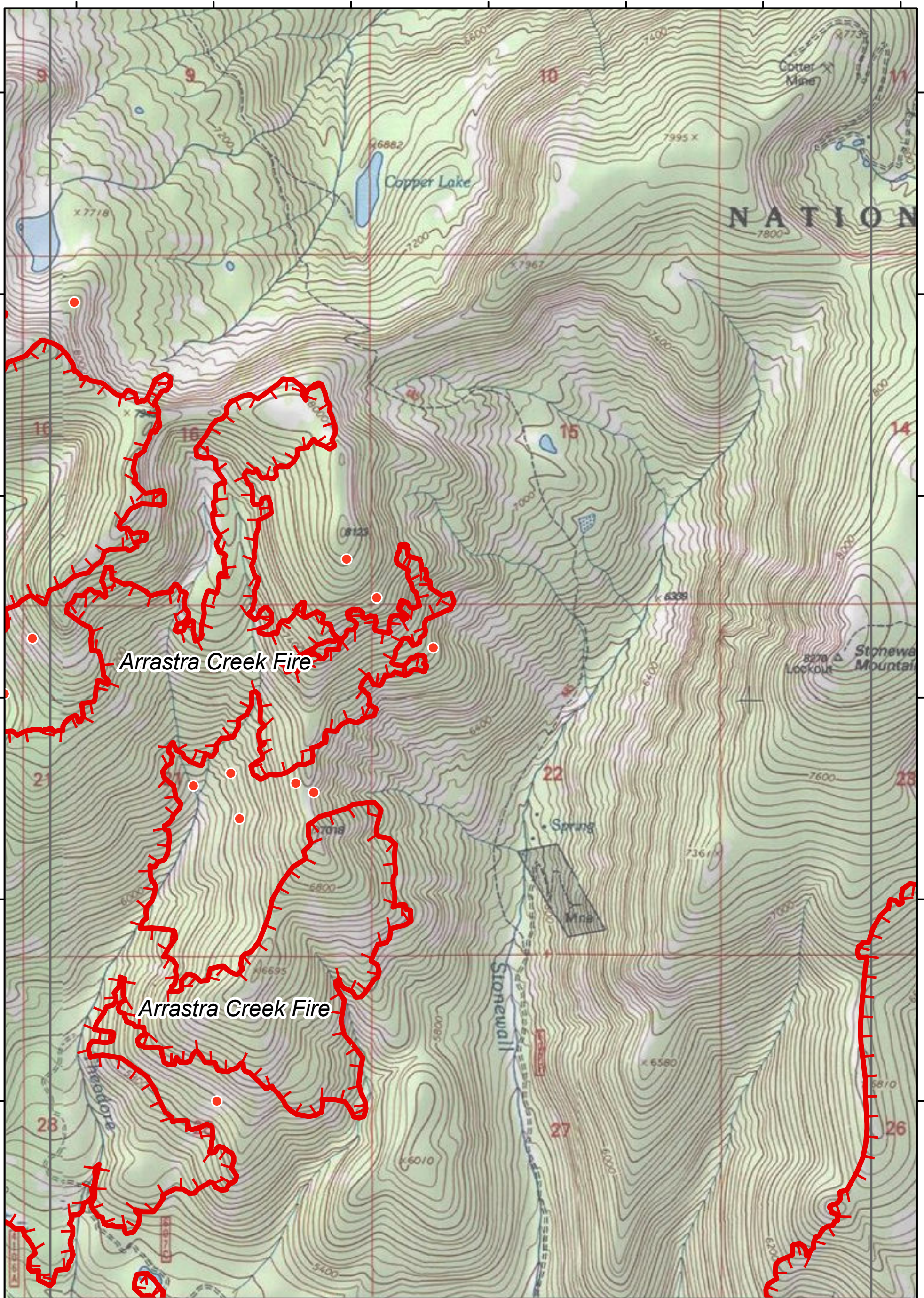
112°47'30"W

112°47'0"W

112°46'30"W

112°46'0"W

112°45'30"W

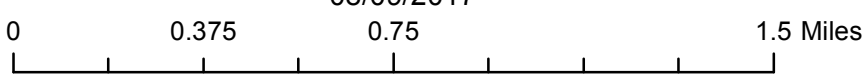


DMH



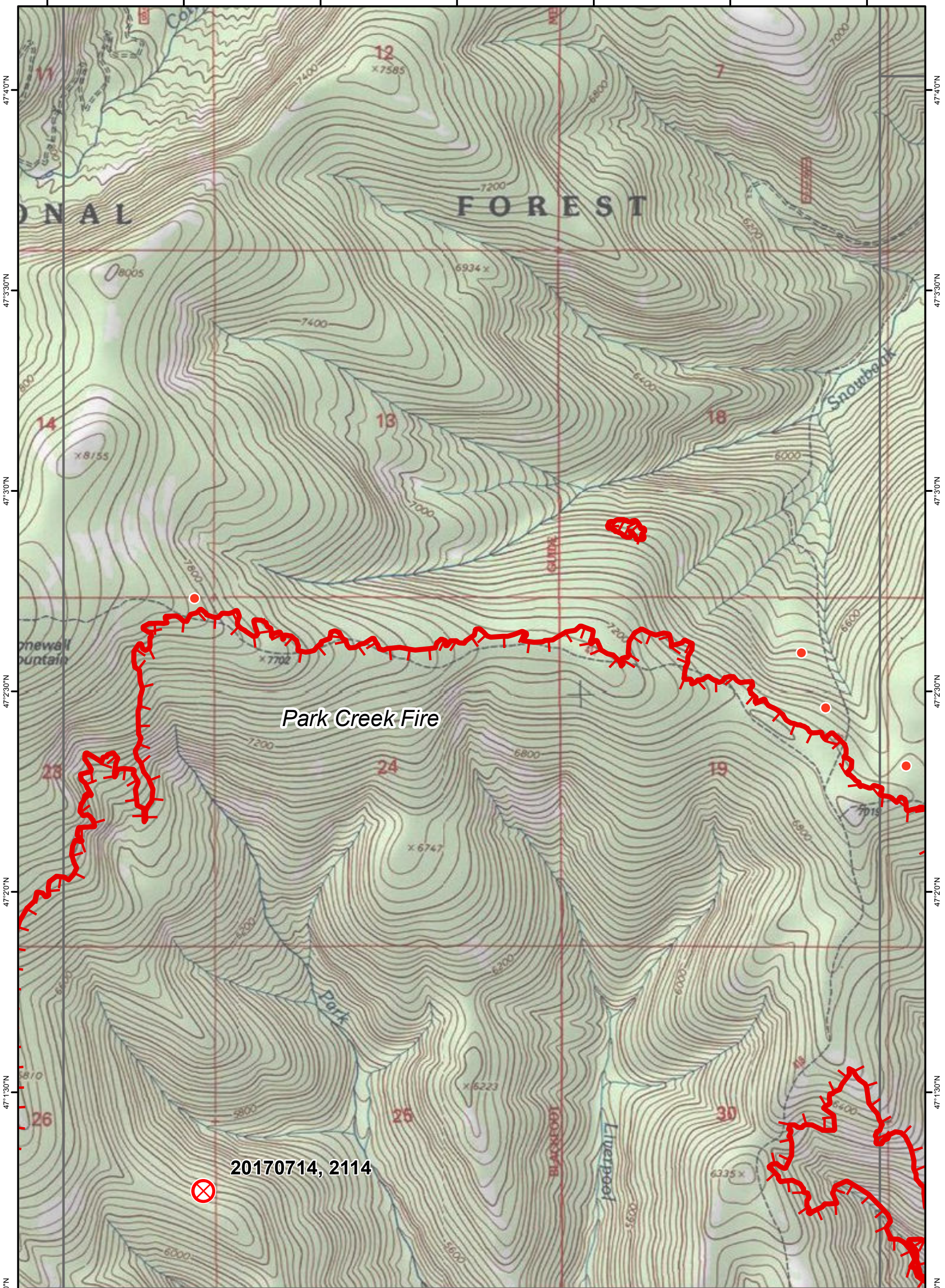
**Park Creek, Arrastra Creek & Alice Creek Fires**  
IAP Map

08/09/2017





PAGE: **G4**

112°42'0"W 112°41'30"W 112°41'0"W 112°40'30"W 112°40'0"W 112°39'30"W 112°39'0"W



**Park Creek, Arrastra Creek & Alice Creek Fires**  
**IAP Map**  
 08/09/2017

DMH   **PAGE: G5**

0 0.375 0.75 1.5 Miles

112°42'0"W 112°41'30"W 112°41'0"W 112°40'30"W 112°40'0"W 112°39'30"W 112°39'0"W

112°38'30"W

112°38'0"W

112°37'30"W

112°37'0"W

112°36'30"W

112°36'0"W

47°40'N

47°40'N

47°33'0"N

47°33'0"N

47°30'0"N

47°30'0"N

47°23'0"N

47°23'0"N

47°20'0"N

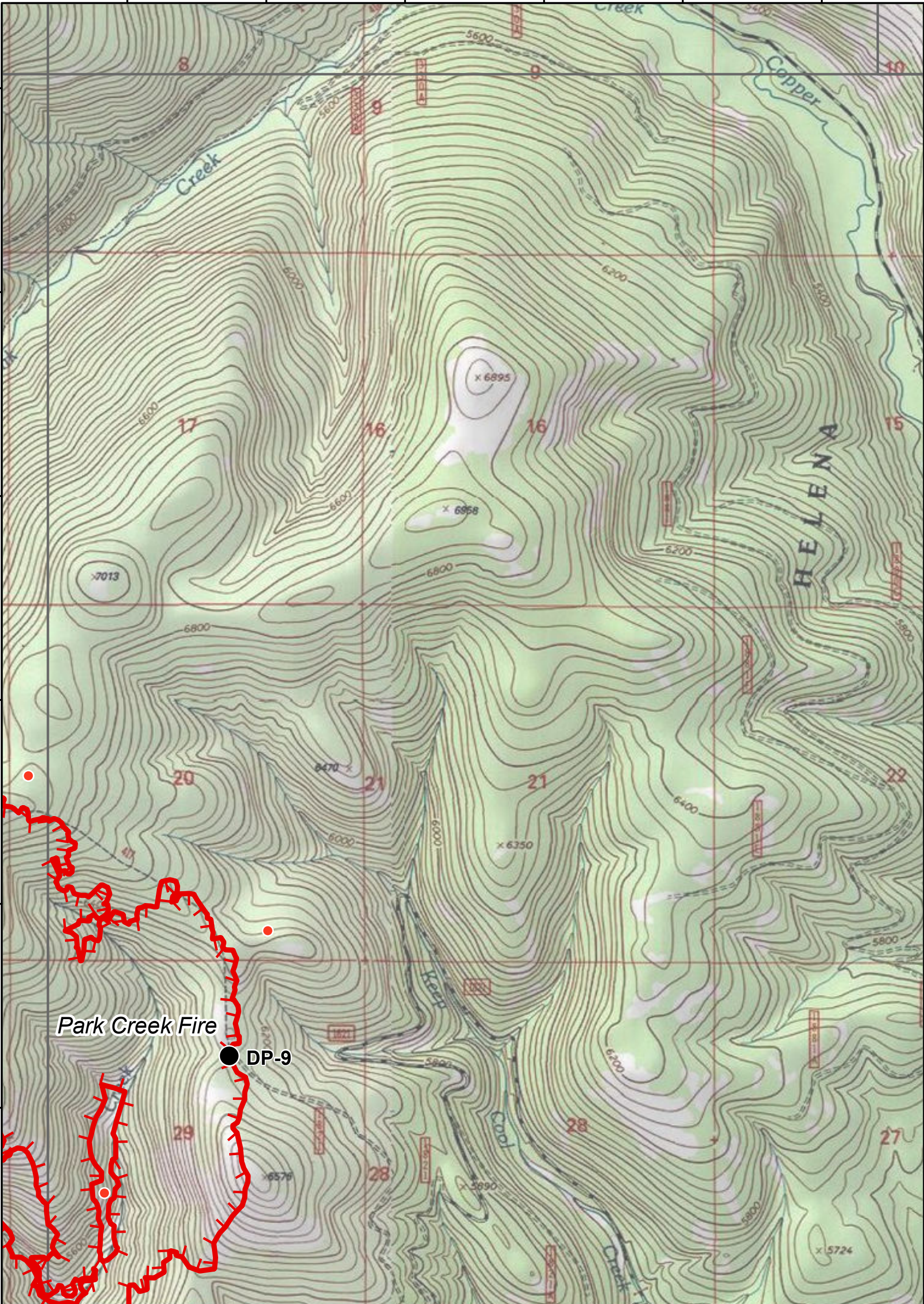
47°20'0"N

47°13'0"N

47°13'0"N

47°10'0"N

47°10'0"N



Park Creek Fire

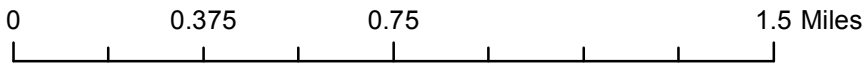
DP-9

**Park Creek, Arrastra Creek & Alice Creek Fires**  
**IAP Map**

08/09/2017



DMH



PAGE: **G6**

112°38'30"W

112°38'0"W

112°37'30"W

112°37'0"W

112°36'30"W

112°36'0"W

112°48'0"W

112°47'30"W

112°47'0"W

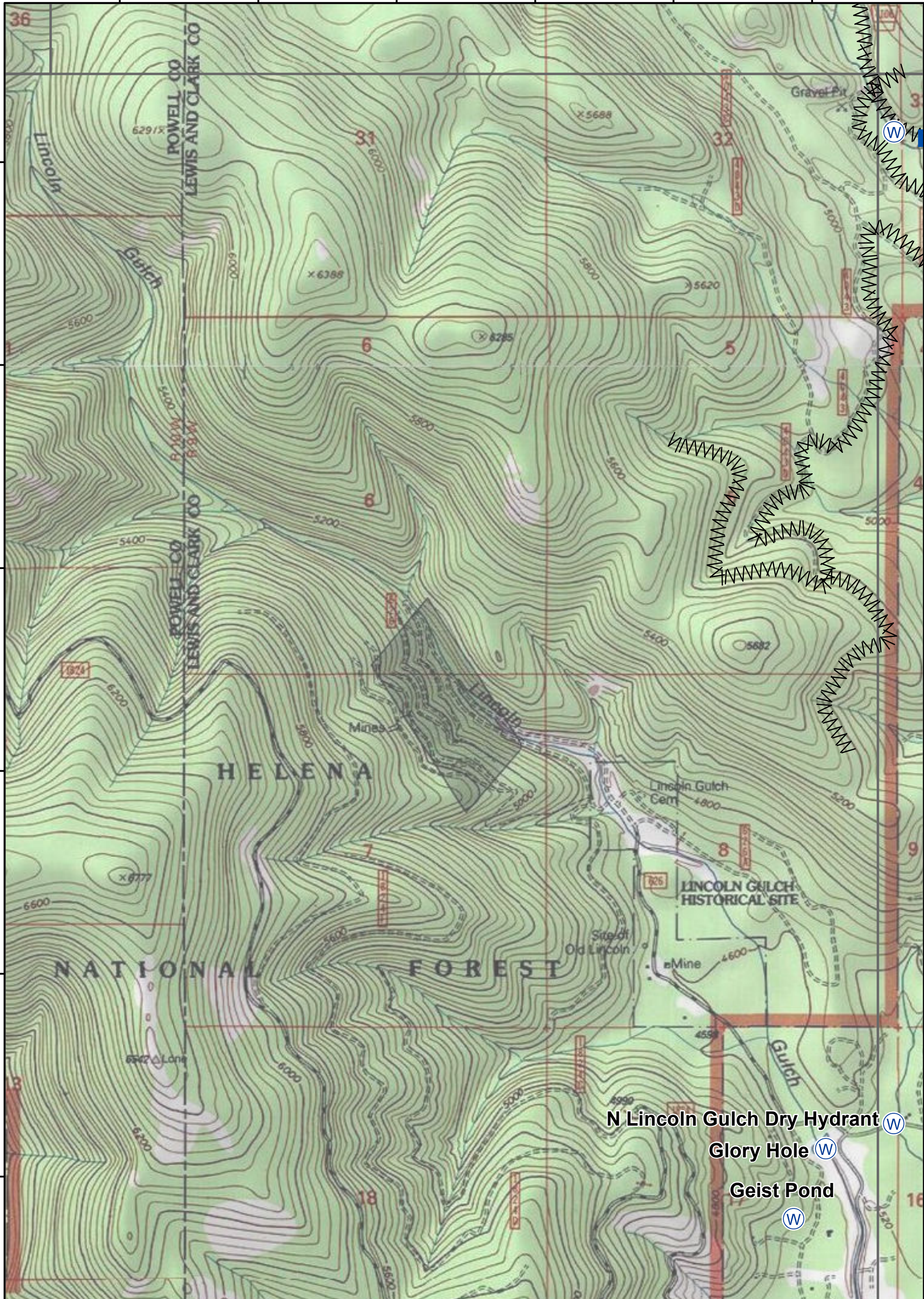
112°46'30"W

112°46'0"W

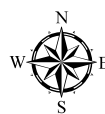
112°45'30"W

47°0'30"N  
47°0'0"N  
46°59'30"N  
46°59'0"N  
46°58'30"N  
46°58'0"N  
46°57'30"N

47°0'30"N  
47°0'0"N  
46°59'30"N  
46°59'0"N  
46°58'30"N  
46°58'0"N  
46°57'30"N



N Lincoln Gulch Dry Hydrant (W)  
 Glory Hole (W)  
 Geist Pond (W)

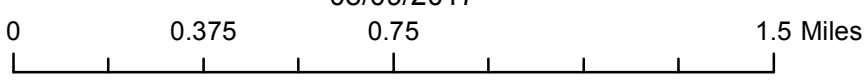


DMH



**Park Creek, Arrastra Creek & Alice Creek Fires**  
**IAP Map**

08/09/2017



PAGE: **H3**

112°48'0"W

112°47'30"W

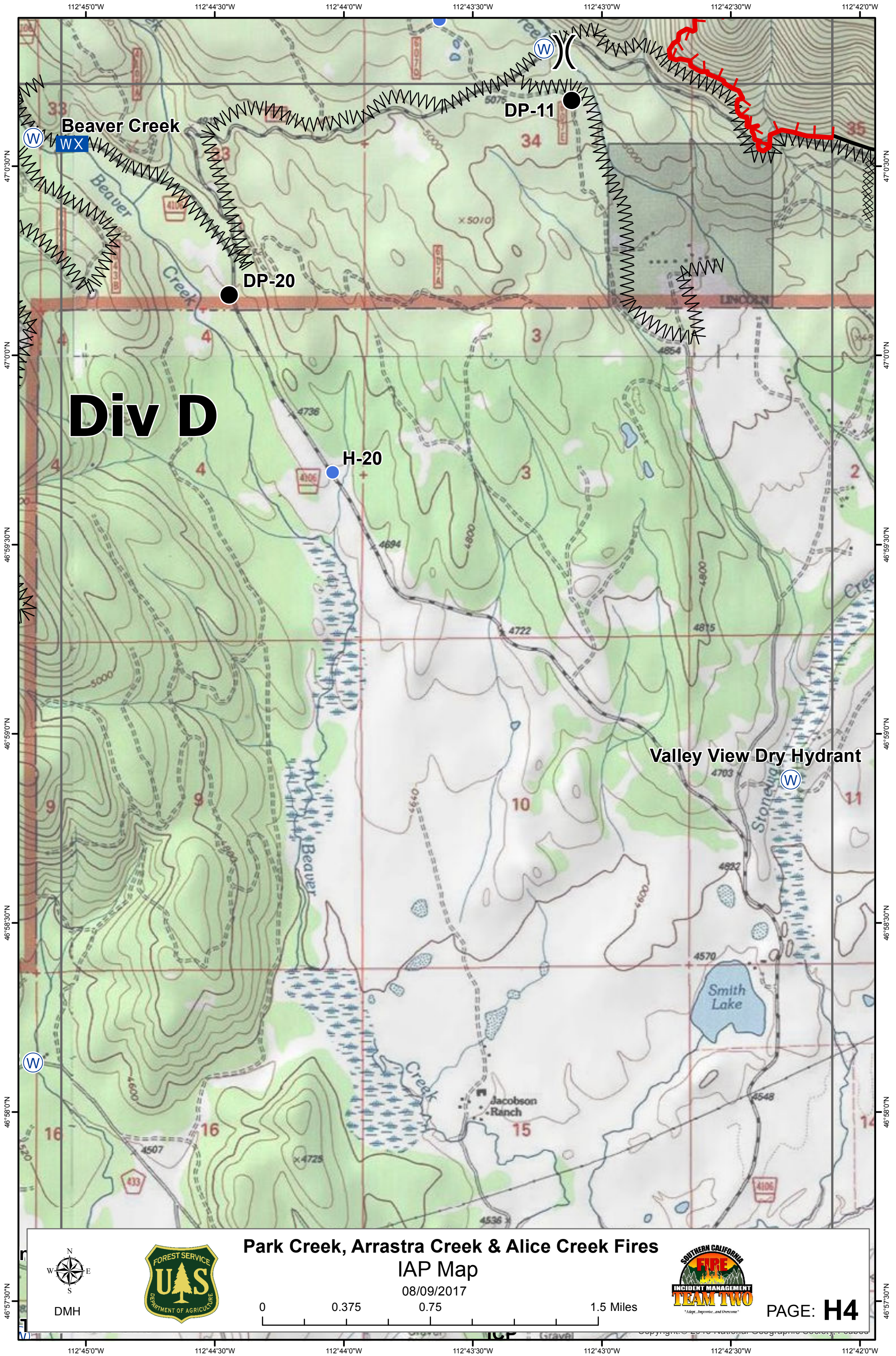
112°47'0"W

112°46'30"W

112°46'0"W

112°45'30"W





**Div D**

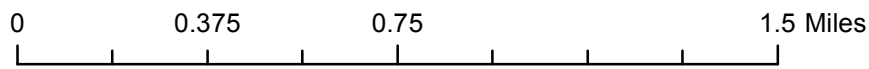


DMH



**Park Creek, Arrastra Creek & Alice Creek Fires  
IAP Map**

08/09/2017



PAGE: **H4**

112°45'0"W 112°44'30"W 112°44'0"W 112°43'30"W 112°43'0"W 112°42'30"W 112°42'0"W

46°57'30"N

46°57'30"N

46°58'0"N

46°58'0"N

46°58'30"N

46°58'30"N

46°59'0"N

46°59'0"N

46°59'30"N

46°59'30"N

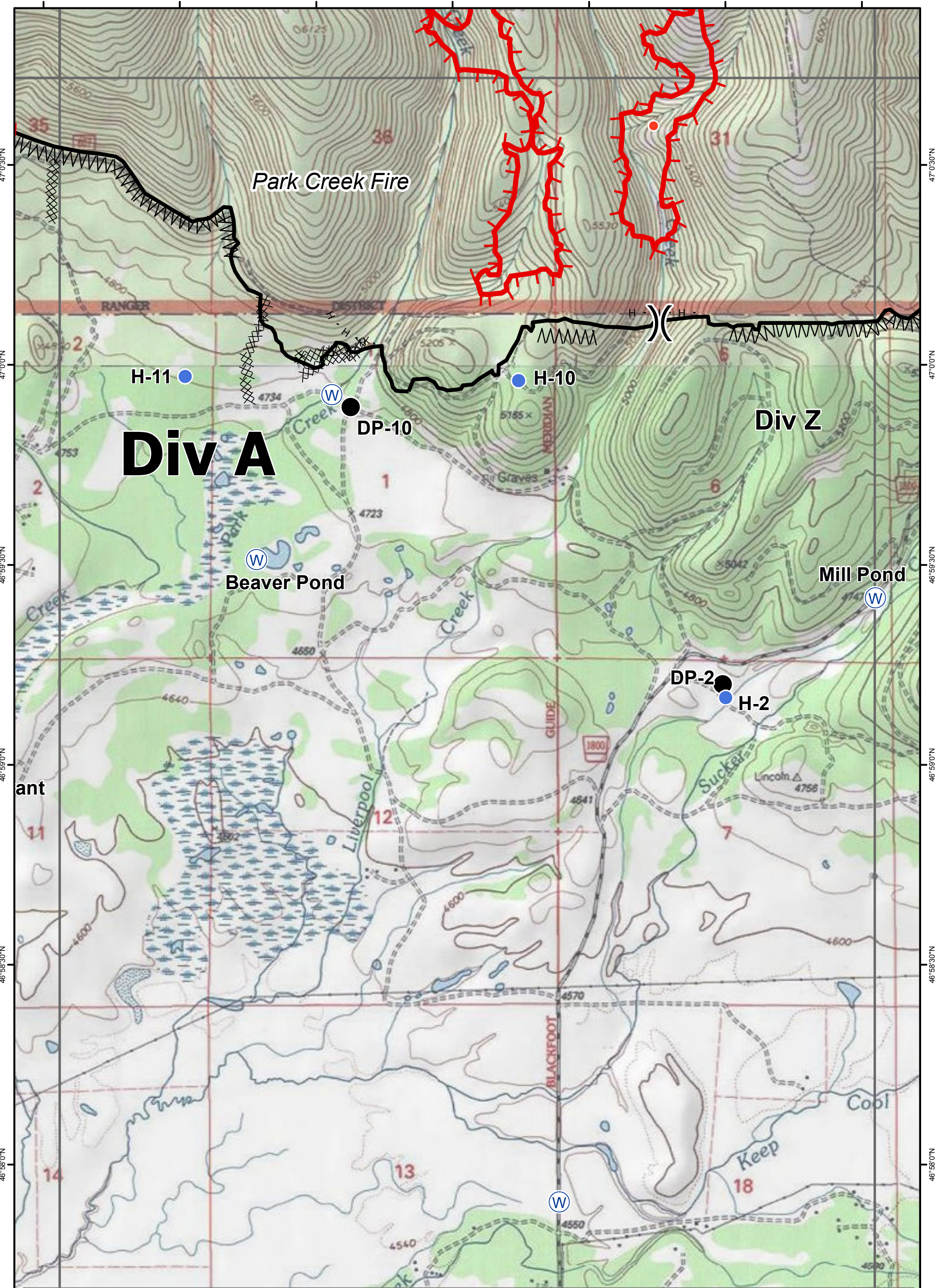
47°0'0"N

47°0'0"N

47°0'30"N

47°0'30"N

112°42'0"W 112°41'30"W 112°41'0"W 112°40'30"W 112°40'0"W 112°39'30"W 112°39'0"W



# Div A

# Div Z

## Park Creek Fire

### Beaver Pond

### Mill Pond

H-11

H-10

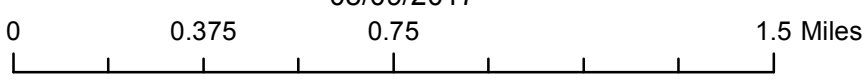
DP-10

DP-2

H-2

## Park Creek, Arrastra Creek & Alice Creek Fires IAP Map

08/09/2017



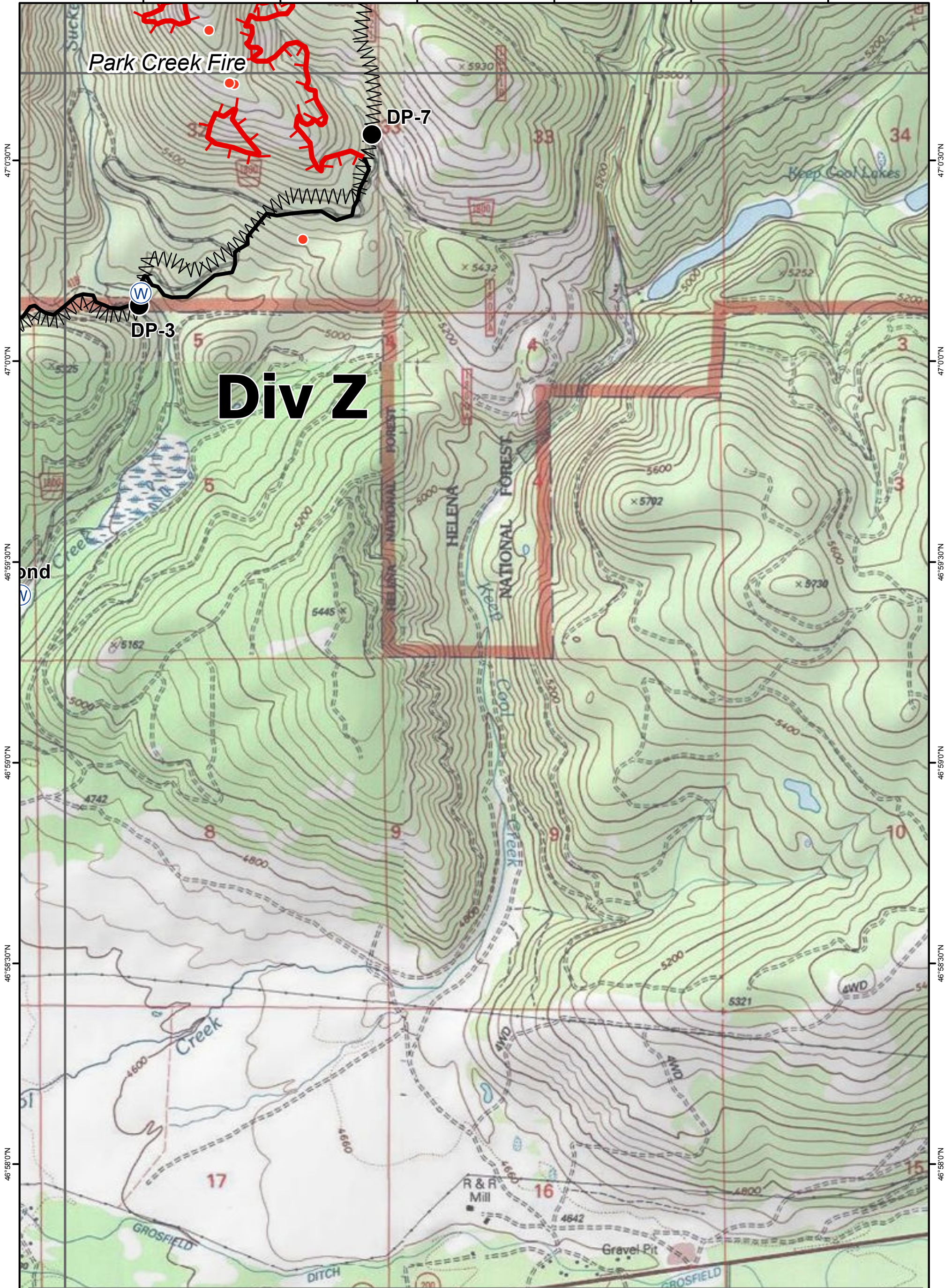
DMH



PAGE: **H5**

112°42'0"W 112°41'30"W 112°41'0"W 112°40'30"W 112°40'0"W 112°39'30"W 112°39'0"W

112°38'30"W 112°38'0"W 112°37'30"W 112°37'0"W 112°36'30"W 112°36'0"W



47°0'30"N  
47°0'0"N  
46°59'30"N  
46°59'0"N  
46°58'30"N  
46°58'0"N  
46°57'30"N

47°0'30"N  
47°0'0"N  
46°59'30"N  
46°59'0"N  
46°58'30"N  
46°58'0"N  
46°57'30"N

Park Creek Fire

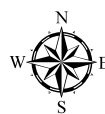
DP-7

DP-3

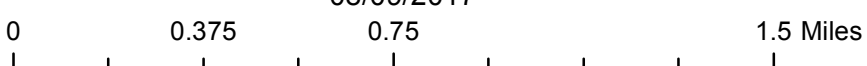
Div Z

Park Creek, Arrastra Creek & Alice Creek Fires  
IAP Map

08/09/2017



DMH



PAGE: H6

112°38'30"W 112°38'0"W 112°37'30"W 112°37'0"W 112°36'30"W 112°36'0"W