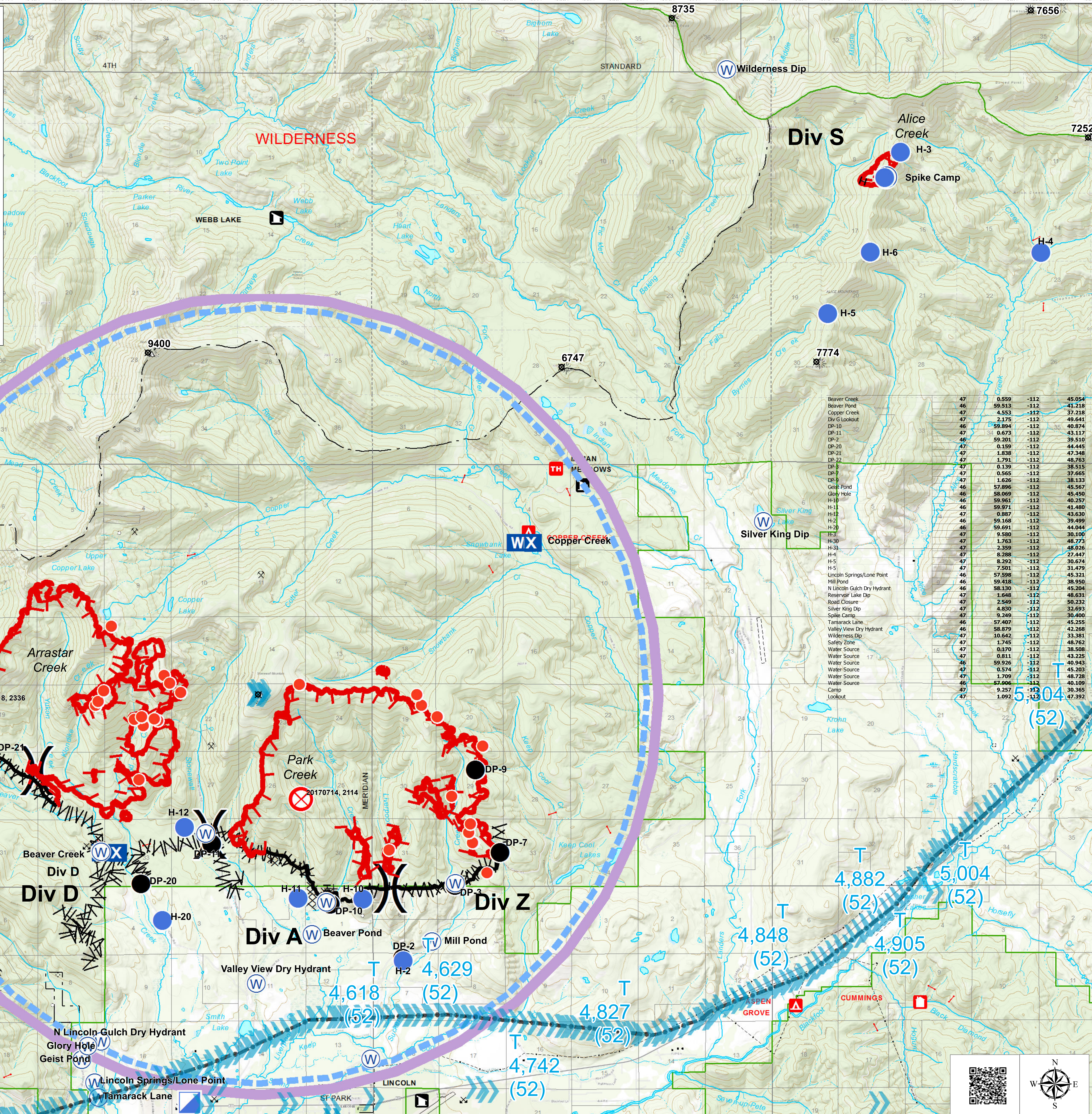


Park Creek, Arrastra Creek Alice Creek Fires

AirOps Map
10 Aug 2017

--- Uncontrolled Fire Edge
 Completed Dozer Line
 Hand Line
 Road as Completed Line
 MWWW Completed Fuel Break
 Transmission Lines
 TFR
● Helispot
● Drop Point
 Unimproved Landing Site
 Water Source
WX Mobile Weather Unit
 Camp
⊗ Fire Origin
● Hot Spot
 Division
 Lookout

0 0.25 0.5 1 1.5 2 2.5 3 3.5 Miles
DMH 8/9/2017 Contour Interval 200 Feet



Beaver Creek	47	0.559	-112	45,054
Beaver Pond	46	59.513	-112	41,218
Copper Creek	47	4.553	-112	37,218
Div G Lookout	47	2.175	-112	49,641
DP-10	46	59.894	-112	40,874
DP-11	47	0.673	-112	43,117
DP-2	46	59.201	-112	39,510
DP-20	47	0.159	-112	44,445
DP-21	47	1.838	-112	47,348
DP-22	47	1.791	-112	48,763
DP-3	47	0.139	-112	38,515
DP-7	47	0.565	-112	37,665
DP-9	47	1.626	-112	38,133
Geist Pond	46	57.896	-112	45,567
Glory Hole	46	58.069	-112	45,450
H-10	46	59.961	-112	40,257
H-11	46	59.971	-112	41,480
H-12	47	0.887	-112	43,630
H-2	46	59.168	-112	39,499
H-20	46	59.691	-112	44,044
H-5	47	9.580	-112	30,100
H-30	47	1.763	-112	46,773
H-31	47	2.359	-112	48,026
H-4	47	8.288	-112	27,447
H-5	47	8.292	-112	30,674
H-5	47	7.501	-112	31,479
Lincoln Springs/Lone Point	46	57.598	-112	45,321
Mill Pond	46	59.418	-112	38,950
N Lincoln Gulch Dry Hydrant	46	58.130	-112	43,281
Reservoir Lake Dip	47	1.648	-112	48,631
Road Closure	47	2.549	-112	50,232
Silver King Dip	47	4.830	-112	32,693
Spike Camp	47	9.249	-112	30,400
Tamarack Lane	46	57.407	-112	45,255
Valley View Dry Hydrant	46	58.879	-112	42,268
Wilderness Dip	47	10.640	-112	33,281
Safety Zone	47	1.745	-112	48,762
Water Source	47	0.170	-112	38,508
Water Source	47	0.811	-112	43,225
Water Source	46	59.926	-112	40,943
Water Source	47	0.574	-112	45,203
Water Source	47	1.709	-112	48,728
Water Source	46	57.000	-112	40,109
Camp	47	9.257	-112	30,365
Lookout	47	1.092	-112	47,392

5,004 (52)
4,882 (52)
4,848 (52)
4,905 (52)
4,629 (52)
4,618 (52)
4,827 (52)
4,742 (52)