














112°52'0"W 112°50'30"W 112°49'0"W 112°47'30"W 112°46'0"W 112°44'30"W 112°43'0"W 112°41'30"W 112°40'0"W 112°38'30"W 112°37'0"W 112°35'30"W 112°34'0"W 112°32'30"W 112°31'0"W 112°29'30"W 112°28'0"W 112°26'30"W 112°25'0"W

# IAP Overview & Legend

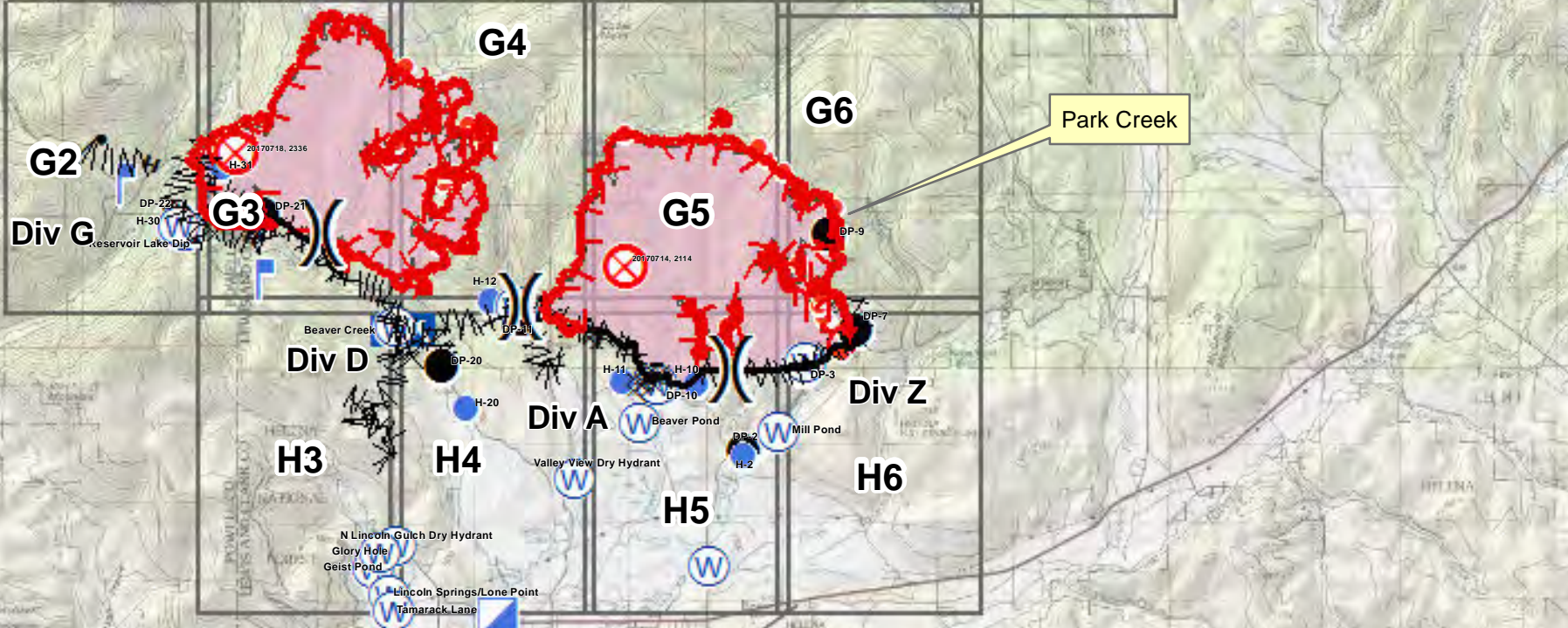
-  Uncontrolled Fire Edge
-  Completed Dozer Line
- H - H Hand Line
- R - R Road as Completed Line
-  Completed Fuel Break
-  Camp
-  Drop Point
-  Fire Origin
-  Helispot
-  Hot Spot
-  Lookout
-  Division
-  Mobile Weather Unit
-  Safety Zone
-  Water Source

Coordinate System: WGS 1984 Web Mercator Auxiliary Sphere  
Projection: Mercator Auxiliary Sphere  
Datum: WGS 1984

Arrastra Creek

Alice Creek

Park Creek



1:24,000

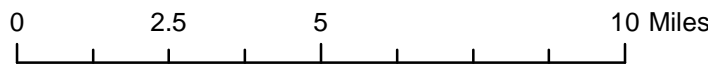
DMH



## Park Creek, Arrastra Creek & Alice Creek Fires

IAP Overview Map

8/10/17

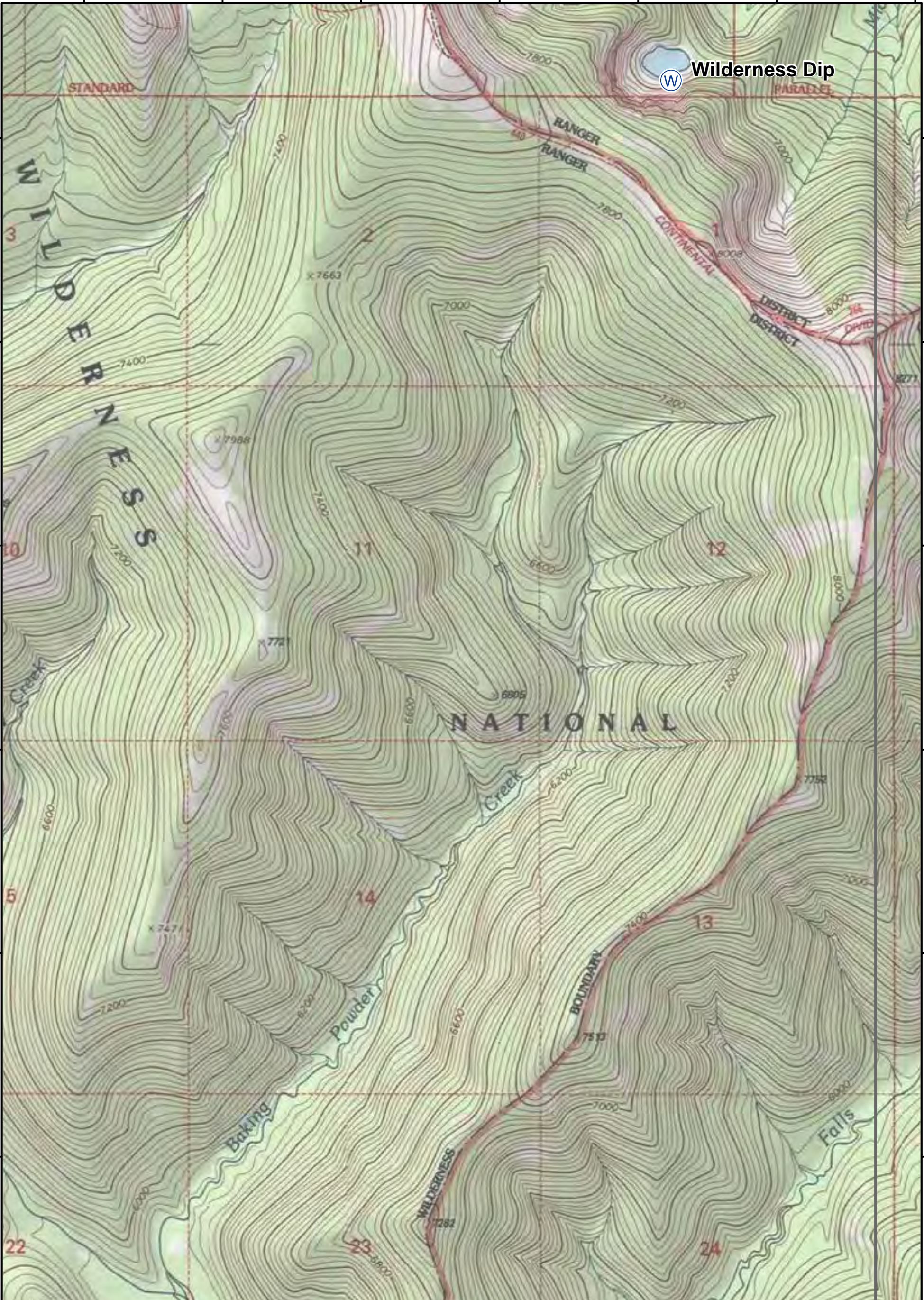


112°52'0"W 112°50'30"W 112°49'0"W 112°47'30"W 112°46'0"W 112°44'30"W 112°43'0"W 112°41'30"W 112°40'0"W 112°38'30"W 112°37'0"W 112°35'30"W 112°34'0"W 112°32'30"W 112°31'0"W 112°29'30"W 112°28'0"W 112°26'30"W 112°25'0"W

112°35'30"W 112°35'0"W 112°34'30"W 112°34'0"W 112°33'30"W 112°33'0"W 112°32'30"W

47°10'30"N  
47°10'0"N  
47°9'30"N  
47°9'0"N  
47°8'30"N  
47°8'0"N  
47°7'30"N

47°10'30"N  
47°10'0"N  
47°9'30"N  
47°9'0"N  
47°8'30"N  
47°8'0"N  
47°7'30"N

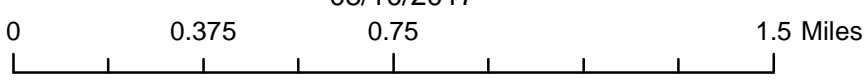


DMH



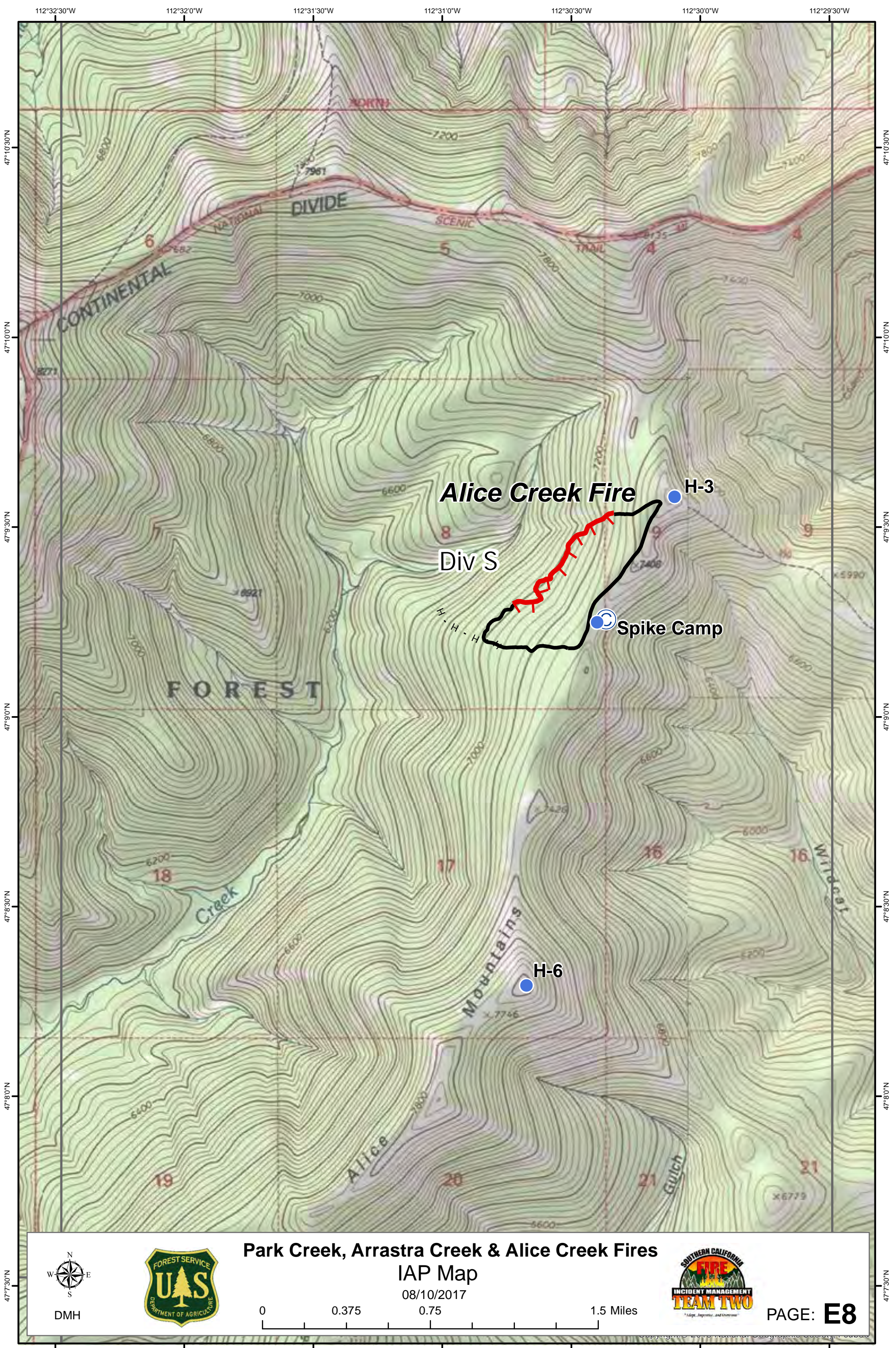
**Park Creek, Arrastra Creek & Alice Creek Fires**  
**IAP Map**

08/10/2017



PAGE: **E7**

112°35'30"W 112°35'0"W 112°34'30"W 112°34'0"W 112°33'30"W 112°33'0"W 112°32'30"W



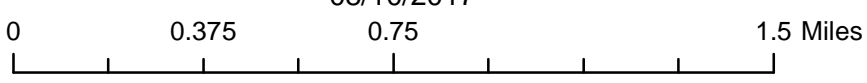
DMH



### Park Creek, Arrastra Creek & Alice Creek Fires

#### IAP Map

08/10/2017



PAGE: **E8**

112°32'30"W 112°32'0"W 112°31'30"W 112°31'0"W 112°30'30"W 112°30'0"W 112°29'30"W

47°7'30"N

47°8'00"N

47°8'30"N

47°9'00"N

47°9'30"N

47°10'00"N

47°10'30"N

47°7'30"N

47°8'00"N

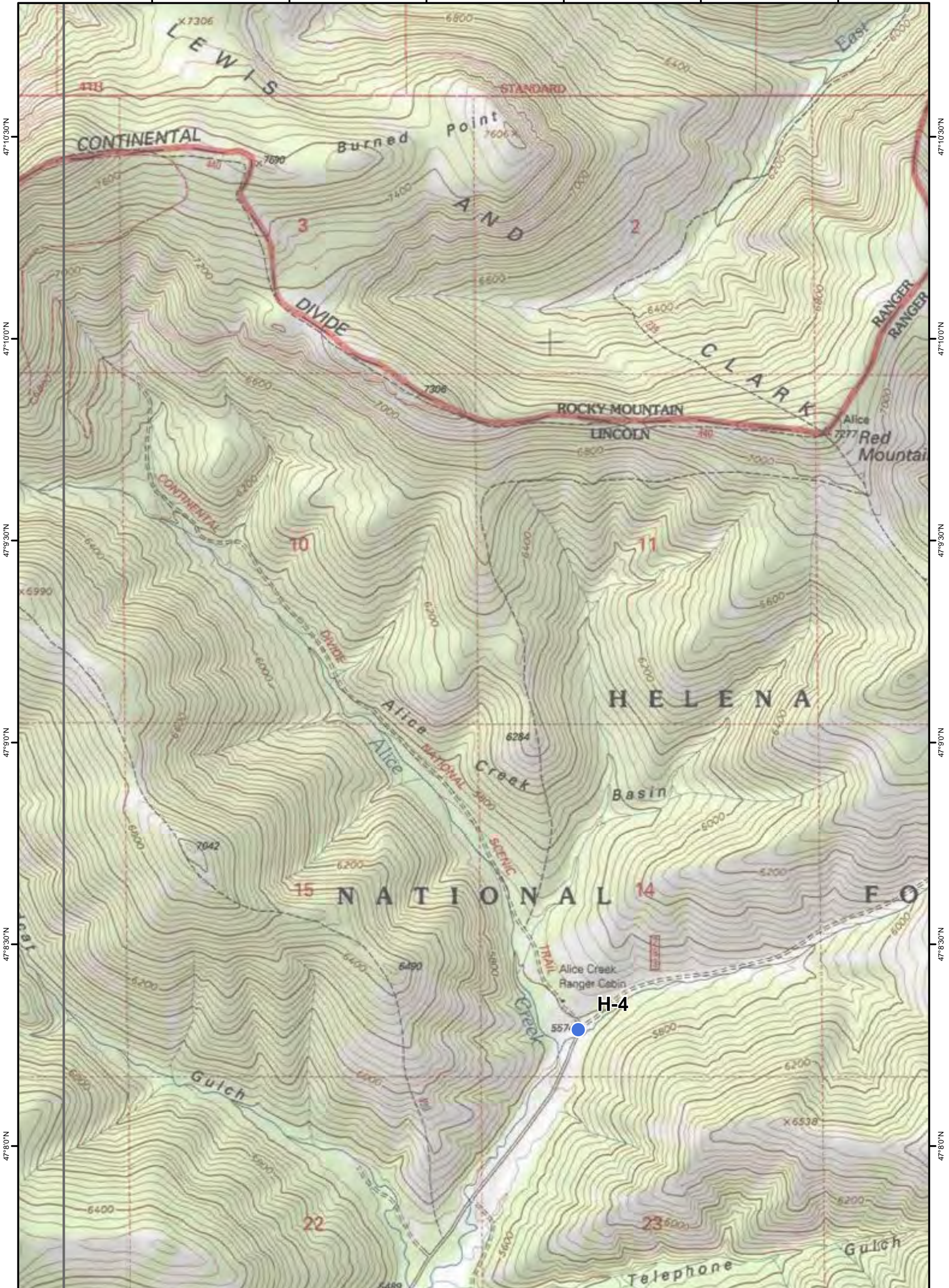
47°8'30"N


47°9'00"N

47°9'30"N


47°10'00"N

47°10'30"N

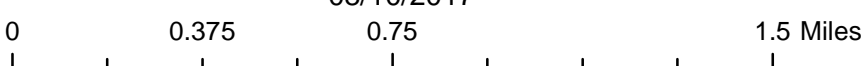





DMH



**Park Creek, Arrastra Creek & Alice Creek Fires**  
IAP Map  
08/10/2017

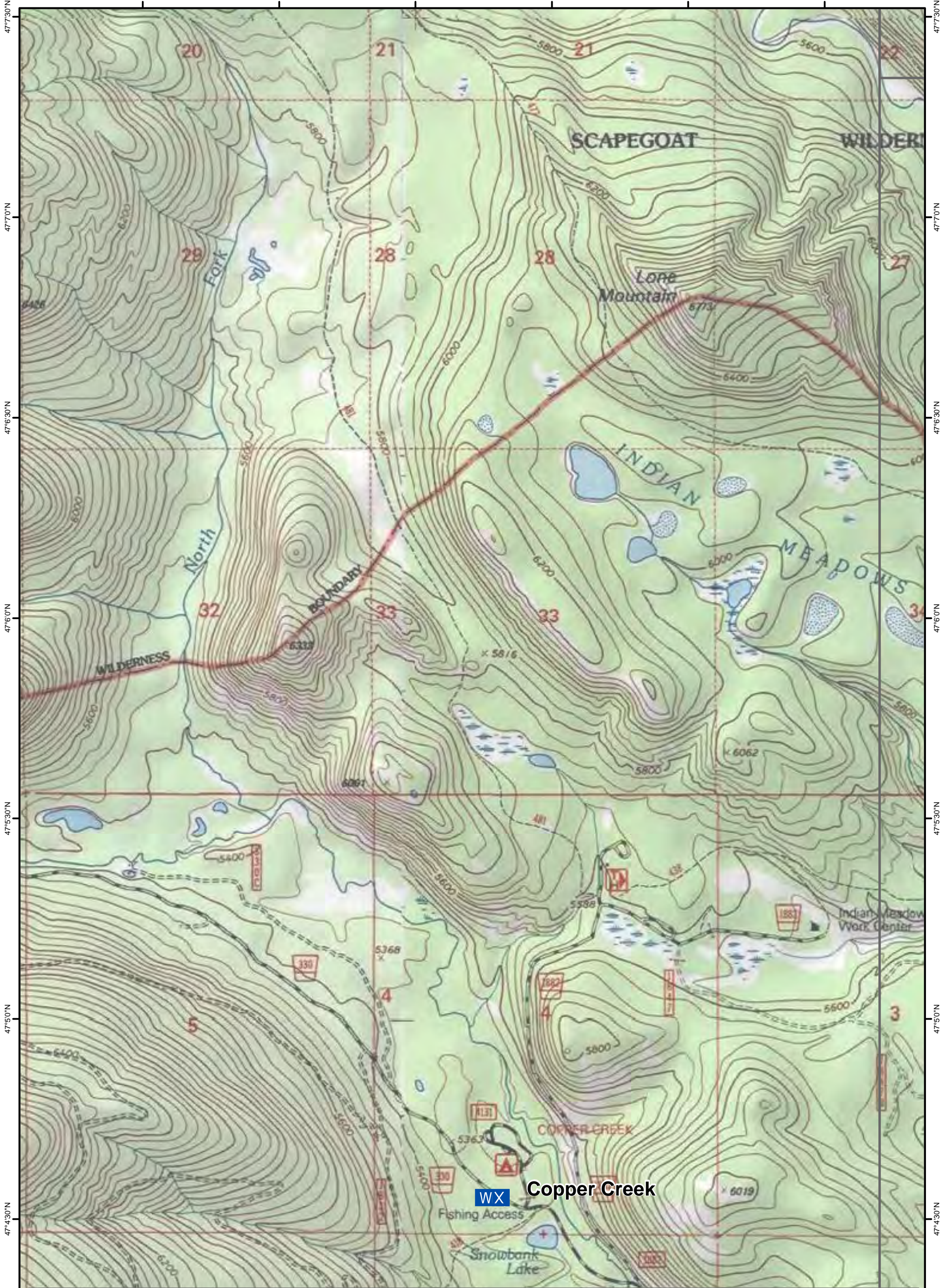


0 0.375 0.75 1.5 Miles



**PAGE: E9**

112°38'30"W 112°38'0"W 112°37'30"W 112°37'0"W 112°36'30"W 112°36'0"W



47°43'0"N 47°43'30"N 47°45'0"N 47°45'30"N 47°46'0"N 47°46'30"N 47°47'0"N 47°47'30"N

47°43'0"N 47°43'30"N 47°45'0"N 47°45'30"N 47°46'0"N 47°46'30"N 47°47'0"N 47°47'30"N



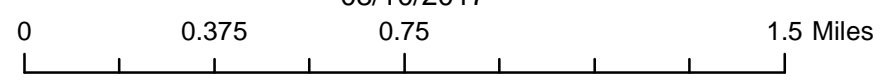
DMH



### Park Creek, Arrastra Creek & Alice Creek Fires

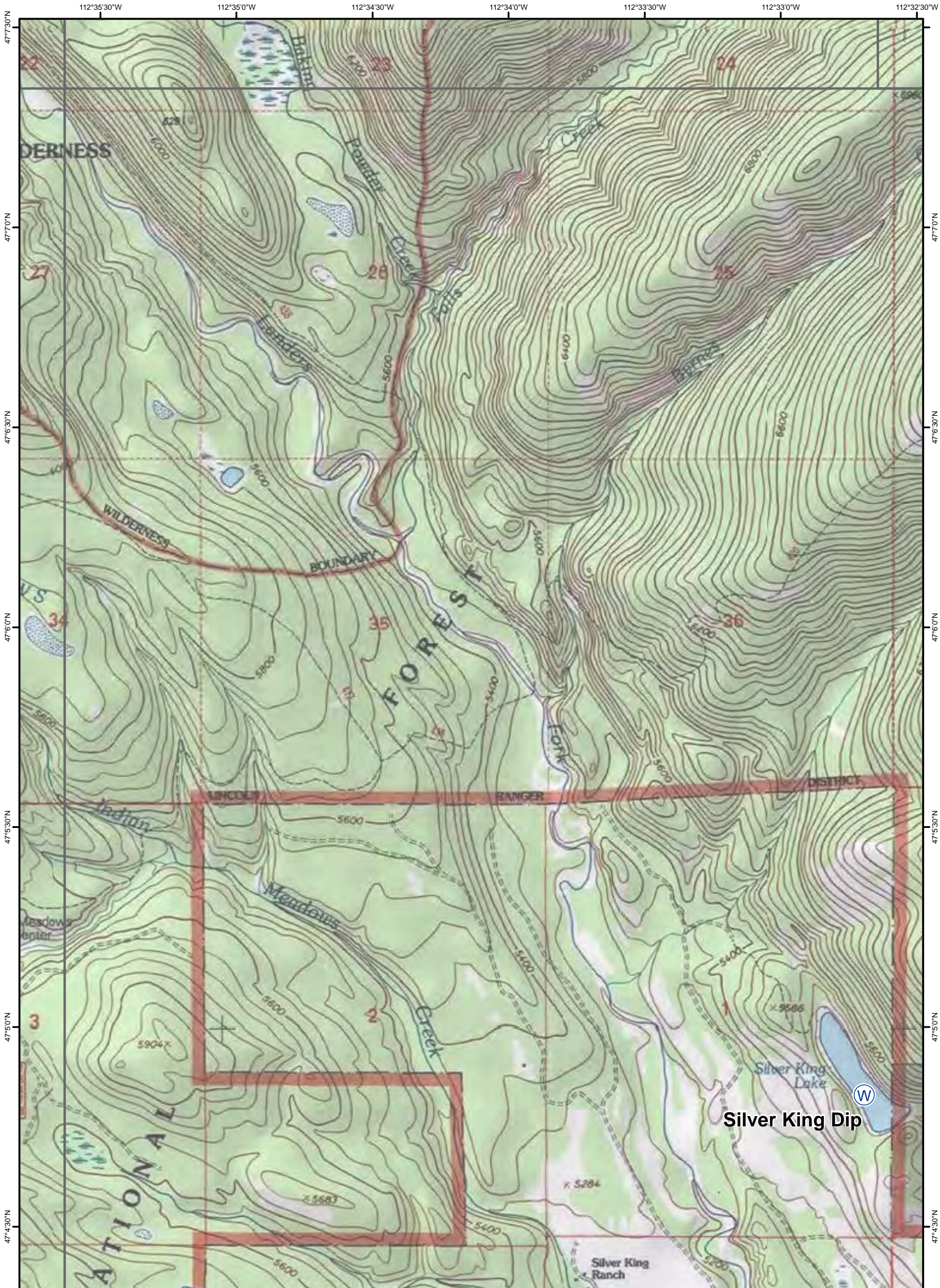
#### IAP Map

08/10/2017



PAGE: **F6**

112°38'30"W 112°38'0"W 112°37'30"W 112°37'0"W 112°36'30"W 112°36'0"W



47°43'0"N  
47°45'0"N  
47°50'0"N  
47°53'0"N  
47°56'0"N  
47°59'0"N  
47°7'0"N  
47°7'30"N

112°32'30"W  
112°33'0"W  
112°33'30"W  
112°34'0"W  
112°34'30"W  
112°35'0"W  
112°35'30"W



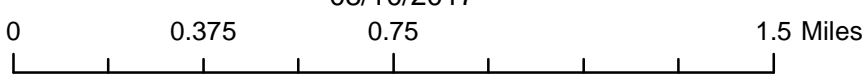
DMH



### Park Creek, Arrastra Creek & Alice Creek Fires

#### IAP Map

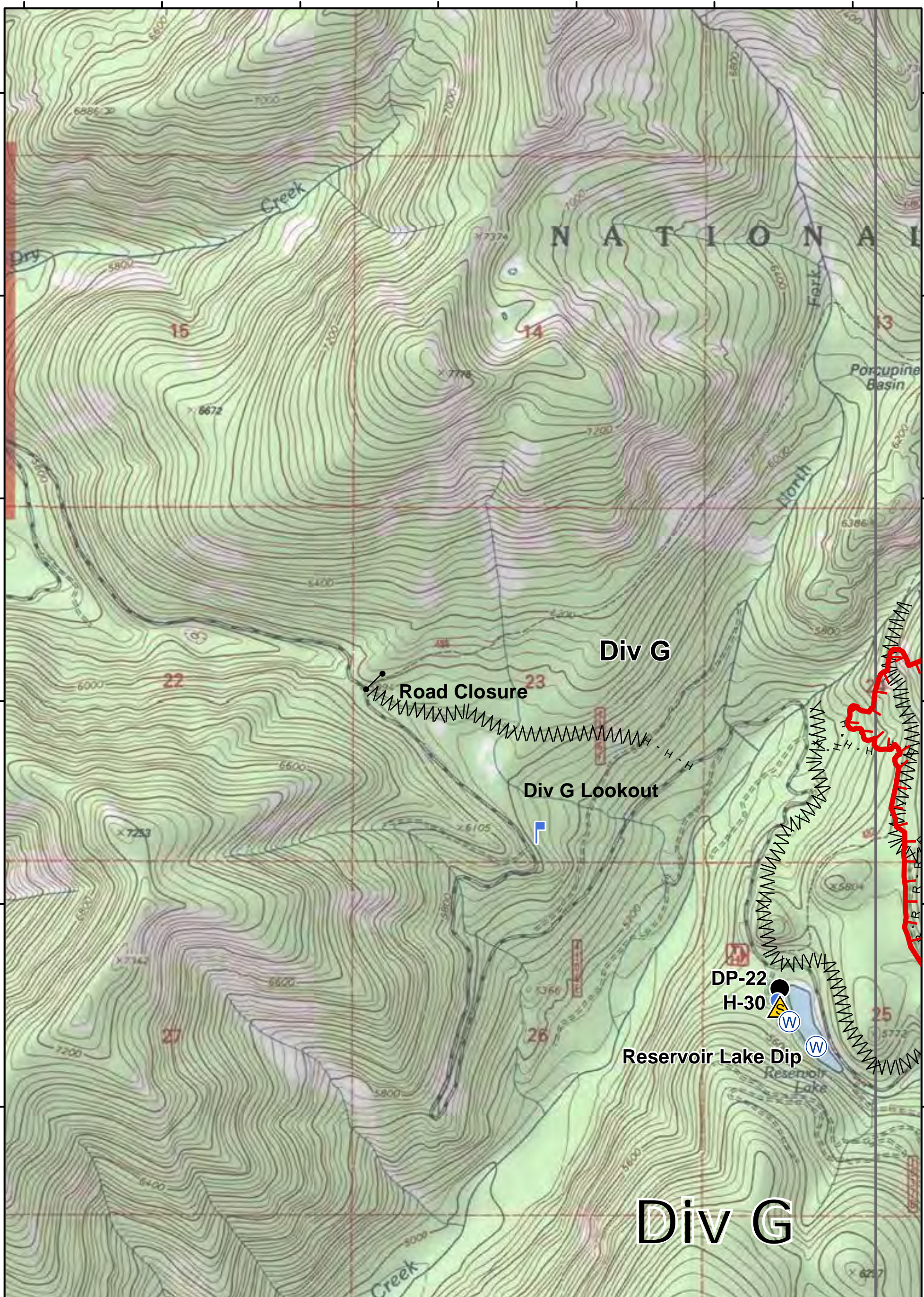
08/10/2017





PAGE: **F7**

112°35'30"W 112°35'0"W 112°34'30"W 112°34'0"W 112°33'30"W 112°33'0"W 112°32'30"W

112°51'30"W 112°51'0"W 112°50'30"W 112°50'0"W 112°49'30"W 112°49'0"W 112°48'30"W



**Park Creek, Arrastra Creek & Alice Creek Fires**  
**IAP Map**  
 08/10/2017

DMH   **PAGE: G2**

0 0.375 0.75 1.5 Miles

112°51'30"W 112°51'0"W 112°50'30"W 112°50'0"W 112°49'30"W 112°49'0"W 112°48'30"W

112°48'0"W

112°47'30"W

112°47'0"W

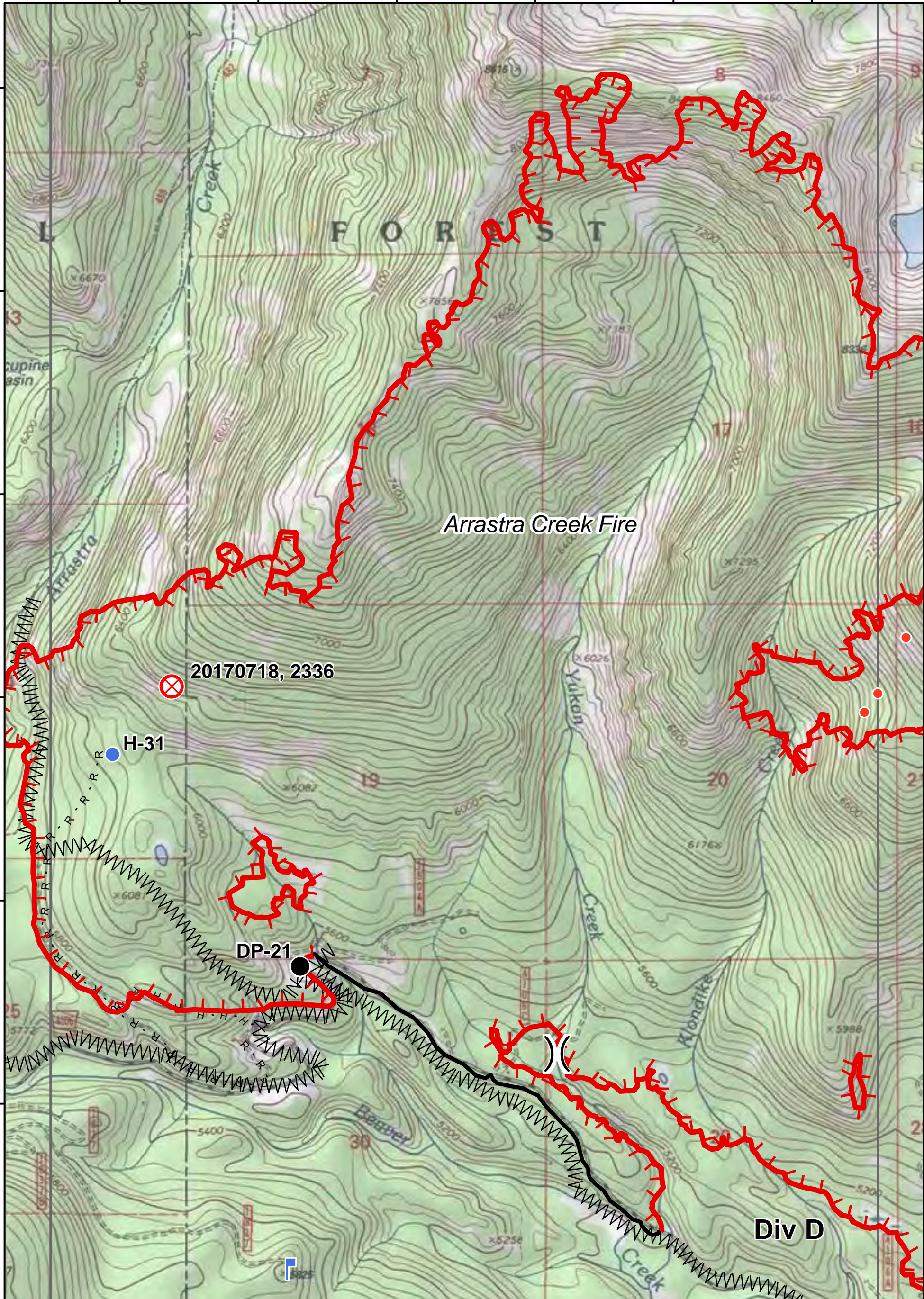
112°46'30"W

112°46'0"W

112°45'30"W

47°40'N  
47°33'N  
47°30'N  
47°23'N  
47°20'N  
47°13'N  
47°10'N

47°40'N  
47°33'N  
47°30'N  
47°23'N  
47°20'N  
47°13'N  
47°10'N



Arrastra Creek Fire

20170718, 2336

H-31

DP-21

Div D



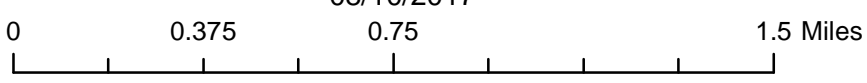
DMH



**Park Creek, Arrastra Creek & Alice Creek Fires**

IAP Map

08/10/2017



PAGE: **G3**

112°48'0"W

112°47'30"W

112°47'0"W

112°46'30"W

112°46'0"W

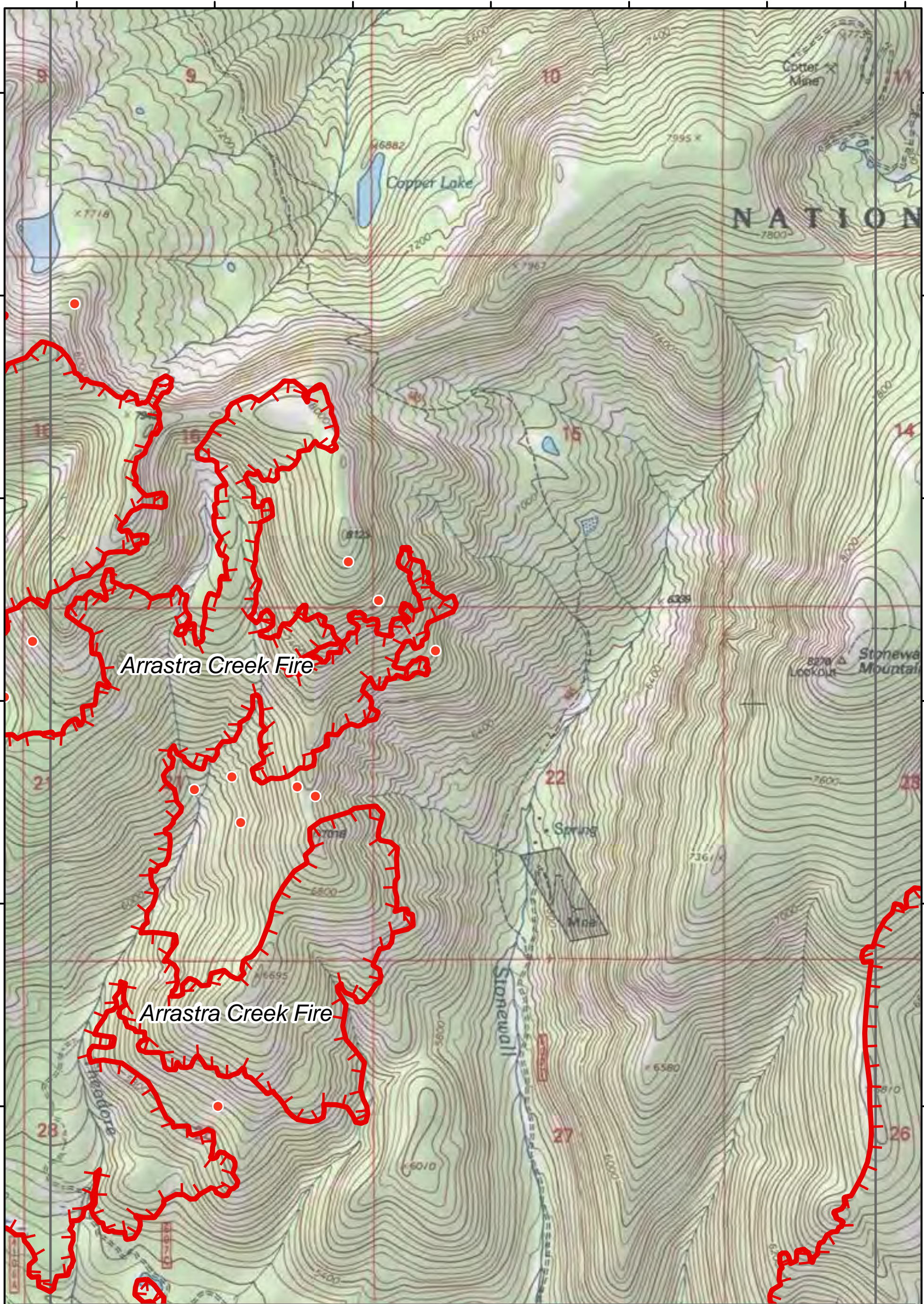
112°45'30"W



112°45'0"W 112°44'30"W 112°44'0"W 112°43'30"W 112°43'0"W 112°42'30"W 112°42'0"W

47°40'N  
47°33'N  
47°30'N  
47°23'N  
47°20'N  
47°13'N  
47°10'N

47°40'N  
47°33'N  
47°30'N  
47°23'N  
47°20'N  
47°13'N  
47°10'N



Arrastra Creek Fire

Arrastra Creek Fire



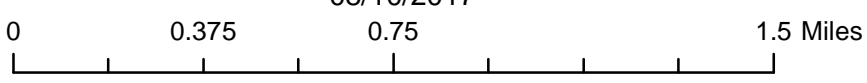
DMH



### Park Creek, Arrastra Creek & Alice Creek Fires

#### IAP Map

08/10/2017



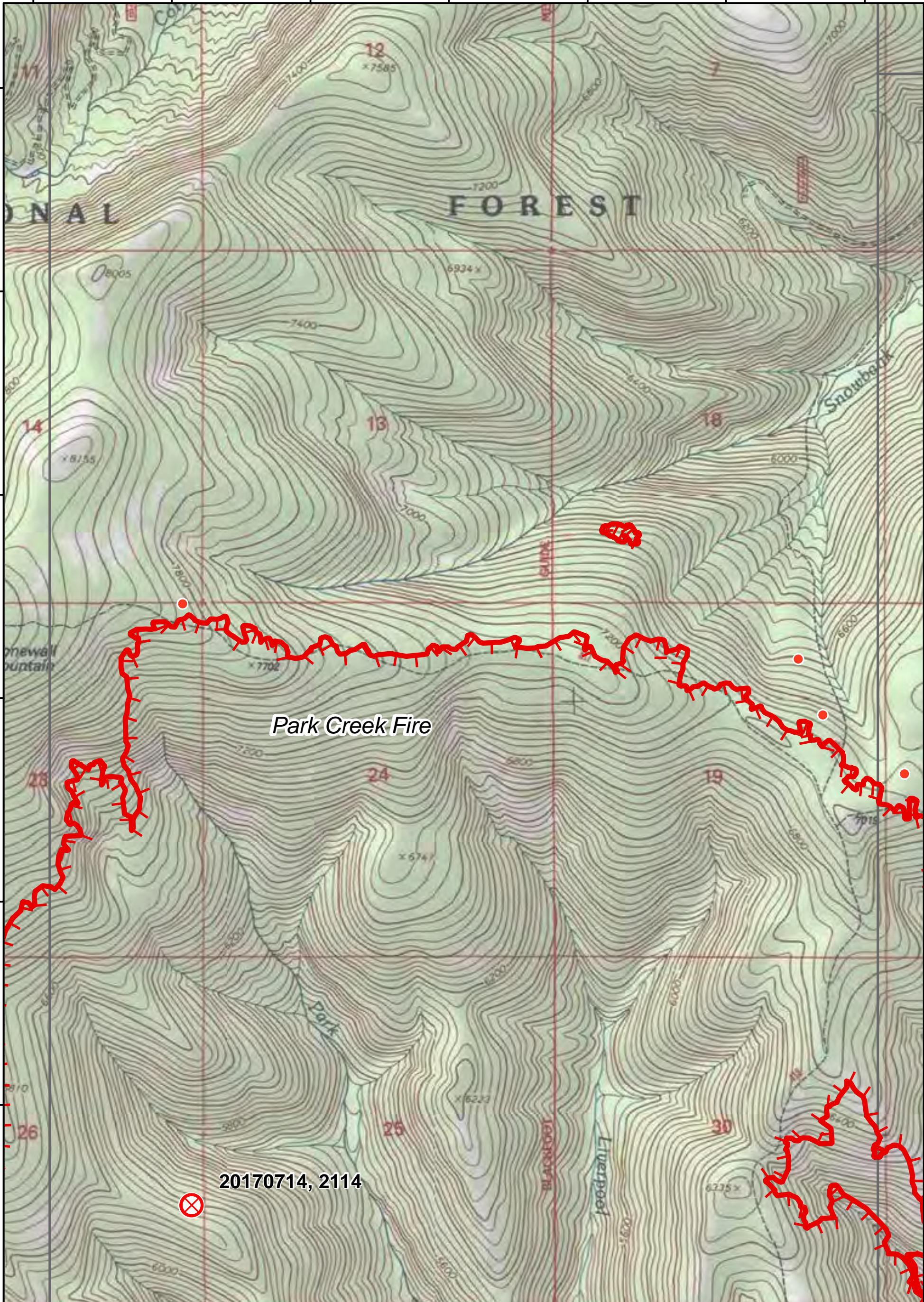
PAGE: **G4**

112°45'0"W 112°44'30"W 112°44'0"W 112°43'30"W 112°43'0"W 112°42'30"W 112°42'0"W

112°42'0"W 112°41'30"W 112°41'0"W 112°40'30"W 112°40'0"W 112°39'30"W 112°39'0"W

47°40'N  
47°33'N  
47°30'N  
47°23'N  
47°20'N  
47°13'N  
47°10'N

47°40'N  
47°33'N  
47°30'N  
47°23'N  
47°20'N  
47°13'N  
47°10'N



Park Creek Fire

20170714, 2114

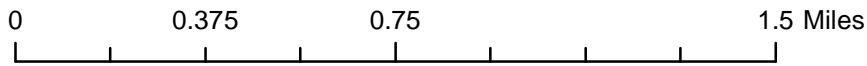


DMH



### Park Creek, Arrastra Creek & Alice Creek Fires IAP Map

08/10/2017



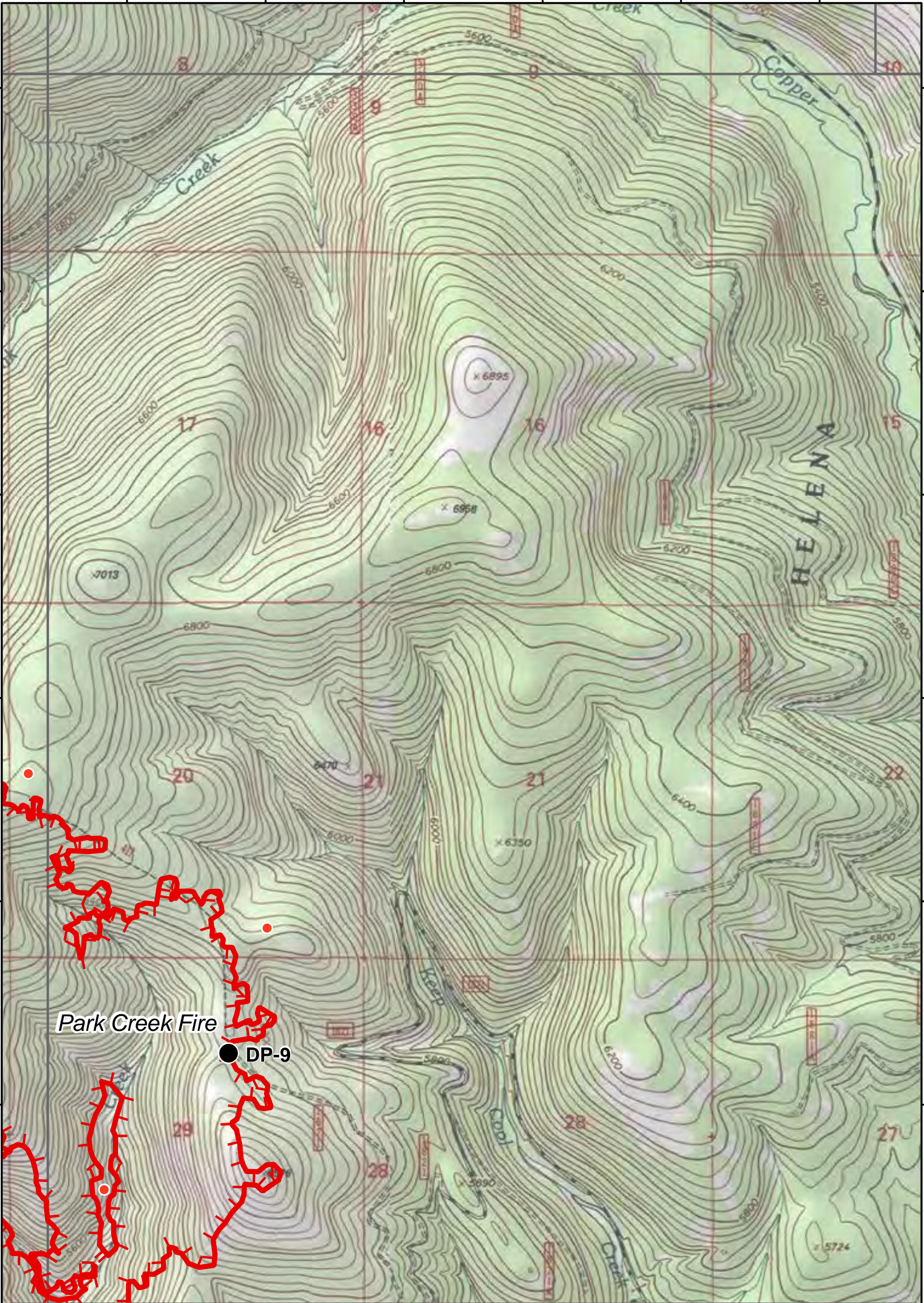
PAGE: **G5**

112°42'0"W 112°41'30"W 112°41'0"W 112°40'30"W 112°40'0"W 112°39'30"W 112°39'0"W

112°38'30"W 112°38'0"W 112°37'30"W 112°37'0"W 112°36'30"W 112°36'0"W

47°40'N  
47°33'N  
47°30'N  
47°23'N  
47°20'N  
47°13'N  
47°10'N

47°40'N  
47°33'N  
47°30'N  
47°23'N  
47°20'N  
47°13'N  
47°10'N



Park Creek Fire

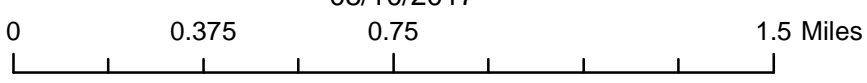
● DP-9

**Park Creek, Arrastra Creek & Alice Creek Fires**  
**IAP Map**

08/10/2017



DMH



PAGE: **G6**

112°38'30"W 112°38'0"W 112°37'30"W 112°37'0"W 112°36'30"W 112°36'0"W

112°48'0"W

112°47'30"W

112°47'0"W

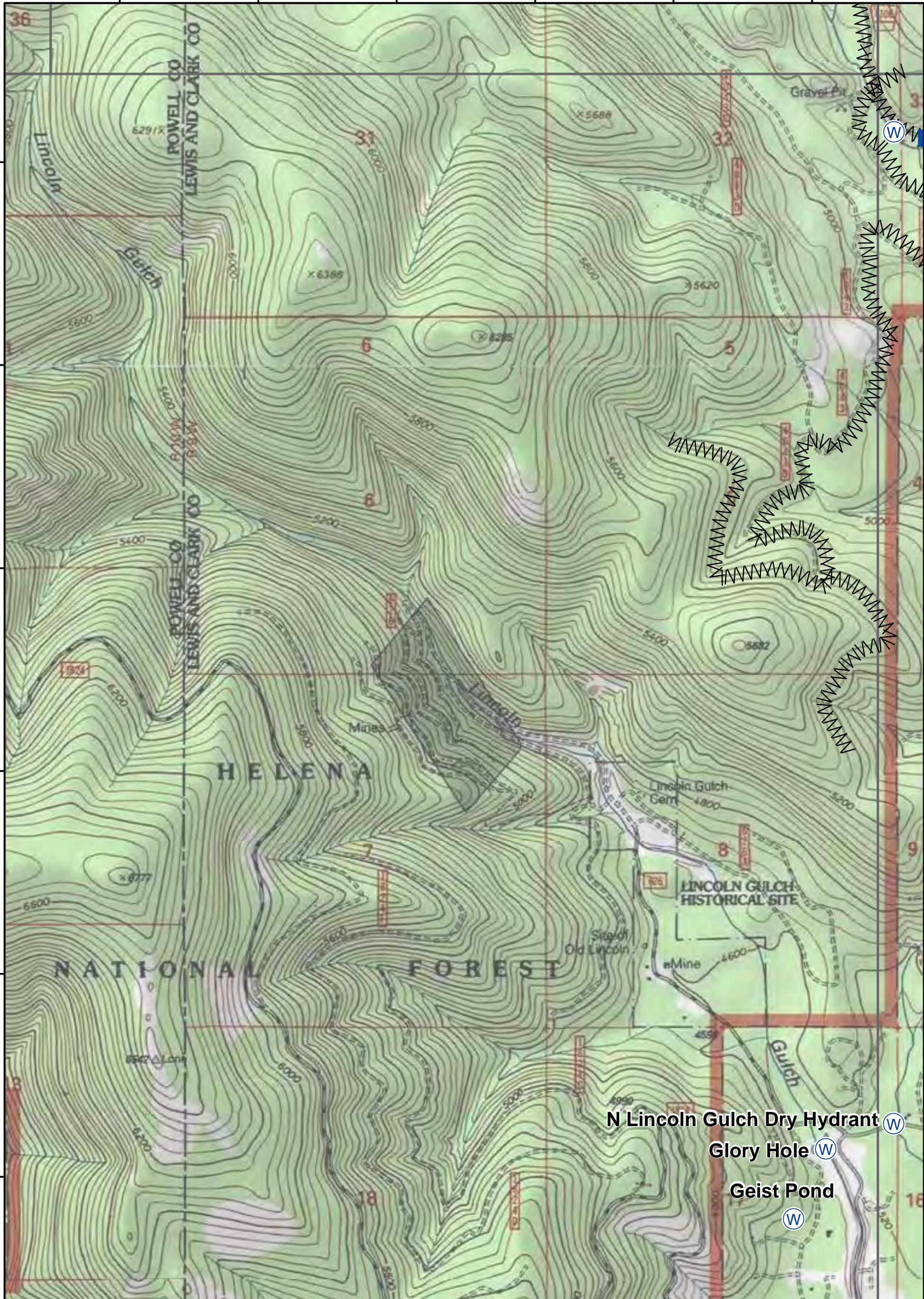
112°46'30"W

112°46'0"W

112°45'30"W

47°0'30"N  
47°0'0"N  
46°59'30"N  
46°59'0"N  
46°58'30"N  
46°58'0"N  
46°57'30"N

47°0'30"N  
47°0'0"N  
46°59'30"N  
46°59'0"N  
46°58'30"N  
46°58'0"N  
46°57'30"N



N Lincoln Gulch Dry Hydrant (W)

Glory Hole (W)

Geist Pond (W)



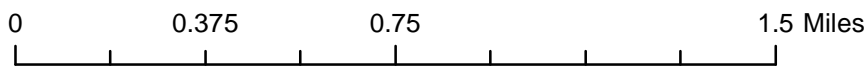
DMH



### Park Creek, Arrastra Creek & Alice Creek Fires

### IAP Map

08/10/2017



PAGE: **H3**

112°48'0"W

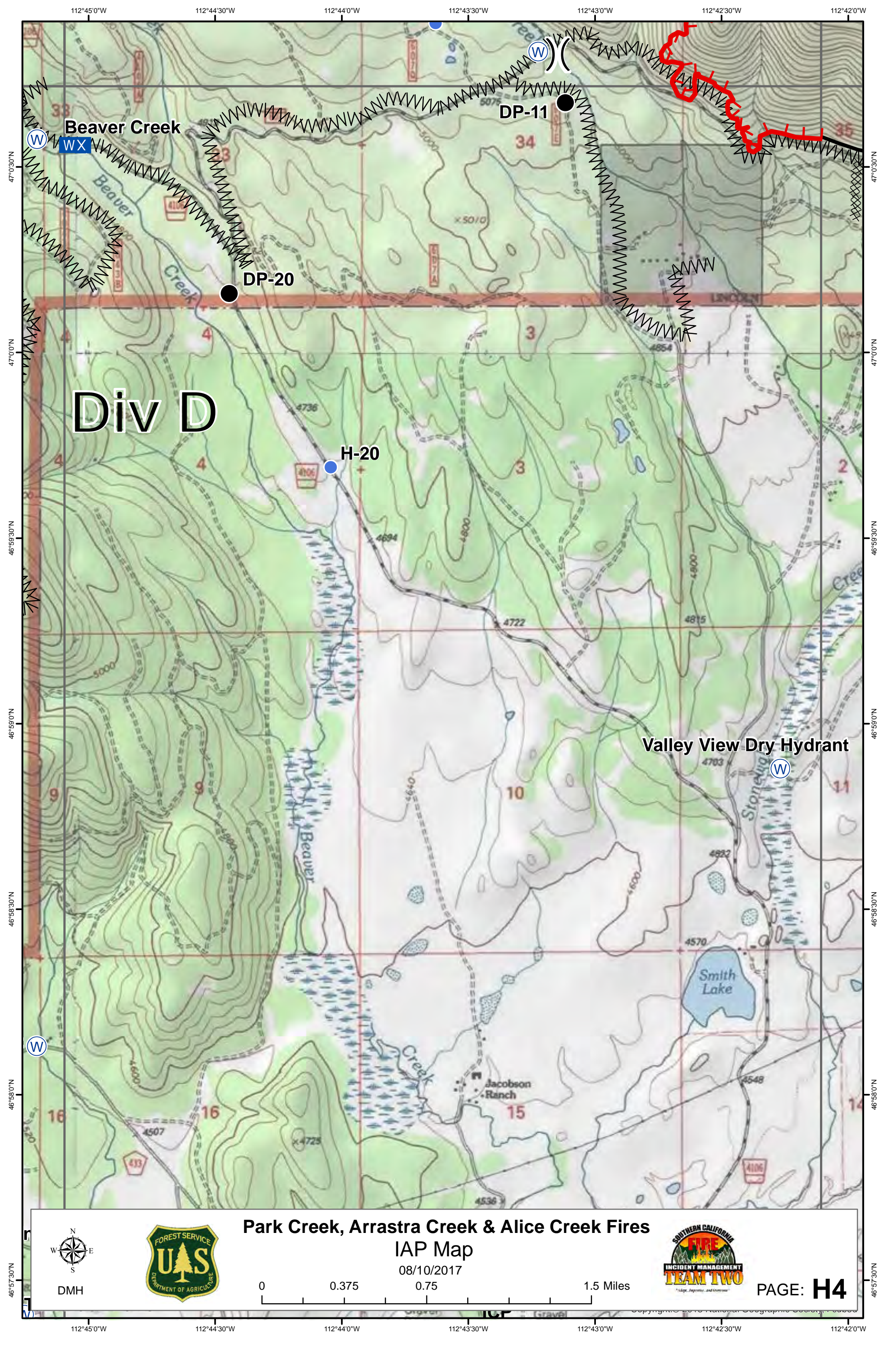
112°47'30"W

112°47'0"W

112°46'30"W

112°46'0"W

112°45'30"W



Beaver Creek

DP-11

DP-20

Div D

H-20

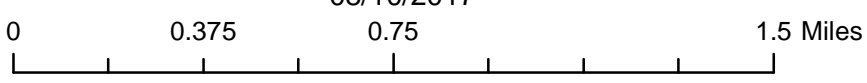
Valley View Dry Hydrant

Smith Lake

Jacobson Ranch

Park Creek, Arrastra Creek & Alice Creek Fires  
IAP Map

08/10/2017

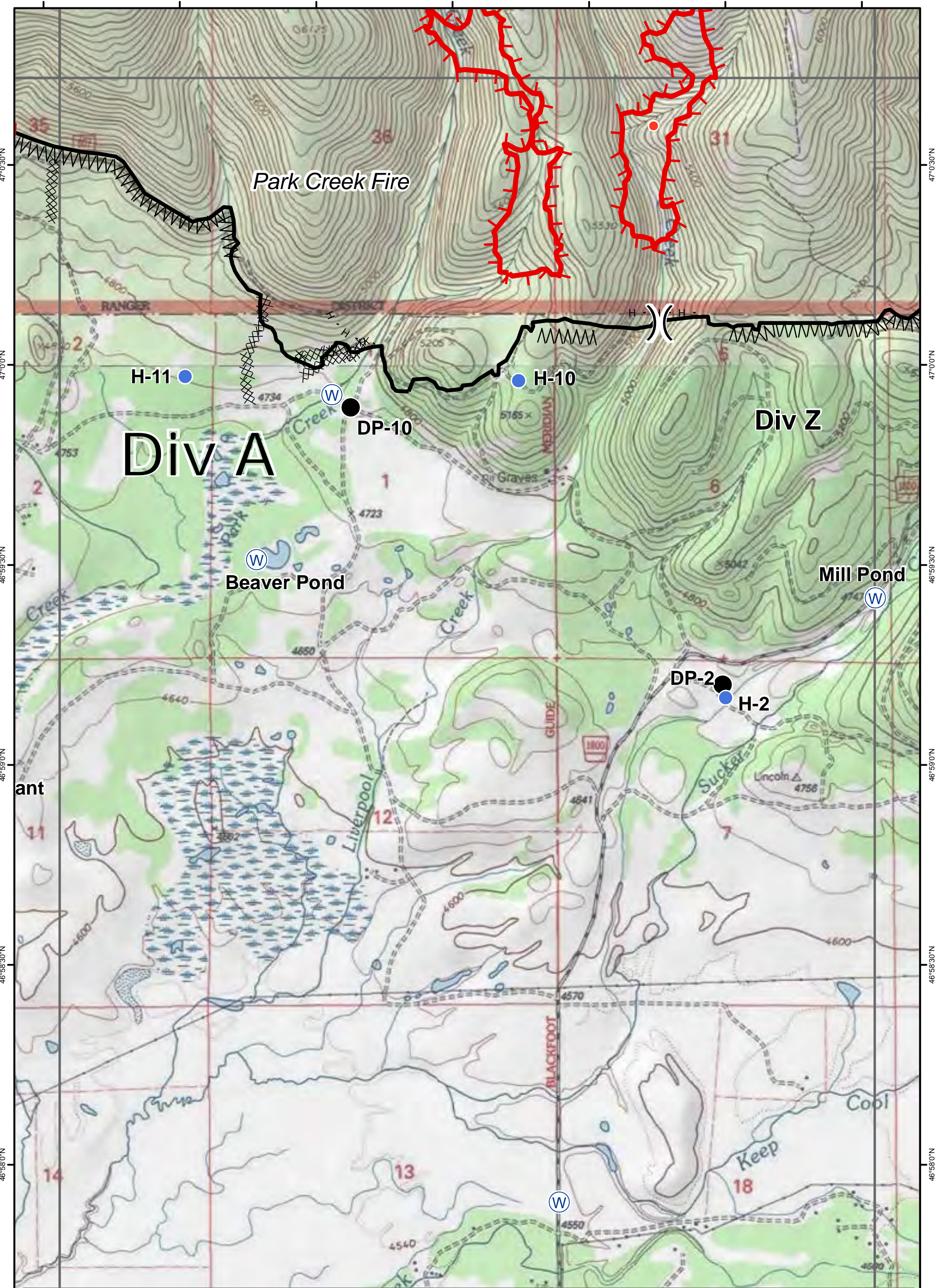


PAGE: H4



DMH

112°45'0"W 112°44'30"W 112°44'0"W 112°43'30"W 112°43'0"W 112°42'30"W 112°42'0"W  
47°0'30"N 47°0'0"N 46°59'30"N 46°59'0"N 46°58'30"N 46°58'0"N 46°57'30"N

112°42'0"W 112°41'30"W 112°41'0"W 112°40'30"W 112°40'0"W 112°39'30"W 112°39'0"W



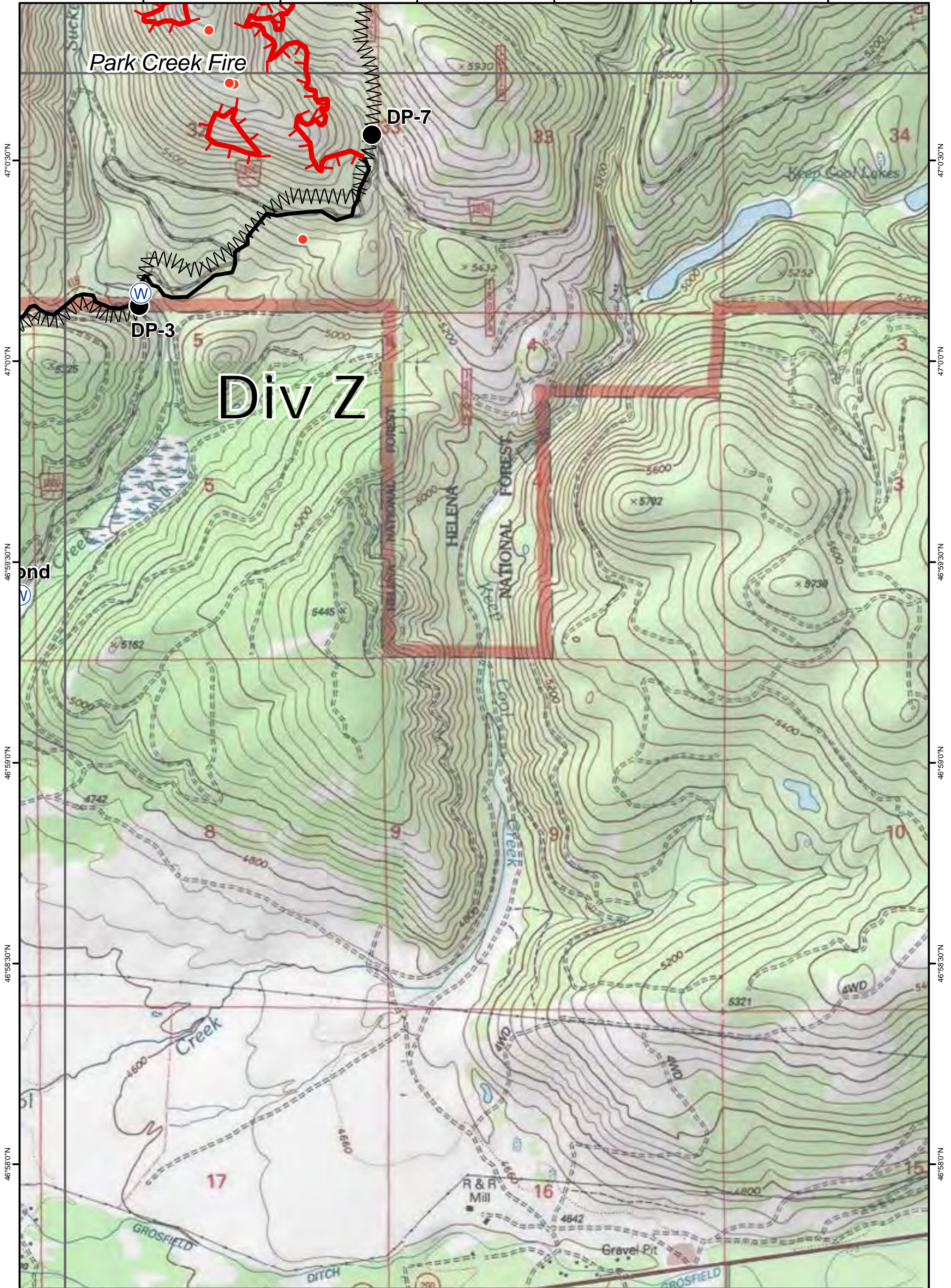
**Park Creek, Arrastra Creek & Alice Creek Fires**  
**IAP Map**  
 08/10/2017

DMH   **PAGE: H5**

0 0.375 0.75 1.5 Miles

112°42'0"W 112°41'30"W 112°41'0"W 112°40'30"W 112°40'0"W 112°39'30"W 112°39'0"W

112°38'30"W 112°38'0"W 112°37'30"W 112°37'0"W 112°36'30"W 112°36'0"W



47°0'30"N  
47°0'0"N  
46°59'30"N  
46°59'0"N  
46°58'30"N  
46°58'0"N  
46°57'30"N

47°0'30"N  
47°0'0"N  
46°59'30"N  
46°59'0"N  
46°58'30"N  
46°58'0"N  
46°57'30"N

Div Z

Park Creek Fire

DP-7

DP-3

HELENA NATIONAL FOREST

HELENA NATIONAL FOREST

Creek

GROSFIELD

DITCH

R & R Mill

Gravel Pit



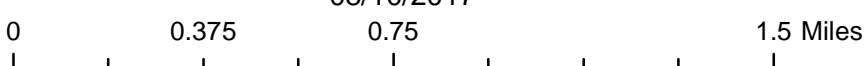
DMH



### Park Creek, Arrastra Creek & Alice Creek Fires

#### IAP Map

08/10/2017



PAGE: **H6**

112°38'30"W 112°38'0"W 112°37'30"W 112°37'0"W 112°36'30"W 112°36'0"W