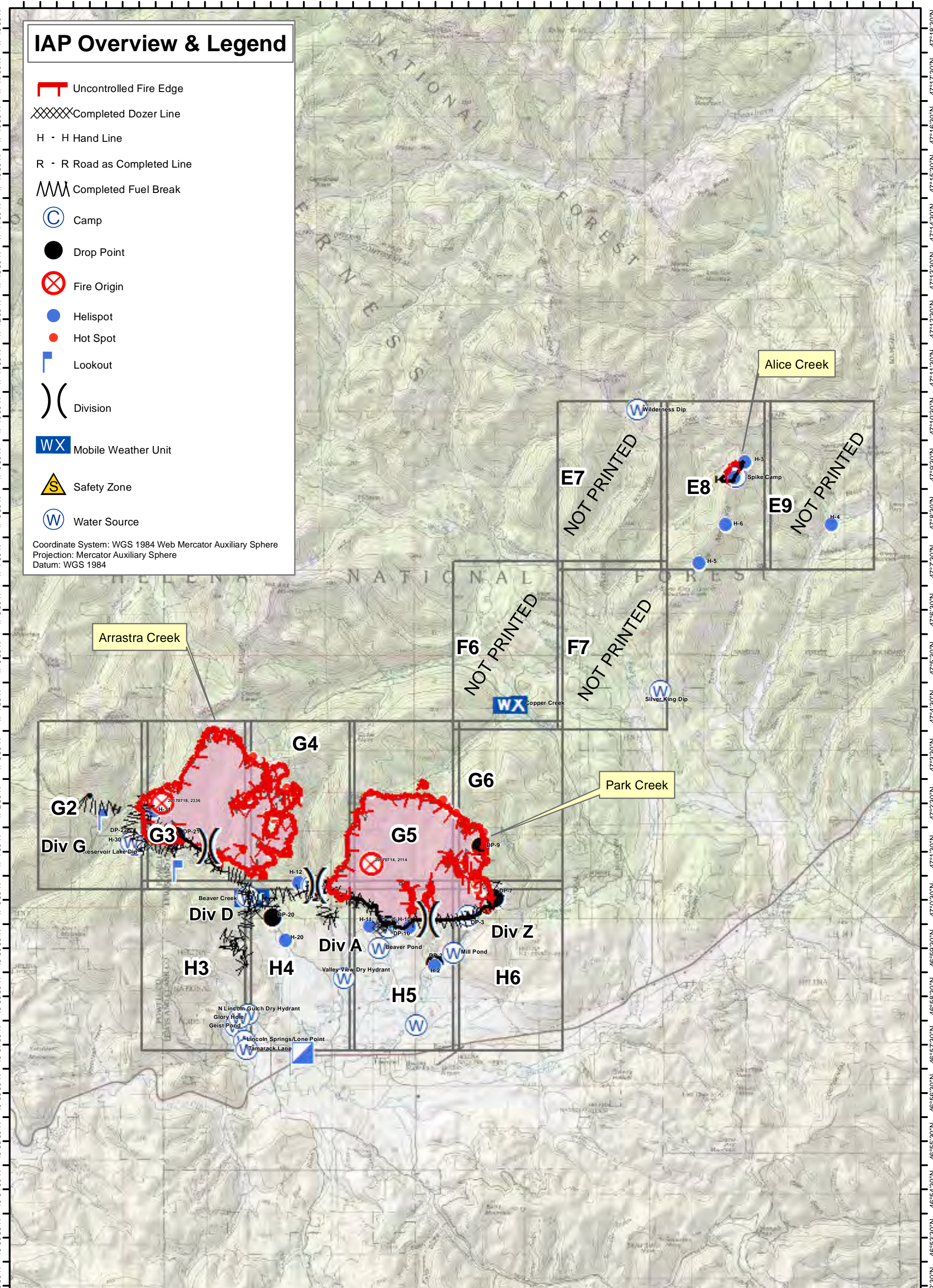















112°52'0"W 112°50'30"W 112°49'0"W 112°47'30"W 112°46'0"W 112°44'30"W 112°43'0"W 112°41'30"W 112°40'0"W 112°38'30"W 112°37'0"W 112°35'30"W 112°34'0"W 112°32'30"W 112°31'0"W 112°29'30"W 112°28'0"W 112°26'30"W 112°25'0"W



# IAP Overview & Legend

-  Uncontrolled Fire Edge
-  Completed Dozer Line
- H - H Hand Line
- R - R Road as Completed Line
-  Completed Fuel Break
-  Camp
-  Drop Point
-  Fire Origin
-  Helispot
-  Hot Spot
-  Lookout
-  Division
-  Mobile Weather Unit
-  Safety Zone
-  Water Source

Coordinate System: WGS 1984 Web Mercator Auxiliary Sphere  
Projection: Mercator Auxiliary Sphere  
Datum: WGS 1984

Arrastra Creek

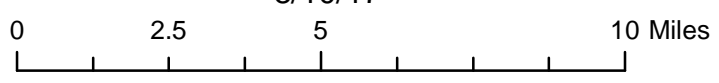
Alice Creek

Park Creek

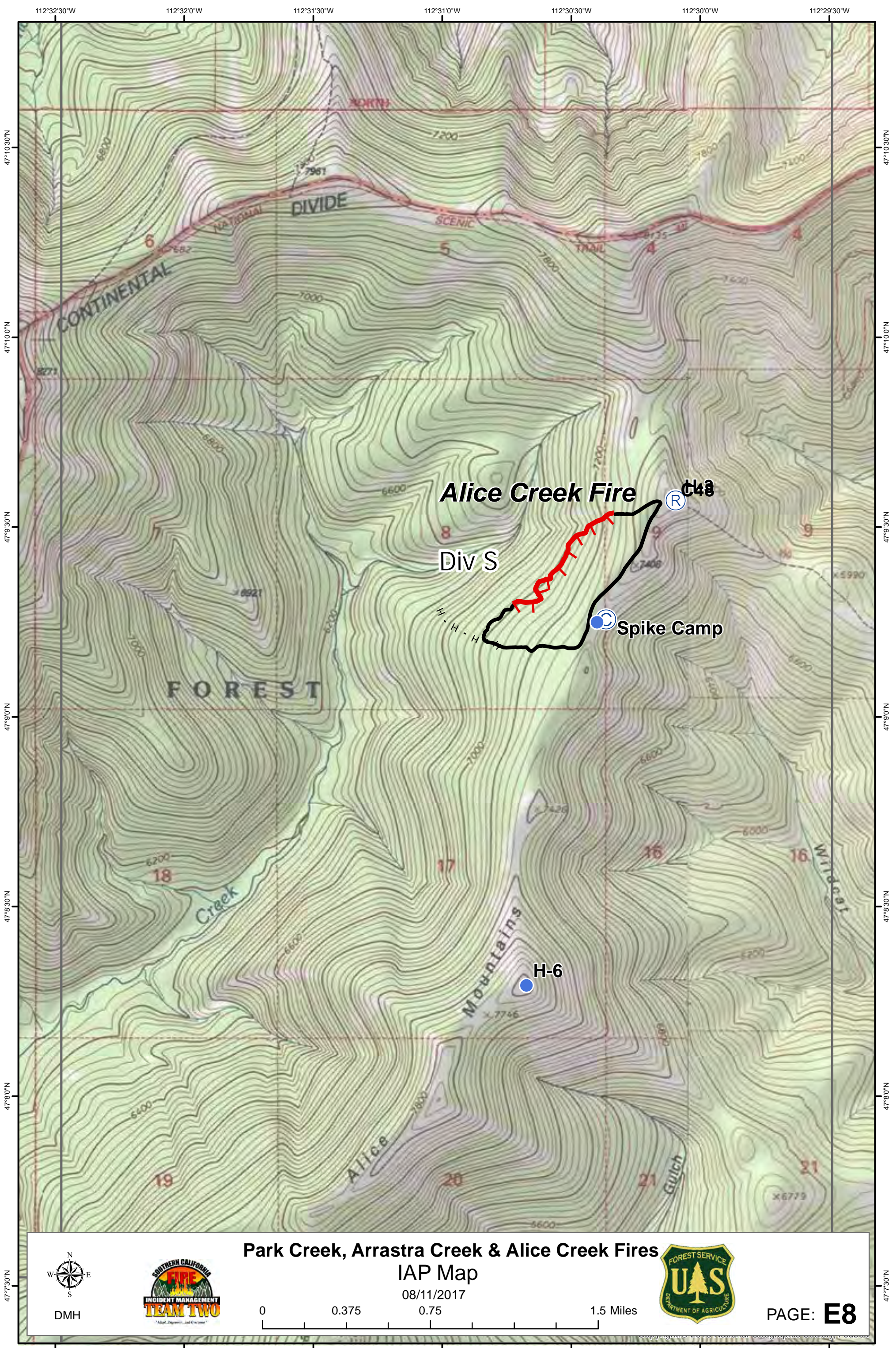
  
1:24,000  
DMH



## Park Creek, Arrastra Creek & Alice Creek Fires IAP Overview Map 8/10/17



112°52'0"W 112°50'30"W 112°49'0"W 112°47'30"W 112°46'0"W 112°44'30"W 112°43'0"W 112°41'30"W 112°40'0"W 112°38'30"W 112°37'0"W 112°35'30"W 112°34'0"W 112°32'30"W 112°31'0"W 112°29'30"W 112°28'0"W 112°26'30"W 112°25'0"W

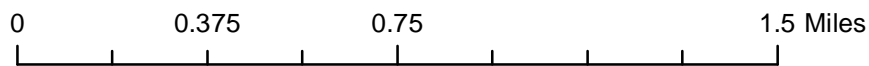


**Park Creek, Arrastra Creek & Alice Creek Fires**  
**IAP Map**

08/11/2017



DMH

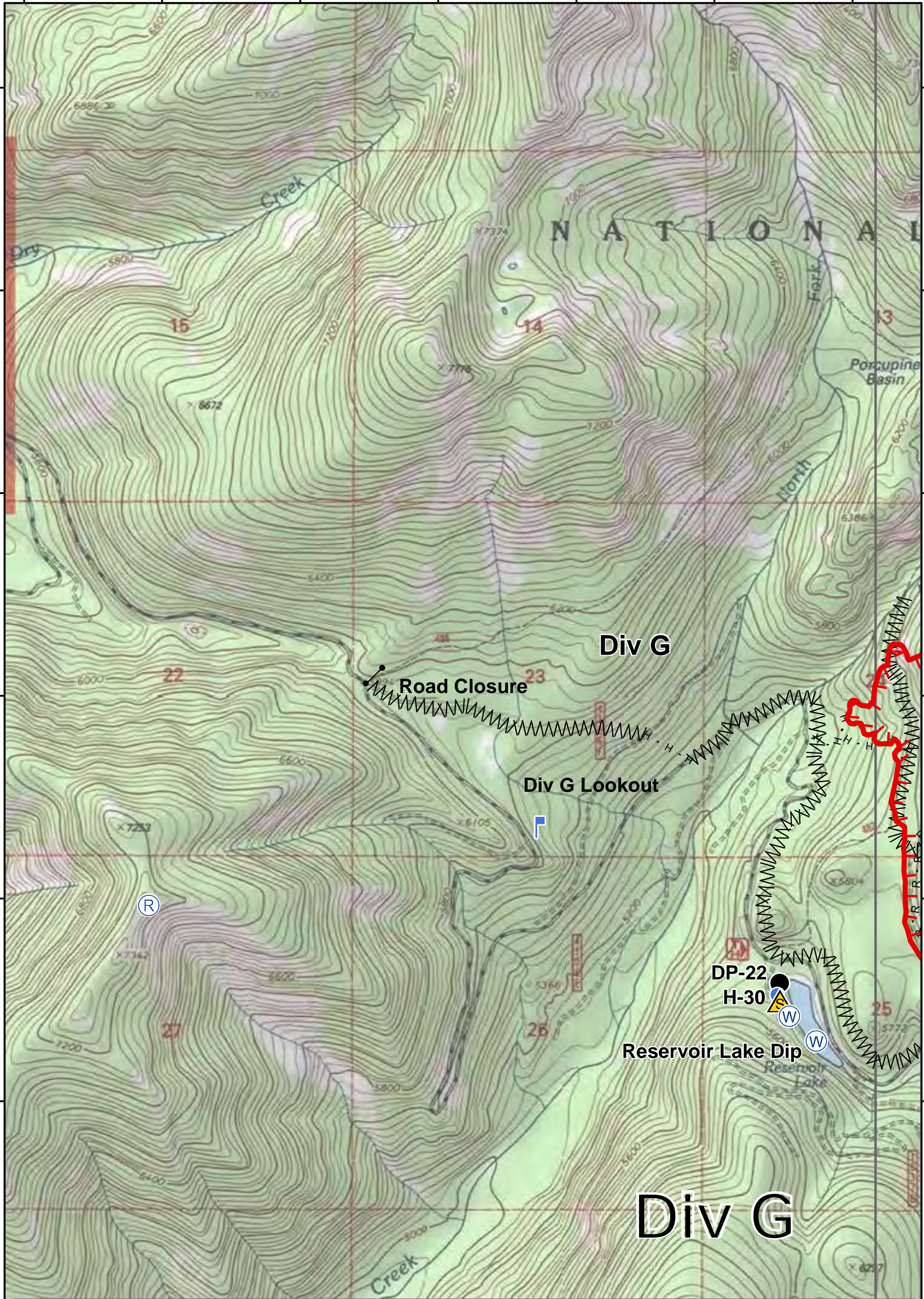


PAGE: **E8**

112°51'30"W 112°51'0"W 112°50'30"W 112°50'0"W 112°49'30"W 112°49'0"W 112°48'30"W

47°40'N  
47°33'N  
47°30'N  
47°23'N  
47°20'N  
47°13'N  
47°10'N

47°40'N  
47°33'N  
47°30'N  
47°23'N  
47°20'N  
47°13'N  
47°10'N

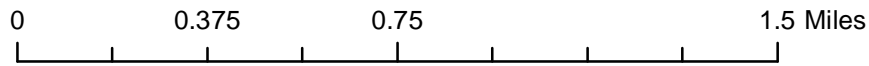


**Park Creek, Arrastra Creek & Alice Creek Fires**  
**IAP Map**

08/11/2017



DMH



PAGE: **G2**

112°51'30"W 112°51'0"W 112°50'30"W 112°50'0"W 112°49'30"W 112°49'0"W 112°48'30"W

112°48'0"W

112°47'30"W

112°47'0"W

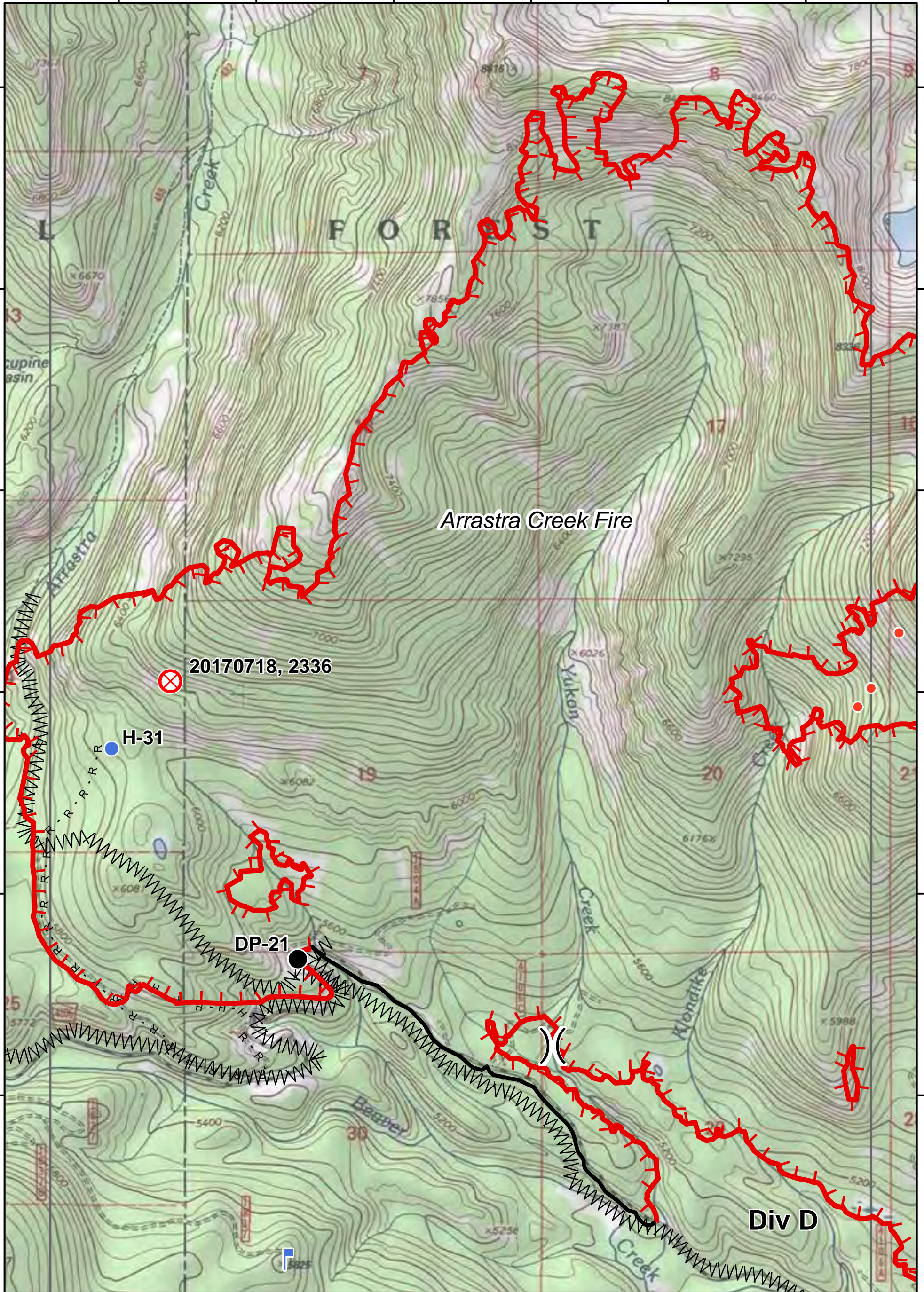
112°46'30"W

112°46'0"W

112°45'30"W

47°40'N  
47°33'0"N  
47°30'0"N  
47°23'0"N  
47°20'0"N  
47°13'0"N  
47°10'N

47°40'N  
47°33'0"N  
47°30'0"N  
47°23'0"N  
47°20'0"N  
47°13'0"N  
47°10'N



Arrastra Creek Fire

20170718, 2336

H-31

DP-21

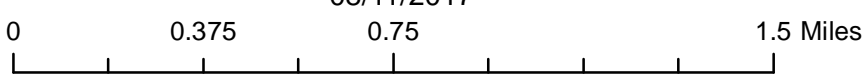
Div D

Park Creek, Arrastra Creek & Alice Creek Fires  
IAP Map

08/11/2017



DMH



PAGE: G3

112°48'0"W

112°47'30"W

112°47'0"W

112°46'30"W

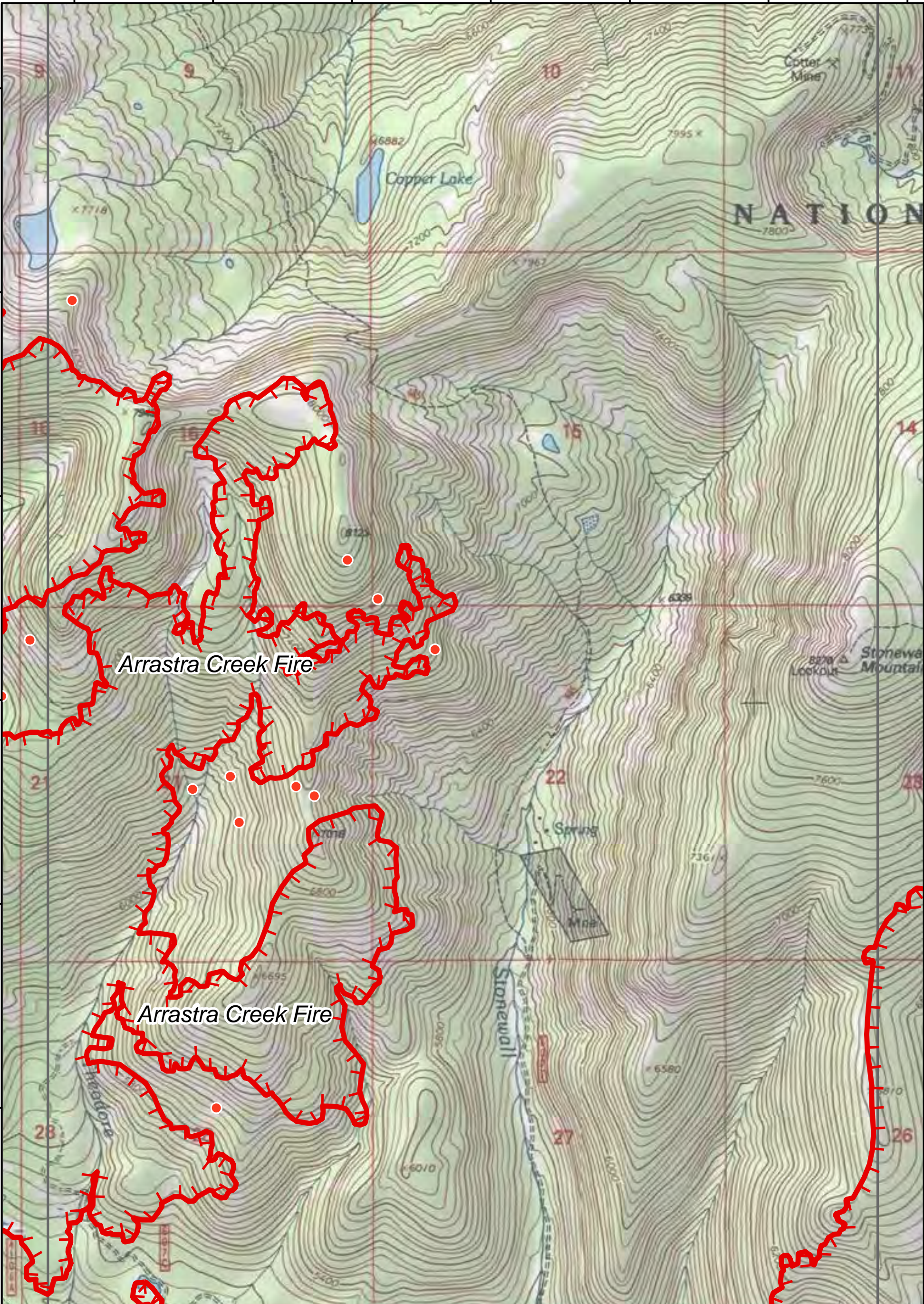
112°46'0"W

112°45'30"W

112°45'0"W 112°44'30"W 112°44'0"W 112°43'30"W 112°43'0"W 112°42'30"W 112°42'0"W

47°40'N  
47°33'N  
47°30'N  
47°23'N  
47°20'N  
47°13'N  
47°10'N

47°40'N  
47°33'N  
47°30'N  
47°23'N  
47°20'N  
47°13'N  
47°10'N



Arrastra Creek Fire

Arrastra Creek Fire

### Park Creek, Arrastra Creek & Alice Creek Fires

#### IAP Map

08/11/2017



DMH



0 0.375 0.75 1.5 Miles



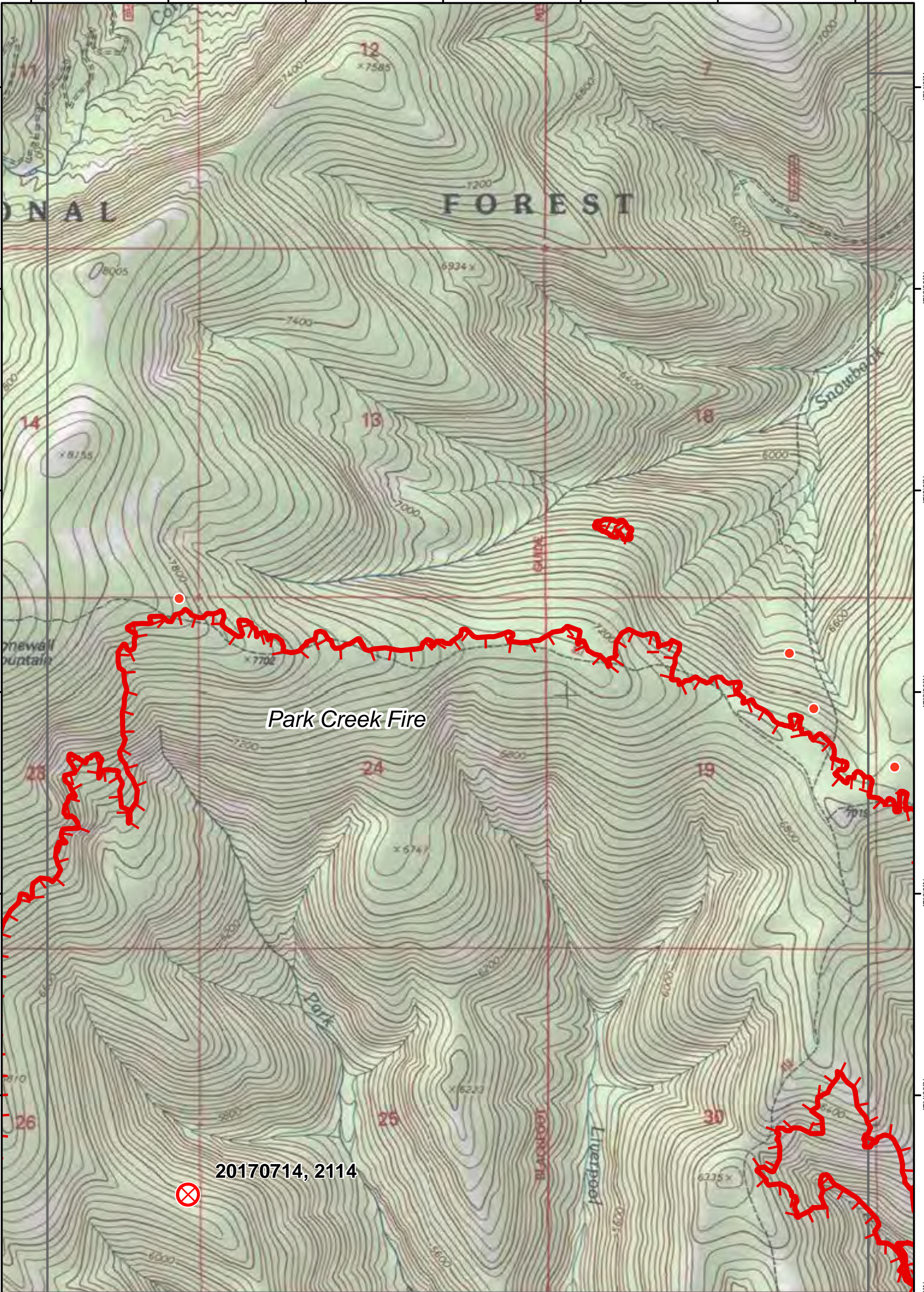
PAGE: **G4**

112°45'0"W 112°44'30"W 112°44'0"W 112°43'30"W 112°43'0"W 112°42'30"W 112°42'0"W

112°42'0"W 112°41'30"W 112°41'0"W 112°40'30"W 112°40'0"W 112°39'30"W 112°39'0"W

47°40'N  
47°33'N  
47°30'N  
47°23'N  
47°20'N  
47°13'N  
47°10'N

47°40'N  
47°33'N  
47°30'N  
47°23'N  
47°20'N  
47°13'N  
47°10'N



Park Creek Fire

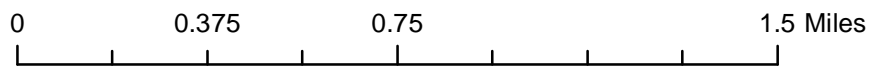
20170714, 2114

### Park Creek, Arrastra Creek & Alice Creek Fires IAP Map

08/11/2017



DMH



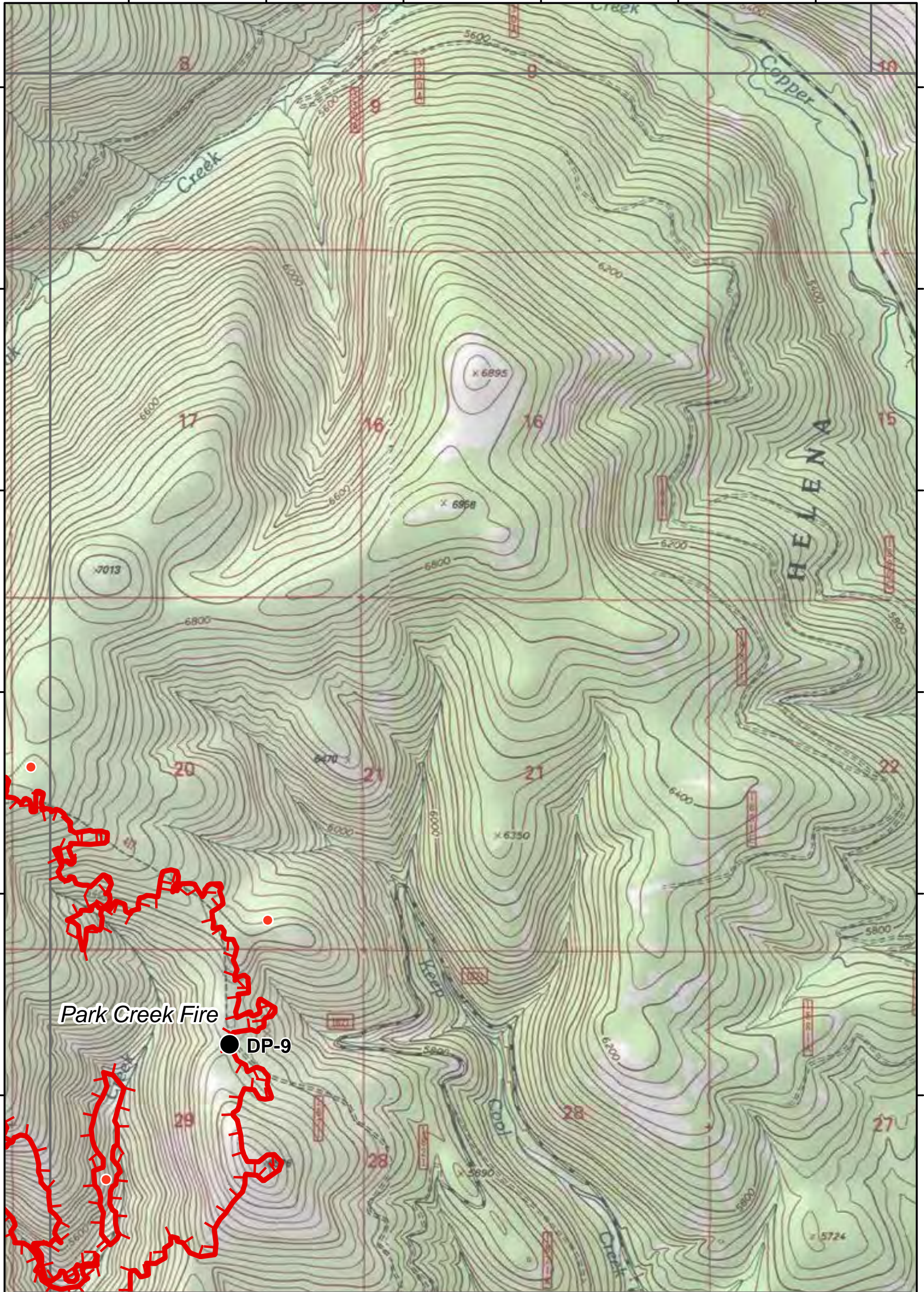
PAGE: **G5**

112°42'0"W 112°41'30"W 112°41'0"W 112°40'30"W 112°40'0"W 112°39'30"W 112°39'0"W

112°38'30"W 112°38'0"W 112°37'30"W 112°37'0"W 112°36'30"W 112°36'0"W

47°40'N  
47°33'N  
47°30'N  
47°23'N  
47°20'N  
47°13'N  
47°10'N

47°40'N  
47°33'N  
47°30'N  
47°23'N  
47°20'N  
47°13'N  
47°10'N



Park Creek Fire

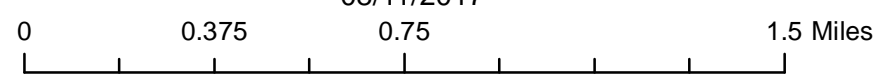
● DP-9

### Park Creek, Arrastra Creek & Alice Creek Fires IAP Map

08/11/2017



DMH



PAGE: **G6**

112°38'30"W 112°38'0"W 112°37'30"W 112°37'0"W 112°36'30"W 112°36'0"W

112°48'0"W

112°47'30"W

112°47'0"W

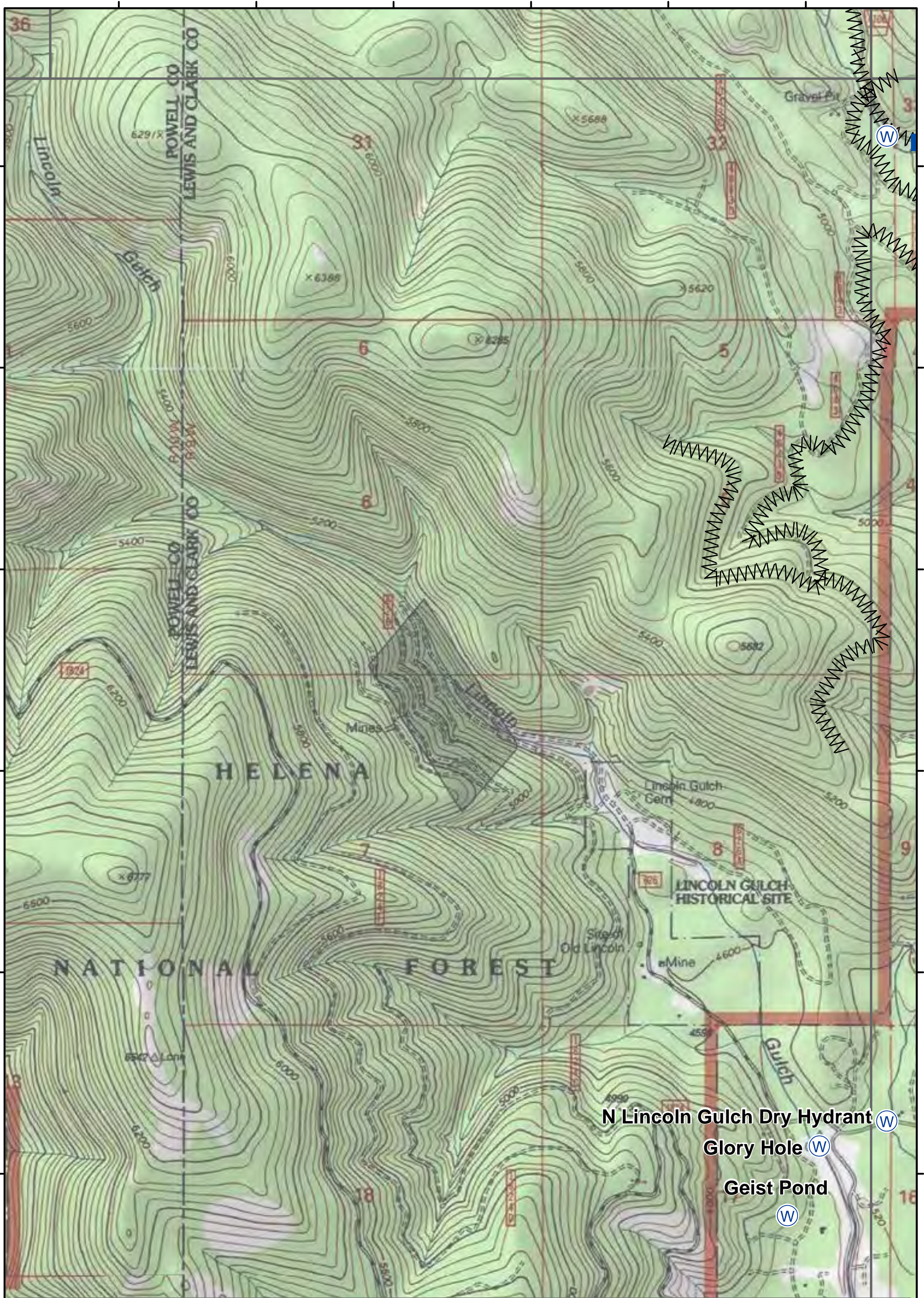
112°46'30"W

112°46'0"W

112°45'30"W

47°0'30"N  
47°0'0"N  
46°59'30"N  
46°59'0"N  
46°58'30"N  
46°58'0"N  
46°57'30"N

47°0'30"N  
47°0'0"N  
46°59'30"N  
46°59'0"N  
46°58'30"N  
46°58'0"N  
46°57'30"N



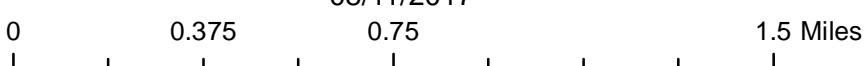
N Lincoln Gulch Dry Hydrant (W)  
 Glory Hole (W)  
 Geist Pond (W)

**Park Creek, Arrastra Creek & Alice Creek Fires**  
**IAP Map**

08/11/2017



DMH



PAGE: **H3**

112°48'0"W

112°47'30"W

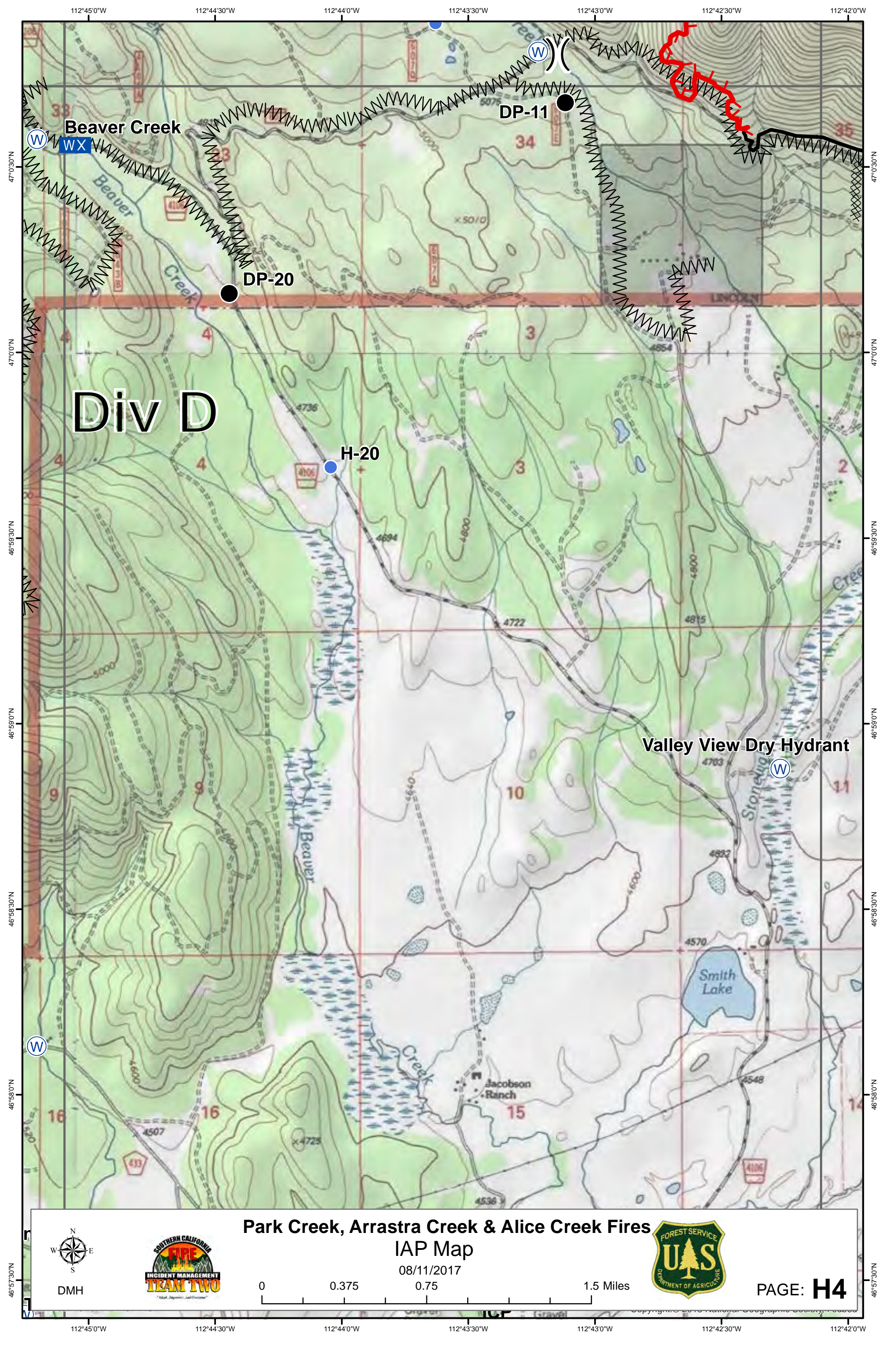
112°47'0"W

112°46'30"W

112°46'0"W

112°45'30"W





Beaver Creek

DP-11

DP-20

H-20

Valley View Dry Hydrant

Smith Lake

Jacobson Ranch

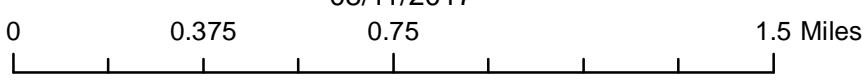
Div D

Park Creek, Arrastra Creek & Alice Creek Fires  
IAP Map

08/11/2017



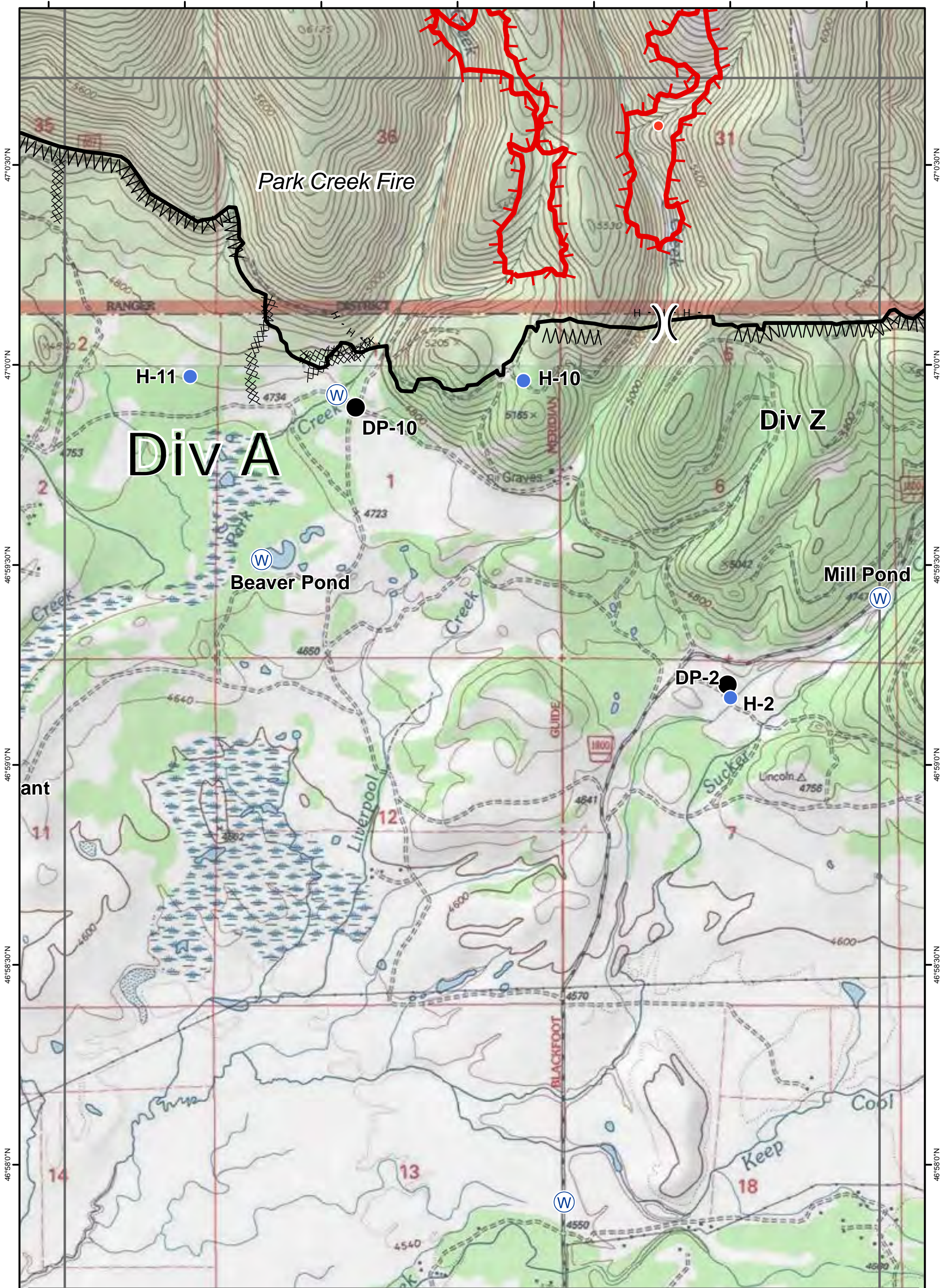
DMH



PAGE: H4

112°45'0"W 112°44'30"W 112°44'0"W 112°43'30"W 112°43'0"W 112°42'30"W 112°42'0"W  
47°0'30"N 47°0'0"N 46°59'30"N 46°59'0"N 46°58'30"N 46°58'0"N 46°57'30"N

112°42'0"W 112°41'30"W 112°41'0"W 112°40'30"W 112°40'0"W 112°39'30"W 112°39'0"W

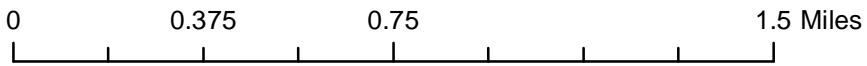


**Park Creek, Arrastra Creek & Alice Creek Fires**  
**IAP Map**

08/11/2017



DMH



PAGE: **H5**

46°57'30"N

46°58'0"N

46°58'30"N

46°59'0"N

46°59'30"N

47°0'0"N

47°0'30"N

46°57'30"N

46°58'0"N

46°58'30"N

46°59'0"N

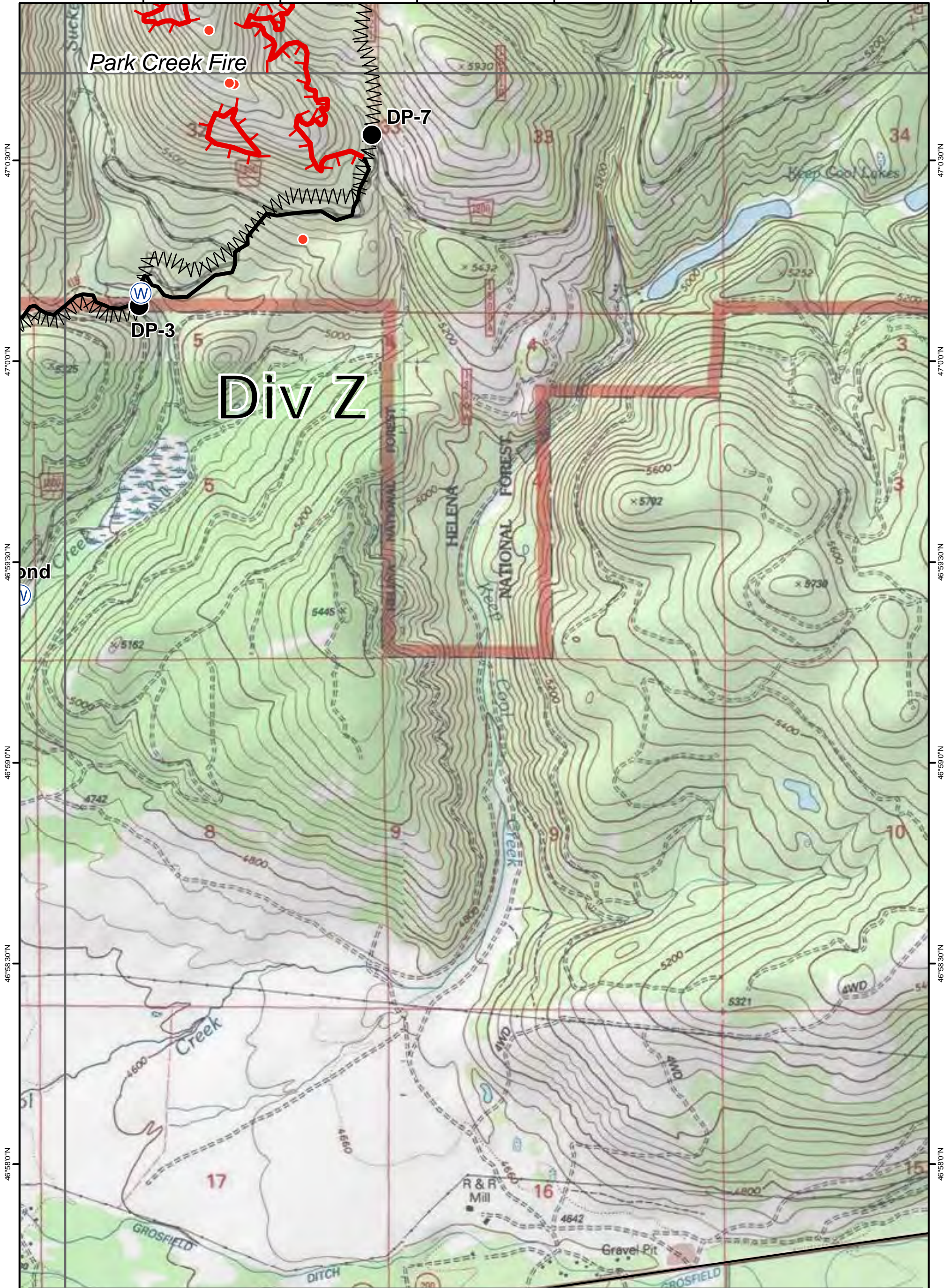
46°59'30"N

47°0'0"N

47°0'30"N

112°42'0"W 112°41'30"W 112°41'0"W 112°40'30"W 112°40'0"W 112°39'30"W 112°39'0"W

112°38'30"W 112°38'0"W 112°37'30"W 112°37'0"W 112°36'30"W 112°36'0"W



47°0'30"N  
47°0'0"N  
46°59'30"N  
46°59'0"N  
46°58'30"N  
46°58'0"N  
46°57'30"N

47°0'30"N  
47°0'0"N  
46°59'30"N  
46°59'0"N  
46°58'30"N  
46°58'0"N  
46°57'30"N

Park Creek Fire

DP-7

DP-3

Div Z

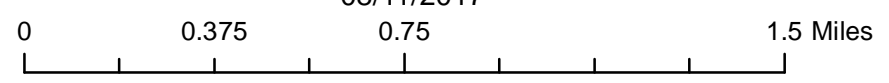
### Park Creek, Arrastra Creek & Alice Creek Fires

### IAP Map

08/11/2017



DMH



PAGE: **H6**

112°38'30"W 112°38'0"W 112°37'30"W 112°37'0"W 112°36'30"W 112°36'0"W