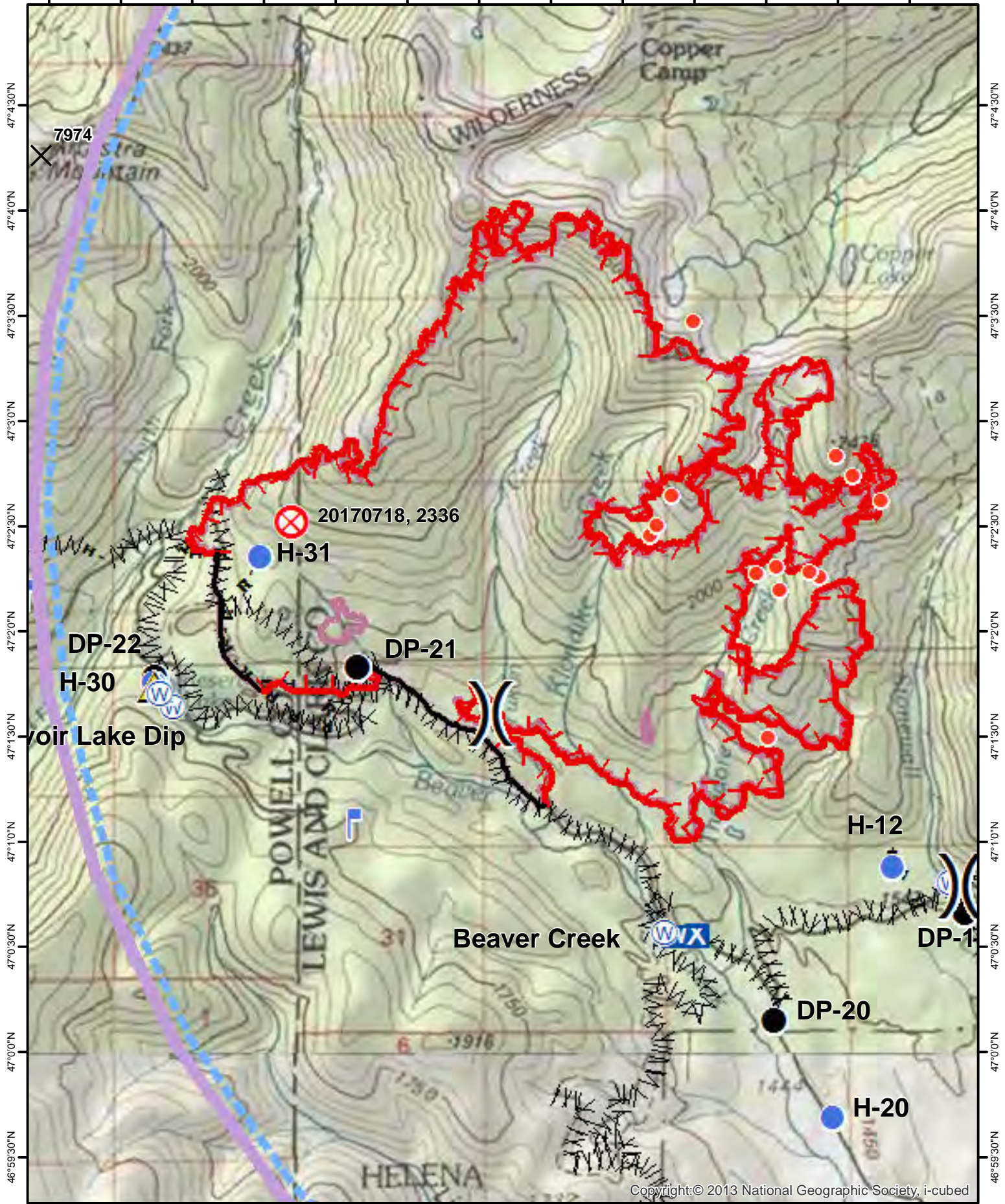


112°49'30"W 112°49'0"W 112°48'30"W 112°48'0"W 112°47'30"W 112°47'0"W 112°46'30"W 112°46'0"W 112°45'30"W 112°45'0"W 112°44'30"W 112°44'0"W 112°43'30"W



112°49'30"W 112°49'0"W 112°48'30"W 112°48'0"W 112°47'30"W 112°47'0"W 112°46'30"W 112°46'0"W 112°45'30"W 112°45'0"W 112°44'30"W 112°44'0"W 112°43'30"W



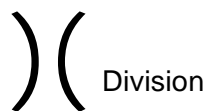
Air Ops Arrastra Creek

08/13/2017



Copyright:© 2013 National Geographic Society, i-cubed

Beaver Creek	47	0.559	-112	45.054
Beaver Pond	46	59.513	-112	41.218
Copper Creek	47	4.553	-112	37.218
Div G Lookout	47	2.175	-112	49.641
DP-10	46	59.894	-112	40.874
DP-11	47	0.673	-112	43.117
DP-2	46	59.201	-112	39.510
DP-20	47	0.159	-112	44.445
DP-21	47	1.838	-112	47.348
DP-22	47	1.791	-112	48.763
DP-3	47	0.139	-112	38.515
DP-7	47	0.565	-112	37.665
DP-9	47	1.626	-112	38.133
Geist Pond	46	57.896	-112	45.567
Glory Hole	46	58.069	-112	45.450
H-10	46	59.961	-112	40.257
H-11	46	59.971	-112	41.480
H-12	47	0.887	-112	43.630
H-2	46	59.168	-112	39.499
H-20	46	59.691	-112	44.044
H-3	47	9.580	-112	30.100
H-30	47	1.763	-112	48.773
H-31	47	2.359	-112	48.026
H-4	47	8.288	-112	27.447
H-5	47	8.292	-112	30.674
H-5	47	7.501	-112	31.479
Lincoln Springs/Lone Point	46	57.598	-112	45.321
Mill Pond	46	59.418	-112	38.950
N Lincoln Gulch Dry Hydrant	46	58.130	-112	45.204
Reservoir Lake Dip	47	1.648	-112	48.631
Road Closure	47	2.549	-112	50.232
Silver King Dip	47	4.830	-112	32.693
Spike Camp	47	9.249	-112	30.400
Tamarack Lane	46	57.407	-112	45.255
Valley View Dry Hydrant	46	58.879	-112	42.268
Wilderness Dip	47	10.642	-112	33.381
Safety Zone	47	1.745	-112	48.762
Water Source	47	0.170	-112	38.508
Water Source	47	0.811	-112	43.225
Water Source	46	59.926	-112	40.943
Water Source	47	0.574	-112	45.203
Water Source	47	1.709	-112	48.728
Water Source	46	57.906	-112	40.109
Camp	47	9.257	-112	30.365
Lookout	47	1.092	-112	47.392



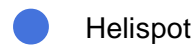
Division



Drop Point



Fire Origin



Helispot



Hot Spot



Water Source



Uncontrolled Fire Edge



Completed Dozer Line

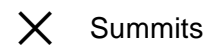


Completed Line

H · H · Hand Line



Line Break Completed



Summits



TFR

