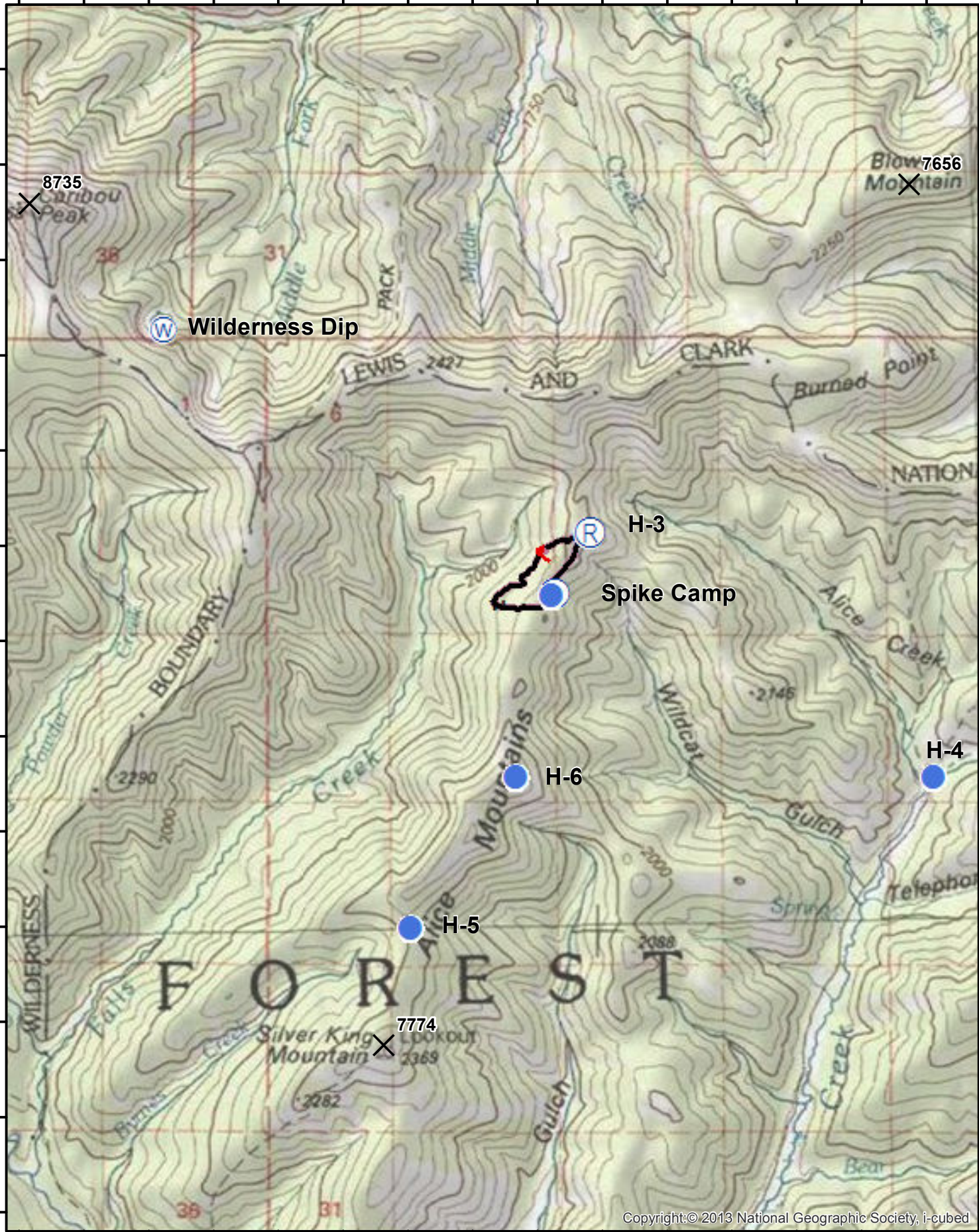


112°34'30"W 112°34'0"W 112°33'30"W 112°33'0"W 112°32'30"W 112°32'0"W 112°31'30"W 112°31'0"W 112°30'30"W 112°30'0"W 112°29'30"W 112°29'0"W 112°28'30"W 112°28'0"W 112°27'30"W

47°12'0"N  
47°11'30"N  
47°11'0"N  
47°10'30"N  
47°10'0"N  
47°9'30"N  
47°9'0"N  
47°8'30"N  
47°8'0"N  
47°7'30"N  
47°7'0"N  
47°6'30"N  
47°6'0"N

47°12'0"N  
47°11'30"N  
47°11'0"N  
47°10'30"N  
47°10'0"N  
47°9'30"N  
47°9'0"N  
47°8'30"N  
47°8'0"N  
47°7'30"N  
47°7'0"N  
47°6'30"N  
47°6'0"N



Copyright:© 2013 National Geographic Society, i-cubed

112°34'30"W 112°34'0"W 112°33'30"W 112°33'0"W 112°32'30"W 112°32'0"W 112°31'30"W 112°31'0"W 112°30'30"W 112°30'0"W 112°29'30"W 112°29'0"W 112°28'30"W 112°28'0"W 112°27'30"W

112°28'30"W 112°28'0"W 112°27'30"W



# Air Ops Alice Creek

08/14/2017

