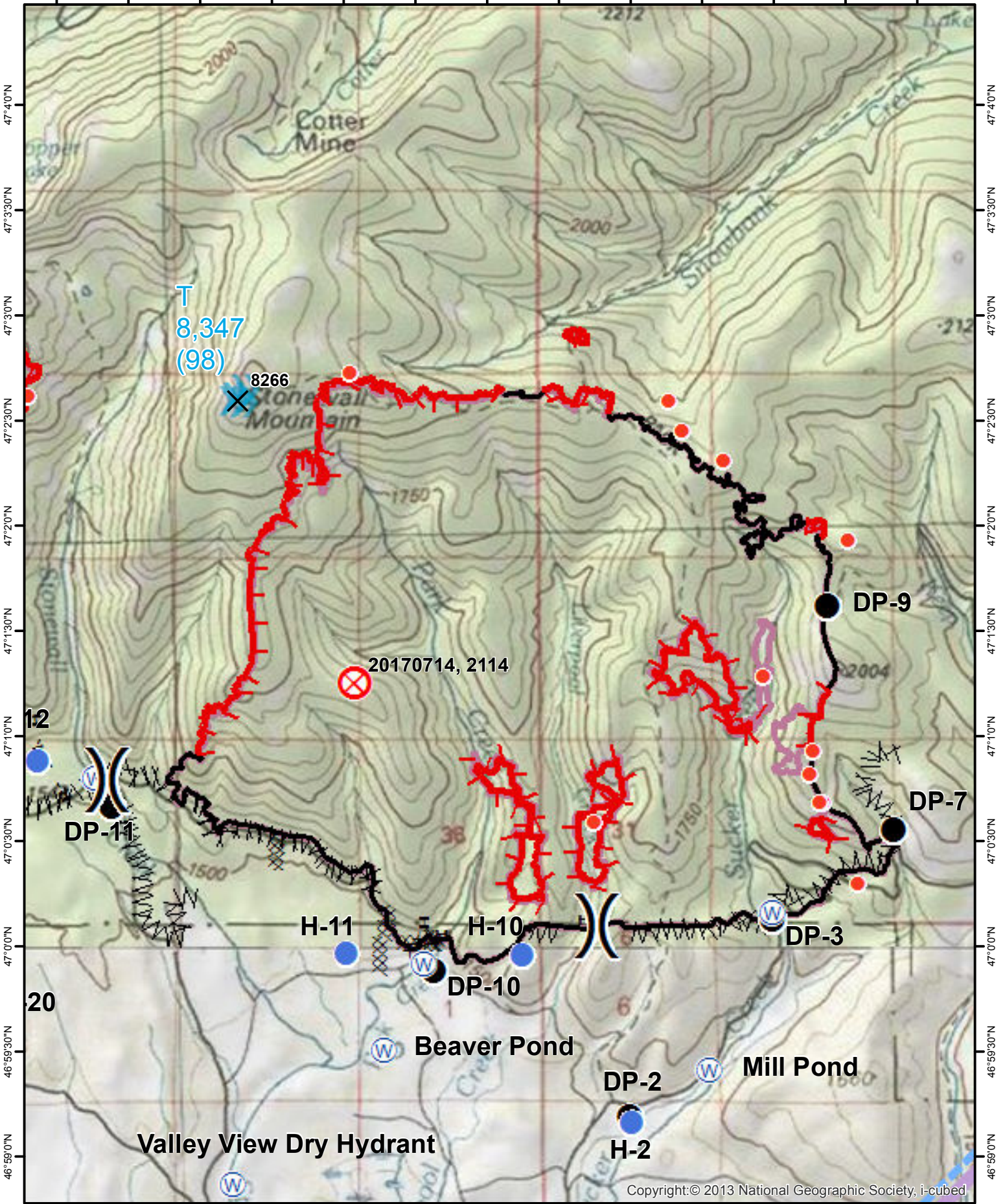


112°43'30"W 112°43'0"W 112°42'30"W 112°42'0"W 112°41'30"W 112°41'0"W 112°40'30"W 112°40'0"W 112°39'30"W 112°39'0"W 112°38'30"W 112°38'0"W 112°37'30"W



47°40'N
47°33'N
47°30'N
47°23'N
47°20'N
47°13'N
47°10'N
47°03'N
47°00'N
46°59'30"N
46°59'0"N

47°40'N
47°33'N
47°30'N
47°23'N
47°20'N
47°13'N
47°10'N
47°03'N
47°00'N
46°59'30"N
46°59'0"N

Copyright:© 2013 National Geographic Society, i-cubed

112°43'30"W 112°43'0"W 112°42'30"W 112°42'0"W 112°41'30"W 112°41'0"W 112°40'30"W 112°40'0"W 112°39'30"W 112°39'0"W 112°38'30"W 112°38'0"W 112°37'30"W



Air Ops Park Creek
08/14/2017

