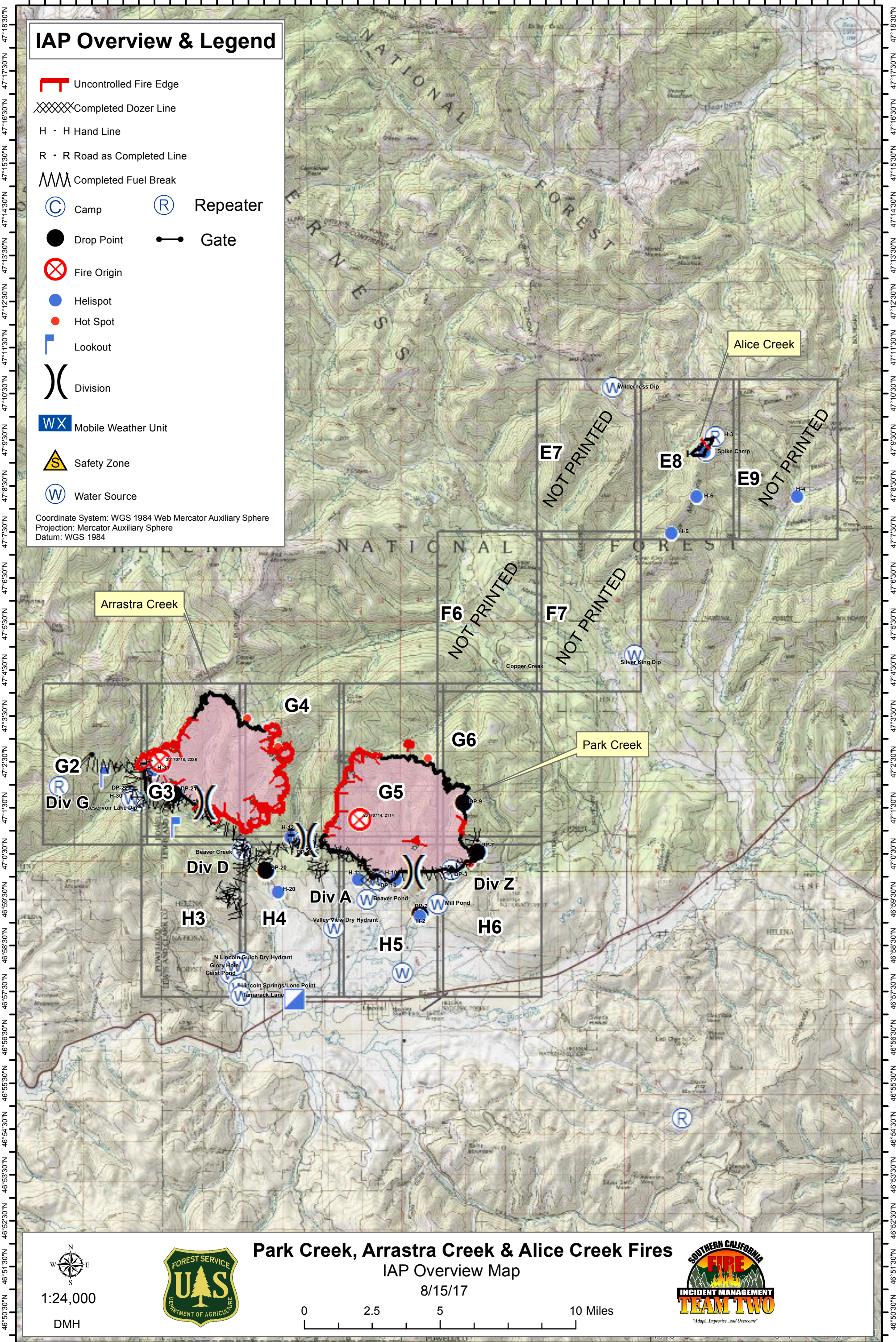


112°52'0"W 112°50'30"W 112°49'0"W 112°47'30"W 112°46'0"W 112°44'30"W 112°43'0"W 112°41'30"W 112°40'0"W 112°38'30"W 112°37'0"W 112°35'30"W 112°34'0"W 112°32'30"W 112°31'0"W 112°29'30"W 112°28'0"W 112°26'30"W 112°25'0"W

IAP Overview & Legend

- Uncontrolled Fire Edge
- Completed Dozer Line
- H - H Hand Line
- R - R Road as Completed Line
- Completed Fuel Break
- Camp
- Repeater
- Drop Point
- Gate
- Fire Origin
- Helispot
- Hot Spot
- Lookout
- Division
- Mobile Weather Unit
- Safety Zone
- Water Source

Coordinate System: WGS 1984 Web Mercator Auxiliary Sphere
Projection: Mercator Auxiliary Sphere
Datum: WGS 1984



Arrastra Creek

Alice Creek

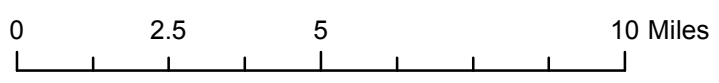
Park Creek

1:24,000

 DMH



Park Creek, Arrastra Creek & Alice Creek Fires
IAP Overview Map
8/15/17



112°52'0"W 112°50'30"W 112°49'0"W 112°47'30"W 112°46'0"W 112°44'30"W 112°43'0"W 112°41'30"W 112°40'0"W 112°38'30"W 112°37'0"W 112°35'30"W 112°34'0"W 112°32'30"W 112°31'0"W 112°29'30"W 112°28'0"W 112°26'30"W 112°25'0"W