

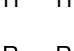














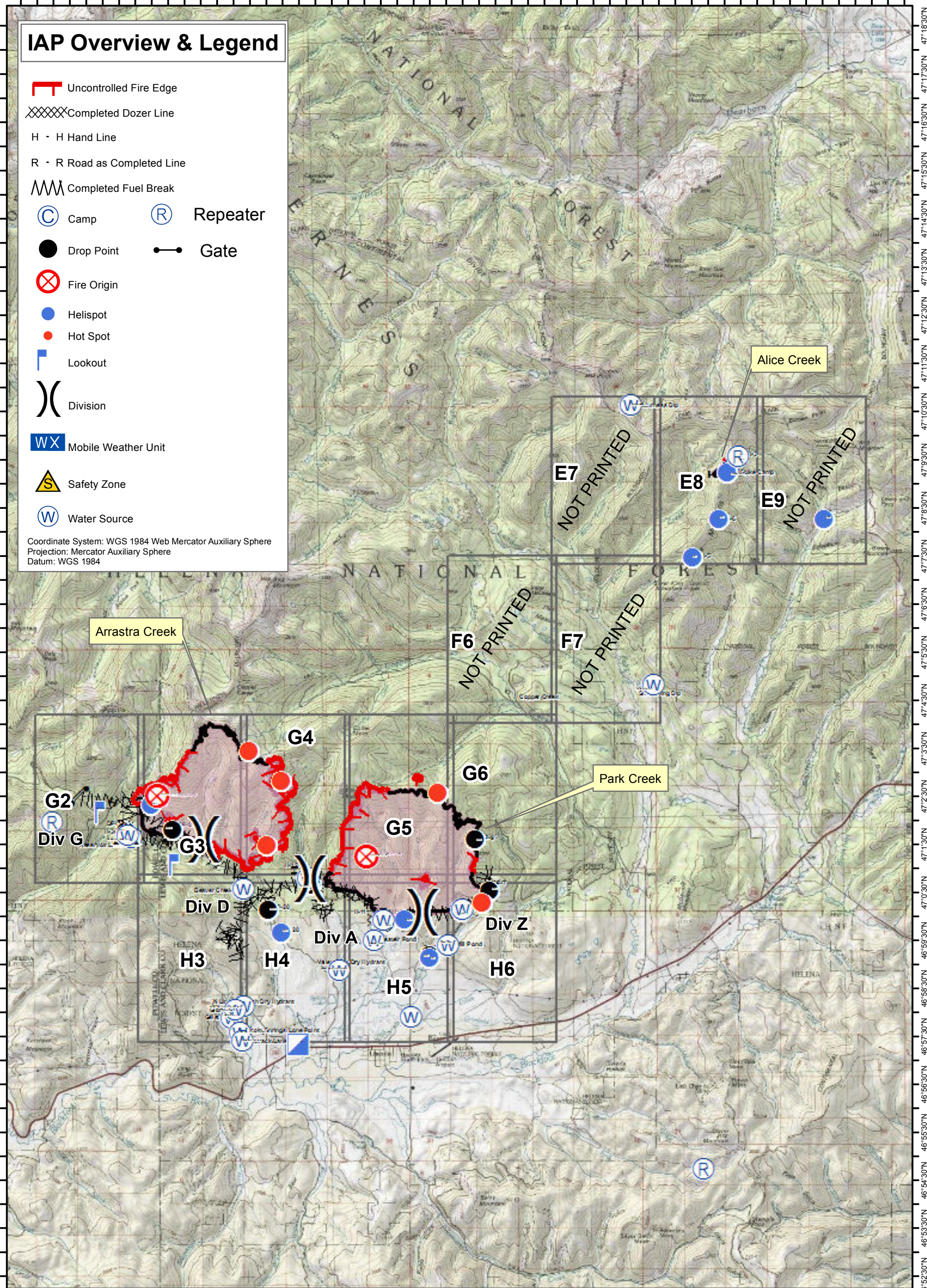



112°52'0"W 112°50'30"W 112°49'0"W 112°47'30"W 112°46'0"W 112°44'30"W 112°43'0"W 112°41'30"W 112°40'0"W 112°38'30"W 112°37'0"W 112°35'30"W 112°34'0"W 112°32'30"W 112°31'0"W 112°29'30"W 112°28'0"W 112°26'30"W 112°25'0"W


# IAP Overview & Legend

-  Uncontrolled Fire Edge
-  Completed Dozer Line
-  H - H Hand Line
-  R - R Road as Completed Line
-  Completed Fuel Break
-  Camp
-  Repeater
-  Drop Point
-  Gate
-  Fire Origin
-  Helispot
-  Hot Spot
-  Lookout
-  Division
-  Mobile Weather Unit
-  Safety Zone
-  Water Source


Coordinate System: WGS 1984 Web Mercator Auxiliary Sphere  
Projection: Mercator Auxiliary Sphere  
Datum: WGS 1984

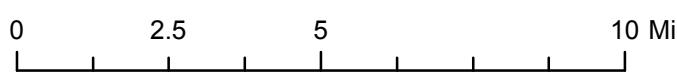


  
 1:24,000  
 DMH



**Park Creek, Arrastra Creek & Alice Creek Fires**  
 IAP Overview Map  
 8/16/17



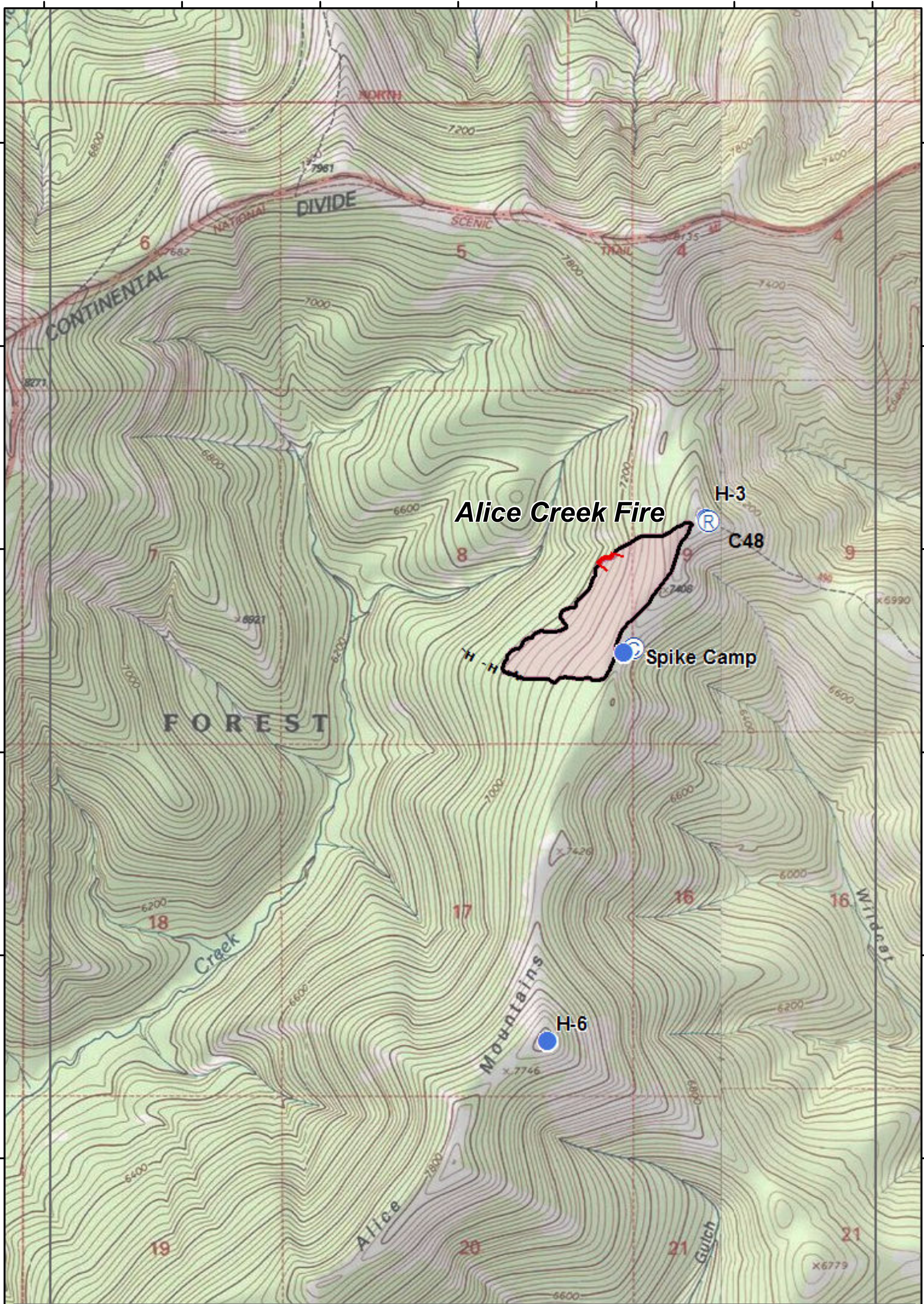


112°52'0"W 112°50'30"W 112°49'0"W 112°47'30"W 112°46'0"W 112°44'30"W 112°43'0"W 112°41'30"W 112°40'0"W 112°38'30"W 112°37'0"W 112°35'30"W 112°34'0"W 112°32'30"W 112°31'0"W 112°29'30"W 112°28'0"W 112°26'30"W 112°25'0"W

112°32'30"W 112°32'0"W 112°31'30"W 112°31'0"W 112°30'30"W 112°30'0"W 112°29'30"W

47°10'30"N  
47°10'0"N  
47°9'30"N  
47°9'0"N  
47°8'30"N  
47°8'0"N  
47°7'30"N

47°10'30"N  
47°10'0"N  
47°9'30"N  
47°9'0"N  
47°8'30"N  
47°8'0"N  
47°7'30"N

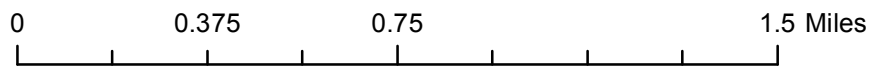


### Park Creek, Arrastra Creek & Alice Creek Fires

IAP Map  
08/16/2017



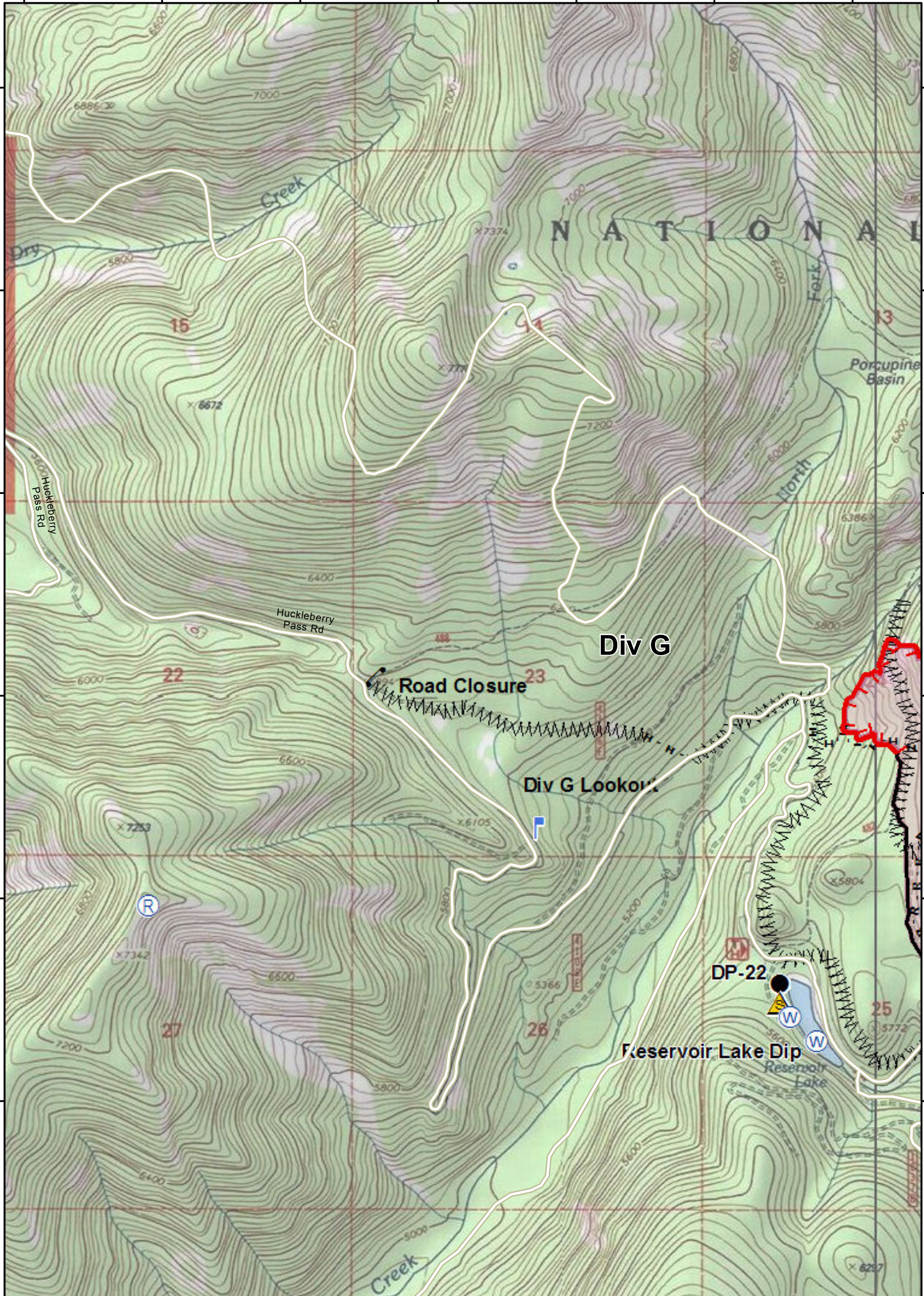
DMH



PAGE: **E8**

112°32'30"W 112°32'0"W 112°31'30"W 112°31'0"W 112°30'30"W 112°30'0"W 112°29'30"W

112°51'30"W 112°51'0"W 112°50'30"W 112°50'0"W 112°49'30"W 112°49'0"W 112°48'30"W



**Park Creek, Arrastra Creek & Alice Creek Fires**  
**IAP Map**  
 08/16/2017

DMH

SOUTHERN CALIFORNIA  
**FIRE**  
 INCIDENT MANAGEMENT  
**TEAM TWO**  
"Adapt...Improve...and Overcome"

0 0.375 0.75 1.5 Miles

FOREST SERVICE  
**US**  
 DEPARTMENT OF AGRICULTURE

PAGE: **G2**

112°51'30"W 112°51'0"W 112°50'30"W 112°50'0"W 112°49'30"W 112°49'0"W 112°48'30"W

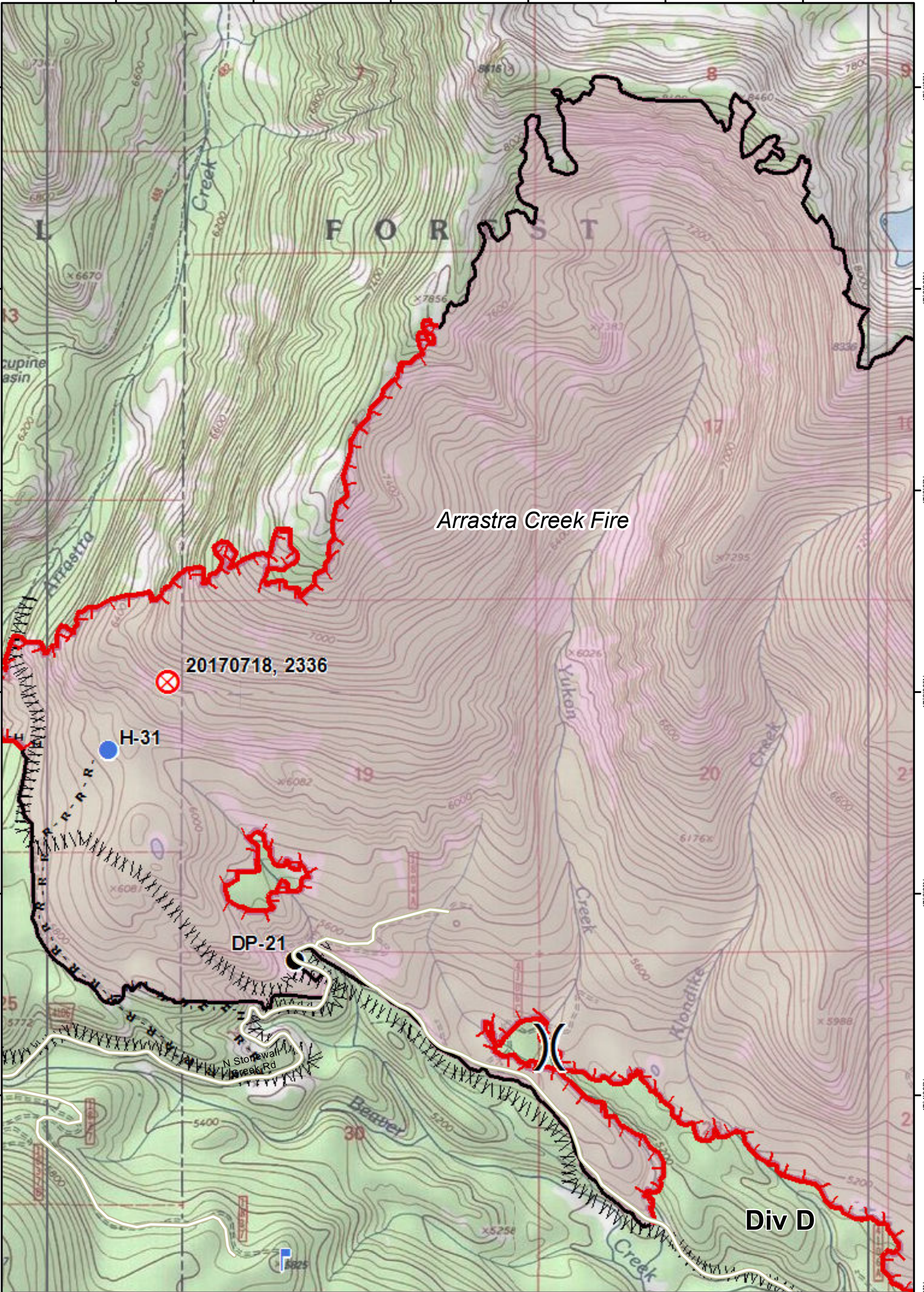
47°40'N 47°30'N 47°30'N 47°20'N 47°20'N 47°10'N 47°10'N

47°40'N 47°30'N 47°30'N 47°20'N 47°20'N 47°10'N 47°10'N

112°48'0"W 112°47'30"W 112°47'0"W 112°46'30"W 112°46'0"W 112°45'30"W

47°40'N  
47°33'0"N  
47°30'0"N  
47°23'0"N  
47°20'0"N  
47°13'0"N  
47°10'N

47°40'N  
47°33'0"N  
47°30'0"N  
47°23'0"N  
47°20'0"N  
47°13'0"N  
47°10'N



Arresta Creek Fire

20170718, 2336

H-31

DP-21

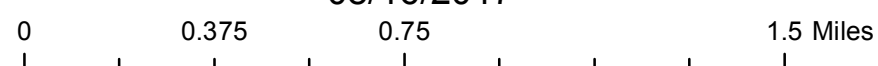
Div D

Park Creek, Arrastra Creek & Alice Creek Fires

IAP Map  
08/16/2017

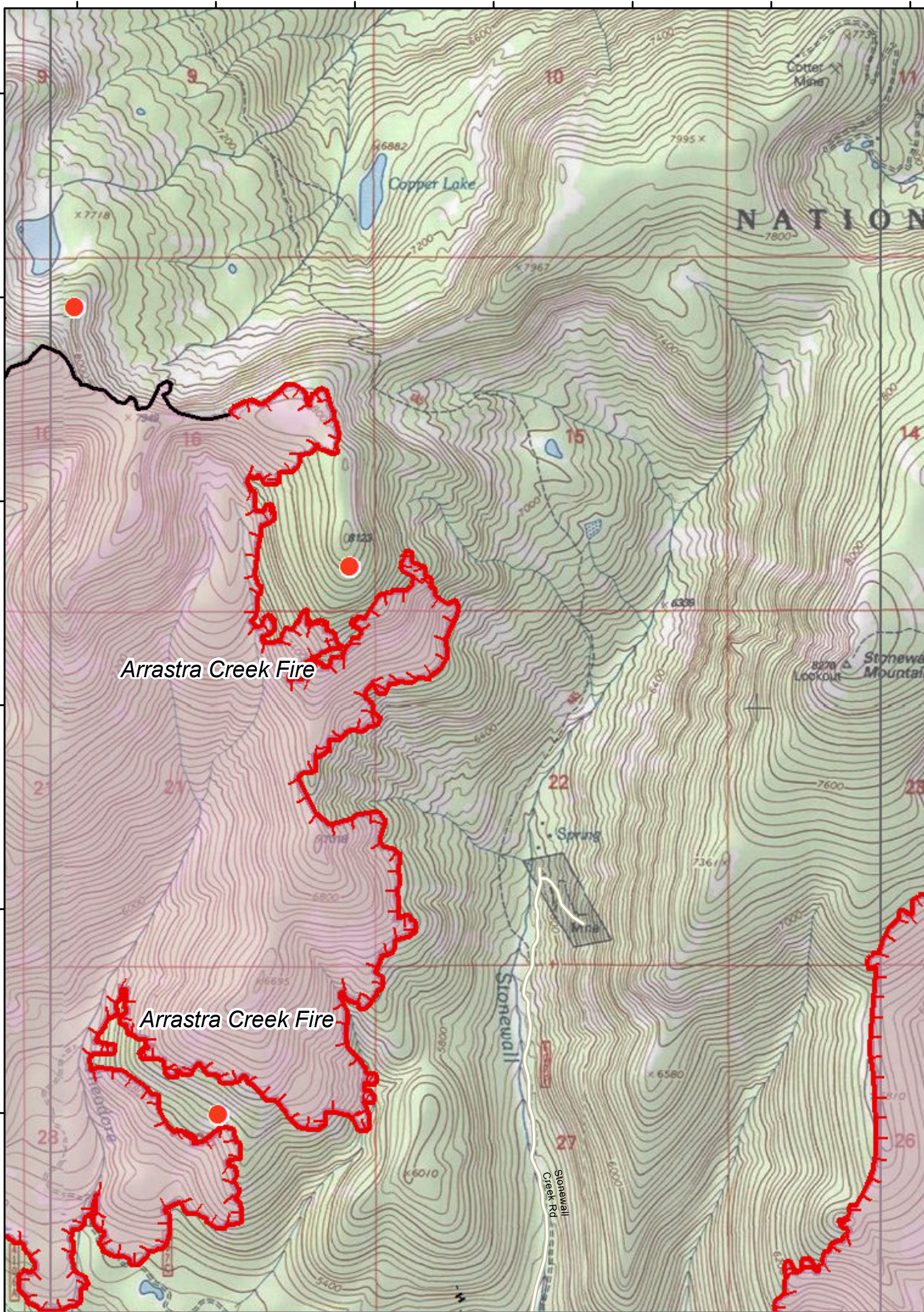


DMH



PAGE: G3

112°48'0"W 112°47'30"W 112°47'0"W 112°46'30"W 112°46'0"W 112°45'30"W



Arrastra Creek Fire

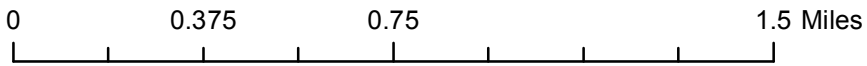
Arrastra Creek Fire

### Park Creek, Arrastra Creek & Alice Creek Fires

IAP Map  
08/16/2017



DMH

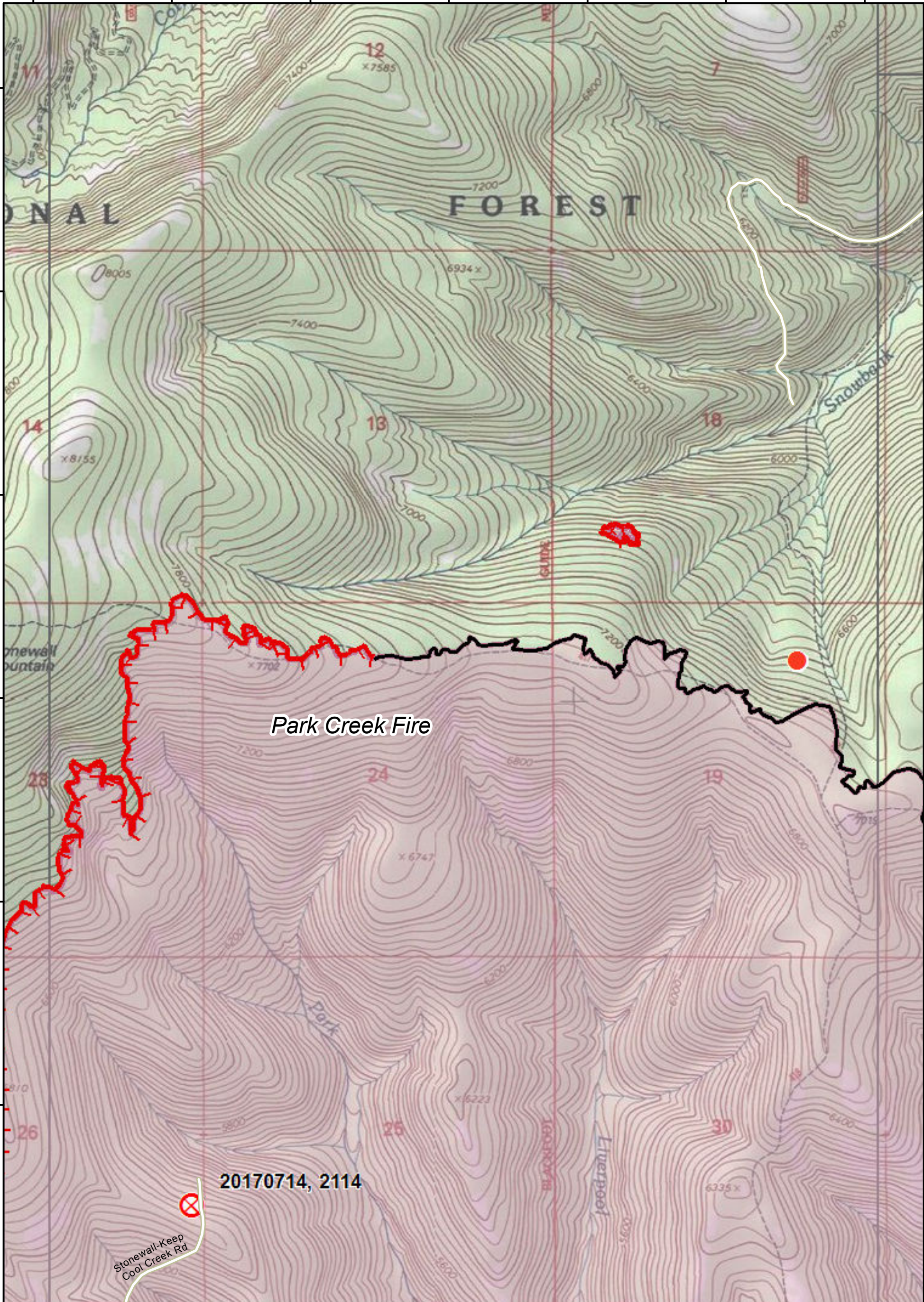


PAGE: **G4**

112°42'0"W 112°41'30"W 112°41'0"W 112°40'30"W 112°40'0"W 112°39'30"W 112°39'0"W

47°40'N  
47°33'N  
47°30'N  
47°23'N  
47°20'N  
47°13'N  
47°10'N

47°40'N  
47°33'N  
47°30'N  
47°23'N  
47°20'N  
47°13'N  
47°10'N



Park Creek Fire

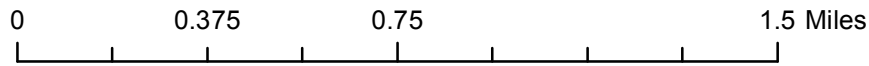
20170714, 2114



DMH



Park Creek, Arrastra Creek & Alice Creek Fires  
IAP Map  
08/16/2017



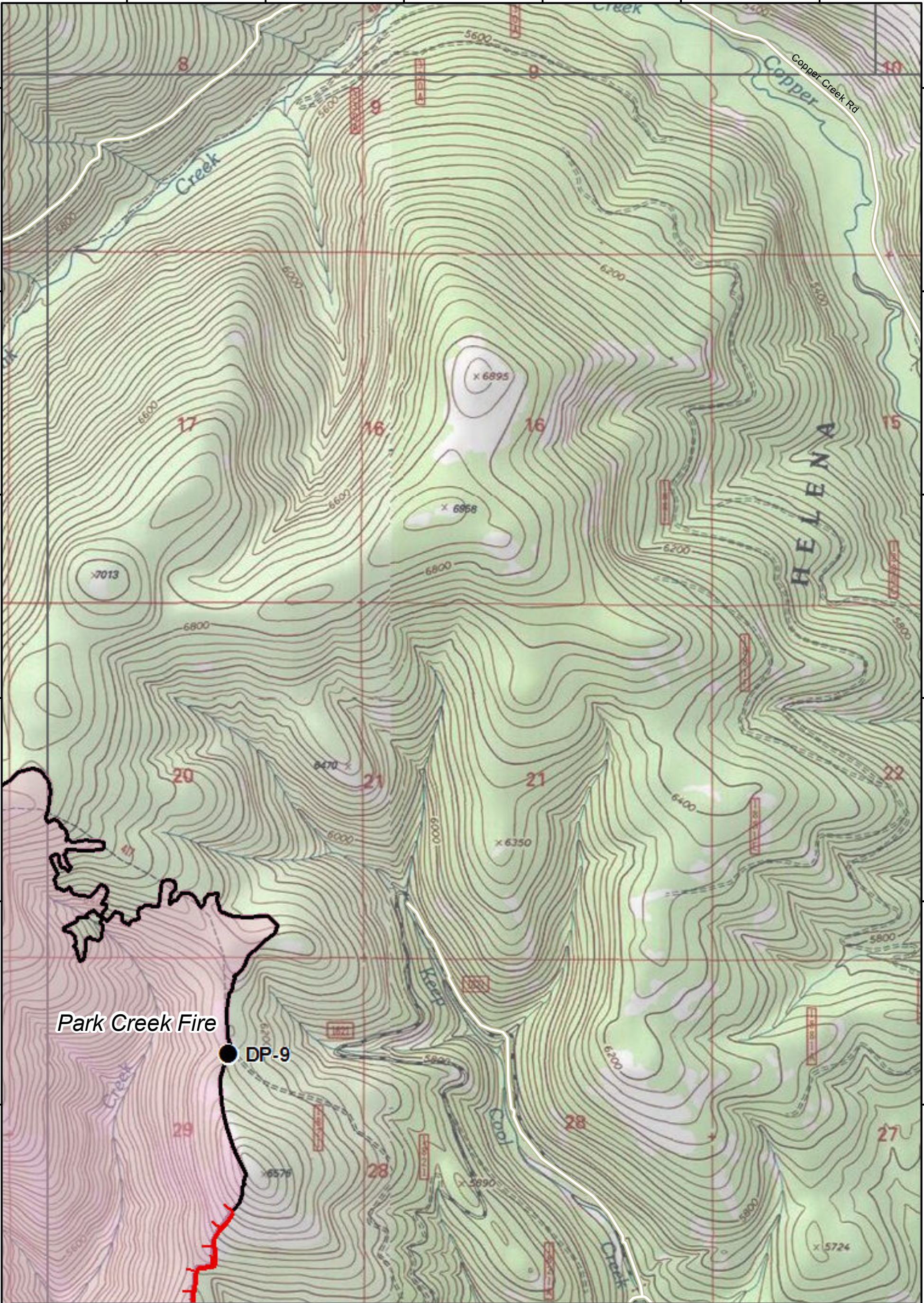
PAGE: G5

112°42'0"W 112°41'30"W 112°41'0"W 112°40'30"W 112°40'0"W 112°39'30"W 112°39'0"W

112°38'30"W 112°38'0"W 112°37'30"W 112°37'0"W 112°36'30"W 112°36'0"W

47°40'N  
47°33'N  
47°30'N  
47°23'N  
47°20'N  
47°13'N  
47°10'N

47°40'N  
47°33'N  
47°30'N  
47°23'N  
47°20'N  
47°13'N  
47°10'N



Park Creek Fire

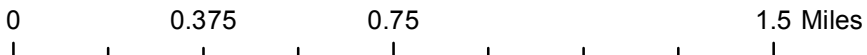
DP-9

### Park Creek, Arrastra Creek & Alice Creek Fires

IAP Map  
08/16/2017



DMH



PAGE: **G6**

112°38'30"W 112°38'0"W 112°37'30"W 112°37'0"W 112°36'30"W 112°36'0"W

112°48'0"W

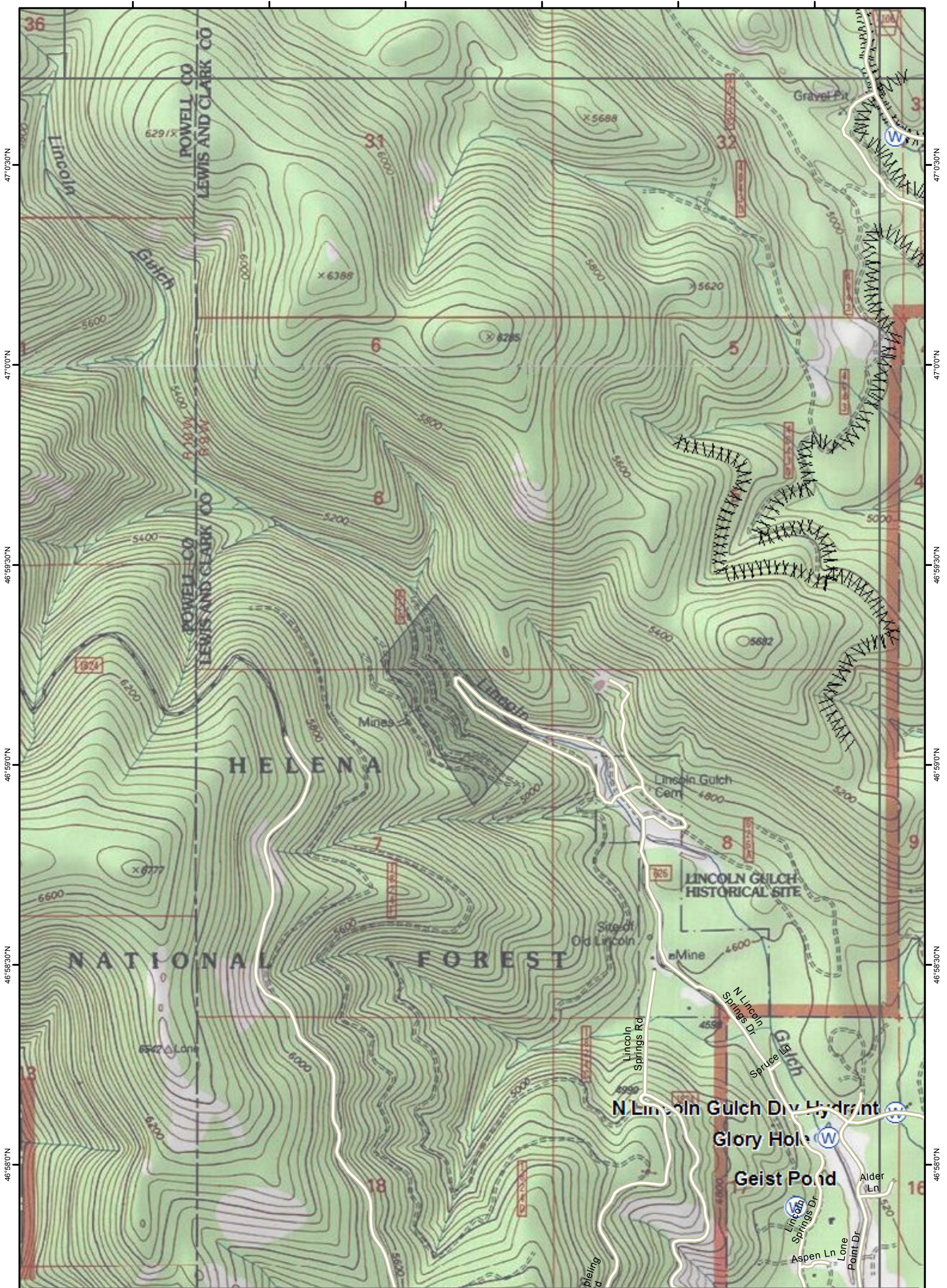
112°47'30"W

112°47'0"W

112°46'30"W

112°46'0"W

112°45'30"W



47°0'30"N  
47°0'0"N  
46°59'30"N  
46°59'0"N  
46°58'30"N  
46°58'0"N  
46°57'30"N

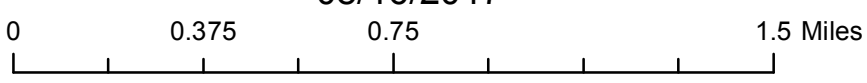
47°0'30"N  
47°0'0"N  
46°59'30"N  
46°59'0"N  
46°58'30"N  
46°58'0"N  
46°57'30"N



DMH



**Park Creek, Arrastra Creek & Alice Creek Fires**  
IAP Map  
08/16/2017



PAGE: **H3**

112°48'0"W

112°47'30"W

112°47'0"W

112°46'30"W

112°46'0"W

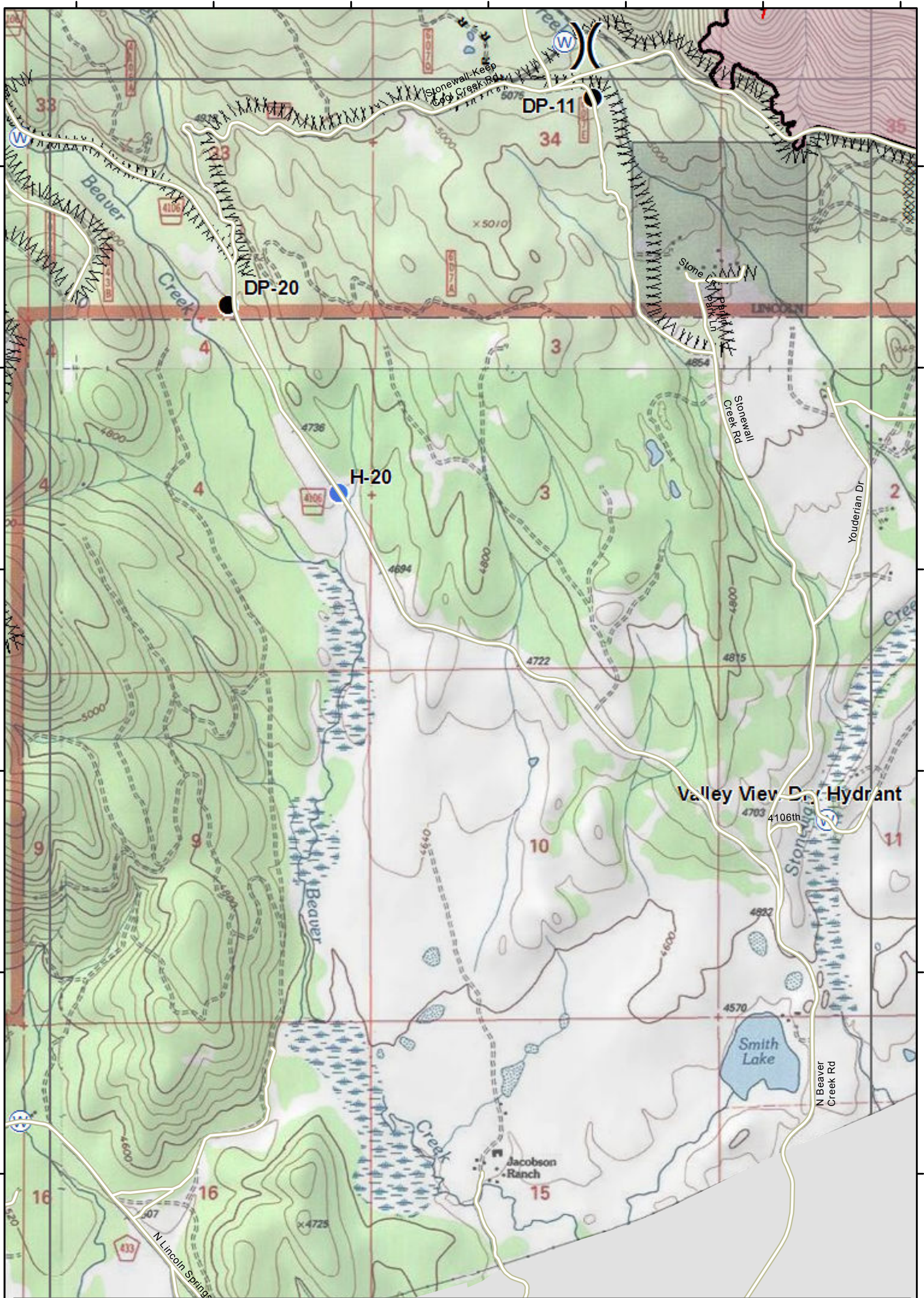
112°45'30"W



112°45'0"W 112°44'30"W 112°44'0"W 112°43'30"W 112°43'0"W 112°42'30"W 112°42'0"W

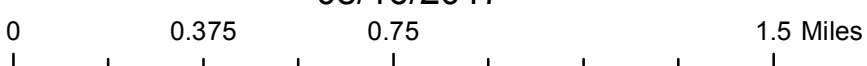
47°0'30"N  
47°0'0"N  
46°59'30"N  
46°59'0"N  
46°58'30"N  
46°58'0"N  
46°57'30"N

47°0'30"N  
47°0'0"N  
46°59'30"N  
46°59'0"N  
46°58'30"N  
46°58'0"N  
46°57'30"N



### Park Creek, Arrastra Creek & Alice Creek Fires

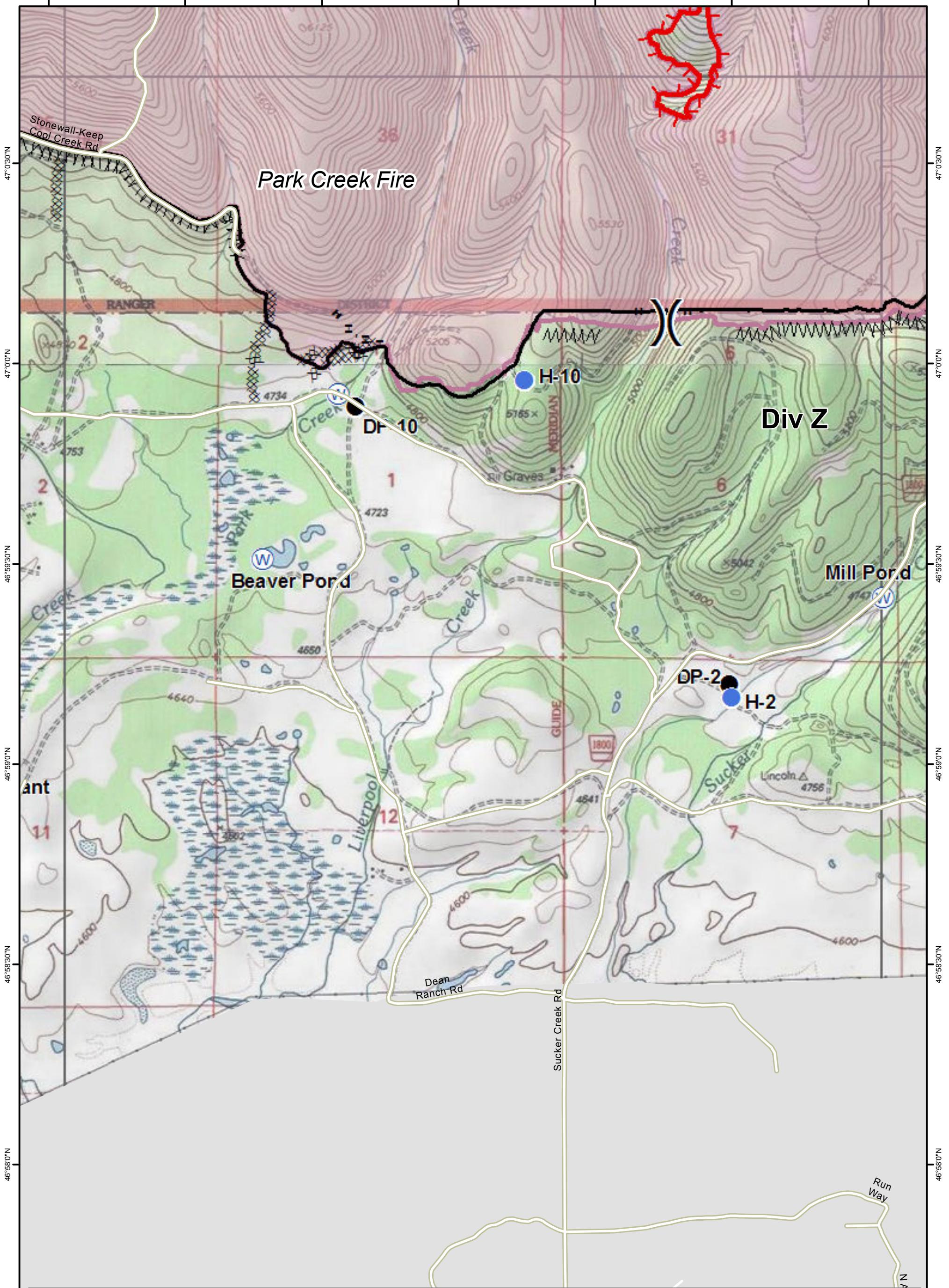
IAP Map  
08/16/2017



PAGE: **H4**



112°45'0"W 112°44'30"W 112°44'0"W 112°43'30"W 112°43'0"W 112°42'30"W 112°42'0"W

112°42'0"W 112°41'30"W 112°41'0"W 112°40'30"W 112°40'0"W 112°39'30"W 112°39'0"W



**Park Creek, Arrastra Creek & Alice Creek Fires**  
**IAP Map**  
 08/16/2017

DMH

0 0.375 0.75 1.5 Miles

PAGE: **H5**

112°42'0"W 112°41'30"W 112°41'0"W 112°40'30"W 112°40'0"W 112°39'30"W 112°39'0"W

112°38'30"W 112°38'0"W 112°37'30"W 112°37'0"W 112°36'30"W 112°36'0"W

47°0'30"N  
47°0'0"N  
46°59'30"N  
46°59'0"N  
46°58'30"N  
46°58'0"N  
46°57'30"N

47°0'30"N  
47°0'0"N  
46°59'30"N  
46°59'0"N  
46°58'30"N  
46°58'0"N  
46°57'30"N

Park Creek Fire

DP-7

DP-3

HELENA NATIONAL FOREST

HELENA NATIONAL FOREST

HELENA NATIONAL FOREST

Mill Rd Smiley Rd

Avrolet Ave

Abe

### Park Creek, Arrastra Creek & Alice Creek Fires

### IAP Map

08/16/2017



DMH



0 0.375 0.75 1.5 Miles

PAGE: **H6**

112°38'30"W 112°38'0"W 112°37'30"W 112°37'0"W 112°36'30"W 112°36'0"W