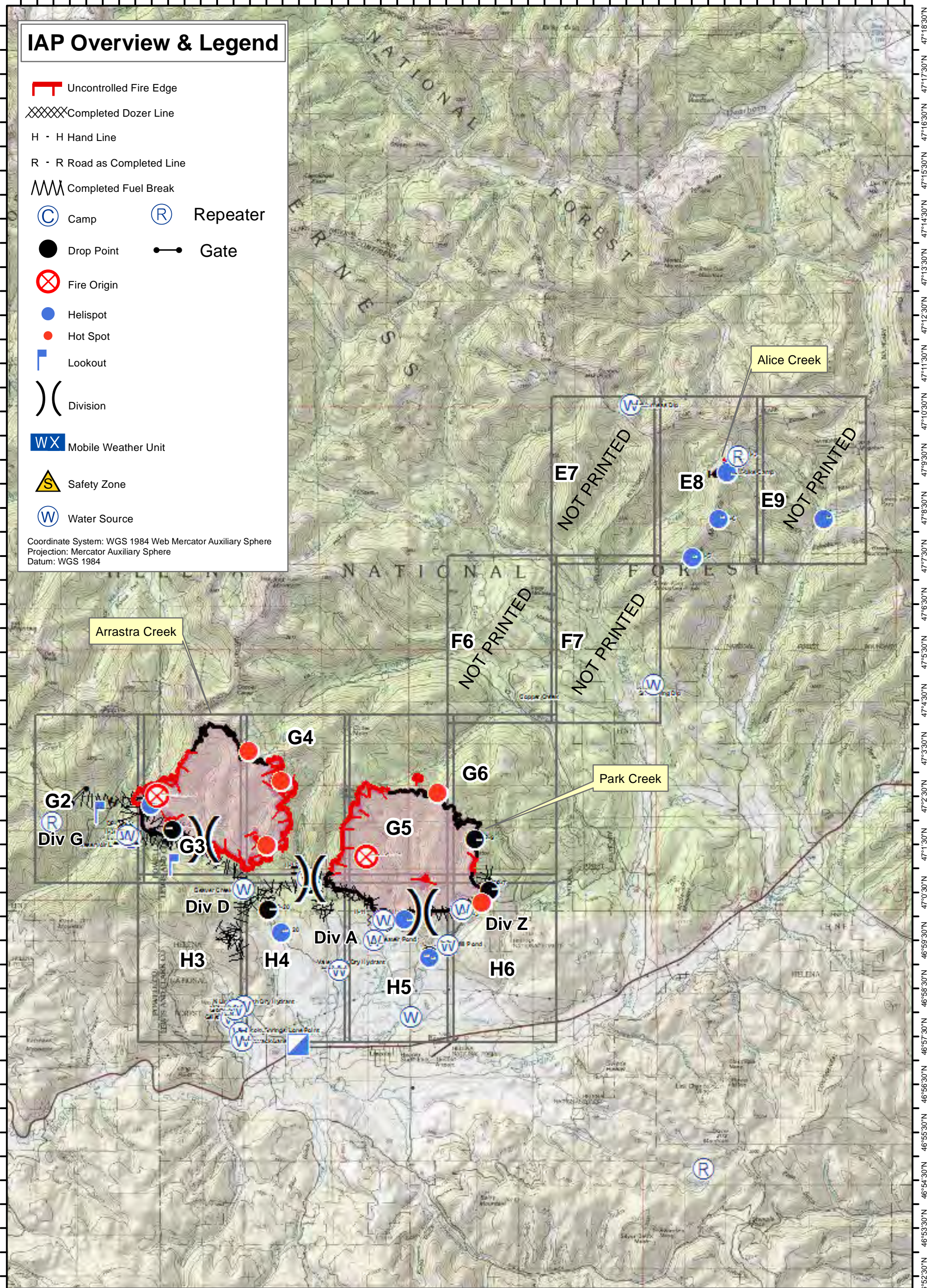



112°52'0"W 112°50'30"W 112°49'0"W 112°47'30"W 112°46'0"W 112°44'30"W 112°43'0"W 112°41'30"W 112°40'0"W 112°38'30"W 112°37'0"W 112°35'30"W 112°34'0"W 112°32'30"W 112°31'0"W 112°29'30"W 112°28'0"W 112°26'30"W 112°25'0"W

IAP Overview & Legend


- Uncontrolled Fire Edge
- Completed Dozer Line
- H - H Hand Line
- R - R Road as Completed Line
- Completed Fuel Break
- Camp
- Repeater
- Drop Point
- Gate
- Fire Origin
- Helispot
- Hot Spot
- Lookout
- Division
- Mobile Weather Unit
- Safety Zone
- Water Source

Coordinate System: WGS 1984 Web Mercator Auxiliary Sphere
Projection: Mercator Auxiliary Sphere
Datum: WGS 1984







1:24,000
DMH



Park Creek, Arrastra Creek & Alice Creek Fires
IAP Overview Map
8/16/17



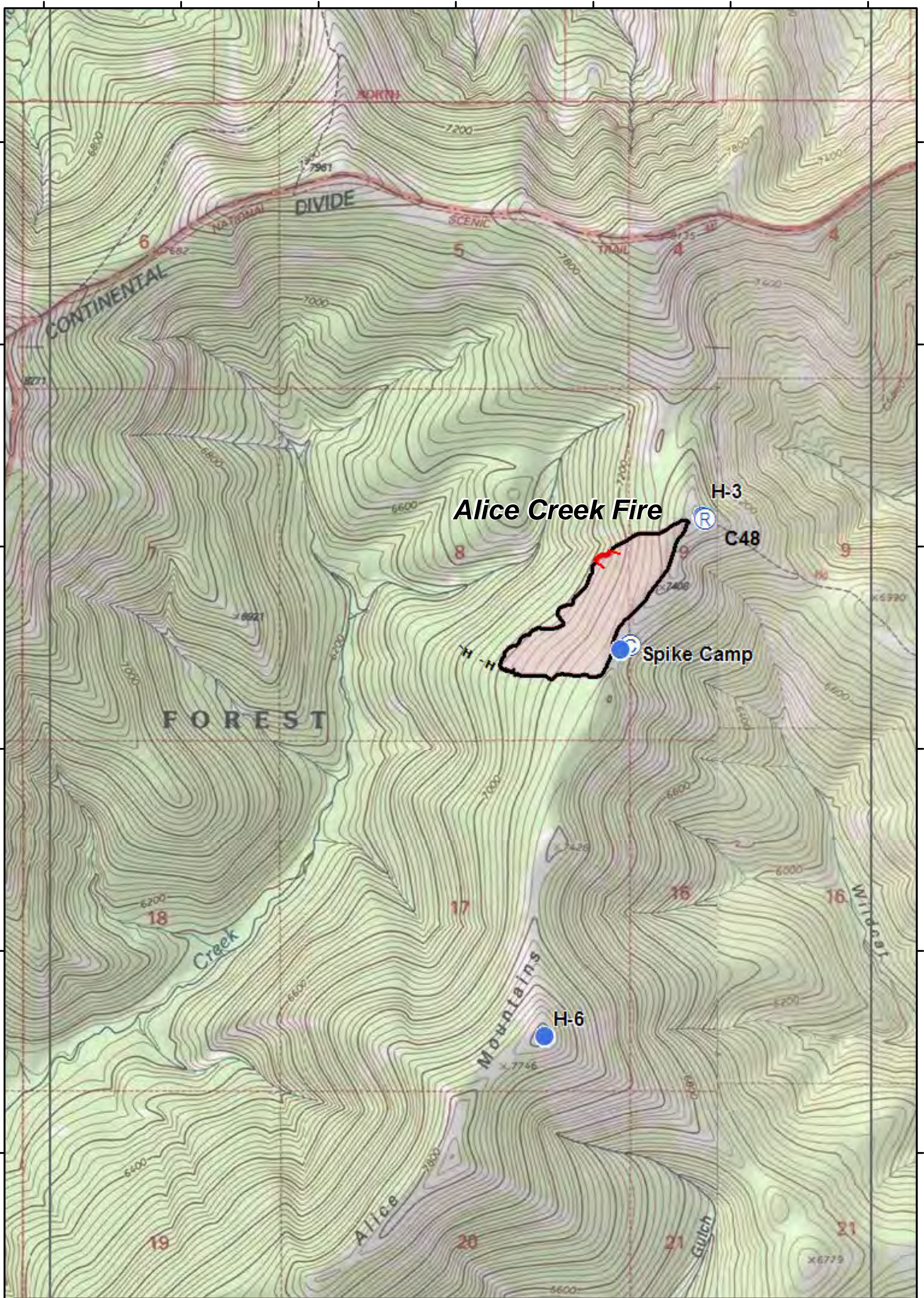


112°52'0"W 112°50'30"W 112°49'0"W 112°47'30"W 112°46'0"W 112°44'30"W 112°43'0"W 112°41'30"W 112°40'0"W 112°38'30"W 112°37'0"W 112°35'30"W 112°34'0"W 112°32'30"W 112°31'0"W 112°29'30"W 112°28'0"W 112°26'30"W 112°25'0"W

112°32'30"W 112°32'0"W 112°31'30"W 112°31'0"W 112°30'30"W 112°30'0"W 112°29'30"W

47°10'30"N
47°10'0"N
47°9'30"N
47°9'0"N
47°8'30"N
47°8'0"N
47°7'30"N

47°10'30"N
47°10'0"N
47°9'30"N
47°9'0"N
47°8'30"N
47°8'0"N
47°7'30"N



Alice Creek Fire

Spike Camp

H-6

H-3

C48

FOREST

Creek

Mountains

Alice

Gulch

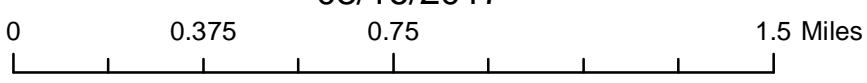


DMH



Park Creek, Arrastra Creek & Alice Creek Fires

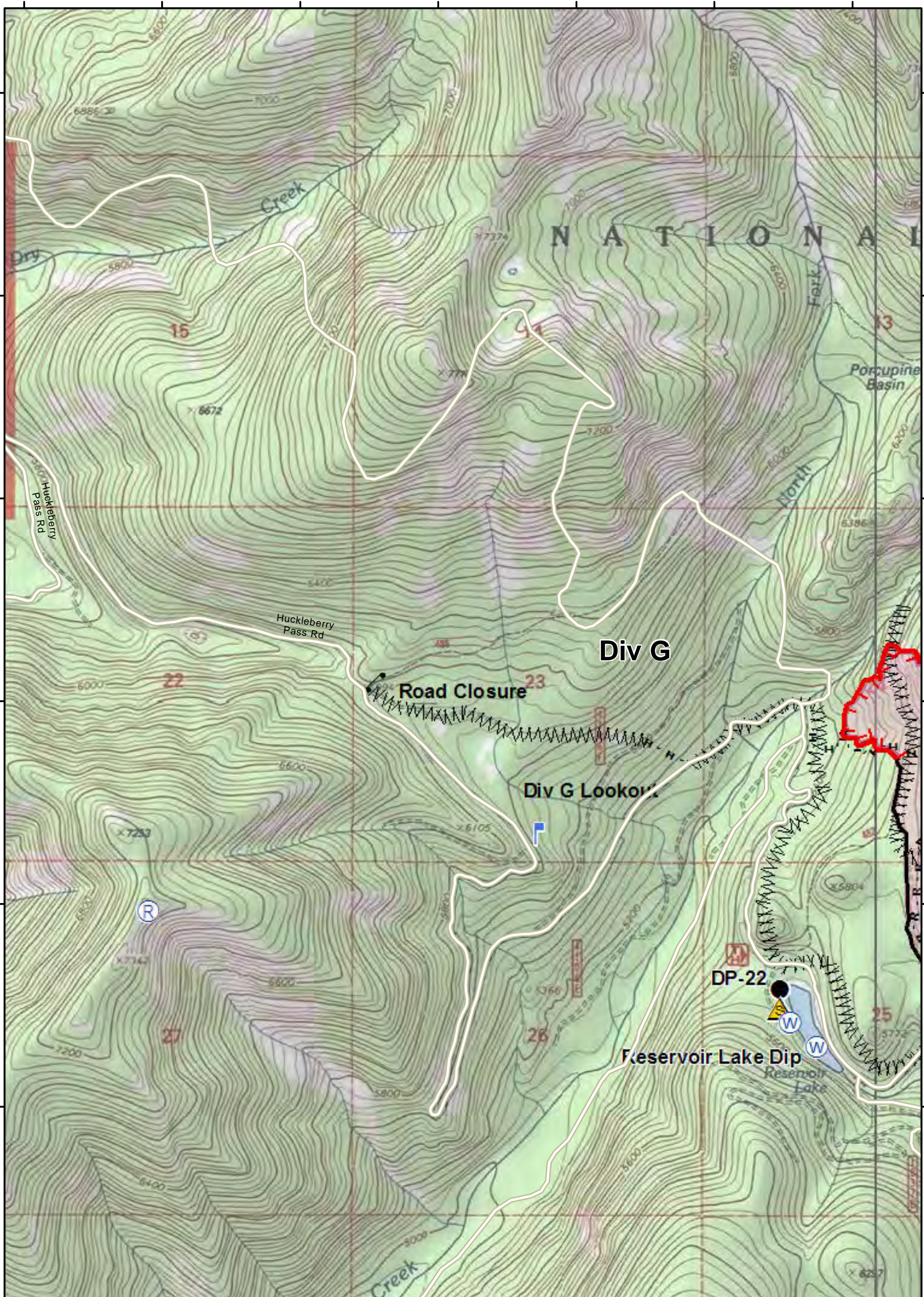
IAP Map
08/16/2017



PAGE: **E8**

112°32'30"W 112°32'0"W 112°31'30"W 112°31'0"W 112°30'30"W 112°30'0"W 112°29'30"W

112°51'30"W 112°51'0"W 112°50'30"W 112°50'0"W 112°49'30"W 112°49'0"W 112°48'30"W



Park Creek, Arrastra Creek & Alice Creek Fires
IAP Map
 08/16/2017

DMH

PAGE: **G2**

112°51'30"W 112°51'0"W 112°50'30"W 112°50'0"W 112°49'30"W 112°49'0"W 112°48'30"W

47°40'N
47°33'N
47°30'N
47°23'N
47°20'N
47°13'N
47°10'N

47°40'N
47°33'N
47°30'N
47°23'N
47°20'N
47°13'N
47°10'N

112°48'0"W

112°47'30"W

112°47'0"W

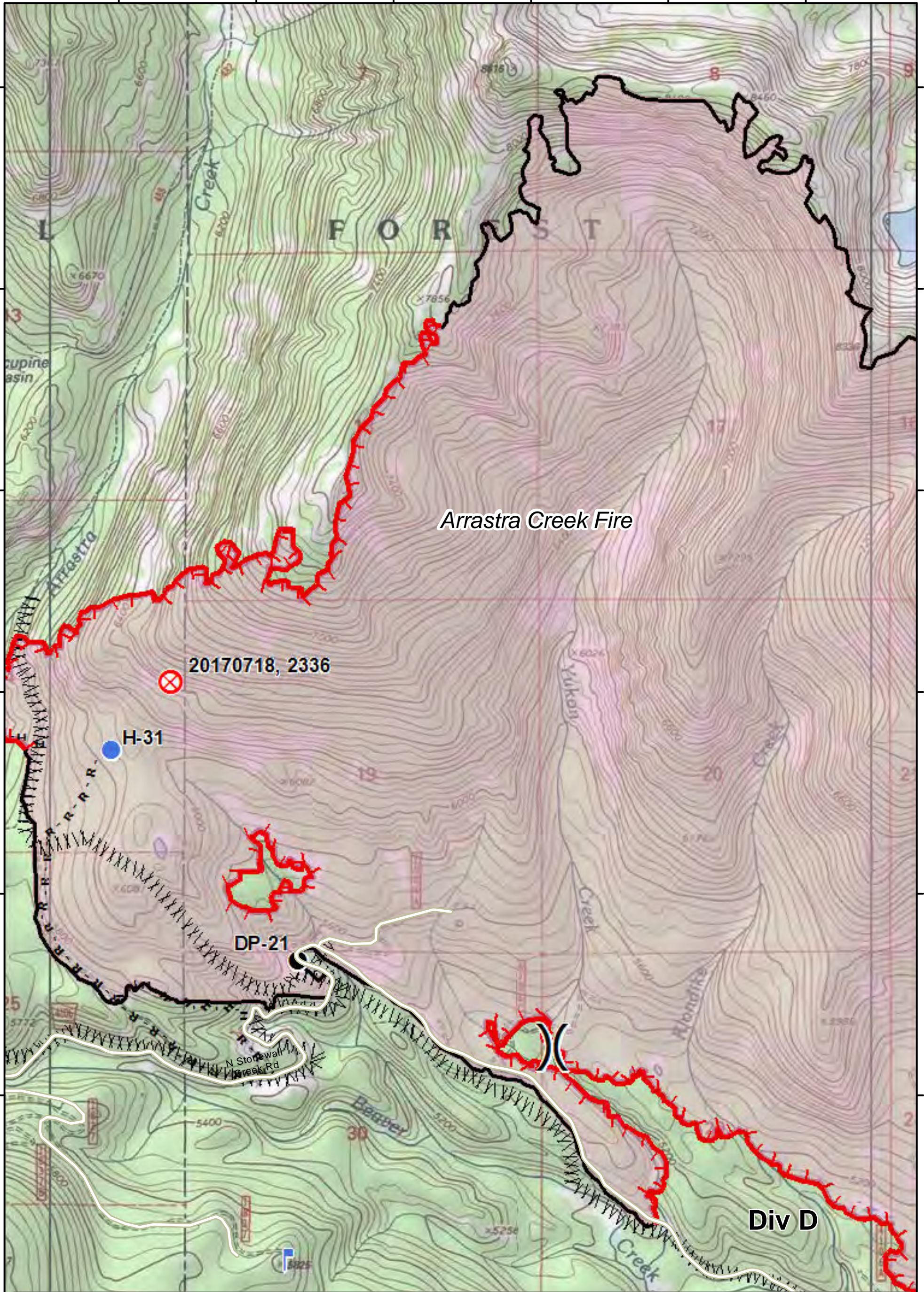
112°46'30"W

112°46'0"W

112°45'30"W

47°40'N
47°33'0"N
47°30'0"N
47°23'0"N
47°20'0"N
47°13'0"N
47°10'N

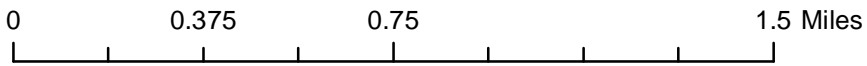
47°40'N
47°33'0"N
47°30'0"N
47°23'0"N
47°20'0"N
47°13'0"N
47°10'N



Park Creek, Arrastra Creek & Alice Creek Fires
IAP Map
 08/16/2017



DMH



PAGE: **G3**

112°48'0"W

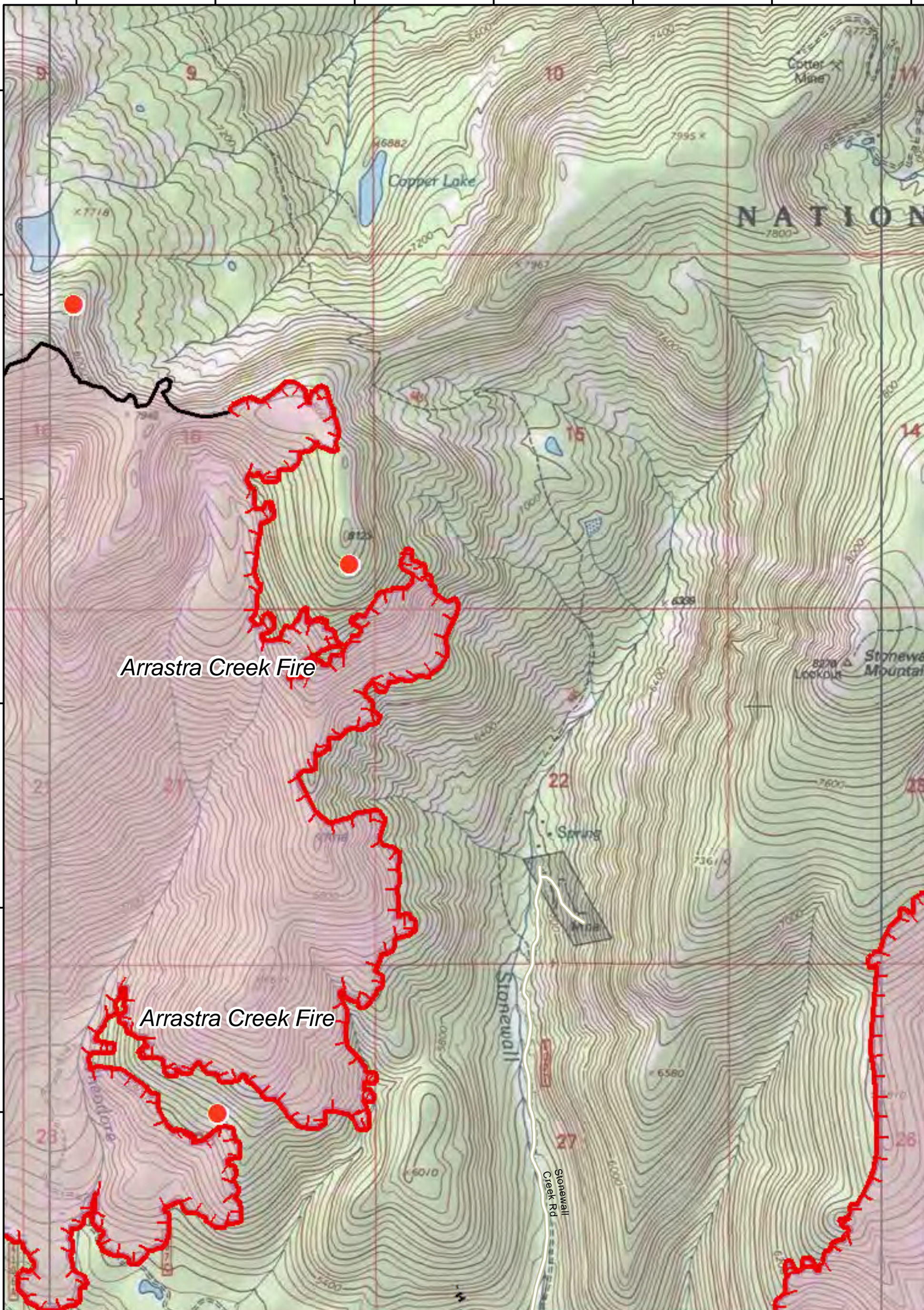
112°47'30"W

112°47'0"W

112°46'30"W

112°46'0"W

112°45'30"W



Arrastra Creek Fire

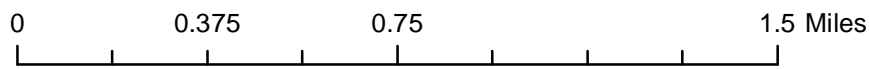
Arrastra Creek Fire

Park Creek, Arrastra Creek & Alice Creek Fires

IAP Map
08/16/2017



DMH

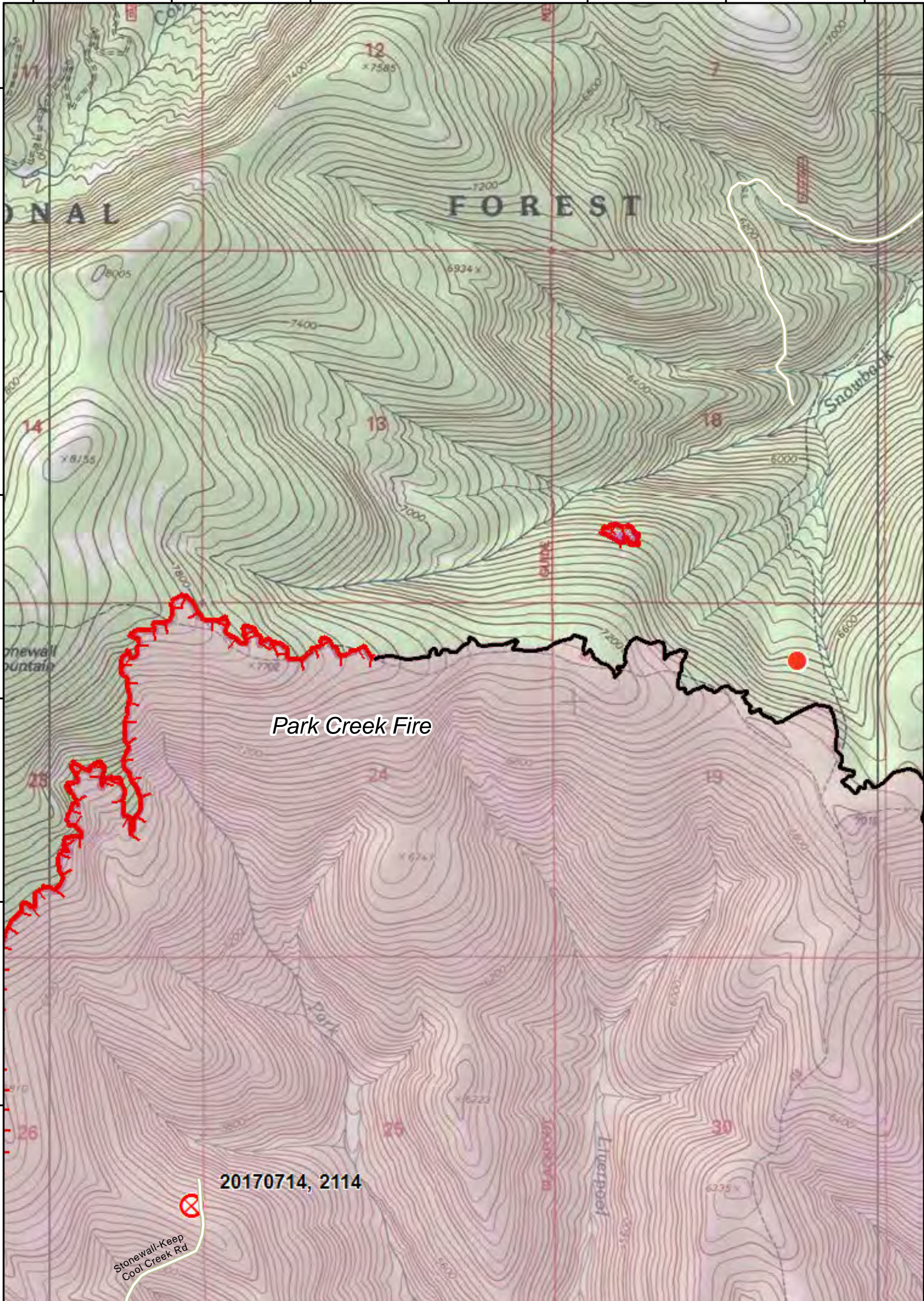


PAGE: **G4**

112°42'0"W 112°41'30"W 112°41'0"W 112°40'30"W 112°40'0"W 112°39'30"W 112°39'0"W

47°40'N
47°33'N
47°30'N
47°23'N
47°20'N
47°13'N
47°10'N

47°40'N
47°33'N
47°30'N
47°23'N
47°20'N
47°13'N
47°10'N



Park Creek Fire

20170714, 2114

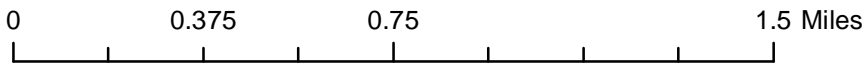
Stonewall-Keep Cool Creek Rd



DMH



Park Creek, Arrastra Creek & Alice Creek Fires
IAP Map
08/16/2017

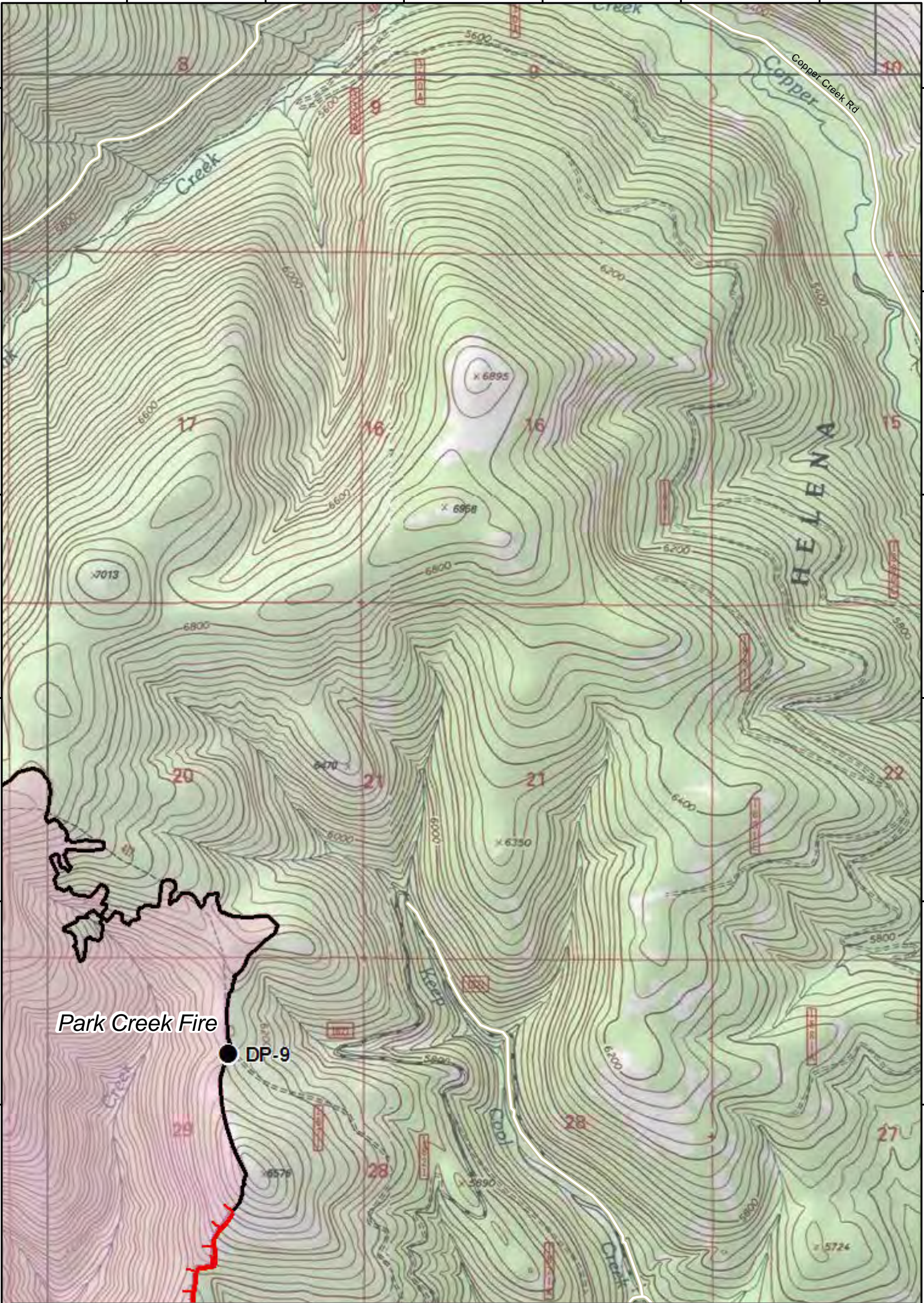


112°42'0"W 112°41'30"W 112°41'0"W 112°40'30"W 112°40'0"W 112°39'30"W 112°39'0"W

112°38'30"W 112°38'0"W 112°37'30"W 112°37'0"W 112°36'30"W 112°36'0"W

47°40'N
47°33'N
47°30'N
47°23'N
47°20'N
47°13'N
47°10'N

47°40'N
47°33'N
47°30'N
47°23'N
47°20'N
47°13'N
47°10'N



Park Creek Fire

DP-9

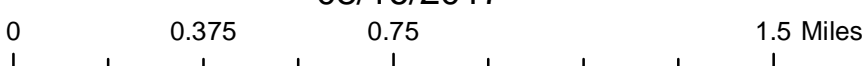
HELENA

Park Creek, Arrastra Creek & Alice Creek Fires

IAP Map
08/16/2017



DMH



PAGE: **G6**

112°38'30"W 112°38'0"W 112°37'30"W 112°37'0"W 112°36'30"W 112°36'0"W

112°48'0"W

112°47'30"W

112°47'0"W

112°46'30"W

112°46'0"W

112°45'30"W

47°0'30"N

47°0'0"N

46°59'30"N

46°59'0"N

46°58'30"N

46°58'0"N

46°57'30"N

47°0'30"N

47°0'0"N

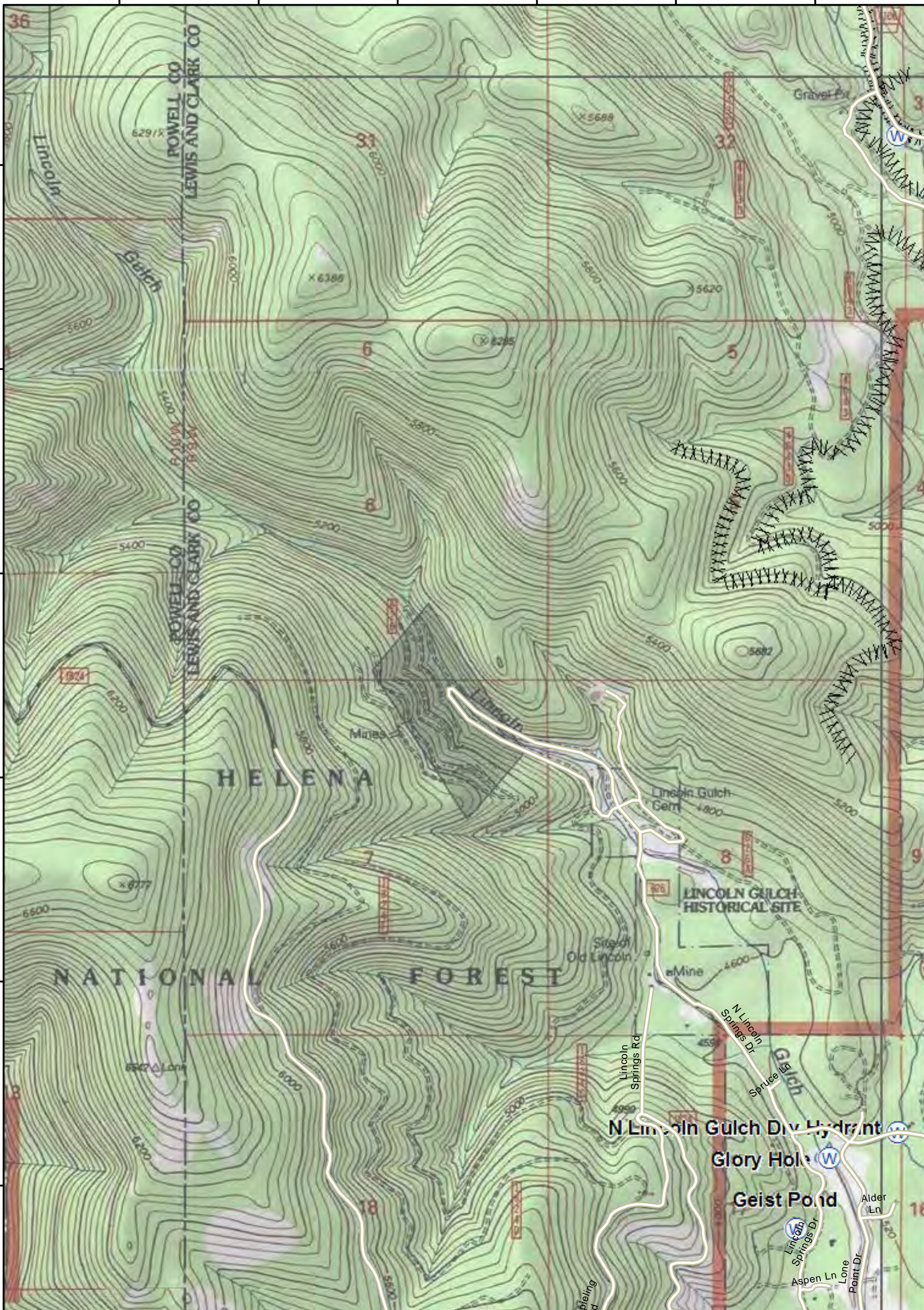
46°59'30"N

46°59'0"N

46°58'30"N

46°58'0"N

46°57'30"N



Park Creek, Arrastra Creek & Alice Creek Fires

IAP Map

08/16/2017



DMH



0 0.375 0.75 1.5 Miles



PAGE: **H3**

112°48'0"W

112°47'30"W

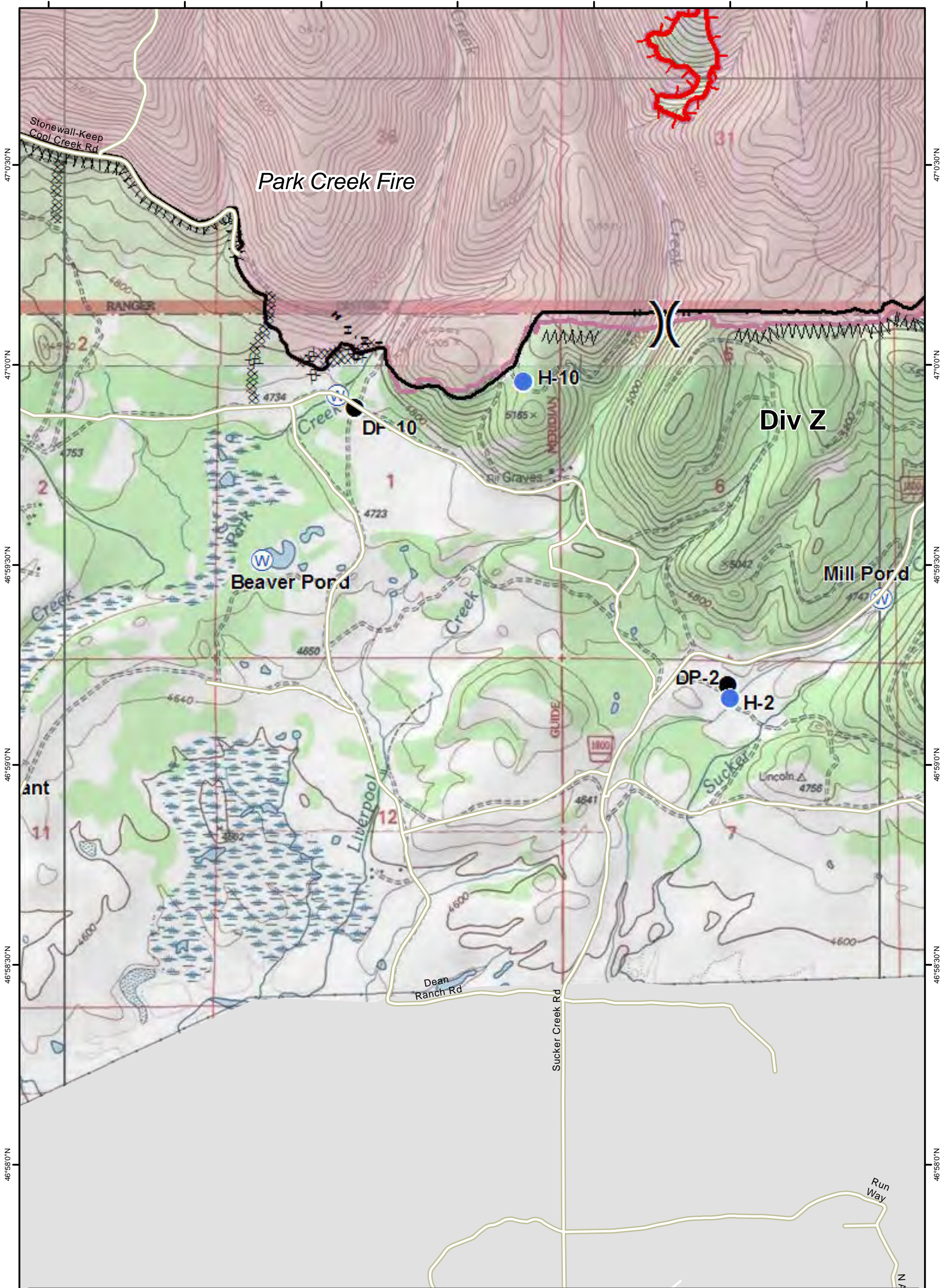
112°47'0"W

112°46'30"W


112°46'0"W

112°45'30"W


112°42'0"W 112°41'30"W 112°41'0"W 112°40'30"W 112°40'0"W 112°39'30"W 112°39'0"W

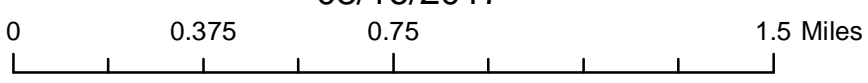



Park Creek, Arrastra Creek & Alice Creek Fires
IAP Map
08/16/2017



DMH







PAGE: **H5**

112°42'0"W 112°41'30"W 112°41'0"W 112°40'30"W 112°40'0"W 112°39'30"W 112°39'0"W

112°38'30"W 112°38'0"W 112°37'30"W 112°37'0"W 112°36'30"W 112°36'0"W

Park Creek Fire

DP-7

Sucker Creek Rd

Sucker Creek Rd

DP-3

HELENA NATIONAL FOREST

HELENA NATIONAL FOREST

HELENA NATIONAL FOREST

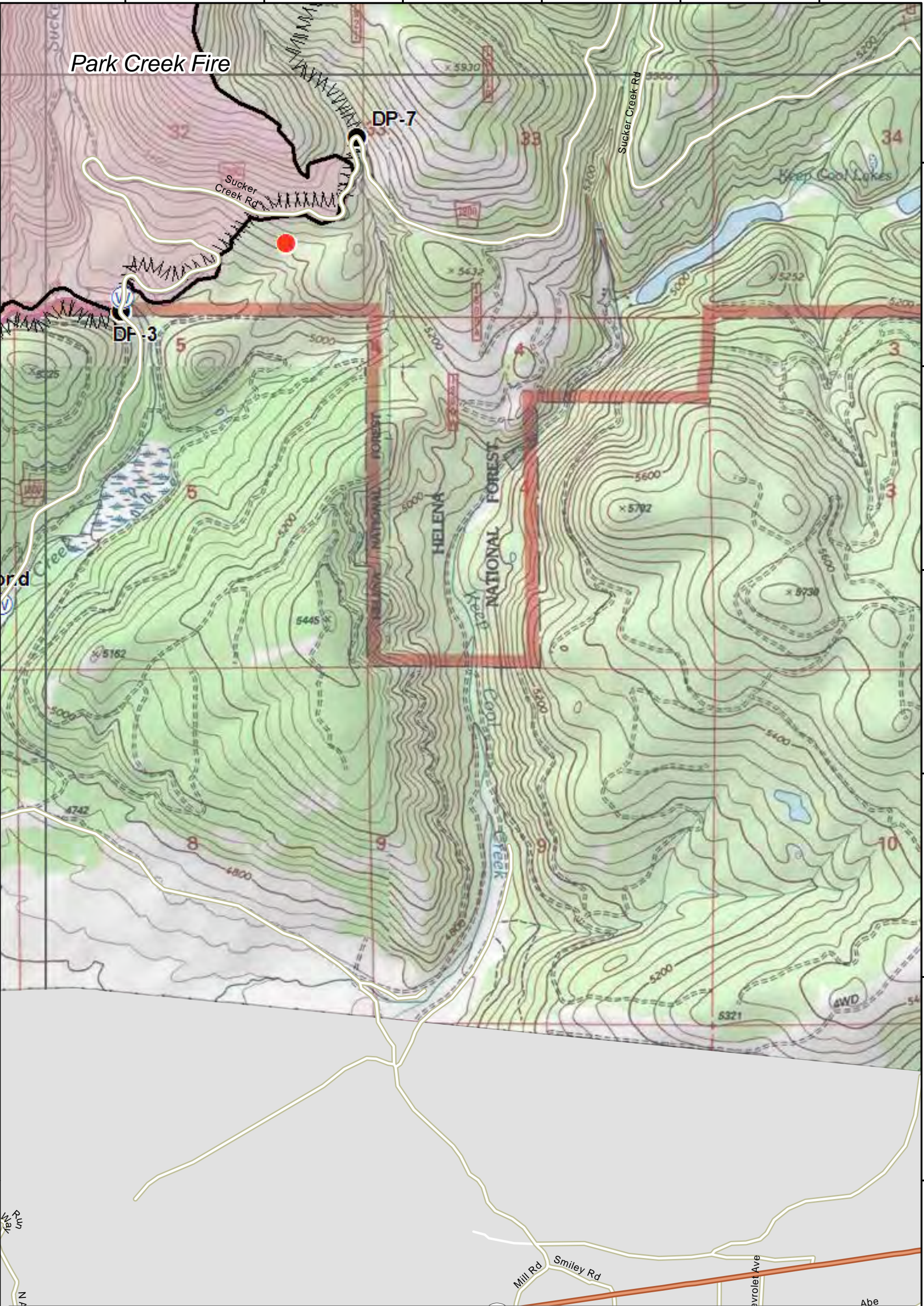
HELENA NATIONAL FOREST

HELENA NATIONAL FOREST

HELENA NATIONAL FOREST

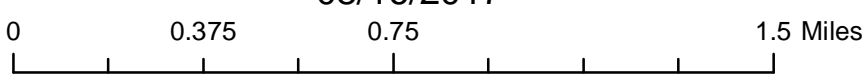
47°0'30"N
47°0'0"N
46°59'30"N
46°59'0"N
46°58'30"N
46°58'0"N
46°57'30"N

47°0'30"N
47°0'0"N
46°59'30"N
46°59'0"N
46°58'30"N
46°58'0"N
46°57'30"N



Park Creek, Arrastra Creek & Alice Creek Fires

IAP Map
08/16/2017



PAGE: H6

112°38'30"W 112°38'0"W 112°37'30"W 112°37'0"W 112°36'30"W 112°36'0"W