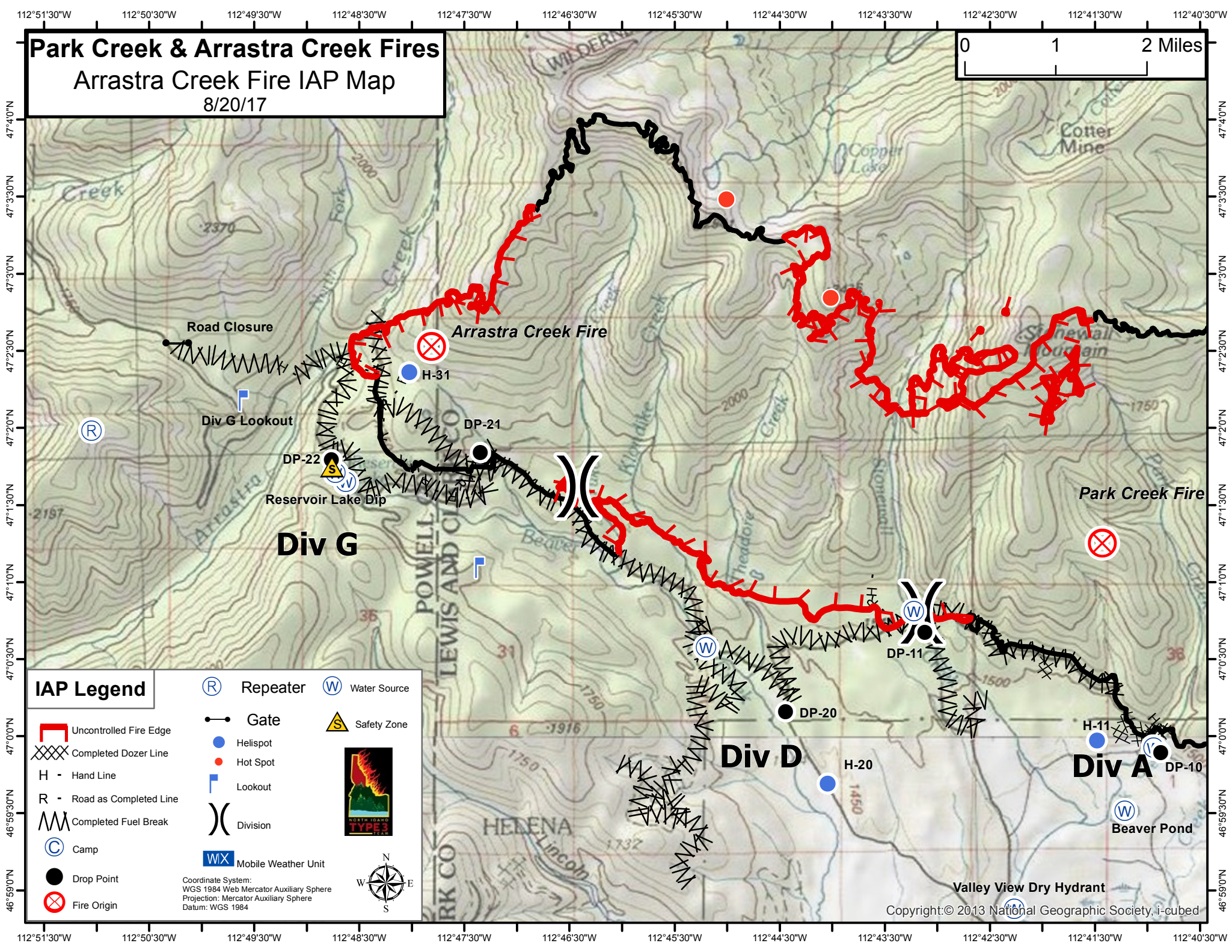
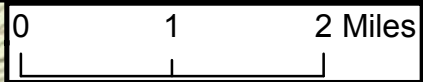


# Park Creek & Arrastra Creek Fires

## Arrastra Creek Fire IAP Map

8/20/17



### IAP Legend

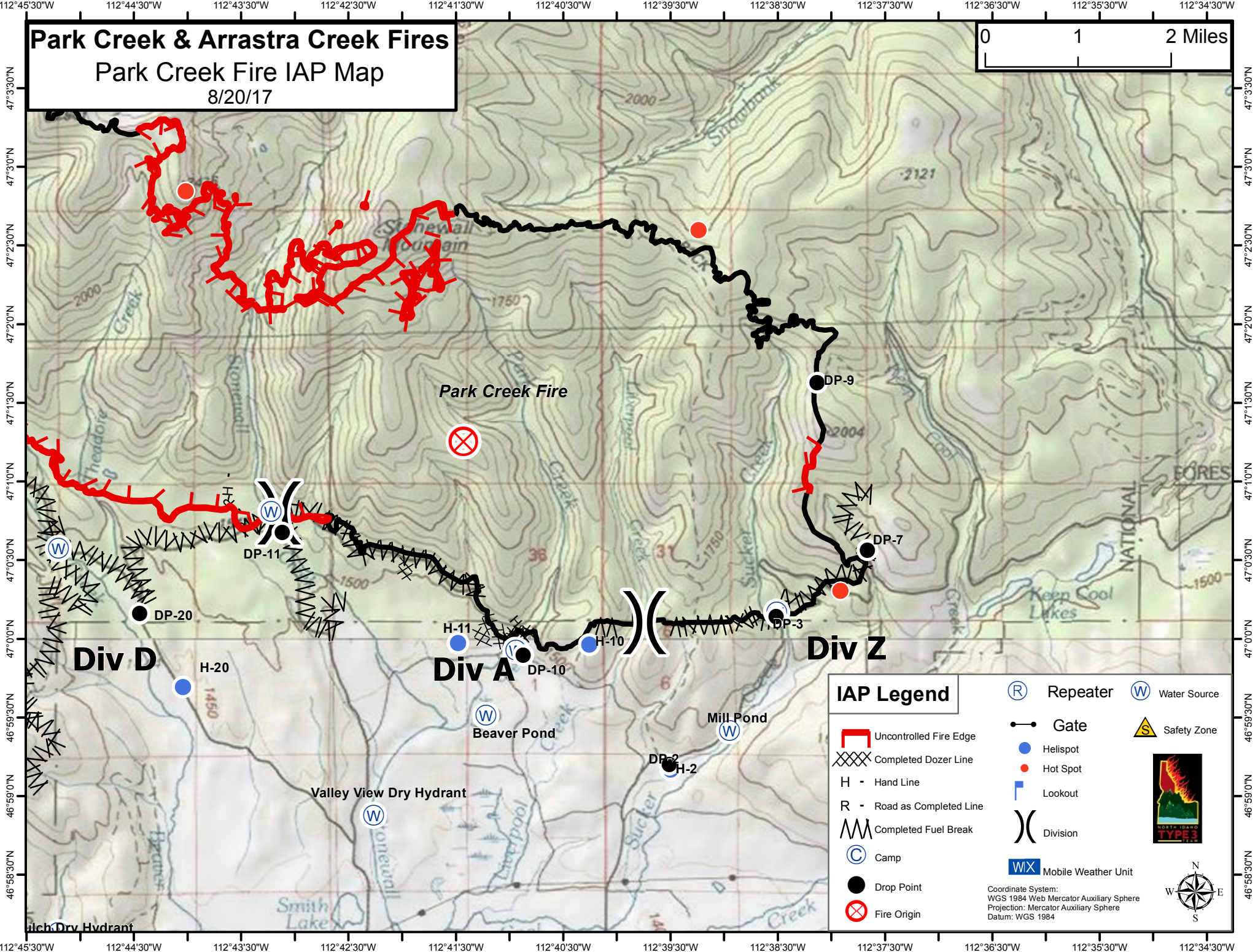
- Uncontrolled Fire Edge
- Completed Dozer Line
- Hand Line
- Road as Completed Line
- Completed Fuel Break
- Camp
- Drop Point
- Fire Origin
- Repeater
- Helispot
- Lookout
- Water Source
- Safety Zone
- Gate
- Hot Spot
- Mobile Weather Unit
- Division

Coordinate System:  
WGS 1984 Web Mercator Auxiliary Sphere  
Projection: Mercator Auxiliary Sphere  
Datum: WGS 1984





**Park Creek & Arrastra Creek Fires**  
**Park Creek Fire IAP Map**  
 8/20/17



Park Creek Fire

**Div D**

**Div A**

**Div Z**

**IAP Legend**

- Uncontrolled Fire Edge
  - Gate
  - Water Source
  - Helispot
  - Safety Zone
  - Completed Dozer Line
  - Repeater
  - Fire Origin
  - Hand Line
  - Camp
  - Drop Point
  - Lookout
  - Road as Completed Line
  - Completed Fuel Break
  - Division
  - Mobile Weather Unit
- Coordinate System:  
 WGS 1984 Web Mercator Auxiliary Sphere  
 Projection: Mercator Auxiliary Sphere  
 Datum: WGS 1984

