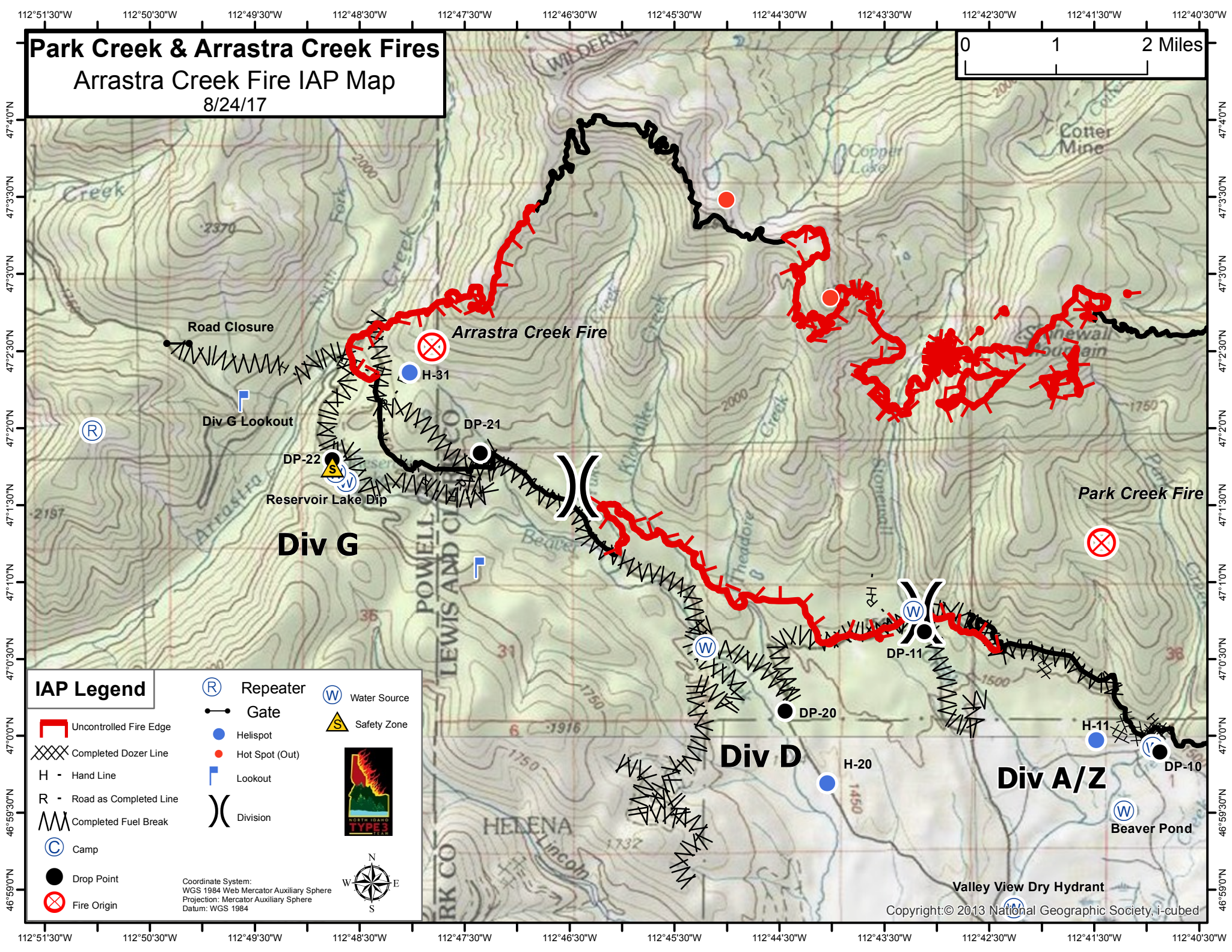
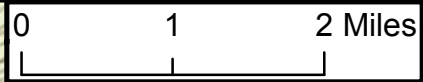


Park Creek & Arrastra Creek Fires

Arrastra Creek Fire IAP Map

8/24/17



IAP Legend

- Uncontrolled Fire Edge
- Completed Dozer Line
- Hand Line
- Road as Completed Line
- Completed Fuel Break
- Camp
- Drop Point
- Fire Origin
- Repeater
- Gate
- Helispot
- Water Source
- Safety Zone
- Lookout
- Division

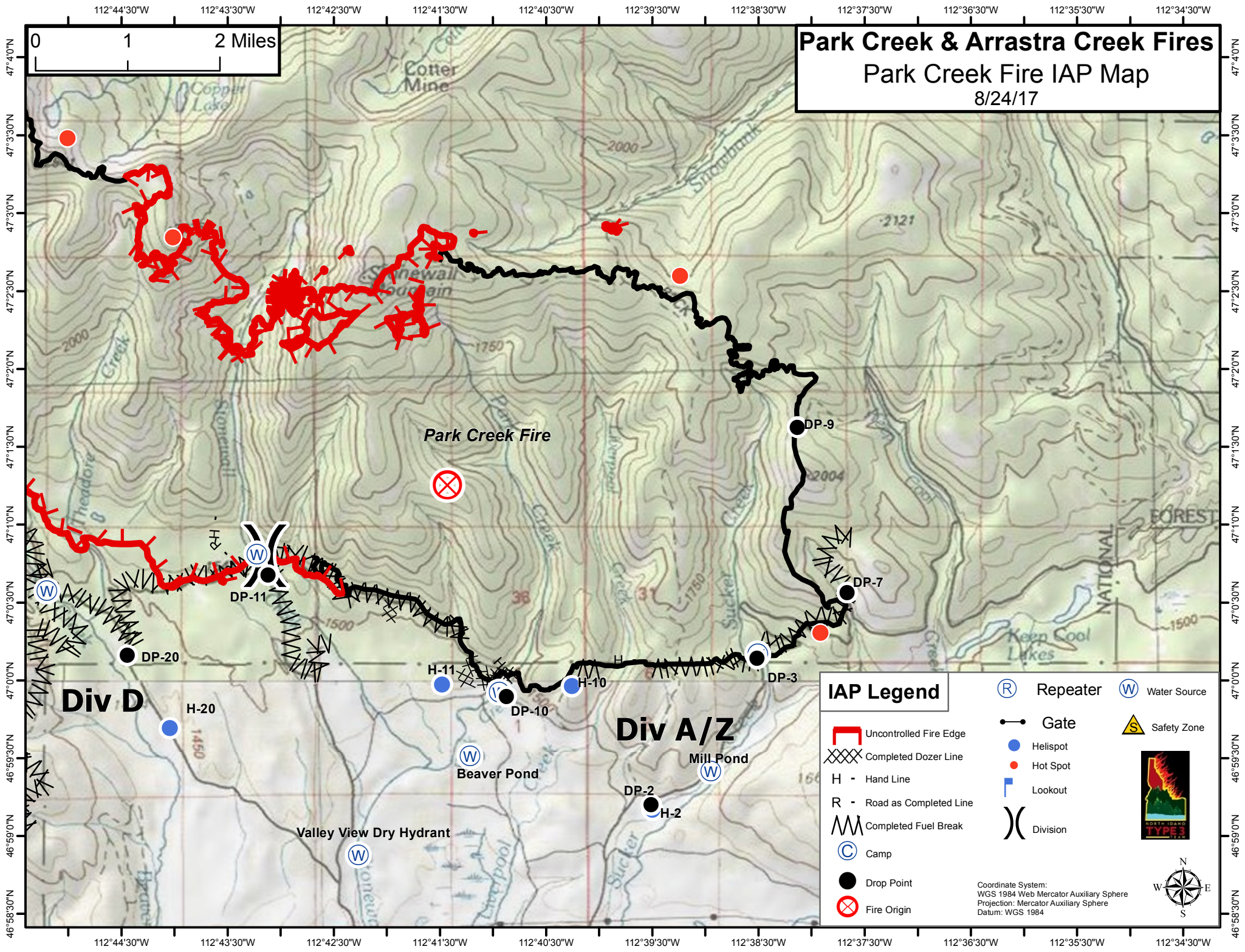
Coordinate System:
WGS 1984 Web Mercator Auxiliary Sphere
Projection: Mercator Auxiliary Sphere
Datum: WGS 1984



Park Creek & Arrastra Creek Fires

Park Creek Fire IAP Map

8/24/17



IAP Legend

- Uncontrolled Fire Edge
- Completed Dozer Line
- Hand Line
- Road as Completed Line
- Completed Fuel Break
- Camp
- Drop Point
- Fire Origin
- Repeater
- Gate
- Helispot
- Hot Spot
- Lookout
- Division
- Water Source
- Safety Zone

Coordinate System:
WGS 1984 Web Mercator Auxiliary Sphere
Projection: Mercator Auxiliary Sphere
Datum: WGS 1984



Div D

Div A/Z

Park Creek Fire

Beaver Pond

Mill Pond

Valley View Dry Hydrant

DP-11

DP-20

H-20

H-11

DP-10

H-10

DP-2

H-2

DP-9

DP-7

DP-3