

MAP 31
Condition: The Arrastra Creek fire has crossed an east west line roughly 1 mile to the north of the private property values approximately 1 mile up the Arrastra Creek drainage to the north and is likely to continue moving to the south onto private property.
Location: The MAP is roughly an east to west line across Arrastra Creek 1 mile up the drainage from the nearest private property.
Intent: This MAP is to ensure that measures are being taken prior to fire reaching the evacuation stage and notification of the residents living in the lower Arrastra Creek area.

MAP 30
Condition: Fire has crossed the MAP line and is established and likely to make it to the campground.
Location: MAP line starting at the ridgeline West of Cooper Creek in section 7, moving East towards Snowbank Creek, South to the ridge top in section 16.
Intent: The Copper Creek Campground is a popular Forest Service Campground used throughout the summer and fall. The campground is one of the few areas in the upper Copper Creek drainage that has a stand of green trees. This MAP is intended to provide adequate time for resources to set up a sprinkler system in the campground to reduce fire behavior as fire passes through/by the campground with the intent of keeping the impacts to live trees to a minimum.

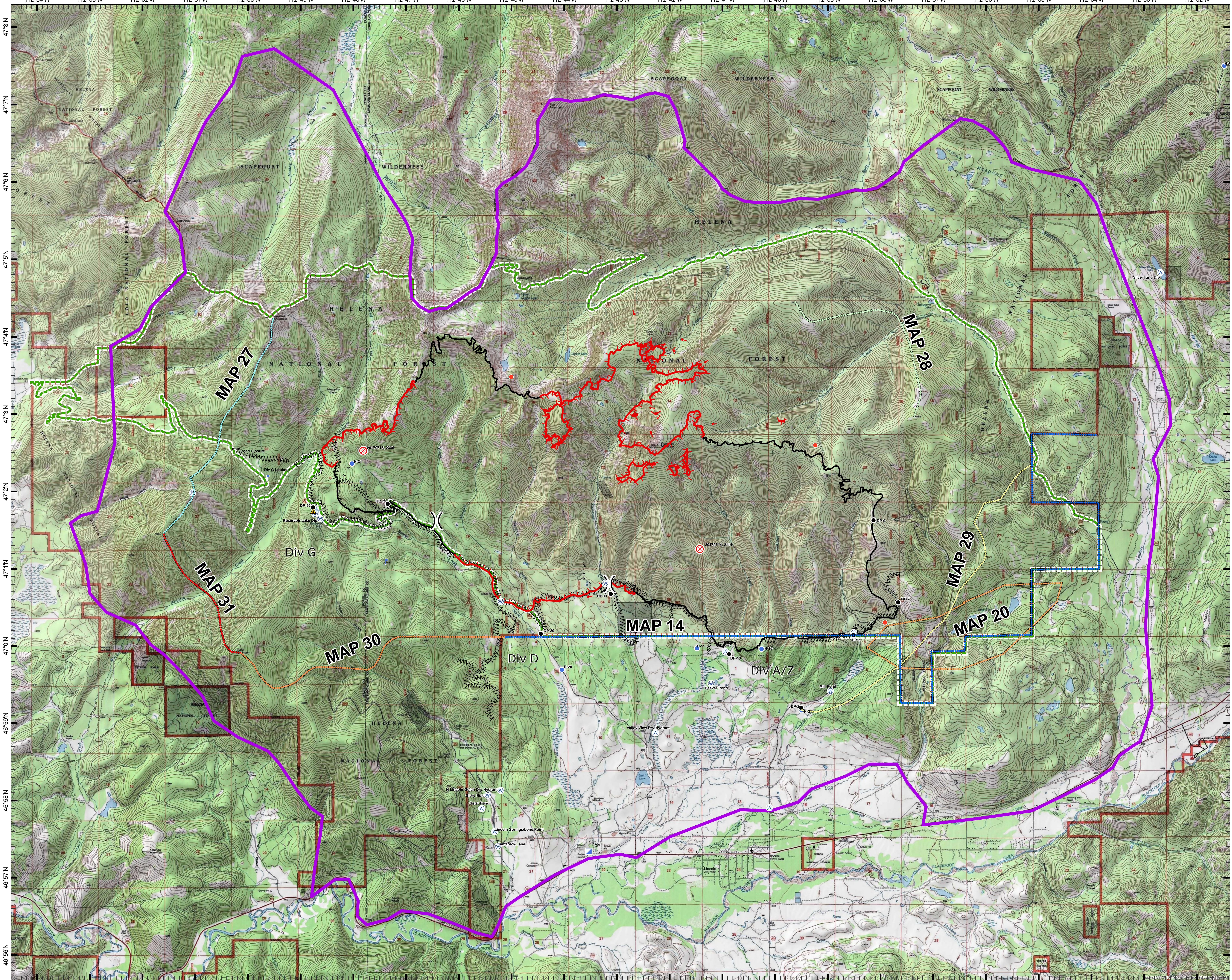
MAP 29
Condition: Fire has progressed to Keep Cool Lakes and is likely to continue aggressive southeasterly growth towards values located along Hwy 200.
Location: Starting at the section 7 near Sucker Creek, running Northeast to the ridge top in section 27 move down ridge to the forest boundary on section line midpoint of section 22/23.
Intent: This MAP is to ensure that measures are being taken prior to fire reaching the evacuation stage and notification of the residents living in the subdivisions at the confluence of Copper Creek and Landers Fork, confluence of Copper Creek and Landers Fork and the residents at the Elk Trail Landing Strip that if the fire continues to the east their access may be cutoff.

MAP 28
Condition: Fire has crossed the MAP line and fire progression is likely to continue towards private property and residences in the Lincoln Springs Subdivision.
Location: The MAP line starts on the top of Black Mountain moving Southeast following the ridgelines East of the County line following section line of section 6 to the corner line of the forest boundary.
Intent: Provide for protection of life and property in the Lincoln Springs Subdivision.

MAP 27
Condition: The Arrastra Creek Fire has crested the ridge line to the West of Arrastra Creek and fire movement is likely to continue to the west towards private property.
Location: The MAP follows the ridge line located to the West of Arrastra Creek from the northern edge to the southern edge of the Fire Planning Area.
Intent: To provide adequate time for containment lines to be completed before fire reaches values.

MAP 20
Condition: Fire is likely to enter the MAP area.
Location: This MAP is a ring buffering the Keep Cool Lakes by approximately 1 mile.
Intent: The "Road to the Buffalo" is a historic aboriginal travel route to the buffalo grounds on the east side of the continental divide. The Keep Cool Lakes area is in this travel corridor. This MAP is designed to ensure that communications are occurring between the operations sections and the heritage resources to ensure that suppression operations do not damage cultural resources that may be in the area

MAP 14
Condition: Fire has left National Forest lands and has crossed onto Montana DNRC or private lands.
Location: Forest Service Boundary within the Fire Planning Area.
Intent: To determine if a Unified Command is warranted

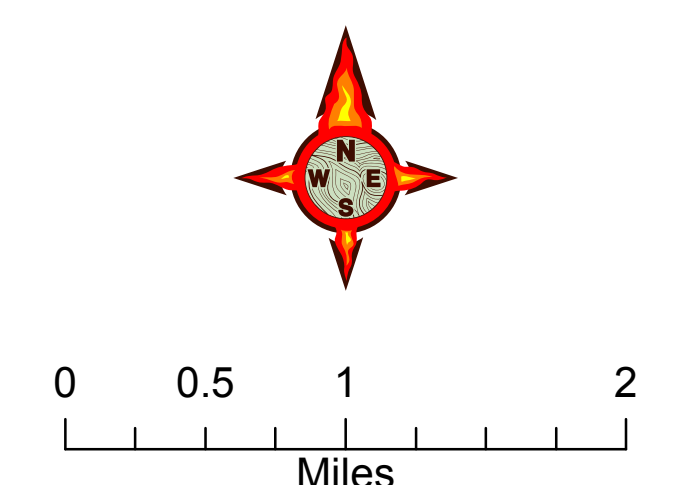


M.A.P. MAP
 Park Creek Fire
 September 1, 2017

- | | | | | |
|------------------------|--------|----------------------|-----------------------|------------------------|
| Planning Area | MAP 28 | Drop Point | Lookout | Uncontrolled Fire Edge |
| Team IA Responsibility | MAP 29 | Fire Origin | Repeater | Completed Line |
| MAP 14 | MAP 30 | Gate | Safety Zone | Completed Dozer Line |
| MAP 20 | MAP 31 | Helispot | Water Source | Completed Hand Line |
| MAP 27 | | Hot Spot | Incident Command Post | Road as Completed Line |
| | | Division Break | | Road as Completed Line |
| | | Line Break Completed | | Line Break Completed |



MANAGEMENT ACTION POINTS Map
 Park Creek Incident
 September 1, 2017



M.A.P. MAP
 Park Creek Fire
 September 1, 2017