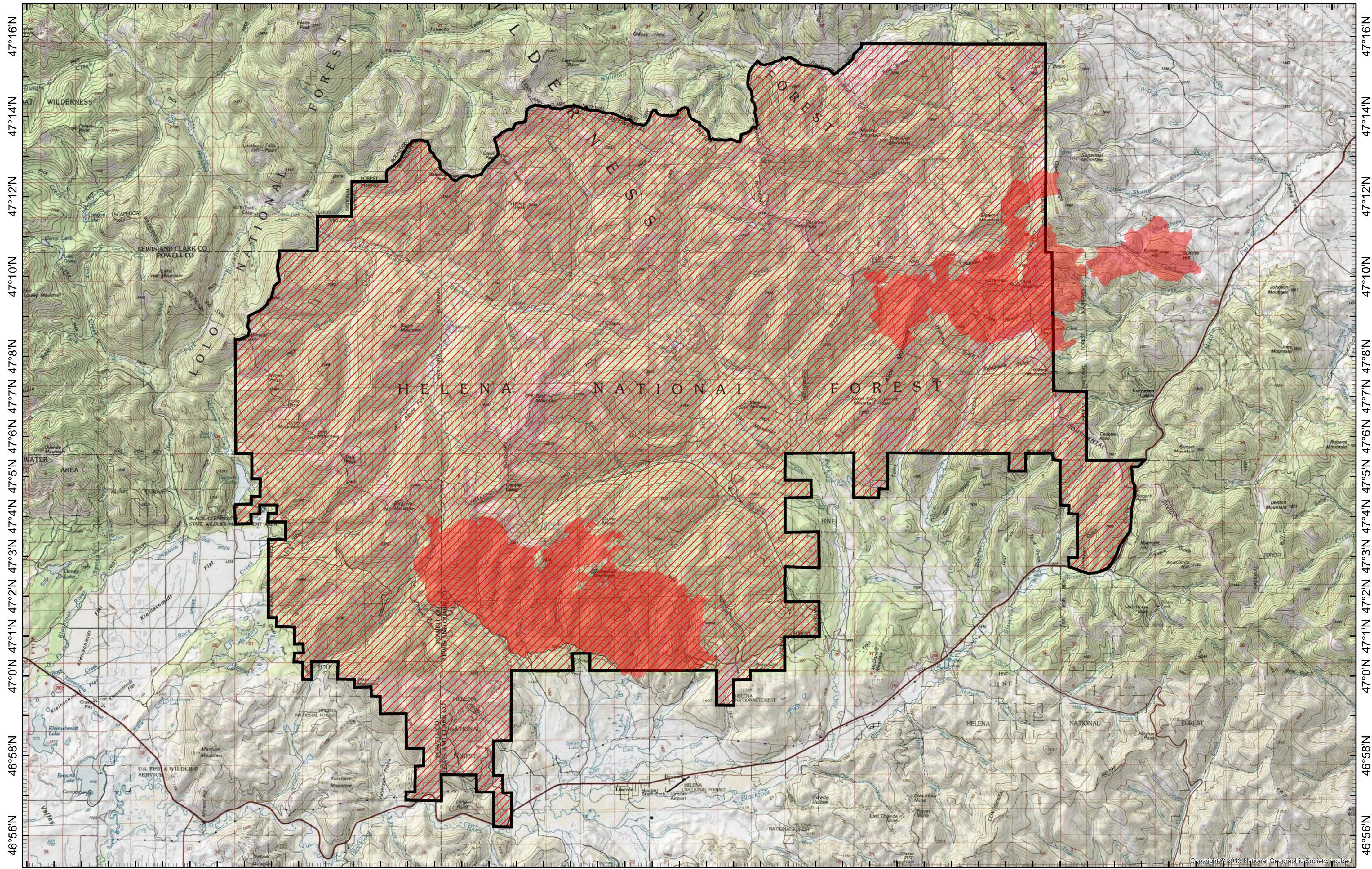


113°3'W 113°1'W 112°59'W 112°57'W 112°55'W 112°53'W 112°51'W 112°49'W 112°47'W 112°45'W 112°43'W 112°41'W 112°39'W 112°37'W 112°35'W 112°33'W 112°31'W 112°29'W 112°27'W 112°25'W 112°23'W 112°21'W 112°19'W 112°17'W 112°15'W



113°3'W 113°1'W 112°59'W 112°57'W 112°55'W 112°53'W 112°51'W 112°49'W 112°47'W 112°45'W 112°43'W 112°41'W 112°39'W 112°37'W 112°35'W 112°33'W 112°31'W 112°29'W 112°27'W 112°25'W 112°23'W 112°21'W 112°19'W 112°17'W 112°15'W



Heat Perimeter



Updated Area Closure, includes roads & trails



AREA CLOSURE MAP

Park Creek Incident

Cloure Order 18.42.07.032

September 3, 2017

All Landlines Approximate

ATTENTION

This product is reproduced from geospatial information prepared by the U.S. Department of Agriculture, Forest Service. GIS data and product accuracy may vary. They may be developed from sources of differing accuracy, accurate only at certain scales, based on modeling or interpretation, incomplete while being created or revised, etc. Using GIS products for purposes other than those for which they were created, may yield inaccurate or misleading results. This information was released on Date: 9/3/17. The Forest Service reserves the right to correct, update, modify, or replace, GIS products without notification.

