

**Park Creek Fire**  
 MT-HLF-000146  
 Sept. 6, 2017  
 Day Shift  
 Approx. 16402 ac  
 as of 9/5/2017  
 at 22:36 hrs.

**Legend**

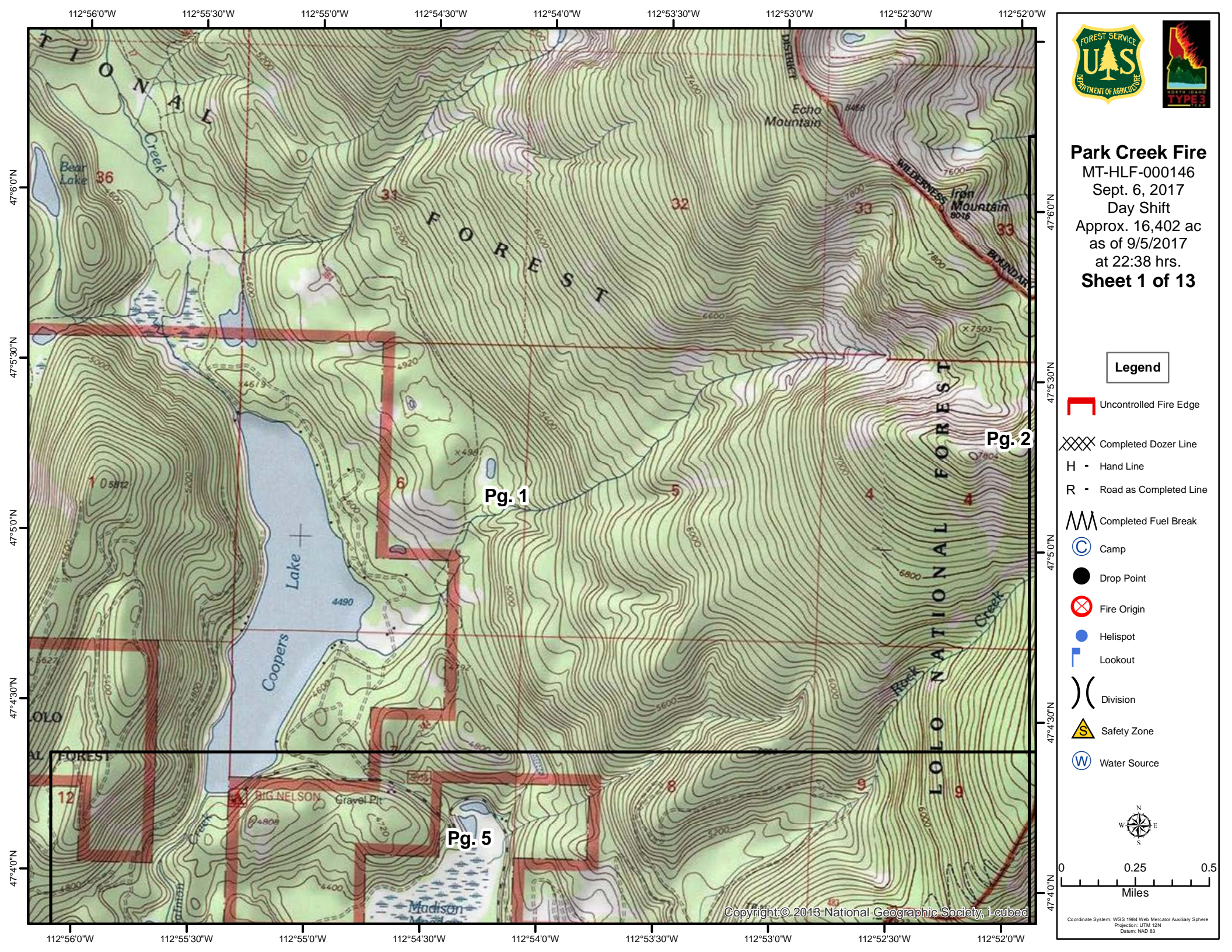
- Uncontrolled Fire Edge
- Completed Dozer Line
- Hand Line
- Road as Completed Line
- Completed Fuel Break
- Camp
- Drop Point
- Fire Origin
- Helispot
- Lookout
- Division
- Safety Zone
- Water Source



Copyright © 2013 National Geographic Society, i-cubed

Coordinate System: WGS 1984 Web Mercator Auxiliary Sphere  
 Projection: UTM 12N  
 Datum: NAD 83

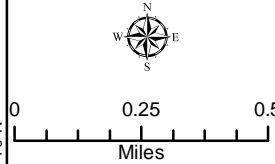




**Park Creek Fire**  
 MT-HLF-000146  
 Sept. 6, 2017  
 Day Shift  
 Approx. 16,402 ac  
 as of 9/5/2017  
 at 22:38 hrs.  
**Sheet 1 of 13**

**Legend**

- Uncontrolled Fire Edge
- Completed Dozer Line
- Hand Line
- Road as Completed Line
- Completed Fuel Break
- Camp
- Drop Point
- Fire Origin
- Helispot
- Lookout
- Division
- Safety Zone
- Water Source



Coordinate System: WGS 1984 Web Mercator Auxiliary Sphere  
 Projection: UTM T2N  
 Datum: NAD 83

Pg. 2

Pg. 1

Pg. 5

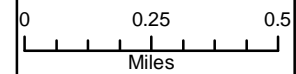




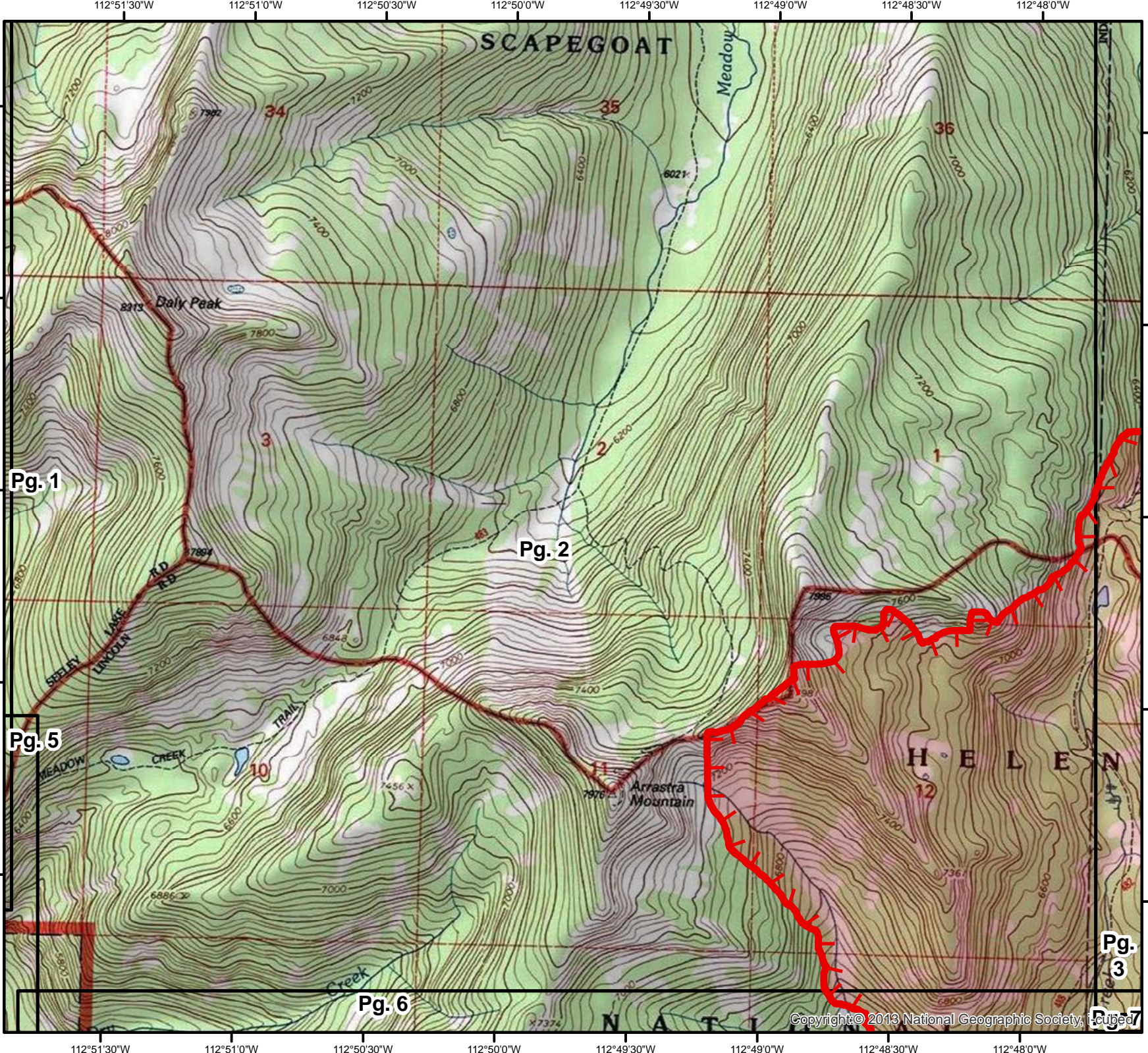
**Park Creek Fire**  
 MT-HLF-000146  
 Sept. 6, 2017  
 Day Shift  
 Approx. 16,402 ac  
 as of 9/5/2017  
 at 22:38 hrs.  
**Sheet 2 of 13**

**Legend**

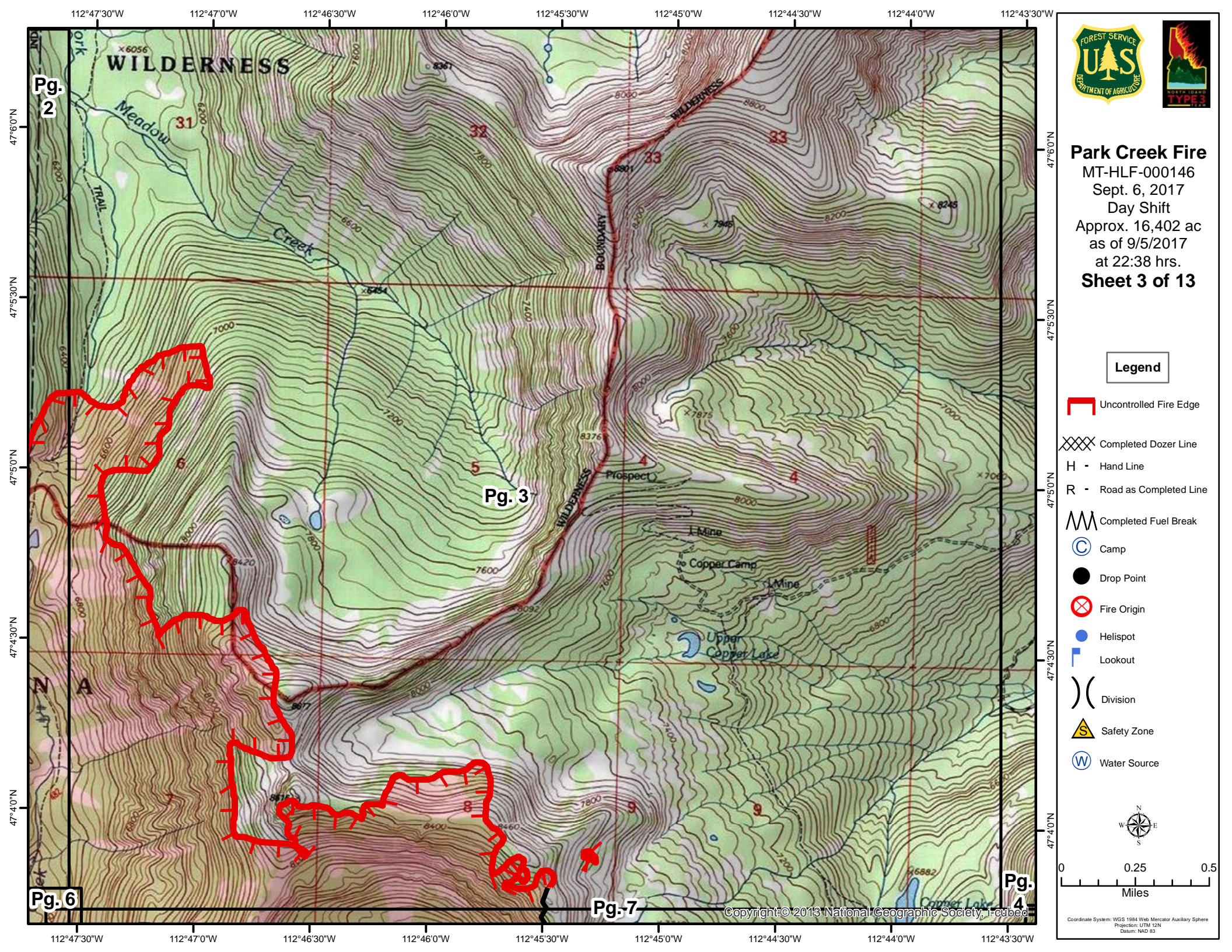
- Uncontrolled Fire Edge
- Completed Dozer Line
- Hand Line
- Road as Completed Line
- Completed Fuel Break
- Camp
- Drop Point
- Fire Origin
- Helispot
- Lookout
- Division
- Safety Zone
- Water Source



Coordinate System: WGS 1984 Web Mercator Auxiliary Sphere  
 Projection: UTM 12N  
 Datum: NAD 83



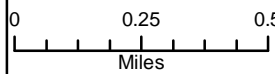




**Park Creek Fire**  
 MT-HLF-000146  
 Sept. 6, 2017  
 Day Shift  
 Approx. 16,402 ac  
 as of 9/5/2017  
 at 22:38 hrs.  
**Sheet 3 of 13**

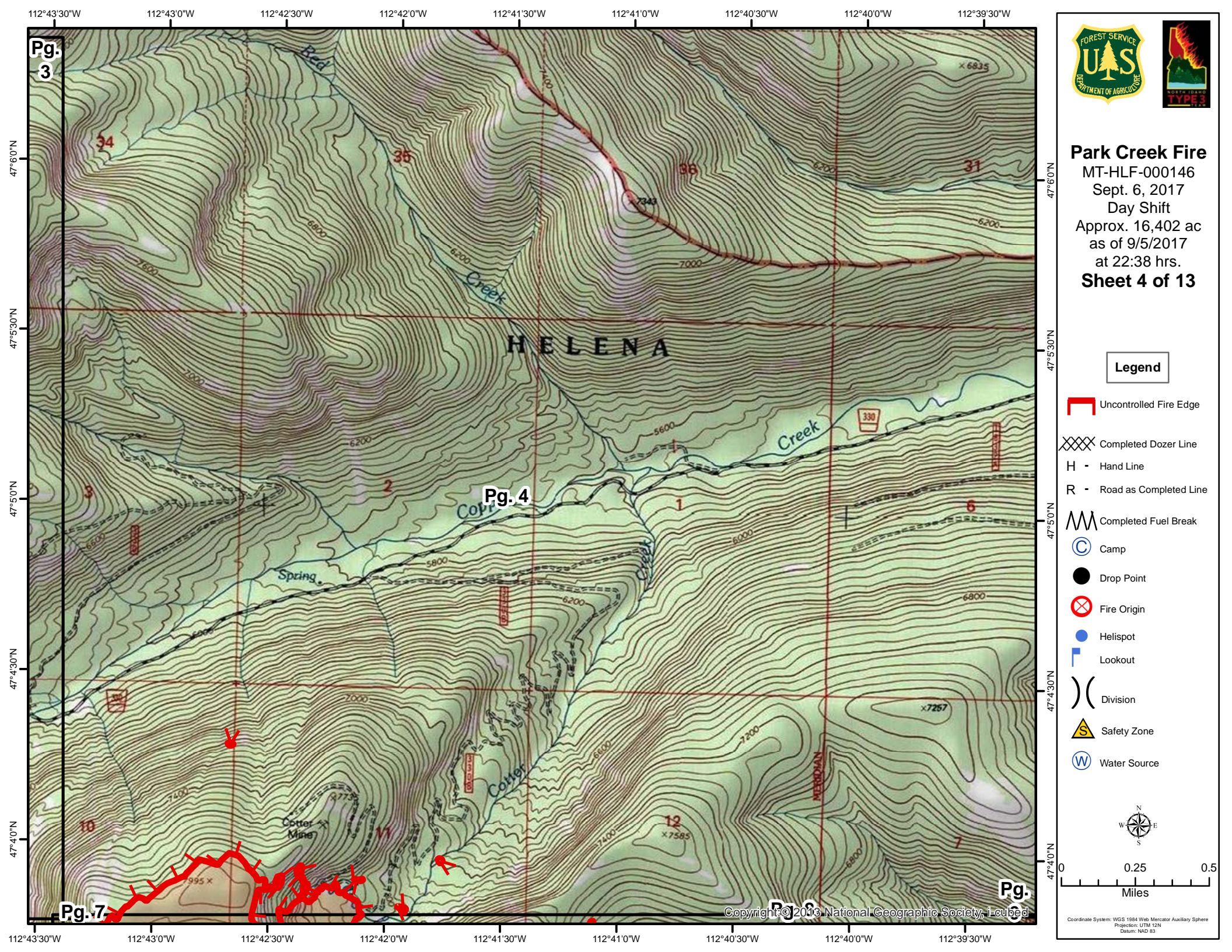
**Legend**

- Uncontrolled Fire Edge
- Completed Dozer Line
- Hand Line
- Road as Completed Line
- Completed Fuel Break
- Camp
- Drop Point
- Fire Origin
- Helispot
- Lookout
- Division
- Safety Zone
- Water Source



Coordinate System: WGS 1984 Web Mercator Auxiliary Sphere  
 Projection: UTM 12N  
 Datum: NAD 83





Pg. 3

Pg. 4

Pg. 7

Pg. 8

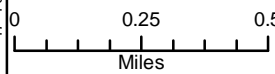
Pg. 9



**Park Creek Fire**  
 MT-HLF-000146  
 Sept. 6, 2017  
 Day Shift  
 Approx. 16,402 ac  
 as of 9/5/2017  
 at 22:38 hrs.  
**Sheet 4 of 13**

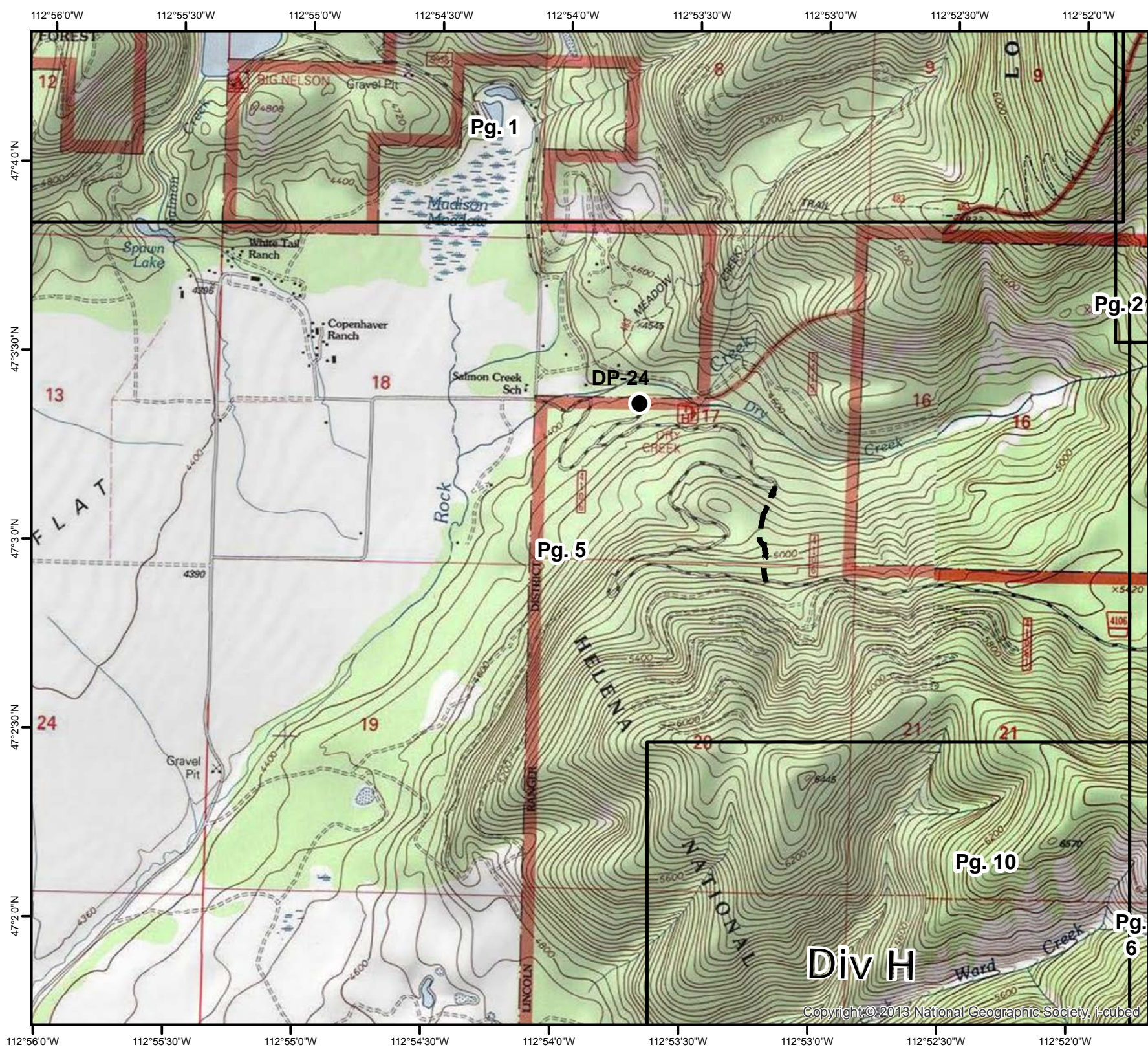
**Legend**

- Uncontrolled Fire Edge
- Completed Dozer Line
- Hand Line
- Road as Completed Line
- Completed Fuel Break
- Camp
- Drop Point
- Fire Origin
- Helispot
- Lookout
- Division
- Safety Zone
- Water Source



Coordinate System: WGS 1984 Web Mercator Auxiliary Sphere  
 Projection: UTM 12N  
 Datum: NAD 83

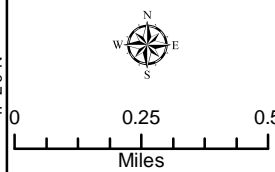




**Park Creek Fire**  
 MT-HLF-000146  
 Sept. 6, 2017  
 Day Shift  
 Approx. 16,402 ac  
 as of 9/5/2017  
 at 22:38 hrs.  
**Sheet 5 of 13**

**Legend**

- Uncontrolled Fire Edge
- Completed Dozer Line
- H - Hand Line
- R - Road as Completed Line
- Completed Fuel Break
- Camp
- Drop Point
- Fire Origin
- Helispot
- Lookout
- Division
- Safety Zone
- Water Source

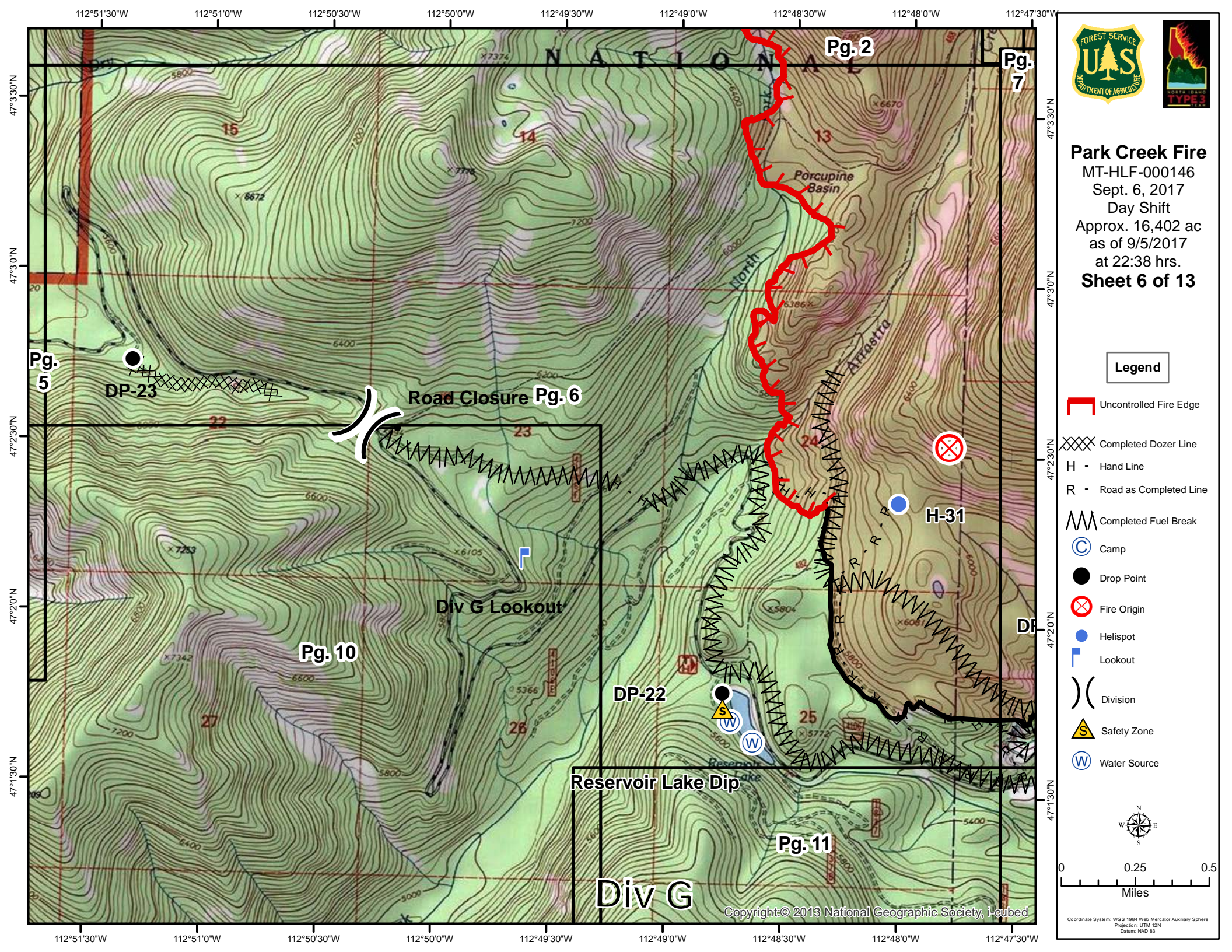


Coordinate System: WGS 1984 Web Mercator Auxiliary Sphere  
 Projection: UTM 12N  
 Datum: NAD 83

**Div H**

Copyright © 2013 National Geographic Society, i-cubed

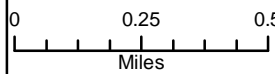




**Park Creek Fire**  
 MT-HLF-000146  
 Sept. 6, 2017  
 Day Shift  
 Approx. 16,402 ac  
 as of 9/5/2017  
 at 22:38 hrs.  
**Sheet 6 of 13**

**Legend**

- Uncontrolled Fire Edge
- Completed Dozer Line
- Hand Line
- Road as Completed Line
- Completed Fuel Break
- Camp
- Drop Point
- Fire Origin
- Helispot
- Lookout
- Division
- Safety Zone
- Water Source



Coordinate System: WGS 1984 Web Mercator Auxiliary Sphere  
 Projection: UTM T2N  
 Datum: NAD 83

Pg. 2

Pg. 7

Pg. 5

Road Closure Pg. 6

Pg. 10

Pg. 11

**Div G**

DP-23

Div G Lookout

DP-22

Reservoir Lake Dip

H-31

DP

Reservoir Lake

Porcupine Basin

North

Atrostrita

15

14

13

22

23

24

27

26

25

112°51'30"W 112°51'0"W 112°50'30"W 112°50'0"W 112°49'30"W 112°49'0"W 112°48'30"W 112°48'0"W 112°47'30"W

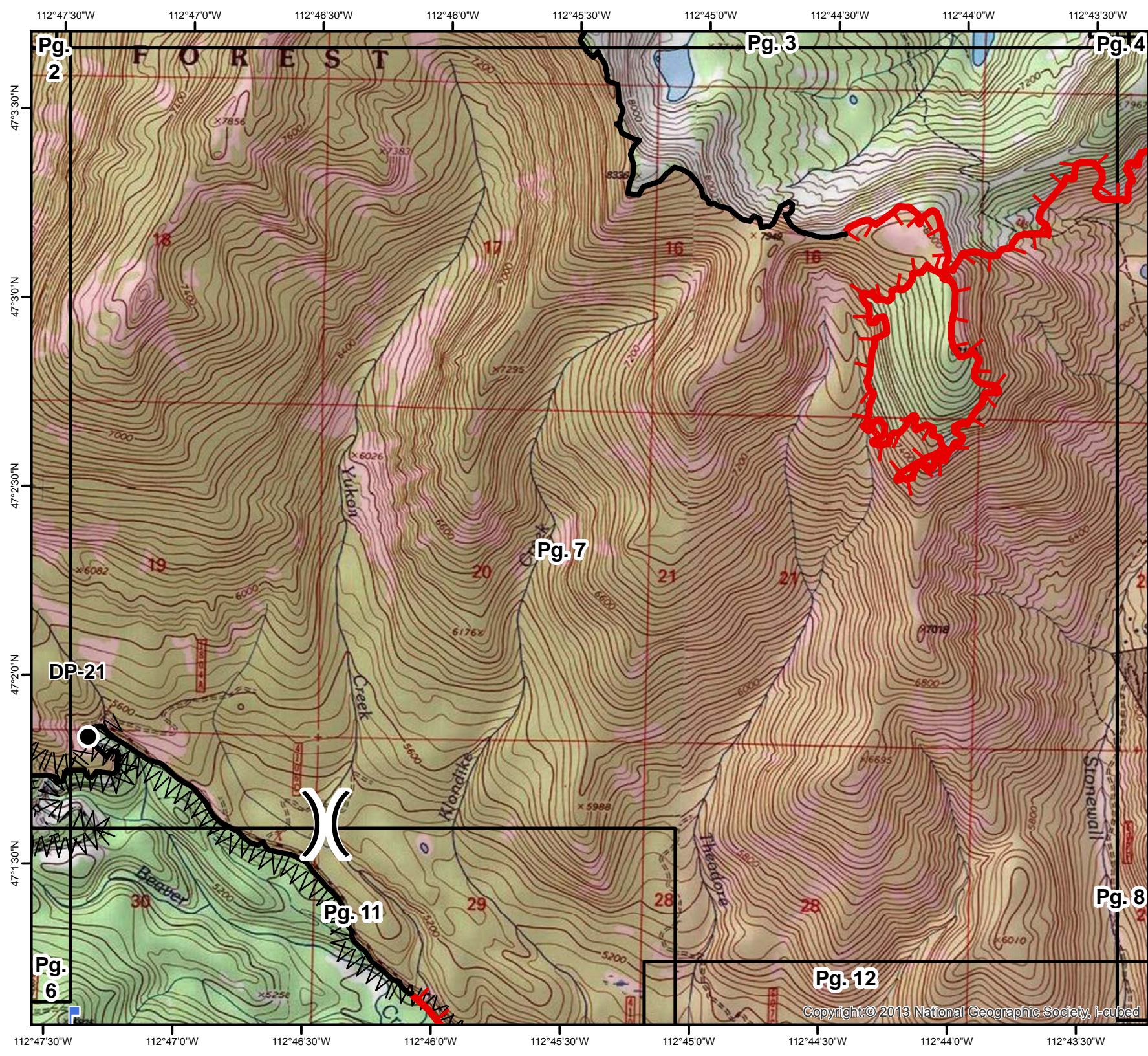
47°33'0"N  
47°30'0"N  
47°27'0"N  
47°24'0"N  
47°21'0"N  
47°18'0"N  
47°15'0"N

47°33'0"N  
47°30'0"N  
47°27'0"N  
47°24'0"N  
47°21'0"N  
47°18'0"N  
47°15'0"N

112°51'30"W 112°51'0"W 112°50'30"W 112°50'0"W 112°49'30"W 112°49'0"W 112°48'30"W 112°48'0"W 112°47'30"W

Copyright © 2013 National Geographic Society, Inc.

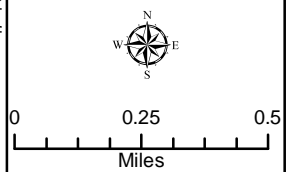




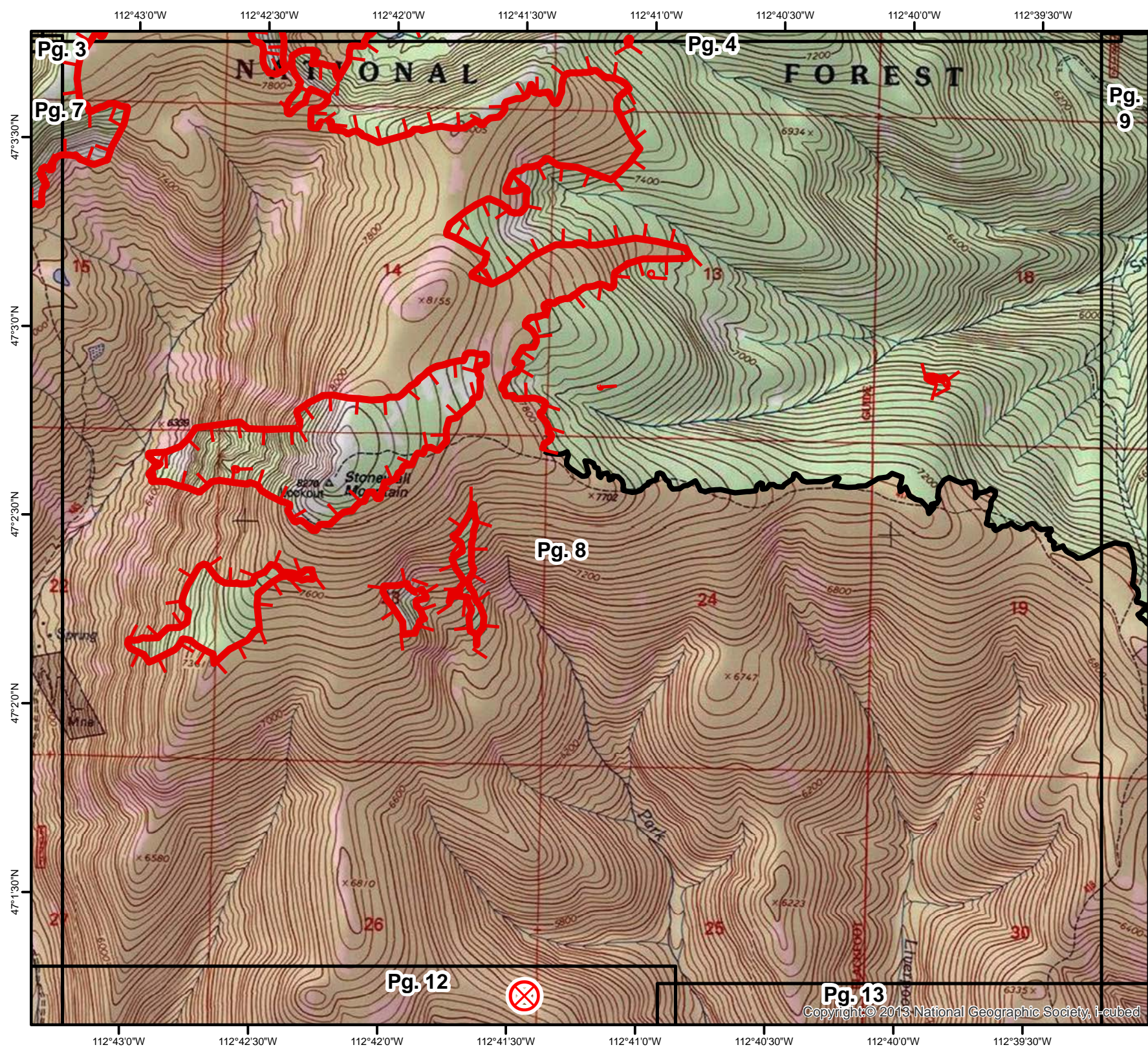
**Park Creek Fire**  
 MT-HLF-000146  
 Sept. 6, 2017  
 Day Shift  
 Approx. 16,402 ac  
 as of 9/5/2017  
 at 22:38 hrs.  
**Sheet 7 of 13**

**Legend**

- Uncontrolled Fire Edge
- Completed Dozer Line
- Hand Line
- Road as Completed Line
- Completed Fuel Break
- Camp
- Drop Point
- Fire Origin
- Helispot
- Lookout
- Division
- Safety Zone
- Water Source



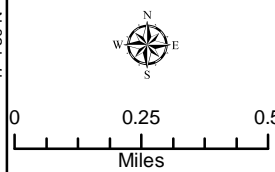




**Park Creek Fire**  
 MT-HLF-000146  
 Sept. 6, 2017  
 Day Shift  
 Approx. 16,402 ac  
 as of 9/5/2017  
 at 22:38 hrs.  
**Sheet 8 of 13**

**Legend**

- Uncontrolled Fire Edge
- Completed Dozer Line
- H - Hand Line
- R - Road as Completed Line
- Completed Fuel Break
- Camp
- Drop Point
- Fire Origin
- Helispot
- Lookout
- Division
- Safety Zone
- Water Source



Coordinate System: WGS 1984 Web Mercator Auxiliary Sphere  
 Projection: UTM 12N  
 Datum: NAD 83

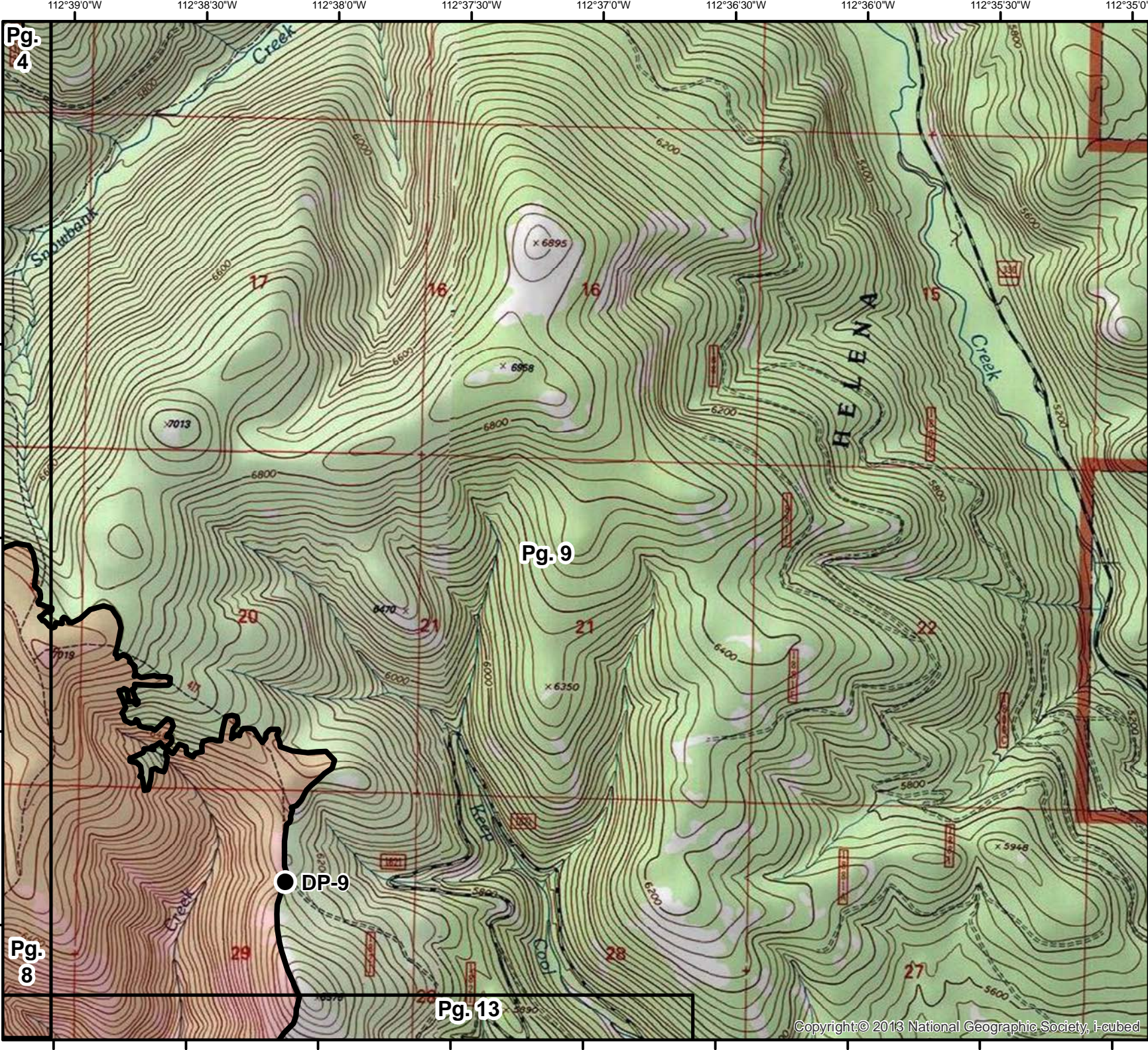


Pg. 4

Pg. 8

Pg. 13

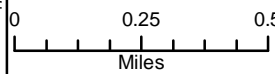
Pg. 9



**Park Creek Fire**  
 MT-HLF-000146  
 Sept. 6, 2017  
 Day Shift  
 Approx. 16,402 ac  
 as of 9/5/2017  
 at 22:38 hrs.  
**Sheet 9 of 13**

**Legend**

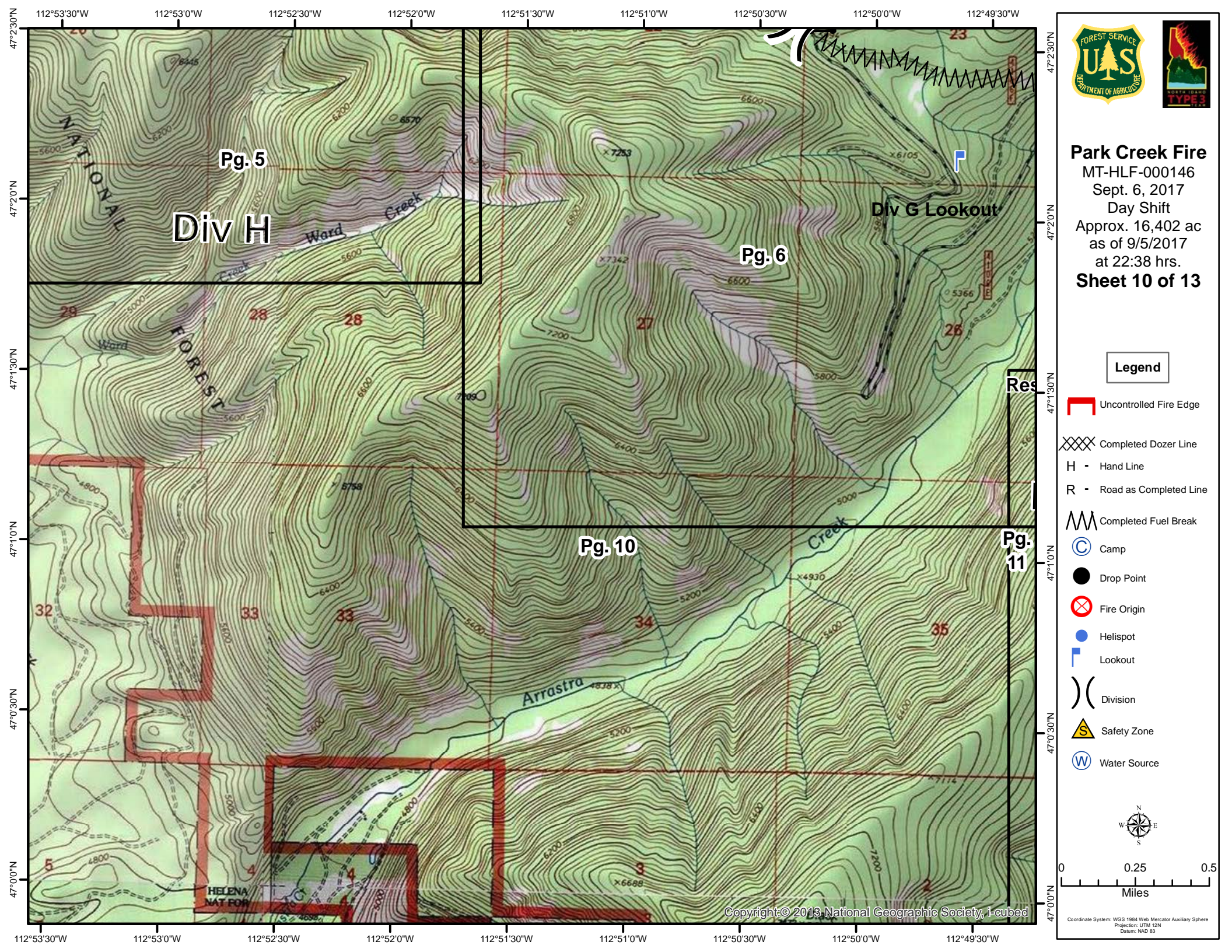
- Uncontrolled Fire Edge
- Completed Dozer Line
- H - Hand Line
- R - Road as Completed Line
- Completed Fuel Break
- Camp
- Drop Point
- Fire Origin
- Helispot
- Lookout
- Division
- Safety Zone
- Water Source



Copyright © 2013 National Geographic Society, i-cubed

Coordinate System: WGS 1984 Web Mercator Auxiliary Sphere  
 Projection: UTM T2N  
 Datum: NAD 83

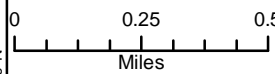




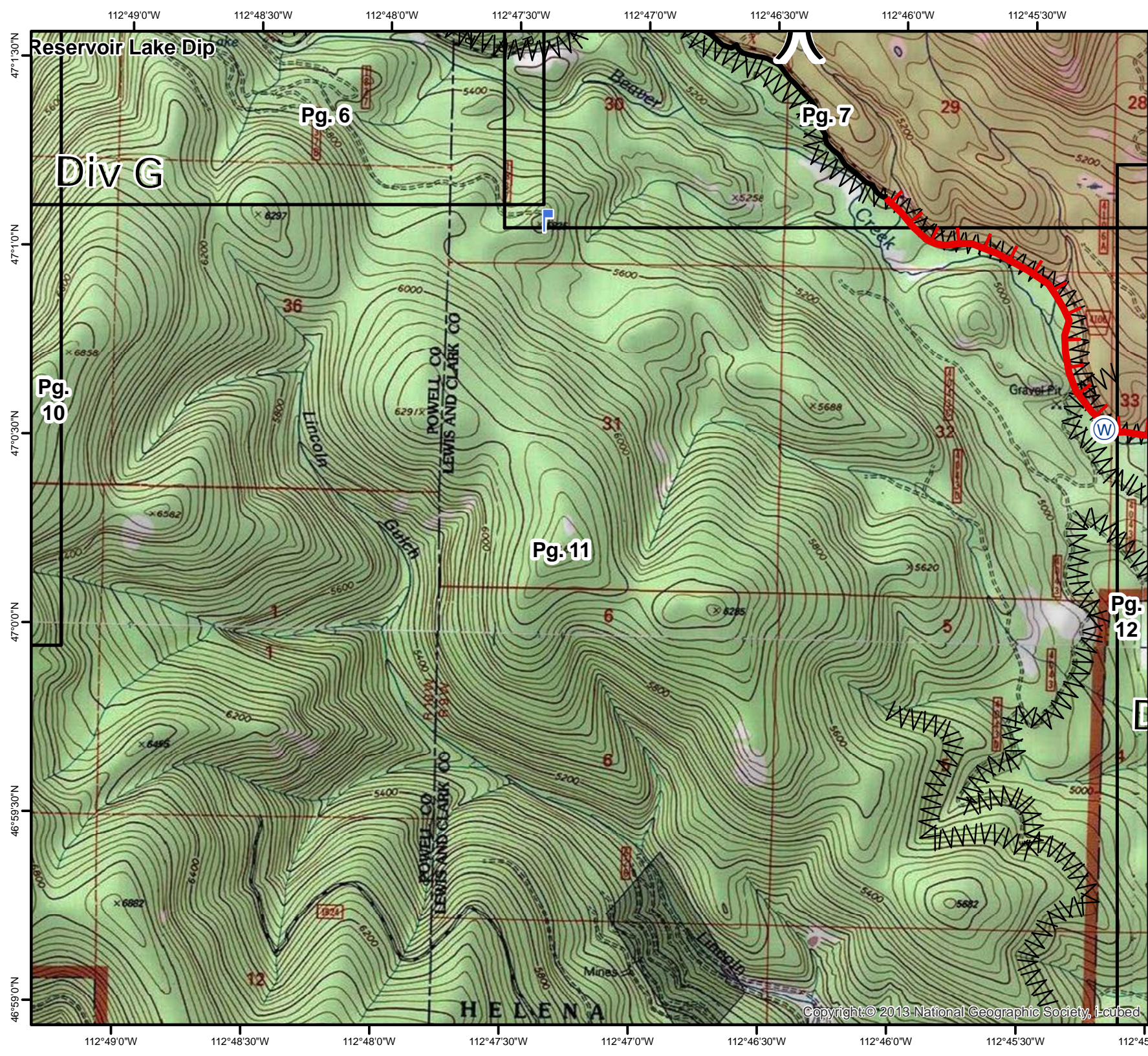
**Park Creek Fire**  
 MT-HLF-000146  
 Sept. 6, 2017  
 Day Shift  
 Approx. 16,402 ac  
 as of 9/5/2017  
 at 22:38 hrs.  
**Sheet 10 of 13**

**Legend**

- Uncontrolled Fire Edge
- Completed Dozer Line
- H - Hand Line
- R - Road as Completed Line
- Completed Fuel Break
- Camp
- Drop Point
- Fire Origin
- Helispot
- Lookout
- Division
- Safety Zone
- Water Source



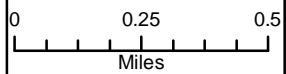




**Park Creek Fire**  
 MT-HLF-000146  
 Sept. 6, 2017  
 Day Shift  
 Approx. 16,402 ac  
 as of 9/5/2017  
 at 22:38 hrs.  
**Sheet 11 of 13**

**Legend**

- Uncontrolled Fire Edge
- Completed Dozer Line
- Hand Line
- Road as Completed Line
- Completed Fuel Break
- Camp
- Drop Point
- Fire Origin
- Helispot
- Lookout
- Division
- Safety Zone
- Water Source



Coordinate System: WGS 1984 Web Mercator Auxiliary Sphere  
 Projection: UTM 12N  
 Datum: NAD 83

Copyright © 2013 National Geographic Society, i-cubed

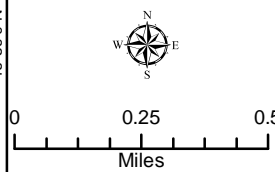




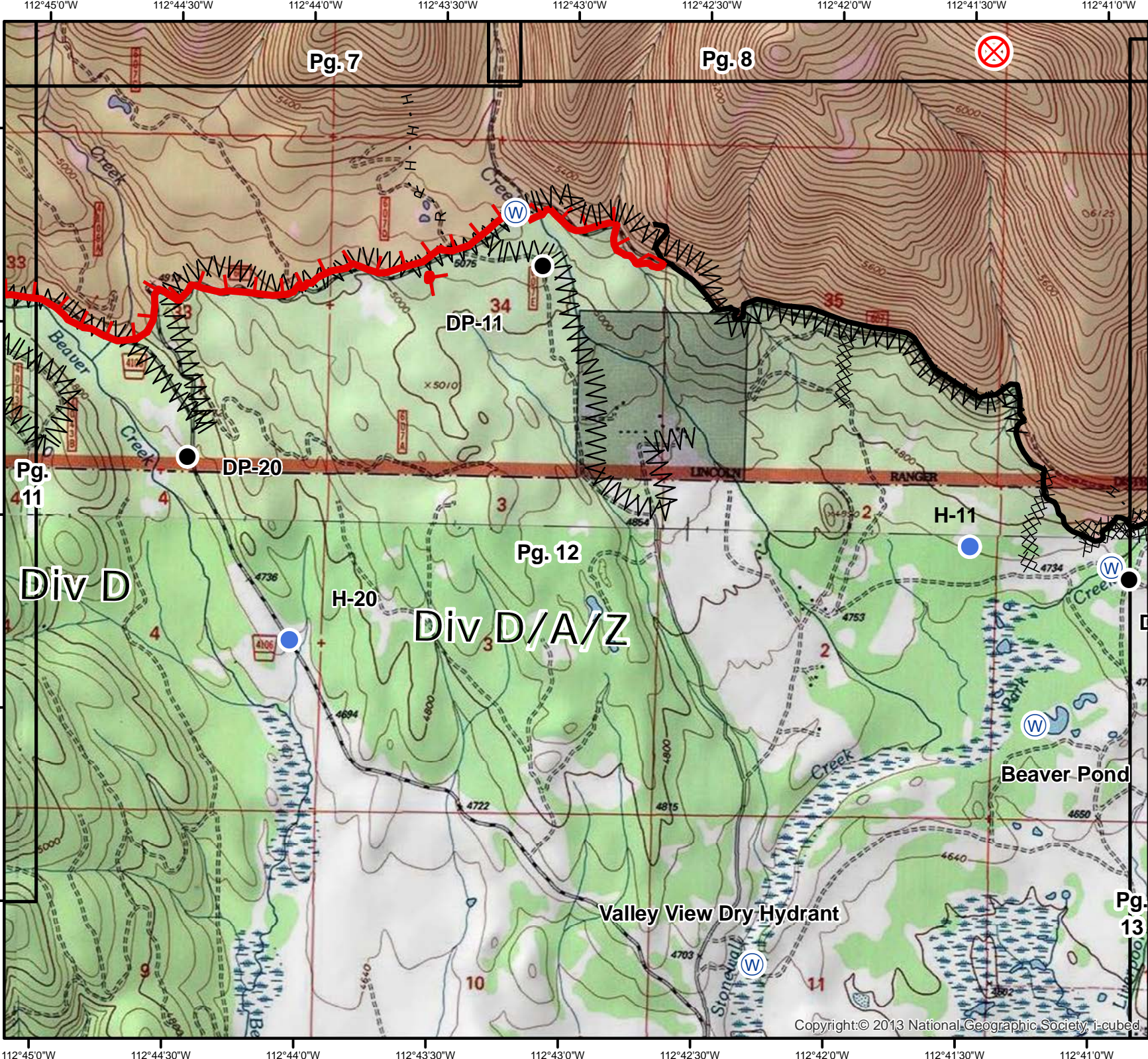
**Park Creek Fire**  
 MT-HLF-000146  
 Sept. 6, 2017  
 Day Shift  
 Approx. 16,402 ac  
 as of 9/5/2017  
 at 22:38 hrs.  
**Sheet 12 of 13**

**Legend**

- Uncontrolled Fire Edge
- Completed Dozer Line
- Hand Line
- Road as Completed Line
- Completed Fuel Break
- Camp
- Drop Point
- Fire Origin
- Helispot
- Lookout
- Division
- Safety Zone
- Water Source



Coordinate System: WGS 1984 Web Mercator Auxiliary Sphere  
 Projection: UTM T2N  
 Datum: NAD 83



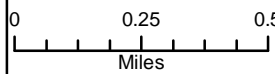




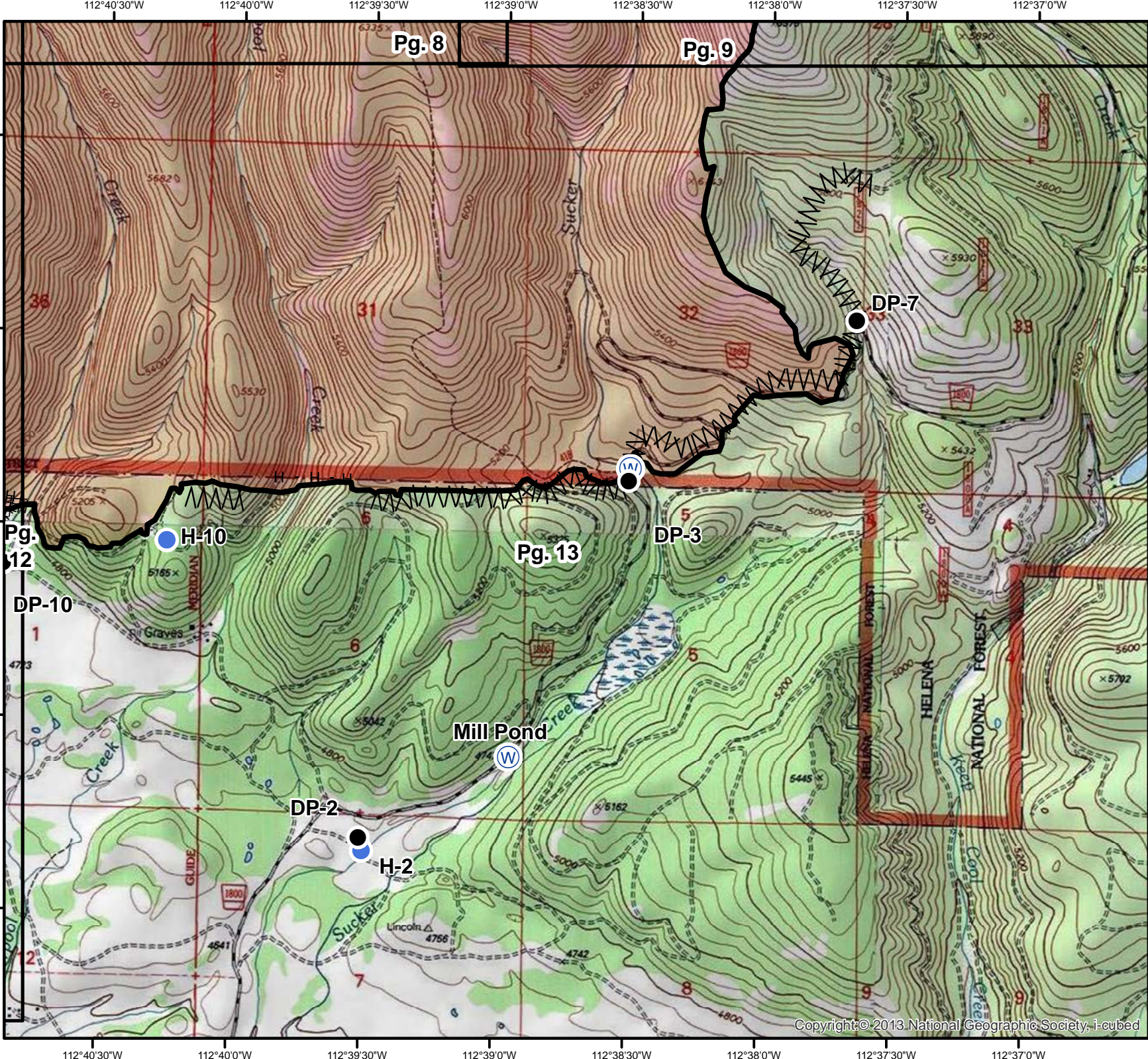
**Park Creek Fire**  
 MT-HLF-000146  
 Sept. 6, 2017  
 Day Shift  
 Approx. 16,402 ac  
 as of 9/5/2017  
 at 22:38 hrs.  
**Sheet 13 of 13**

**Legend**

- Uncontrolled Fire Edge
- Completed Dozer Line
- Hand Line
- Road as Completed Line
- Completed Fuel Break
- Camp
- Drop Point
- Fire Origin
- Helispot
- Lookout
- Division
- Safety Zone
- Water Source



Coordinate System: WGS 1984 Web Mercator Auxiliary Sphere  
 Projection: UTM T2N  
 Datum: NAD 83



Copyright © 2013 National Geographic Society, i-cubed