

MAP 31
Condition: The Park Creek Fire has crossed the southeast/northwest line roughly 1 mile to the north of the private property values approximately 1 mile up the Arrastra Creek drainage to the north and is likely to continue moving to the south onto private property.
Location: The MAP is roughly a southeast to northwest line 1 mile from the nearest private property.
Intent: Initiate evacuation order for residences on private lands.

MAP 32 (Rice Ridge MAP 15)
Condition: Fire has crossed the MAP line and is established and likely to make it to the campground.
Location: MAP line starting at the ridgeline West of Copper Creek in section 7, moving East towards Snowbank Creek, South to the ridge top in section 16.
Intent: The Copper Creek Campground is a popular Forest Service Campground used throughout the summer and fall. The campground is one of the few areas in the upper Copper Creek drainage that has a stand of green trees. This MAP is intended to provide adequate time for resources to set up a sprinkler system in the campground to reduce fire behavior as fire passes through/by the campground with the intent of keeping the impacts to live trees to a minimum.

MAP 33 (RICE RIDGE MAP 16)
Condition: Fire is anticipated to cross the MAP within 24 hours and there is a high probability of the fire advancing into the Highway 200 corridor.
Location: This MAP is located north of Ovando, MT above the toe of the slopes where the mountainous terrain transitions to the valley floor. It starts in Shanley Creek and contours east to Dry Creek.
Intent: Public safety. Notification of fire spread to cooperators stakeholders, partners and public in a manner that allows for orderly evacuation if necessary.

MAP 8
Condition: Fire has progressed to Keep Cool Lakes and is likely to continue aggressive southeasterly growth towards values located along Hwy 200.
Location: Starting at the west end of Keep Cool Lakes, the line heads northeast up the ridge following the ridgelines to its terminus on the Copper Creek Road in the southeast corner of section 23.
Intent: This MAP is to ensure that measures are being taken prior to fire reaching the evacuation stage and notification of the residents living in the in the subdivision at the confluence of Copper Creek and Landers Fork, and to notify residents at the Elk Trail Landing Strip that if the fire continues to the east their access may be cutoff.

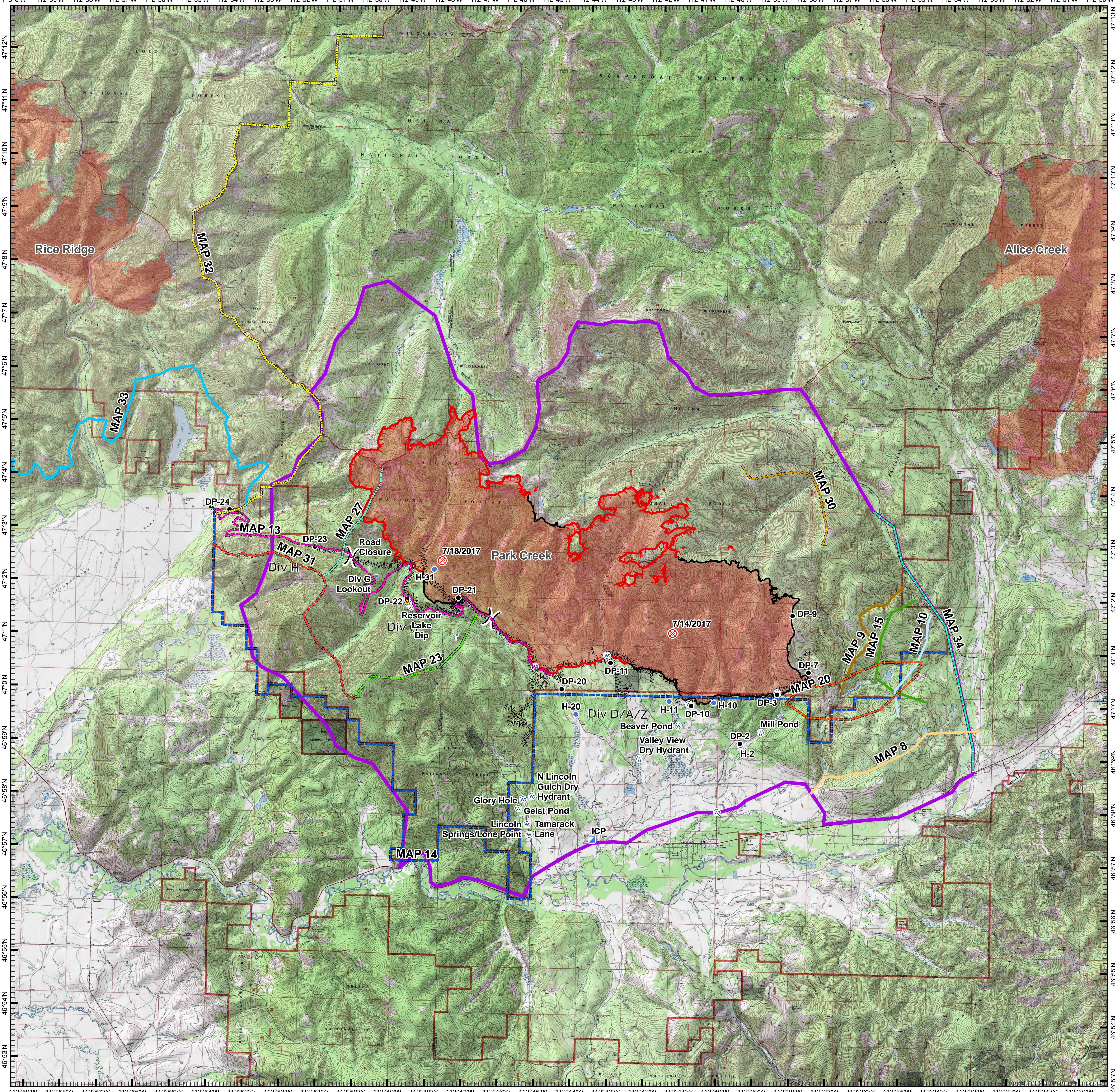
MAP 9
Condition: Fire has progressed to Keep Cool Lakes and is likely to continue aggressive southeasterly growth towards values located along Hwy 200.
Location: Starting at the west end of Keep Cool Lakes, the line heads northeast up the ridge following the ridgelines to its terminus on the Copper Creek Road in the southeast corner of section 23.
Intent: This MAP is to ensure that measures are being taken prior to fire reaching the evacuation stage and notification of the residents living in the in the subdivision at the confluence of Copper Creek and Landers Fork, and to notify residents at the Elk Trail Landing Strip that if the fire continues to the east their access may be cutoff.

MAP 10
Condition: Fire has crossed the MAP line and direct fire suppression efforts are ineffective, and fire progression is likely to continue towards the structures and residences in the Davis/Martin area.
Location: The MAP line starts on the west at Keep Cool Creek in the southwest corner of Section 9. The line then follows an unnamed drainage eastward continuing to follow riparian areas to Section 2 the heads east to its terminus at the Copper Creek Road.
Intent: Provide for protection of persons and property located north of Hwy 200 between the east end of Lincoln Airport and the Copper Creek Road.

MAP 13
Condition: Fire has crossed the MAP line and fire progression is likely to continue towards private property and residences in the Lincoln Springs Subdivision.
Location: The MAP line starts on the top of Black Mountain moving southeast following the ridgelines east of the county line and end near division D/G break to the corner line of the forest boundary.
Intent: Initiate evacuation order for residences in the Lincoln Springs Subdivision. Provide for protection of life and property in the Lincoln Springs Subdivision. Have Incident Commander and Line Officer consider re-evaluation of incident complexity analysis.

MAP 14
Condition: Fire has left National Forest lands and has crossed onto Montana DNRC or private lands.
Location: Forest Service Boundary within the Fire Planning Area.
Intent: Initiate evacuations north of Highway 200 and discuss re-evaluation of incident complexity analysis

MAP 20
Condition: Fire is likely to enter the MAP area.
Location: This MAP is a ring buffering the Keep Cool Lakes by approximately 1 mile.
Intent: The "Road to the Buffalo" is a historic aboriginal travel route to the buffalo grounds on the east side of the continental divide. The Keep Cool Lakes area is in this travel corridor. This MAP is designed to ensure that communications are occurring between the operations sections and the heritage resources to ensure that suppression operations do not damage cultural resources that may be in the area



MAP 34
Condition: The Alice Creek Fire has reached Park Creek Fire Planning Area from the east to the west and fire movement is likely to Lincoln proper.
Location: The MAP follows the Park Creek Fire Planning Area line, starting from just south of Copper Creek Campground, following the Copper Creek drainage to Landers Creek drainage, heading south to Highway 200.
Intent: Initiate pre-evacuation warning for Lincoln proper.

MAP 20
Condition: Fire is likely to enter the MAP area.
Location: This MAP is a ring buffering the Keep Cool Lakes by approximately 1 mile.
Intent: The "Road to the Buffalo" is a historic aboriginal travel route to the buffalo grounds on the east side of the continental divide. The Keep Cool Lakes area is in this travel corridor. This MAP is designed to ensure that communications are occurring between the operations sections and the heritage resources to ensure that suppression operations do not damage cultural resources that may be in the area

MAP 8
Condition: Fire has crossed the MAP line and direct fire suppression efforts are ineffective, and fire progression is likely to continue towards the structures and residences in the Davis/Martin area.
Location: The MAP line starts on the west at Keep Cool Creek in the southwest corner of Section 9. The line then follows an unnamed drainage eastward continuing to follow riparian areas to Section 2 the heads east to its terminus at the Copper Creek Road.
Intent: Provide for protection of persons and property located north of Hwy 200 between the east end of Lincoln Airport and the Copper Creek Road.

MAP 9
Condition: Fire has progressed to Keep Cool Lakes and is likely to continue aggressive southeasterly growth towards values located along Hwy 200.
Location: Starting at the west end of Keep Cool Lakes, the line heads northeast up the ridge following the ridgelines to its terminus on the Copper Creek Road in the southeast corner of section 23.
Intent: This MAP is to ensure that measures are being taken prior to fire reaching the evacuation stage and notification of the residents living in the in the subdivision at the confluence of Copper Creek and Landers Fork, and to notify residents at the Elk Trail Landing Strip that if the fire continues to the east their access may be cutoff.

MAP 10
Condition: Fire has crossed the MAP line and direct fire suppression efforts are ineffective, and fire progression is likely to continue towards the structures and residences in the Lincoln Creek area.
Location: The MAP line starts at a high point approximately 1 mile south of the eastern Keep Cool Lake, heads north and east following high points to its terminus on the Copper Creek Road in the northeast corner of Section 26.
Intent: Provide for protection of persons and property located at the confluence of Copper Creek and Landers Fork, and to notify residents in Lander Fork at Elk Trail Landing Strip that their access may be cutoff.

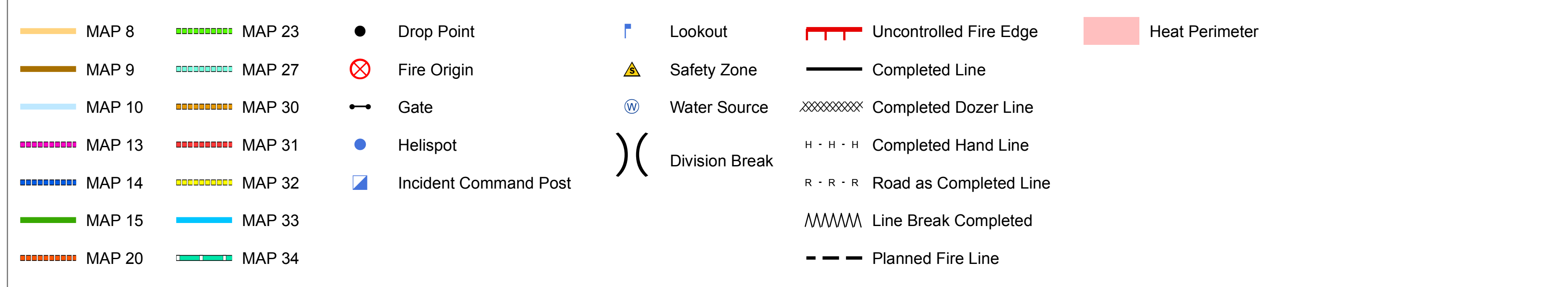
MAP 13
Condition: Park Creek Fire has crossed the FDR 4106 and suppression operations are not likely to be successful in containing fire movement towards Old Lincoln Cemetery, Montana State and private lands (Lincoln Springs Subdivision).
Location: FDR 4106 is the line location for this MAP. The west end of the MAP line starts at DP-24 and terminates at DP-20.
Intent: If the Park Creek Fire gets established south of MAP 13, initiate pre-evacuation order and have Incident Commander and Line Officer discuss re-evaluation of incident complexity analysis.

MAP 14
Condition: Fire has left National Forest lands and has crossed onto Montana DNRC or private lands.
Location: Forest Service Boundary within the Fire Planning Area.
Intent: Initiate evacuations north of Highway 200 and discuss re-evaluation of incident complexity analysis

MAP 20
Condition: Fire is likely to enter the MAP area.
Location: This MAP is a ring buffering the Keep Cool Lakes by approximately 1 mile.
Intent: The "Road to the Buffalo" is a historic aboriginal travel route to the buffalo grounds on the east side of the continental divide. The Keep Cool Lakes area is in this travel corridor. This MAP is designed to ensure that communications are occurring between the operations sections and the heritage resources to ensure that suppression operations do not damage cultural resources that may be in the area

MAP 30
Condition: Fire has crossed the MAP line and is established and likely to make it to the campground.
Location: MAP line starting at the ridgeline West of Cooper Creek in section 7, moving East towards Snowbank Creek, South to the ridge top in section 16.
Intent: The Copper Creek Campground is a popular Forest Service Campground used throughout the summer and fall. The campground is one of the few areas in the upper Copper Creek drainage that has a stand of green trees This MAP is intended to provide adequate time for resources to set up a sprinkler system in the campground to reduce fire behavior as fire passes through/by the campground with the intent of keeping the impacts to live trees to a minimum.

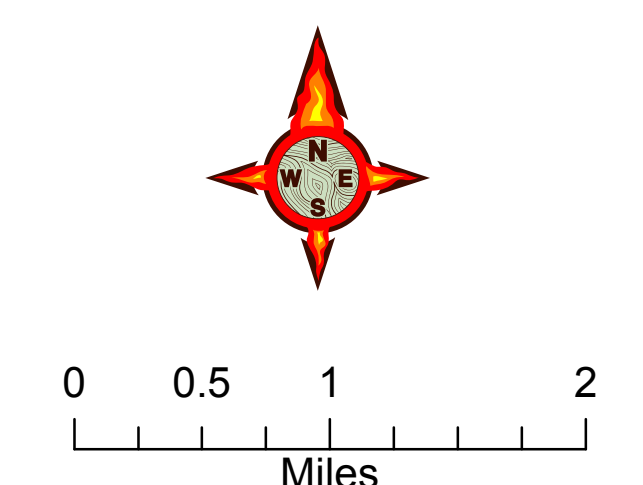
M.A.P. MAP
 Park Creek Fire
 September 13, 2017



MANAGEMENT ACTION POINTS Map

Park Creek Incident

September 13, 2017



M.A.P. MAP
 Park Creek Fire
 September 13, 2017