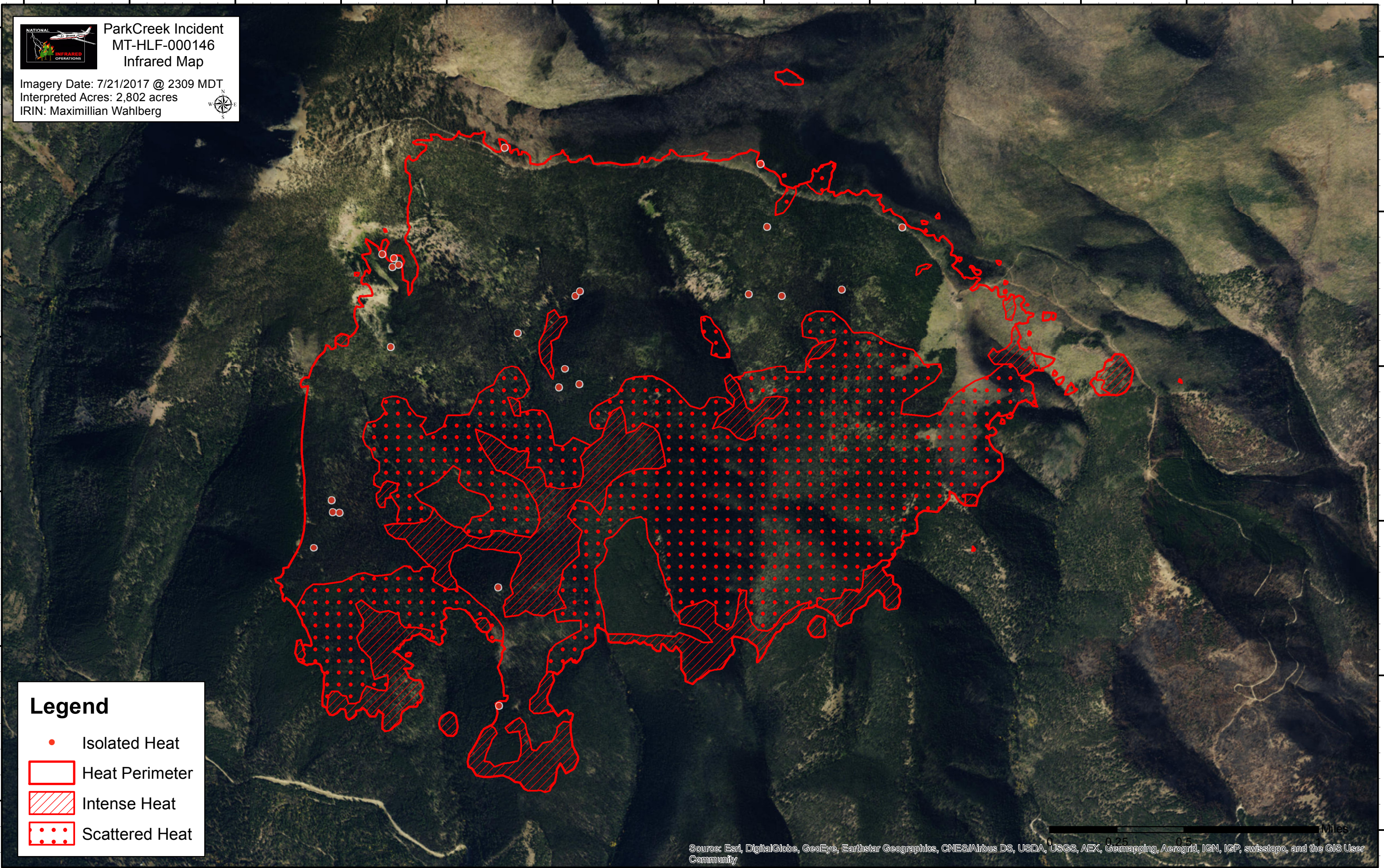




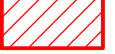

112°43'30"W 112°43'0"W 112°42'30"W 112°42'0"W 112°41'30"W 112°41'0"W 112°40'30"W 112°40'0"W 112°39'30"W 112°39'0"W 112°38'30"W 112°38'0"W 112°37'30"W



 **ParkCreek Incident**
MT-HLF-000146
Infrared Map
Imagery Date: 7/21/2017 @ 2309 MDT
Interpreted Acres: 2,802 acres
IRIN: Maximilian Wahlberg



Legend

-  Isolated Heat
-  Heat Perimeter
-  Intense Heat
-  Scattered Heat

0 0.25 0.5 1 Miles

Source: Esri, DigitalGlobe, GeoEye, Earthstar Geographics, CNES/Airbus DS, USDA, USGS, AEX, Geomapping, Aerogrid, IGN, IGP, swisstopo, and the GIS User Community

112°43'30"W 112°43'0"W 112°42'30"W 112°42'0"W 112°41'30"W 112°41'0"W 112°40'30"W 112°40'0"W 112°39'30"W 112°39'0"W 112°38'30"W 112°38'0"W 112°37'30"W

47°30'N
47°23'0"N
47°20'0"N
47°13'0"N
47°10'0"N
47°03'0"N

47°30'N
47°23'0"N
47°20'0"N
47°13'0"N
47°10'0"N
47°03'0"N