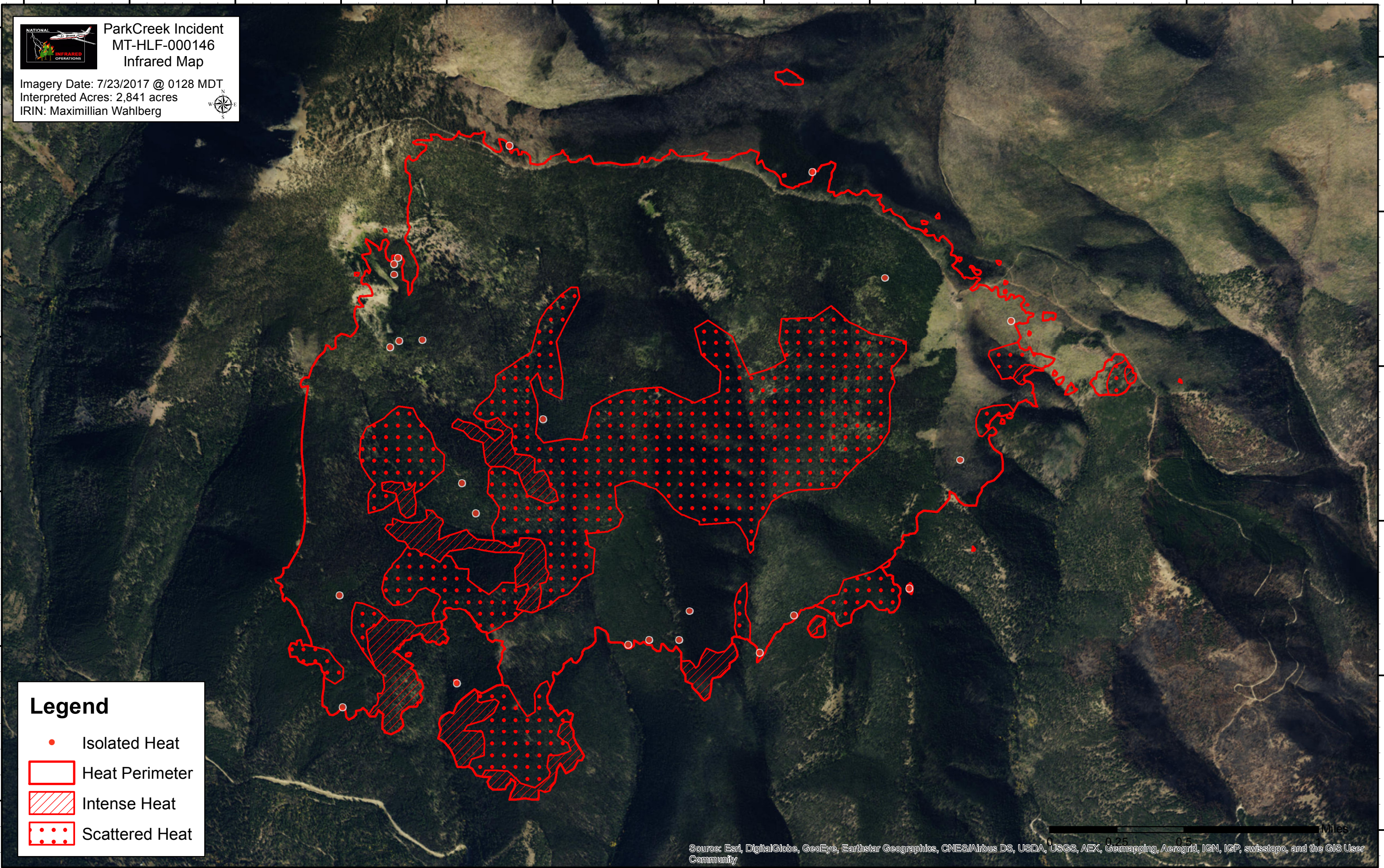


112°43'30"W 112°43'0"W 112°42'30"W 112°42'0"W 112°41'30"W 112°41'0"W 112°40'30"W 112°40'0"W 112°39'30"W 112°39'0"W 112°38'30"W 112°38'0"W 112°37'30"W



**NATIONAL INFRARED OPERATIONS**  
**ParkCreek Incident**  
**MT-HLF-000146**  
**Infrared Map**  
Imagery Date: 7/23/2017 @ 0128 MDT  
Interpreted Acres: 2,841 acres  
IRIN: Maximillian Wahlberg



**Legend**  
● Isolated Heat  
□ Heat Perimeter  
▨ Intense Heat  
●●● Scattered Heat

0 0.25 0.5 1 Miles

Source: Esri, DigitalGlobe, GeoEye, Earthstar Geographics, CNES/Airbus DS, USDA, USGS, AEX, Geomapping, Aerogrid, IGN, IGP, swisstopo, and the GIS User Community

112°43'30"W 112°43'0"W 112°42'30"W 112°42'0"W 112°41'30"W 112°41'0"W 112°40'30"W 112°40'0"W 112°39'30"W 112°39'0"W 112°38'30"W 112°38'0"W 112°37'30"W

47°30'N  
47°23'0"N  
47°20'0"N  
47°13'0"N  
47°10'0"N  
47°03'0"N

47°30'N  
47°23'0"N  
47°20'0"N  
47°13'0"N  
47°10'0"N  
47°03'0"N