

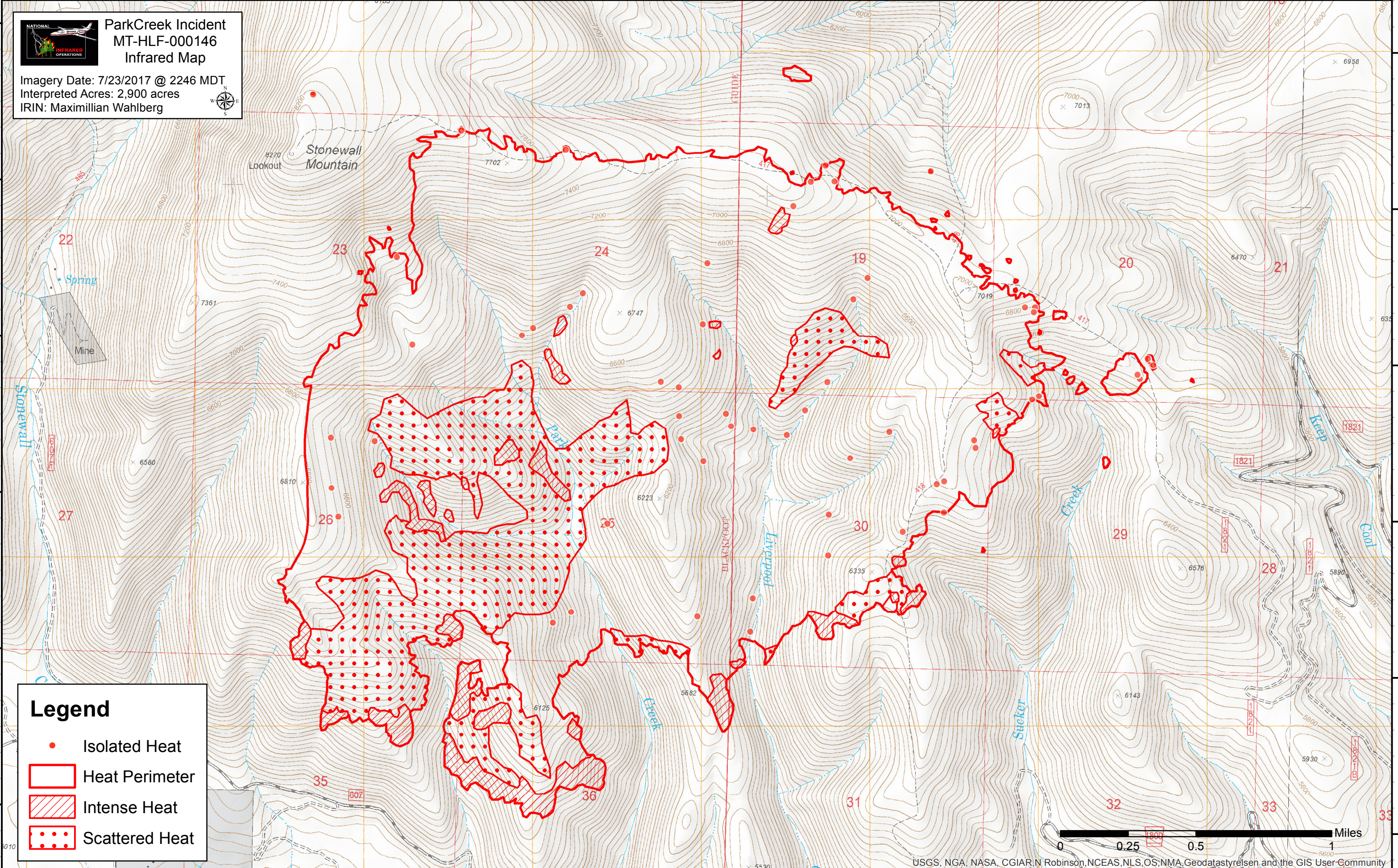


112°43'30"W 112°43'0"W 112°42'30"W 112°42'0"W 112°41'30"W 112°41'0"W 112°40'30"W 112°40'0"W 112°39'30"W 112°39'0"W 112°38'30"W 112°38'0"W 112°37'30"W

47°30'N 47°23'0"N 47°20'N 47°13'0"N 47°10'N 47°03'0"N

**ParkCreek Incident**  
**MT-HLF-000146**  
**Infrared Map**

Imagery Date: 7/23/2017 @ 2246 MDT  
 Interpreted Acres: 2,900 acres  
 IRIN: Maximilian Wahlberg

**Legend**

- Isolated Heat
- Heat Perimeter
- Intense Heat
- Scattered Heat



USGS, NGA, NASA, CGIAR, N. Robinson, NCEAS, NLS, OS, NMA, Geodatastyrelsen and the GIS User Community

112°43'30"W 112°43'0"W 112°42'30"W 112°42'0"W 112°41'30"W 112°41'0"W 112°40'30"W 112°40'0"W 112°39'30"W 112°39'0"W 112°38'30"W 112°38'0"W 112°37'30"W