
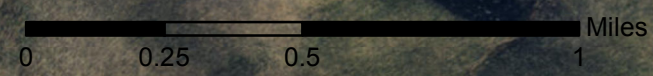


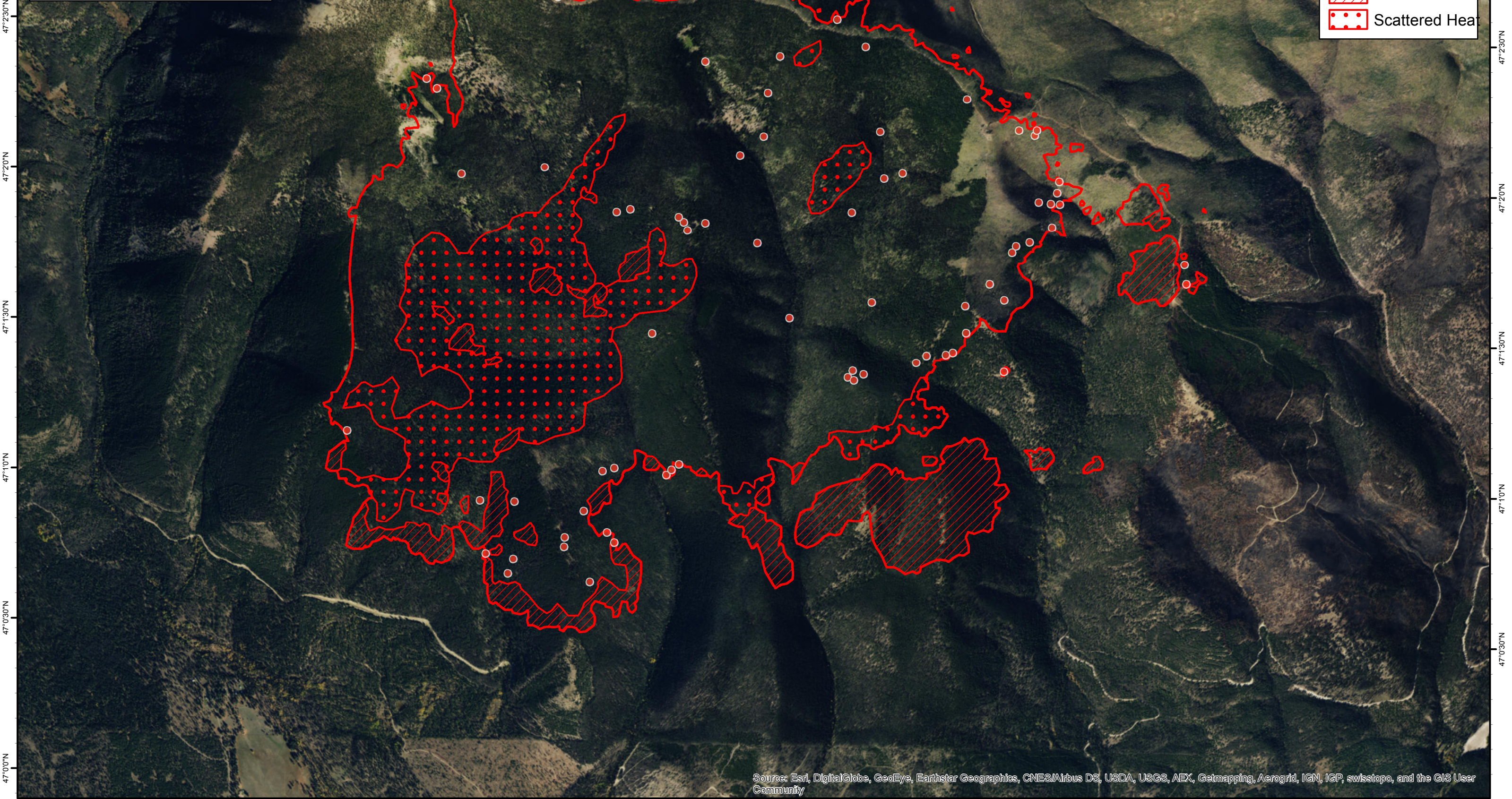
112°43'30"W 112°43'0"W 112°42'30"W 112°42'0"W 112°41'30"W 112°41'0"W 112°40'30"W 112°40'0"W 112°39'30"W 112°39'0"W 112°38'30"W 112°38'0"W 112°37'30"W 112°37'0"W

 **ParkCreek Incident**
MT-HLF-000146
Infrared Map
Imagery Date: 7/24/2017 @ 2213 MDT
Interpreted Acres: 3,183 acres
IRIN: Maximillian Wahlberg



Legend

- Isolated Heat
- Heat Perimeter
- Intense Heat
- Scattered Heat



47°00'N 47°03'0"N 47°10'N 47°13'0"N 47°20'N 47°23'0"N 47°30'N

Source: Esri, DigitalGlobe, GeoEye, Earthstar Geographics, CNES/Airbus DS, USDA, USGS, AEX, Getmapping, Aerogrid, IGN, IGP, swisstopo, and the GIS User Community