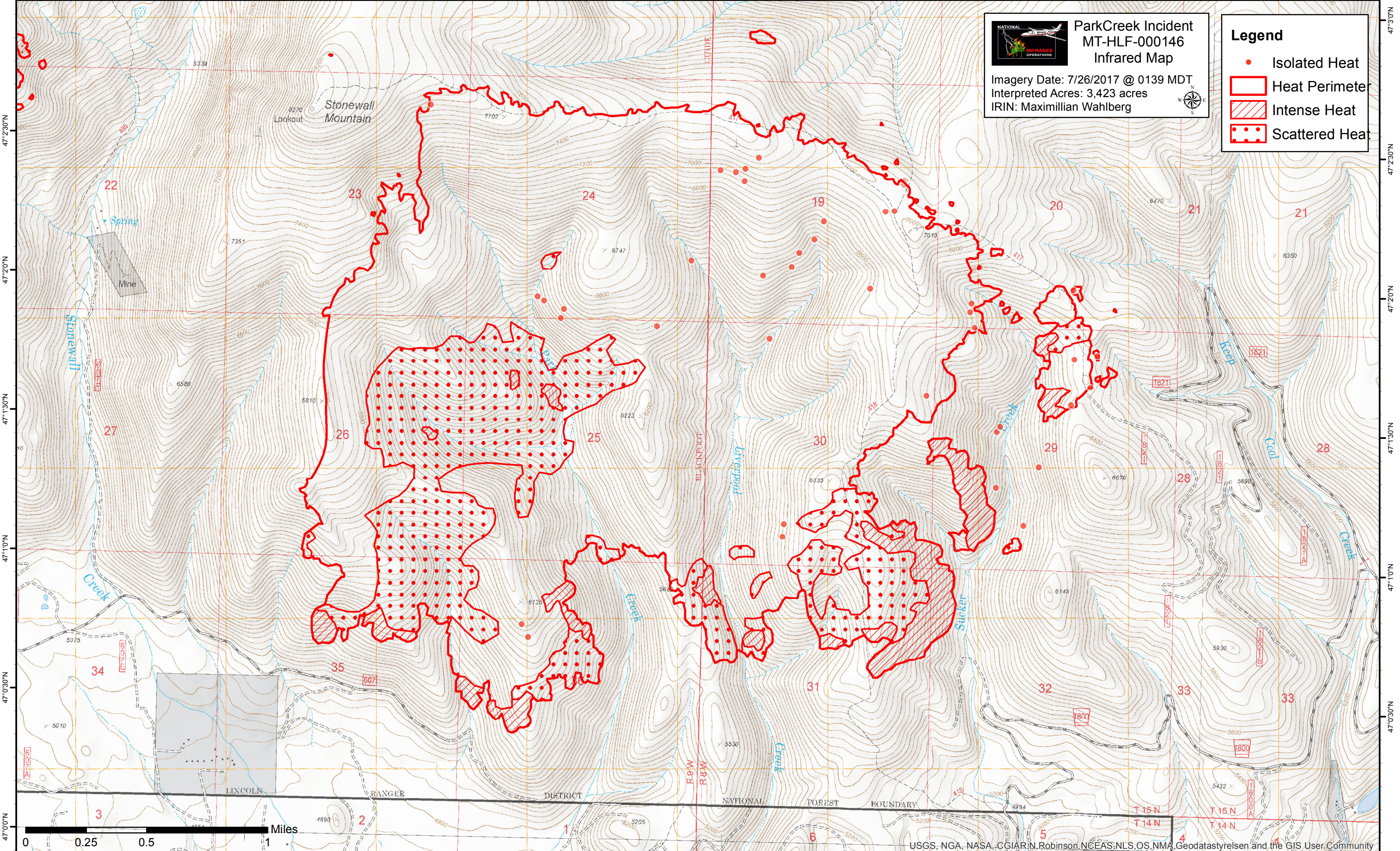


112°43'30"W 112°43'0"W 112°42'30"W 112°42'0"W 112°41'30"W 112°41'0"W 112°40'30"W 112°40'0"W 112°39'30"W 112°39'0"W 112°38'30"W 112°38'0"W 112°37'30"W 112°37'0"W



### ParkCreek Incident MT-HLF-000146 Infrared Map

Imagery Date: 7/26/2017 @ 0139 MDT  
Interpreted Acres: 3,423 acres  
IRIN: Maximilian Wahlberg



**Legend**

- Isolated Heat
- Heat Perimeter
- Intense Heat
- Scattered Heat

USGS, NGA, NASA, CGIAR, N. Robinson, NCEAS, NLS, OS, NMA, Geodatasyreisen and the GIS User Community

47°00'0"N 47°03'0"N 47°10'0"N 47°13'0"N 47°20'0"N 47°23'0"N 47°30'0"N

