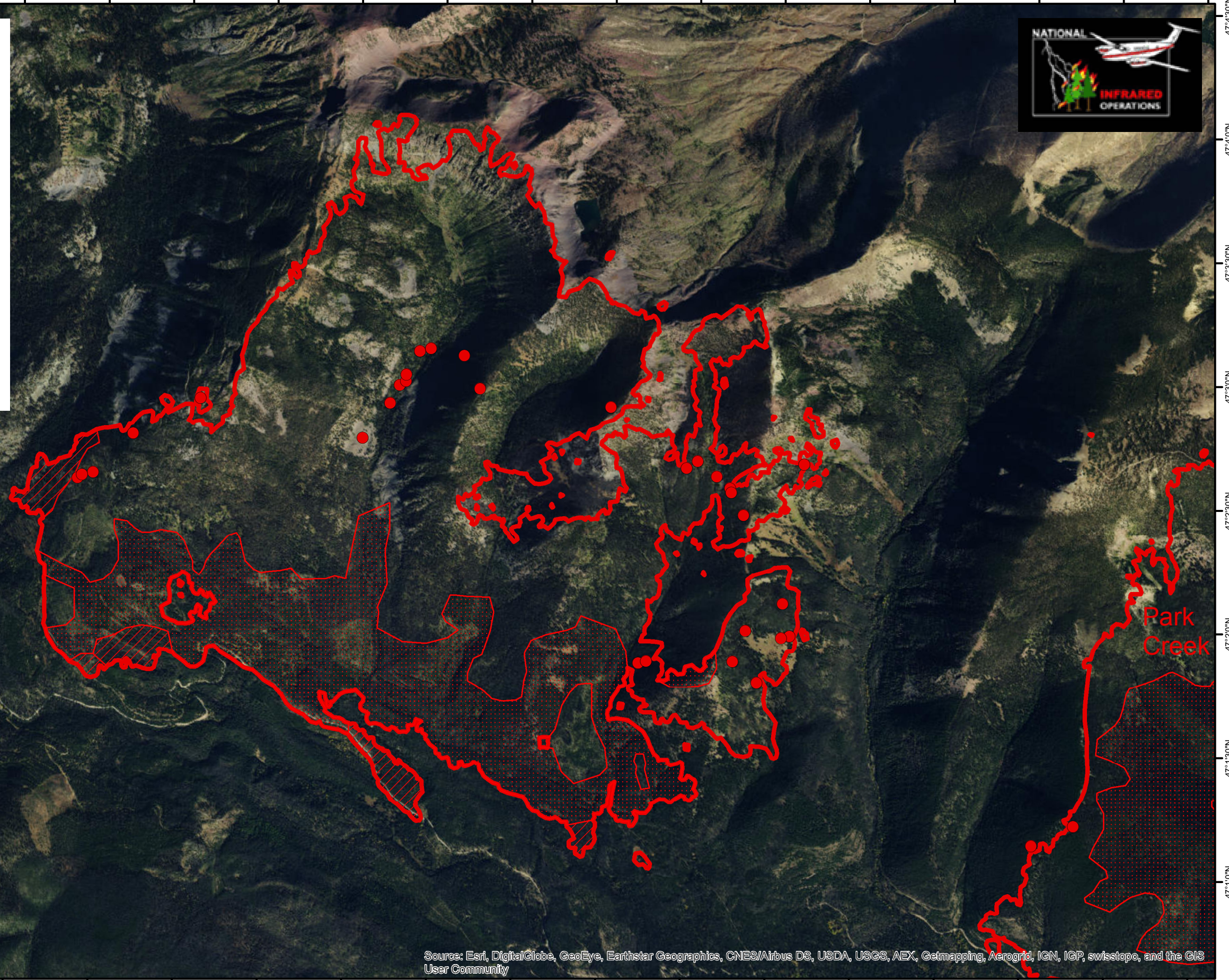
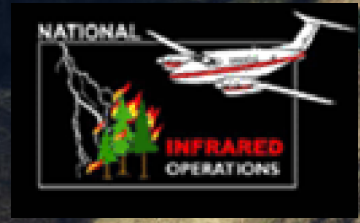
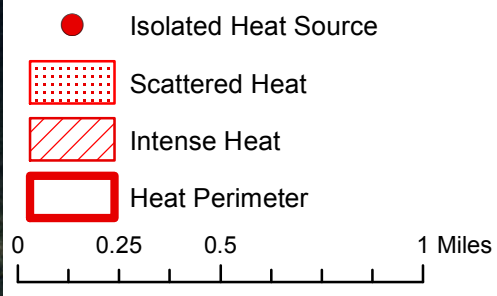


Arrastra Creek MT-HLF-000166 Infrared Heat Sources

Imagery time: 2319 MDT 8/6/2017
Interpreted size: 4009 acres
Infrared Interpreter: Lindsey Kiesz (T)



Source: Esri, DigitalGlobe, GeoEye, Earthstar Geographics, CNES/Airbus DS, USDA, USGS, AEX, Getmapping, Aerogrid, IGN, IGP, swisstopo, and the GIS User Community

112°50'30"W 112°50'0"W 112°49'30"W 112°49'0"W 112°48'30"W 112°48'0"W 112°47'30"W 112°47'0"W 112°46'30"W 112°46'0"W 112°45'30"W 112°45'0"W 112°44'30"W 112°44'0"W 112°43'30"W 112°43'0"W 112°42'30"W 112°42'0"W 112°41'30"W

47°1'0"N 47°1'30"N 47°2'0"N 47°2'30"N 47°3'0"N 47°3'30"N 47°4'0"N 47°4'30"N