

112°48'0"W

112°46'0"W

112°44'0"W

47°40'N

47°40'N

47°20'N

47°20'N

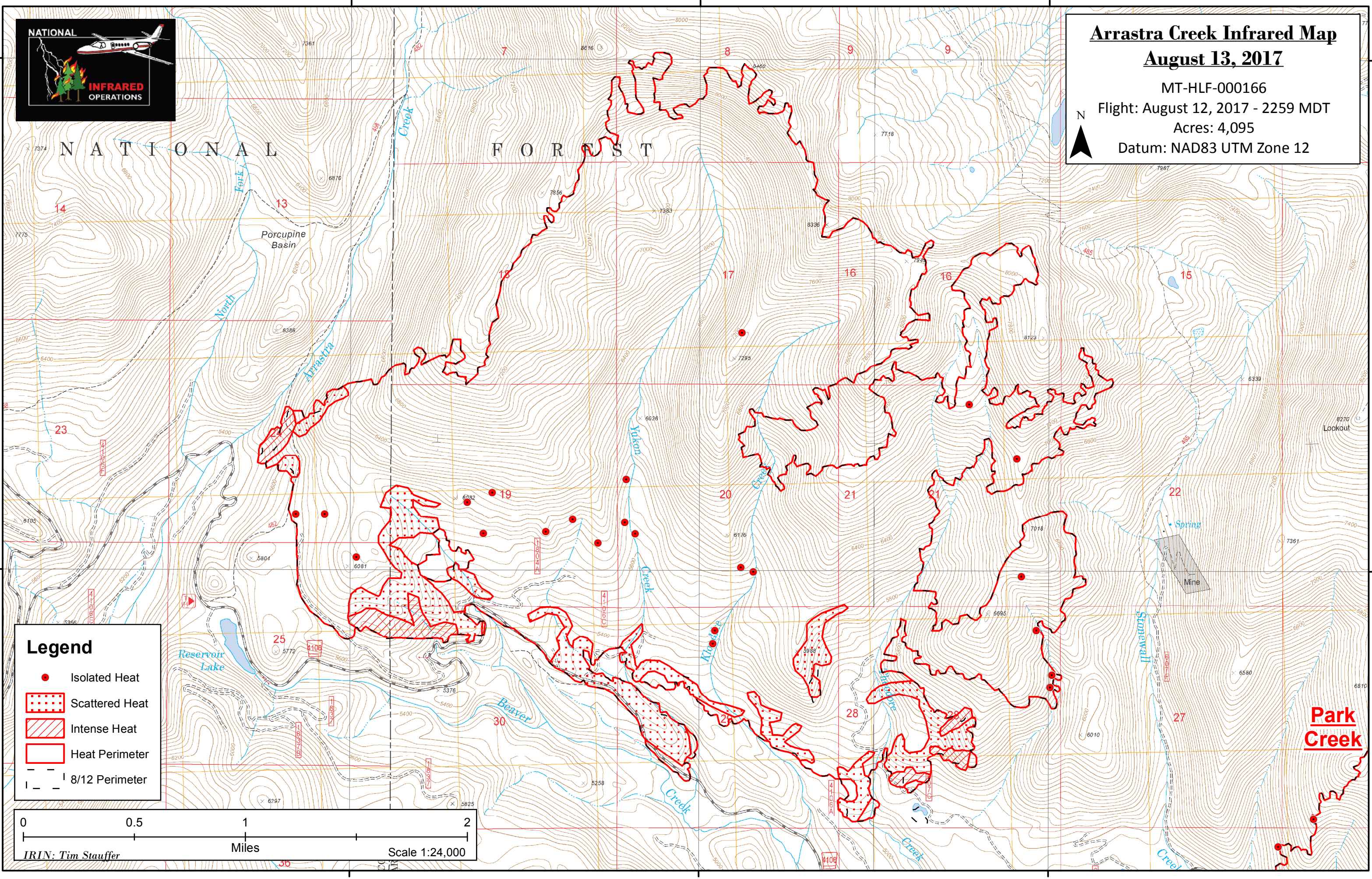
112°48'0"W

112°46'0"W

112°44'0"W



Arrastra Creek Infrared Map
August 13, 2017
 MT-HLF-000166
 Flight: August 12, 2017 - 2259 MDT
 Acres: 4,095
 Datum: NAD83 UTM Zone 12



Legend

- Isolated Heat
- Scattered Heat
- Intense Heat
- Heat Perimeter
- 8/12 Perimeter

0 0.5 1 2
 Miles
 Scale 1:24,000
 IRIN: Tim Stauffer

**Park
Creek**