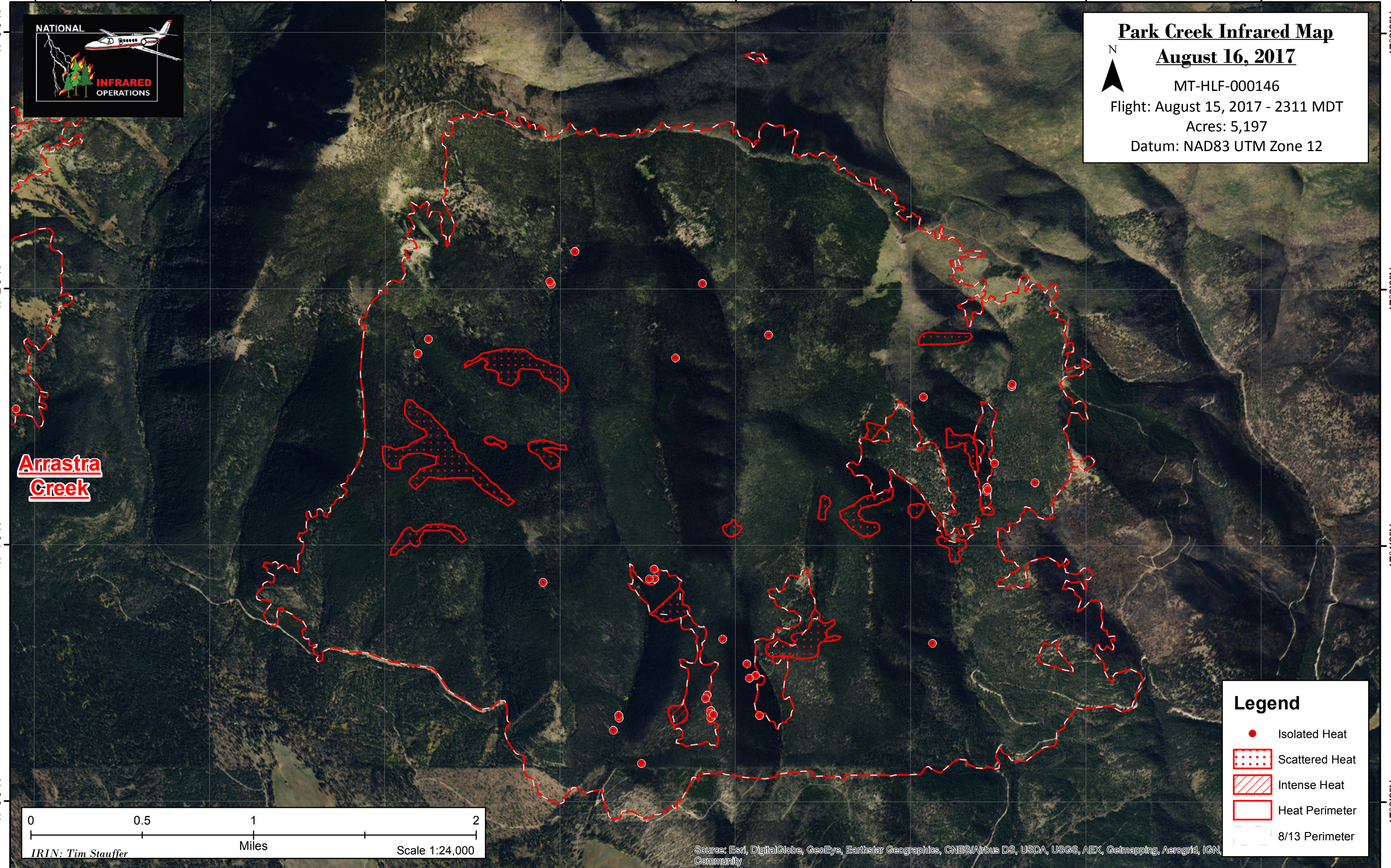
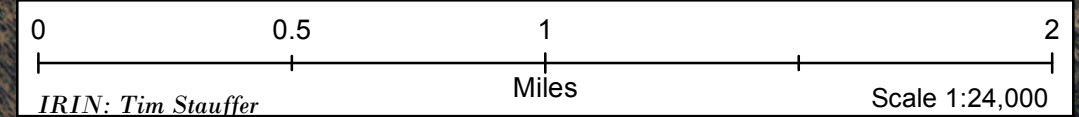


112°44'0"W 112°43'0"W 112°42'0"W 112°41'0"W 112°40'0"W 112°39'0"W 112°38'0"W 112°37'0"W



Park Creek Infrared Map
August 16, 2017
MT-HLF-000146
Flight: August 15, 2017 - 2311 MDT
Acres: 5,197
Datum: NAD83 UTM Zone 12

**Arrastra
Creek**



Legend

- Isolated Heat
- Scattered Heat
- Intense Heat
- Heat Perimeter
- 8/13 Perimeter

112°44'0"W 112°43'0"W 112°42'0"W 112°41'0"W 112°40'0"W 112°39'0"W 112°38'0"W 112°37'0"W

Source: Esri, DigitalGlobe, GeoEye, Earthstar Geographics, CNES/Airbus DS, USDA, USGS, AEX, Getmapping, Aerogrid, IGN, Community