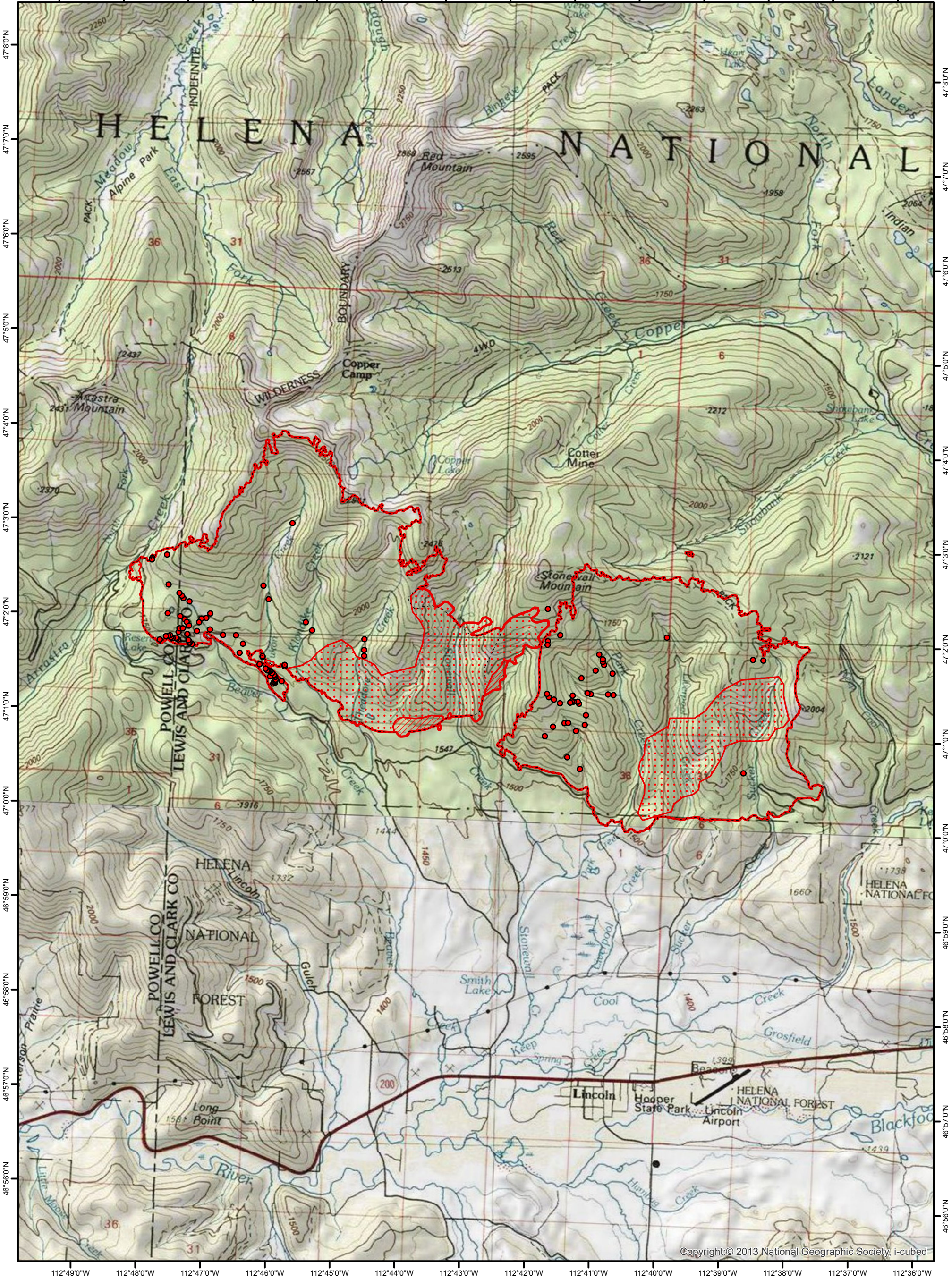


112°50'0"W 112°49'0"W 112°48'0"W 112°47'0"W 112°46'0"W 112°45'0"W 112°44'0"W 112°43'0"W 112°42'0"W 112°41'0"W 112°40'0"W 112°39'0"W 112°38'0"W 112°37'0"W



Copyright © 2013 National Geographic Society, i-cubed

112°49'0"W 112°48'0"W 112°47'0"W 112°46'0"W 112°45'0"W 112°44'0"W 112°43'0"W 112°42'0"W 112°41'0"W 112°40'0"W 112°39'0"W 112°38'0"W 112°37'0"W

Legend

- Heat Perimeter
- Intense Heat
- Scattered Heat
- Isolated Heat Sources
- 20170816_2326_Previous Perimeter



INFRARED MAP
 Park Creek Fire (MT-HLF-000146)
 Flight: August 17, 2017 @ 2329 MDT
 11,128 IR Acres
 IRIN: Dale Gough

